

# RO

Protect Your Operating Staff

Automatic Filling System  
RobaFeed 3 with GlueFill



## Increased safety and efficiency through automatic filling

The automatic filling system **RobaFeed 3** fills the adhesive tank of the melter (Concept series and JumboFlex systems) using the separate granulate container **GlueFill**. Fill level monitoring of the adhesive tank controls the system. If the set minimum filling level is undercut, automatic filling is started and maximum system availability ensured.

### Increased operator safety

The granulate is filled into the separate **GlueFill** container. This minimizes the risk of burns for the operators as they have no contact anymore with the hot melter. As additional safety measure, an optional lock prevents tank opening by untrained personnel. An air filter on the tank lid cleans any occurring adhesive vapors and can be easily replaced.

### Granulate feed and storage

The **GlueFill** is available in three sizes (S, M, and L). Using models M and L, up to two melters can be filled simultaneously. The current granulate filling level can be easily checked through an inspection window. A suction unit with vibrator is inserted in the loose granulate of the respective container. The vibrator loosens the granulate and the suction nozzle generates an underpressure so that the granulate is drawn in and feed. As large amounts of granulate tend to clump, a filling grid is available as an option for the **GlueFill L**. A vibrator plate is also available as an option. For longer distances to the

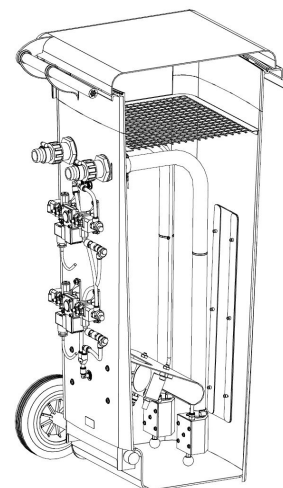
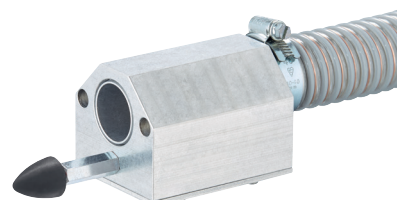
melter, a special distance booster for increased suction effect is available as an option for the transport hose.

### Efficient and maintenance-friendly

Demand-dependent, automatic filling and less refilling increases efficiency. Thanks to the closed system, no contaminations or foreign objects can enter the tank reservoir. The result is less maintenance and a consistent adhesive quality.

### Your advantages

- Safe filling without risk of burns
- Cost savings and increased line efficiency through maximum system availability
- Time savings due to less refilling and reduced maintenance
- Consistent adhesive strength due to constant adhesive temperature
- No contamination of the melter due to clean and precise filling



## Technical data

Adhesive type	Granulate and pastilles
Granulate size	Max. Ø 12 mm
Pastilles size	12 x 12 mm
Feed capacity*	4 kg per minute
Container sizes	S: 10 liters / M: 50 liters / L: 100 liters
Suction unit	S: 1 / M: 1 or 2 / L: 1 or 2
Feeding distances	Horizontal max. 7.5 m, vertical max. 2.5 m
Compressed air connection	6 bar, dry, filtered, unoled, G1/4" connection
Compressed air consumption at 6 bar	max. 250 standard liters/min.
Electrical connection	Robatech systems: 24 Volt DC from the system

\* Function and feeding capacity depend on quality, size, shape, and stickiness of the adhesive

Robatech AG, Headquarters  
Pilatusring 10  
CH-5630 Muri  
Switzerland  
Tel. +41 56 675 77 00  
info@robatech.ch  
www.robatech.com