



GEBHARDT Push-Tray Sorter

Ensuring precision in the sorting process



The GEBHARDT Push-Tray Sorter is an innovative automated sorting system specifically designed for logistics and dispatch centres. With remarkable precision and speed, it ensures the smooth sorting and distribution of a wide range of products. Its flexibility allows the Push-Tray Sorter to handle items of various shapes and sizes, making it an ideal solution for companies with diverse product portfolios.

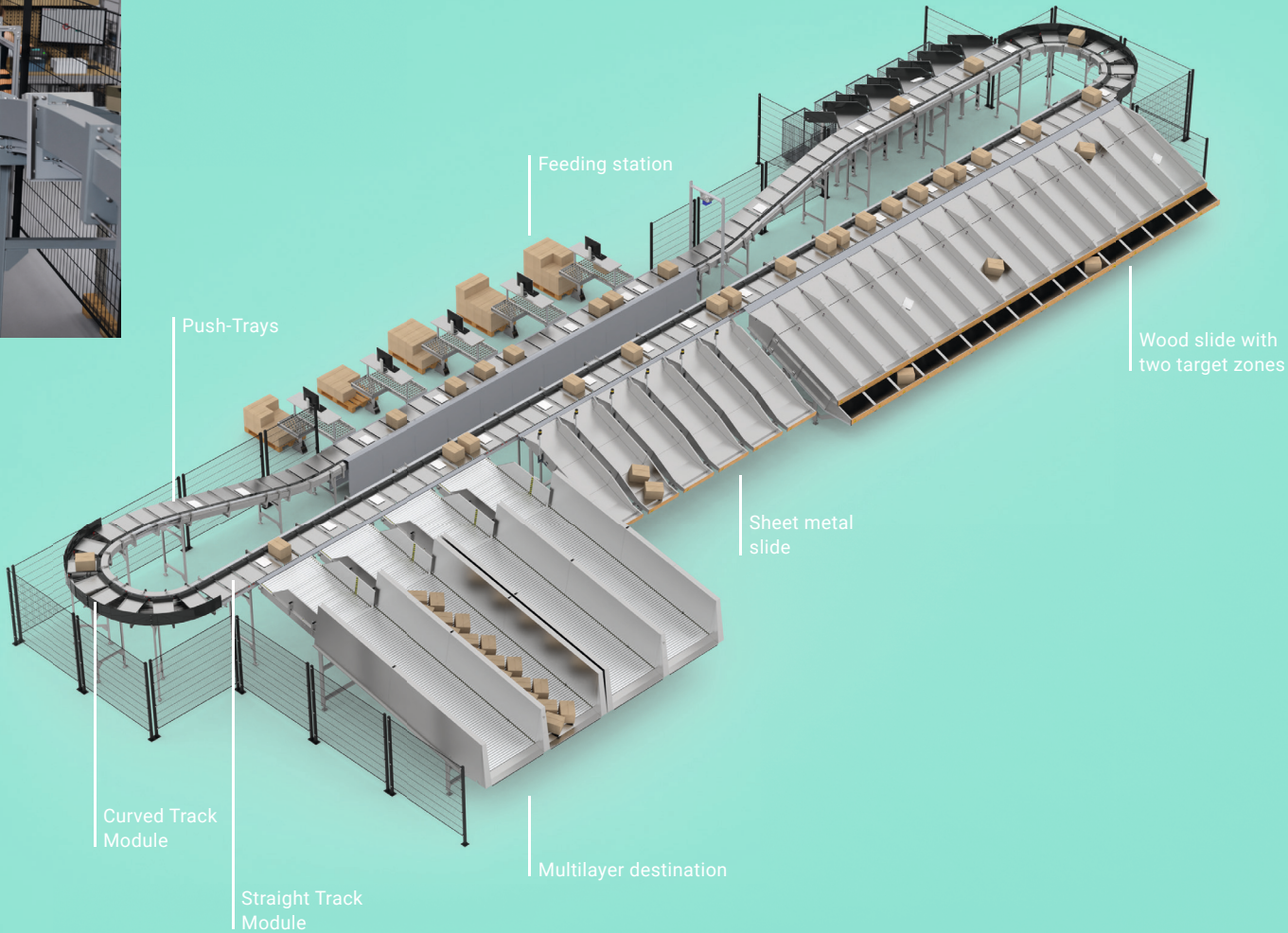
OVERCOMING CHALLENGES, OPTIMISING PROCESSES

Today's businesses face the challenge of increasing order volumes and complex returns processes. The GEBHARDT Push-Tray Sorter helps companies tackle these challenges effectively. Combining efficiency, flexibility, and precision, this high-performance system can process conveyed goods weighing as little as 0.1 kg and up to 15 kg. With a sorting speed of up to 1.2 m/s and a throughput rate of up to 14,000 items per hour, the system is ideally suited for high-volume operations.



FLEXIBLE AND RELIABLE FOR ALL CONVEYED GOODS

The GEBHARDT Push-Tray Sorter can efficiently and accurately manage any conveyed goods, whether dealing with compact polybags, cardboard boxes, or unique formats. Its modular design perfectly adapts to a company's specific spatial conditions and logistical requirements. This flexibility ensures seamless integration into existing infrastructures and promotes efficient processes. Moreover, the robust and durable technology of the Push-Tray Sorter guarantees consistent performance, even under heavy loads and during daily operations. The system's focus on energy efficiency also contributes to sustainable, cost-effective logistics solutions.



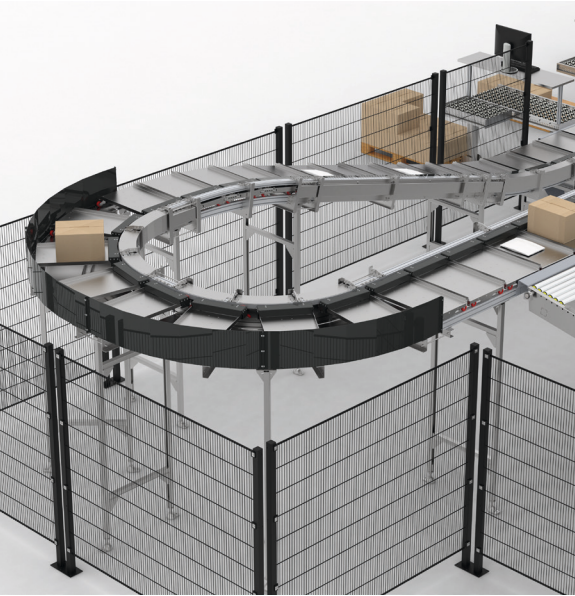
ADDRESSING INCREASING ORDER VOLUMES AND SHORTER DELIVERY TIMES

The GEBHARDT Push-Tray Sorter is versatile and particularly beneficial for companies with high turnover rates. In e-commerce, it enables fast and efficient processing of growing order volumes and the associated returns. In wholesale and retail, the sorter enhances the sorting and distribution of various product categories, which helps reduce delivery times. In warehousing, it significantly improves sorting and distribution processes. Its adaptability to the specific needs of different industries gives the Push-Tray Sorter substantial advantages over conventional sorting systems, ensuring a sustainable boost in efficiency.



EFFICIENT, QUIET, AND EASY TO MAINTAIN

The GEBHARDT Push-Tray Sorter is transforming logistics processes with its blend of high performance and cost-effectiveness. With low energy consumption and a minimum height of 600 mm, it's an ideal choice for companies aiming to streamline their operations. Maintenance is straightforward, and quiet operation enhances comfort in the workplace. The GEBHARDT Push-Tray Sorter is not only versatile but also a powerful system that delivers precise sorting. Its electric drive and code-based reading technology ensure a reliable and accurate sorting process.



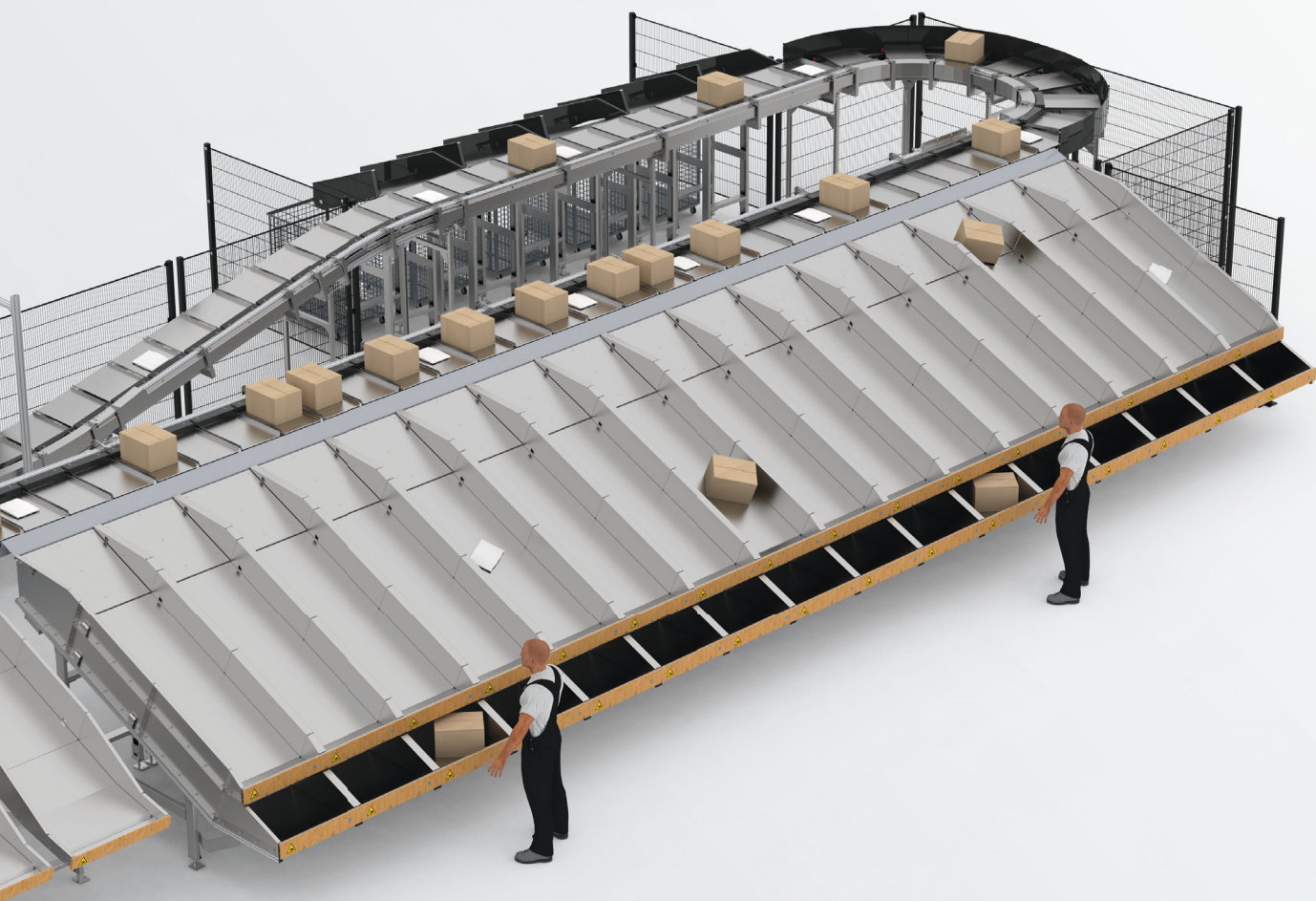
OPTIMISED DESTINATIONS AND TARGET ZONES FOR MAXIMUM SORTING ACCURACY

The GEBHARDT Push-Tray Sorter supports flexible handling by compactly arranging multiple target zones within limited spaces. The wooden chute includes two target zones that enable the efficient distribution of conveyed goods across different levels. This design ensures precise sorting while maximising space utilisation. Additionally, the multilayer destination enhances flexibility by allowing a high volume of parcels to be accommodated within a compact area, thanks to its stackable design. This combination makes the system both space-saving and highly versatile. With the capability to handle inclines and declines of up to 15°, the Push-Tray Sorter can be smoothly integrated into existing infrastructures, even under complex conditions.



ADVANTAGES FOR YOUR SORTING PROCESS

- High sorting speed
- Flexible for different product sizes
- Modular and customisable
- Energy-efficient and sustainable
- Quiet operation (<70 dB(A))
- Easy integration into existing systems
- Minimal maintenance
- Future-proof and scalable



Weight of the
conveyed goods

0,1-15 kg

Transport speed

1,2 m/s

Minimum height

600 mm

Throughput per
hour max.

14.000

Incline and decline

> 15°



FUTURE-PROOF LOGISTICS PROCESSES

The GEBHARDT Push-Tray Sorter is perfect for companies looking to optimise their logistics operations with an automated sorting solution, all while preparing for future growth. Its high flexibility, energy efficiency, and modular design make the Push-Tray Sorter a wise investment, enabling companies to operate more efficiently and maintain long-term competitiveness. With the GEBHARDT Push-Tray Sorter, you will be well-equipped to tackle your logistical challenges.



Learn more:
[bit.ly/gebhardt-
pushtraysorter-en](https://bit.ly/gebhardt-pushtraysorter-en)
Or at gebhardt.com

NEXT GENERATION INTRALOGISTICS

Already in its third generation, the name GEBHARDT is closely associated with innovative intralogistics solutions. The company has always developed, manufactured and installed individual products as well as complete turnkey solutions. The portfolio includes storage systems, conveyor systems, sorting and order picking systems as well as goods lifts, automated guided vehicles and software applications.

The complete range of systems, intelligent software and life cycle services enables the most reliable and efficient automation technology for retail & e-commerce, food & beverages, automotive, healthcare, contract logistics, fashion & consumer goods and industry.



GEBHARDT Intralogistics Group
Neulandstr. 28 | 74889 Sinsheim
T +49 7261 939-0
info@gebhardt-group.com
www.gebhardt.com