



The most effective radiant heaters on the market

Tansun has been developing and manufacturing high-quality infrared radiant heaters in Birmingham, Great Britain, since 1982. The focus is always on maximum efficiency and durability. Our radiant heaters are not only used in traditional applications on patios or in conservatories, but are also increasingly being used in halls, where conventional heating is particularly energy-intensive and inefficient due to large room volumes and open doors.

Our product portfolio ranges from visually appealing radiant heaters with integrated Somfy io-compatible controls to powerful industrial radiant heaters with intelligent dimming systems and stylish heating panels for offices and living spaces.

We have been supplying the DACH region from Leichlingen since 2003 – initially via Keratec Heatware, and since 2023 via TEL GmbH (Tansun Europe, Leichlingen). Many products are available directly from stock – availability can be found in the current price list or on request.

Our advantages at a glance:

- Efficient heat – our short-wave infrared heaters primarily heat surfaces rather than the air – similar to the sun's rays in winter. This allows you to enjoy pleasant warmth even when the ambient temperature remains low – without any UV radiation.
- Instant heat – No warm-up time required! Our radiant heaters are ready for use within a few seconds.
- Environmentally friendly – In combination with renewable energies, CO₂-neutral operation is possible.
- Versatile installation – Ideal for new buildings and existing properties.
- Made in Europe – Short transport routes and fair working conditions are a matter of course for us.

Do you have special requirements or individual wishes? Contact us – we will be happy to advise you and find the right solution for your project!

Visit us online: **www.wirheizenmitstrom.com**

Telephone: **+49-2175-98195**

Email: **info@tel-gmbh.com**

We look forward to your enquiry and are always available to assist you.

Your team at TEL GmbH



Contents

At work	3
As hall heating (production, logistics, stables, sports halls, churches).....	4
Apollo Single 2.0 kW.....	5
Apollo Double 2 x 1.5 kW side by side.....	6
Apollo Double 2 x 1.5 kW one above the other	7
Apollo Triple 3 x 1.5 kW / 3 x 2 kW side by side.....	8
Apollo 3 x 1.5 kW stacked	9
Apollo 6 x 1.5 kW / 6 x 2 kW side by side.....	10
Apollo 6 x 1.5 kW Stacked	11
Apollo 9 x 1.5 kW / 9 x 2 kW.....	12
Apollo Recess Small 1.5 kW	13
Apollo Recess Medium 3.0 kW.....	14
Spotter 2 x 1.5 kW.....	15
Beaver 2 x 1.5 kW.....	16
Efficiency 600 infrared heating panel incl. thermostat	17
Efficiency 900 infrared heating panel incl. thermostat	18
Efficiency 1200 infrared heating panel incl. thermostat	19
Tansun mobile stand "Design" in RAL 7016	20
Ready-to-use bundle: Apollo 2.0 kW with dimmer switch.....	21
Ready-to-go bundle: Apollo 3.0 kW(N) with dimmer switch	22
Ready-to-go bundle: Apollo 6.0 kW(N) with dimmer switch	23
Ready-to-go bundle: Apollo 2 x 3.0 kW(N) with dimmer.....	24
Ready-to-go bundle: Apollo 2 x 2.0 kW(N) with dimmer switch.....	25
Ready-to-go bundle: Apollo 3.0 kW(Ü) with dimmer switch	26
Sorrento Single IP	27
Sorrento Double IP	28
Sorrento Triple IP.....	29
Radio dimmer / push-button dimmer up to 2 kW for infrared radiant heaters.....	30
Radio dimmer / push-button dimmer up to 3.4 kW for infrared heaters.....	31
Radio dimmer / push-button dimmer up to 4 kW / 6.8 kW for infrared heaters	32
Radiant heater remote control 4 channels / 42 channels.....	33
Timer up to 4.0 kW.....	34
XL retaining bracket.....	35
Replacement lamp / replacement tube for Tansun infrared radiant heaters.....	36



In the workplace

Workplaces, especially in workshops, halls and sales rooms, place special demands on heating systems. Conventional heating solutions often reach their limits here, especially when only certain areas need to be heated. TANSUN infrared heaters offer a reliable and flexible solution – targeted radiant heat that works exactly where it is needed.

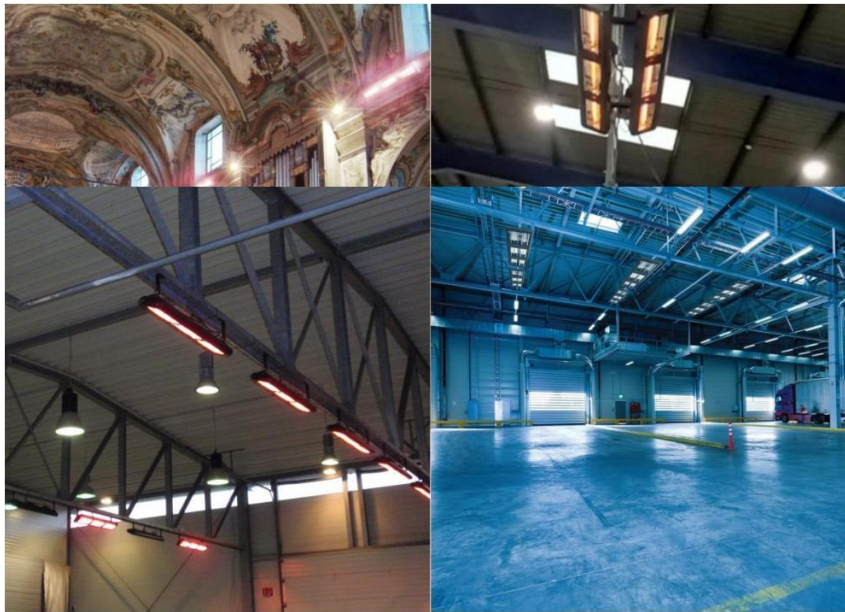


Recommended products: Apollo, Beaver, Spotter

As hall heating (production, logistics, stables, sports halls, churches)

Buildings with high ceilings, poor insulation or frequently opened doors often pose an insurmountable challenge for conventional

heating systems. TANSUN infrared heaters offer a reliable solution here – precise radiant heat exactly where it is needed, regardless of the structural conditions.



Recommended products: Apollo – please contact us for suitable 3-phase dimmers/control systems



Apollo Single 2.0 kW

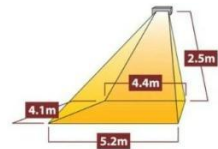
The robust TANSUN Apollo models are suitable for both wall mounting and vertical ceiling mounting. The large reflector ensures optimum heating performance. Critical components of the radiator are optimally cooled by the design. This feature is particularly important indoors, as there is generally less air circulation than outdoors. The units are extremely durable and also perfect for continuous operation (e.g. >8 hours daily).



With this series, you can heat individual work areas from 10 square metres upwards, but also implement full-area (zone) heating solutions in halls.

Areas of application

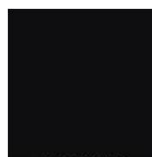
Order picking table, packing table, desk in the hall, workstations at the warehouse door, workshop, sports hall, hall heating, workstation for machine and plant operators, church, etc.



Technical data

Weight: 3.0 kg | Power connection: 230V, socket, fused with type C circuit breaker
| Recommended mounting height: 2.50 m at an angle of approx. 45° or 3.0 – 3.5 m for vertical mounting | Dimensions (LxHxD): 490 mm x 255 mm x 110 mm | Scope of delivery: Wall bracket (tiltable up and down), 3 m connection cable with Schuko plug, protective grille

Power	Colour	Item number
2.0 kW	Deep black	100600



RAL9005
Tiefschwarz



Apollo Double 2 x 1.5 kW side by side

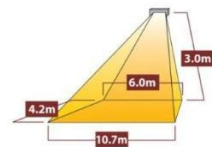
The robust TANSUN Apollo models are suitable for both wall mounting and vertical ceiling mounting. The large reflector ensures optimum heating performance. Critical components of the radiant heater are optimally cooled by the design. This feature is particularly important indoors, as there is generally less air circulation than outdoors. The units are extremely durable and also perfect for continuous operation (e.g. >8 hours daily).



With this series, you can heat individual work areas from 10 square metres upwards, but also implement full-area (zone) heating solutions in halls.

Areas of application

Order picking table, packing table, desk in the hall, workstations at the warehouse door, workshop, sports hall, hall heating, workstation for machine and plant operators, church, etc.

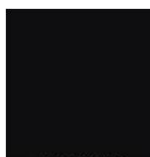


Technical data

Weight: 3.0 kg | Power connection: 230V, hard-wired with type C circuit breaker | Recommended mounting height: 2.50 – 3.5 m at an angle of approx. 45° or 3.0 – 4.0 m for vertical mounting | Dimensions (LxHxD): 930 mm x 255 mm x 110 mm | Scope of delivery: Wall bracket (can be tilted up and down), a connection cable is not included as the required length varies depending on the location.

Power	Colour	Item number
3.0 kW	Deep black	100601/N

Optional accessories: Protective grille, 2 x item number 80006



RAL9005
Tiefschwarz



Apollo Double 2 x 1.5 kW Stacked

The robust TANSUN Apollo models are suitable for both wall mounting and vertical ceiling mounting. The large reflector ensures optimum heating performance. The components of the radiant heater are optimally cooled by the design. This feature is particularly important indoors, as there is generally less air circulation than outdoors. The device is extremely durable and also suitable for continuous operation (e.g. >8 hours per day).

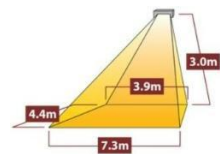


The large
Critical
.
as there is
devices are
per

With this series, you can heat individual work areas from 10 square metres upwards, but also implement full-area (zone) heating solutions in the hall.

Areas of application

Order picking table, packing table, desk in the hall, workstations at the warehouse door, workshop, sports hall, hall heating, workstation for machine and plant operators, church, etc.



Technical data

Weight: 4.0 kg | Power connection: 230V, hard-wired, fused with type C circuit breaker | Recommended mounting height: 2.50 - 3.50 m with an inclination of approx. 45° or 3.0 - 4.0 m with vertical mounting | Dimensions (LxHxD): 422 mm x 390 mm x 110 mm | Scope of delivery: Wall bracket (can be tilted up and down), 2 m connection cable without Schuko plug

Power	Colour	Item number
3.0 kW	Deep black	100601/Ü

Optional accessories: Protective grille, 2 x item number 80006



RAL9005
Tiefschwarz



Apollo Triple 3 x 1.5 kW / 3 x 2 kW side by side

The robust TANSUN Apollo models are suitable for both wall mounting and vertical ceiling mounting. The reflector ensures optimum heating performance. The components of the radiant heater are optimally cooled by the design. This feature is particularly important indoors, as there is generally less air circulation than outdoors. The heater is extremely durable and also suitable for continuous operation (e.g. >8 hours per day).

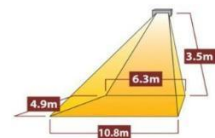


The large Critical . as there is devices are per

With this series, you can heat individual work areas from 10 square metres upwards, but also implement full-area (zone) heating solutions in the hall.

Areas of application

Order picking table, packing table, desk in the hall, workstations at the warehouse door, workshop, sports hall, hall heating, workstation for machine and plant operators, church, etc.



Technical data

Weight: 5.5 kg | Power connection: 3-phase (optionally also 1-phase 230 V, please contact us), fused with type C circuit breaker | Recommended installation height 4.5 kW: 3.0 – 3.5 m at an angle of approx. 45° or 4.0 – 4.5 m for vertical installation | Recommended installation height 6kW: 4.0 – 5.0 m at an angle of approx. 45° or 5.0 – 6.0 m for vertical installation | Dimensions (LxHxD): 1282 mm x 255 mm x 110 mm | Scope of delivery: Wall bracket (can be tilted up and down), a connection cable is not included as the required length varies depending on the location.

Performance	Colour	Item number
4.5 kW	Deep black	103601/N
6.0 kW	Deep black	103602/N

Optional accessories: Protective grille, 3 x item number 80006



RAL9005
Tiefschwarz



Apollo 3 x 1.5 kW Stacked

The robust TANSUN Apollo models are suitable for both wall mounting and vertical ceiling mounting. The reflector ensures optimum heating performance. The components of the radiant heater are optimally cooled by the design. This feature is particularly important indoors, as there is generally less air circulation than outdoors. The heater is extremely durable and also suitable for continuous operation (e.g. >8 hours per day).



The large Critical . as there is devices are per

With this series, you can heat individual work areas from 10 square metres upwards, but also implement full-area (zone) heating solutions in the hall.

Areas of application

Order picking table, packing table, desk in the hall, workstations at the warehouse door, workshop, sports hall, hall heating, workstation for machine and plant operators, church, etc.



Technical data

Weight: 5.0 kg | Power connection: 3-phase (optionally also 1-phase 230 V, please contact us), hard-wired, fused with type C circuit breaker | Recommended installation height: 3.0 - 3.5 m at an angle of approx. 45° or 4.0 - 4.5 m for vertical mounting | Dimensions (LxHxD): 422 mm x 630 mm x 110 mm | Scope of delivery: Wall bracket (can be tilted up and down), a connection cable is not included as the required length varies depending on the location.

Performance	Colour	Item number
4.5 kW	Jet black	103601/Ü

Optional accessories: Protective grille, 3 x item number 80006



RAL9005
Tiefschwarz



Apollo 6 x 1.5 kW / 6 x 2 kW Side by side

The robust TANSUN Apollo models are suitable for both wall mounting and vertical ceiling mounting. The reflector ensures optimum heating performance. The components of the radiant heater are optimally cooled by the design. This feature is particularly important indoors, as there is generally less air circulation than outdoors. The heater is extremely durable and also suitable for continuous operation (e.g. >8 hours per day).



The large
Critical
as there is
devices are
per

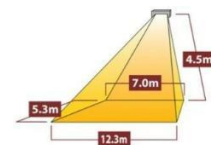
With this series, you can heat individual work areas from 10 square metres upwards, but also implement full-area (zone) heating solutions in the hall.

Areas of application

Workstations at warehouse doors, workshops, sports halls, hall heating, workstations for machine and plant operators, churches, etc.

Technical data

Weight: 12.0 kg | Power connection: 3-phase hard-wired, fused with type C circuit breaker | Recommended installation height 9kW: 6.0 - 6.5 m at an angle of approx. 45° or 8.0 - 10.0 m for vertical installation | Recommended installation height 12kW: 6.0 - 8 m at an angle of approx. 45° or 9.0 - 12.0 m for vertical installation | Dimensions (LxHxD): 1282 mm x 441 mm x 110 mm | Scope of delivery: Wall bracket (can be tilted up and down), a connection cable is not included as the required length varies depending on the location.



Power	Colour	Item number
9.0 kW	Deep black	106601/N
12.0 kW	Deep black	106602/N

Optional accessories: Protective grille, 6 x item number 80006



RAL9005
Tiefschwarz



Apollo 6 x 1.5 kW Stacked

The robust TANSUN Apollo models are suitable for both wall mounting and vertical ceiling mounting. The reflector ensures optimum heating performance. The components of the radiant heater are optimally cooled by the design. This feature is particularly important indoors, as there is generally less air circulation than outdoors. The heater is extremely durable and also suitable for continuous operation (e.g. >8 hours per day).



The large
Critical
.
as there is
devices are
per

With this series, you can heat individual work areas from 10 square metres upwards, but also implement full-area (zone) heating solutions in the hall.

Areas of application

Workstations at warehouse doors, workshops, sports halls, hall heating, workstations for machine and plant operators, churches, etc.

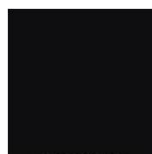
Technical data

Weight: 12.0 kg | Power connection: 3-phase hard-wired, fused with type C circuit breaker | Recommended mounting height: 6.0 - 6.5 m at an angle of approx. 45° or 8.0 - 10.0 m for vertical mounting | Dimensions (LxHxD): 857 mm x 630 mm x 110 mm | Scope of delivery: Wall bracket (tiltable upwards and downward tilt), a connection cable is not included as the required length varies depending on the location.



Power	Colour	Item number
9.0 kW	Deep black	106601/Ü

Optional accessories: Protective grille, 6 x item number 80006



RAL9005
Tiefschwarz



Apollo 9 x 1.5 kW / 9 x 2 kW

The robust TANSUN Apollo models are suitable for both wall mounting and vertical ceiling mounting. The reflector ensures optimum heating performance. The components of the radiant heater are optimally cooled by the design. This feature is particularly important indoors, as there is generally less air circulation than outdoors. The heater is extremely durable and also suitable for continuous operation (e.g. >8 hours per day).



The large Critical . as there is devices are per

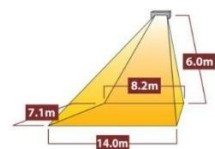
With this series, you can heat individual work areas from 10 square metres upwards, but also implement full-area (zone) heating solutions in the hall.

Areas of application

Workstations at warehouse doors, workshops, sports halls, hall heating, workstations for machine and plant operators, churches, etc.

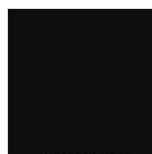
Technical data

Weight: 20.0 kg | Power connection: 3-phase hard-wired, fused with type C circuit breaker | Recommended mounting height: 6.0 – 9.0 m at an angle of approx. 45° or 10.0 – 15.0 m for vertical mounting | Dimensions (LxHxD): 1285 mm x 630 mm x 110 mm | Scope of delivery: Wall bracket (can be tilted up and down), a connection cable is not included as the required length varies depending on the location.



Power	Colour	Item number
13.5 kW	Jet black	109601/N
18.0 kW	Deep black	109602/N

Optional accessories: Protective grille, 9 x item number 80006



RAL9005
Tiefschwarz



Apollo Recess Small 1.5 kW

The impressive heat output of the "Apollo" series is combined here with a recessed frame for discreet yet elegant installation in the ceiling "APOLLO Recess", unobtrusive but effective. For entrance areas of shops or shopping centres, training rooms, draughty reception halls or waiting areas.



combined
. This is the

With this series, you can comfortably heat lounge areas and areas comfortably.

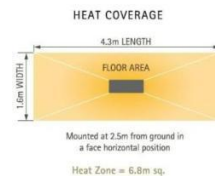
waiting

Areas of application

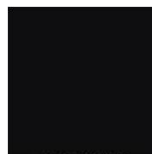
Perfect heating for work areas, workplaces, lounge areas and waiting areas.

Technical data

Weight: 3.0 kg | Protection class: IP 55 | Power connection: 230 V, fused with type C circuit breaker | Recommended installation height: > 2.0 m | Dimensions incl. protective frame (WxHxD): 596 mm x 348 mm x 320 mm | Scope of delivery: Bracket (allows vertical or horizontal mounting), connection cable not included, connection to be made on site.



Power	Colour	Item number
1.5 kW	Deep black	200601



RAL9005
Tiefschwarz



Apollo Recess Medium 3.0 kW

The impressive heat output of the Apollo series is combined here with a recessed frame that is both discreet and elegant in the ceiling "APOLLO Recess", unobtrusive but effective. For entrance areas of shops or shopping centres, training rooms, draughty reception halls or waiting areas.

With this series, you can comfortably heat lounge areas and areas comfortably.

Areas of application

Perfect heating for work areas, workplaces, lounge areas, waiting areas and halls.

Technical data

Weight: 6.0 kg | Protection class: IP 55 | Power connection: 230 V, with type C circuit breaker | Recommended installation height:

Dimensions including protective frame (WxHxD): 1031 mm x 348 mm x 320 mm | delivery:

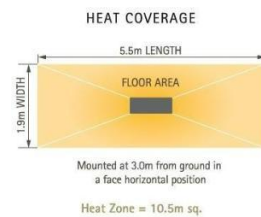
Bracket (allows vertical or horizontal mounting),

connection cable not included, connection to be made on site.



combined
. This is the

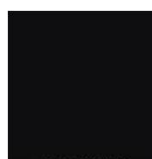
waiting



fused
2.5 – 3.0 m |
Scope of

co

Power	Colour	Item number
3.0 kW	Deep black	200602



RAL9005
Tiefschwarz



Spotter 2 x 1.5 kW

Mobile, robust and safe. Variable thanks to four solid castors, yet stable thanks to two parking brakes. This infrared radiant heater suitable for dehumidification and paint drying. The device can be switched to between two heat output settings.

With this series, you can heat your work area very flexibly comfortably.



secure and
is also
switch
and

Areas of application

Ideal for use in workshops, garages, halls and on construction sites. This infrared radiant heater is also suitable for dehumidification and paint drying.

Technical data

Weight: 20.0 kg | Power connection: 230 V, fused with type C circuit breaker | Dimensions including stand (LxHxD): 1140 mm x 650 mm x 650 mm | Scope of delivery: Stand with four freely rotating castors, two of which are lockable, radiant heater with two individual switches, each 1500 watts, 3 m connection cable with Schuko plug

Power	Colour	Item number
3.0 kW	Red	100534



RAL3020
Verkehrsrot



Beaver 2 x 1.5 kW

A compact, portable radiant heater that is the perfect solution for heat requirements. With a sturdy carrying frame and tilt protection complete flexibility – a robust yet lightweight aluminium construction. If you need a effective infrared heater for frequently changing workplaces in the , the TANSUN BEAVER model is the ideal choice. The heater can be switched to two settings, each with 1500 W.



specific
for

mobile and
workshop
radiant

This series allows you to heat your work area very flexibly and comfortably.

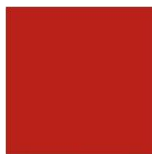
Areas of application

Ideal for use in workshops, garages, halls and on construction sites. This infrared radiant heater is also suitable for dehumidification and paint drying.

Technical data

Weight: 7.0 kg | Power connection: 230 V, fused with type C circuit breaker | Dimensions incl. stand (LxHxD): 650 mm x 430 mm x 200 mm | Scope of delivery: Stand with carrying handle, radiant heater with two individual switches, each 1500 watts, 3 m connection cable with Schuko plug

Power	Colour	Item number
3.0 kW	Red	100535



RAL3020
Verkehrsrot



Efficiency 600 infrared heating panel incl. thermostat

Discover the advantages of Tansun Heat Panels and experience innovative, cost-effective heating with our Efficiency infrared heating panel. With its unique design, it offers numerous advantages for an efficient and space-saving heating solution.



Energy-efficient and cost-saving: The Tansun Efficiency infrared heating panel is characterised by its extremely low energy consumption. This not only makes it extremely economical to operate, but also enables significant savings compared to gas central heating systems. Say goodbye to expensive maintenance and certification costs for boiler maintenance.

Lightweight, ultra-thin and discreet: the panel is not only lightweight, but also ultra-thin and blends seamlessly into any environment. With its slim design, it is ideal for use in private households and commercial premises. The option of ceiling mounting also allows for space-saving, zonal heating.

Individually thermostatically controlled: Each heating panel can be individually thermostatically controlled, enabling additional energy savings. Adjust the temperature to suit your needs and enjoy precise control over your indoor climate.

Areas of application

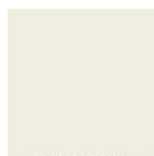
Ideal for use as heating in private homes and offices.

Technical data

Weight: 3.1 kg | Protection class: IP certified | Power connection: 230V | Heating area 5.0 – 7.0 sqm | Dimensions (LxHxD): 595 mm x 595 mm x 38 mm | Scope of delivery: 1.9 m connection cable without Schuko plug



Power	Colour	Item number
0.325 kW	Pure white	RHPT06X06WHT



RAL9010
Reinweiß



Efficiency 900 infrared heating panel incl. thermostat

Discover the advantages of Tansun Heat Panels and experience innovative, cost-effective heating with our Efficiency Infrared Heating Panel. With its unique design, it offers numerous advantages for an efficient and space-saving heating solution.



Energy-efficient and cost-saving: The Tansun Efficiency infrared heating panel is characterised by its extremely low energy consumption. This not only makes it extremely economical to operate, but also enables significant savings compared to gas central heating systems. Say goodbye to expensive maintenance and certification costs for boiler maintenance.

Lightweight, ultra-thin and discreet: the panel is not only lightweight, but also ultra-thin and blends seamlessly into any environment. With its slim design, it is ideal for use in private households and commercial premises. The option of ceiling mounting also allows for space-saving, zonal heating.

Individually thermostatically controlled: Each heating panel can be individually thermostatically controlled, enabling additional energy savings. Adjust the temperature to suit your needs and enjoy precise control over your indoor climate.

Areas of application

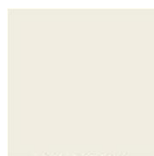
Ideal for use as heating in private homes and offices.

Technical data

Weight: 4.9 kg | Protection class: IP certified | Power connection: 230V | Heating area 7.0 – 9.0 sqm | Dimensions (LxHxD): 895 mm x 595 mm x 38 mm | Scope of delivery: 1.9 m connection cable without Schuko plug



Power	Colour	Item number
0.520 kW	Pure white	RHPT06X09WHT



RAL9010
Reinweiß



Efficiency 1200 infrared heating panel incl. thermostat

Discover the advantages of Tansun Heat Panels and experience innovative, cost-effective heating with our efficient infrared heating panel. With its unique design, it offers numerous advantages for an efficient and space-saving heating solution.

Energy-efficient and cost-saving: The Tansun Efficiency infrared heating panel is characterised by its extremely low energy consumption. This not only makes it extremely economical to operate, but also enables significant savings compared to gas central heating systems. Say goodbye to expensive maintenance and certification costs for boiler maintenance.

Lightweight, ultra-thin and discreet: the panel is not only lightweight, but also ultra-thin and blends seamlessly into any environment. With its slim design, it is ideal for use in private households and commercial premises. The option of ceiling mounting also allows for space-saving, zonal heating.

Individually thermostatically controllable: Each heating panel can be individually thermostatically controlled, enabling additional energy savings. Adjust the temperature to suit your needs and enjoy precise control over your indoor climate.

Areas of application

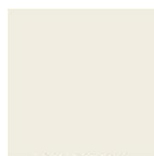
Ideal for use as heating in private homes and offices.

Technical data

Weight: 5.3 kg | Protection class: IP certified | Power connection: 230V | Heating area 10.0 – 16.0 sqm | Dimensions (LxHxD): 1195 mm x 595 mm x 38 mm | Scope of delivery: 1.9 m connection cable without Schuko plug



Power	Colour	Item number
0.700 kW	Pure white	RHPT06X12WHT



RAL9010
Reinweiß



Tansun mobile stand "Design" in RAL 7016

The stylish mobile stand allows you to set up the infrared heater at many different points on your patio, in your tent, etc. Please note that this item does not include a heater. Suitable models are listed below.

Base area: 450 x 500 mm Height: 2135 mm

Colour: RAL 7016

Suitable models

Miami, Rio, Rio Grande (single) Sorrento (single + double), Monaco (single + double), Primus (single)

Technical

Weight: 22.0 kg | Height: 2.135 m | Base dimensions (LxW): 450 mm x 500 mm



Height	Colour	Item number
2.135 m	Anthracite grey	1200-DE





Ready-to-use bundle: Apollo 2.0 kW with dimmer

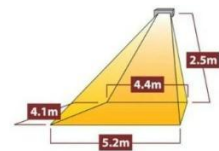
This attractive bundle includes the TANSUN "Apollo" infrared heater in a powerful 2 kW version, as well as a practical dimmer and push button. With this dimmer, you can conveniently adjust the heating output to four different levels at the touch of a button. This allows you to set the output of the TANSUN "Apollo" infrared heater to 100%, 66%, 50% or 33% according to your requirements. When you reduce the output of the heater using the dimmer, you also reduce your electricity consumption.



With this device combination, you can easily heat an area of approximately 10 - 12 square metres, depending on the installation height and ambient temperature. You also have the option of using an optional radio remote control to control the dimmer.

Areas of application

Order picking table, packing table, desk in the hall, workstations at the warehouse door, workshop, sports hall, hall heating, workstation for machine and plant operators, church, etc.



Technical data

Weight: 3.0 kg | Power connection: 230V, hard-wired, fused with type C circuit breaker | Recommended mounting height: 2.5 m at an angle of approx. 45° and 3.0-3.5 m for vertical mounting | Dimensions (LxHxD): 490 mm x 225 mm x 110 mm | Scope of delivery: Wall bracket (tiltable up and down), 3 m connection cable, 2 kW wireless dimmer, push-button control

Power	Colour	Item number
2.0 kW	Deep black	100600_B





Ready-to-go bundle: Apollo 3.0 kW(N) with dimmer

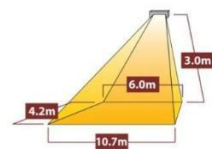
This attractive bundle includes the TANSUN "Apollo" infrared heater in a powerful 3 kW version, as well as a practical dimmer and switch. With this dimmer, you can conveniently adjust the heating output to four different levels at the touch of a button. This allows you to set the output of the TANSUN "Apollo" infrared radiant heater to 100%, 66%, 50% or 33% according to your requirements. When you reduce the output of the radiant heater using the dimmer switch, you also reduce your power consumption.



With this device combination, you can easily heat an area of approximately 15–20 square metres, depending on the installation height and ambient temperature. You also have the option of using an optional radio remote control to control the dimmer.

Areas of application

Order picking table, packing table, desk in the hall, workstations at the warehouse door, workshop, sports hall, hall heating, workstation for machine and plant operators, church, etc.



Technical data

Weight: 5.0 kg | Power connection: 230V, hard-wired, fused with type C circuit breaker | Recommended mounting height: 2.5-3.5 m at an angle of approx. 45° and 3.0-4.0 m for vertical mounting | Dimensions (LxHxD): 930 mm x 225 mm x 110 mm | Scope of delivery: Wall bracket (can be tilted up and down), connection cables are not included as the required length varies depending on the location, wireless dimmer 3 kW, push button for control at the touch of a button

Power	Colour	Item number
3.0 kW	Deep black	100600N_B



RAL9005
Tiefschwarz



Ready-to-go bundle: Apollo 6.0 kW(N) with dimmer

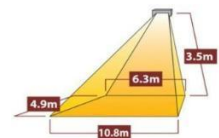
This attractive bundle includes the TANSUN "Apollo" infrared heater in a powerful 6 kW version, as well as a practical dimmer and button. With this dimmer, you can conveniently adjust the heating output to four different levels at the touch of a button. This allows you to set the output of the TANSUN "Apollo" infrared radiant heater to 100%, 66%, 50% or 33% according to your requirements. When you reduce the output of the radiant heater using the dimmer switch, you also reduce your power consumption.



With this device combination, you can easily heat an area of approximately 30 - 40 square metres, depending on the installation height and ambient temperature. You also have the option of using an optional radio remote control to control the dimmer.

Areas of application

Order picking table, packing table, desk in the hall, workstations at the warehouse door, workshop, sports hall, hall heating, workstation for machine and plant operators, church, etc.



Technical data

Weight: 5.0 kg | Power connection: 230V, hard-wired, fused with type C circuit breaker | Recommended mounting height: 2.5-3.5 m at an angle of approx. 45° and 3.0-4.0 m for vertical mounting | Dimensions (LxHxD): 1282 mm x 225 mm x 110 mm | Scope of delivery: Wall bracket (tiltable up and down), connection cables are not included as the required quantity varies on site, radio push-button dimmer 6 kW via one phase, push-button for control at the touch of a button

Power	Colour	Item number
3.0 kW	Deep black	100600N_B



RAL9005
Tiefschwarz



Ready-to-start bundle: Apollo 2 x 3.0 kW(N) with dimmer

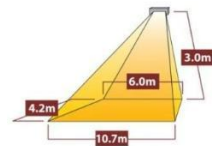
This attractive bundle includes two TANSUN infrared radiant heaters "Apollo" infrared heaters in a powerful 3 kW version, as well as a practical dimmer and button. With this dimmer, you can conveniently adjust the heating output to four different levels at the touch of a button. This allows you to set the output of the TANSUN "Apollo" infrared radiant heater to 100%, 66%, 50% or 33% according to your requirements. When you reduce the output of the radiant heater using the dimmer, you also reduce your power consumption.



With this device combination, you can easily heat an area of approximately 30–40 square metres, depending on the installation height and ambient temperature. You also have the option of using an optional radio remote control to control the dimmer.

Areas of application

Order picking table, packing table, desk in the hall, workstations at the warehouse door, workshop, sports hall, hall heating, workstation for machine and plant operators, church, etc.



Technical data

Weight: 2 x 4.0 kg | Power connection: 230V, hard-wired, fused with type C circuit breaker | Recommended mounting height: 2.5-3.5 m at an angle of approx. 45° and 3.0-4.0 m for vertical mounting | Dimensions (LxHxD): 2 pieces, each 857 mm x 225 mm x 110 mm | Scope of delivery: Wall bracket (can be tilted up and down), connection cables are not included as the required quantity varies on site, wireless push-button dimmer 6 kW, push-button for control at the touch of a button

Power	Colour	Item number
6.0 kW	Deep black	100601N_B2



RAL9005
Tiefschwarz



Ready-to-start bundle: Apollo 2 x 2.0 kW(N) with dimmer

This attractive bundle includes two TANSUN infrared heaters "Apollo" infrared heaters in a powerful 2 kW version, as well as a practical dimmer and button. With this dimmer, you can conveniently adjust the heating output to four different levels at the touch of a button. This allows you to set the output of the TANSUN "Apollo" infrared radiant heater to 100%, 66%, 50% or 33% according to your requirements. When you reduce the output of the radiant heater using the dimmer, you also reduce your power consumption.



With this device combination, you can easily heat an area of approximately 20–24 square metres, depending on the installation height and ambient temperature. You also have the option of using an optional radio remote control to control the dimmer.

Areas of application

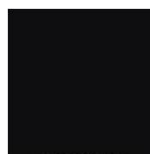
Order picking table, packing table, desk in the hall, workstations at the warehouse door, workshop, sports hall, hall heating, workstation for machine and plant operators, church, etc.



Technical data

Weight: 2 x 3.0 kg | Power connection: 230V, hard-wired, fused with type C circuit breaker | Recommended mounting height: 2.5 m at an angle of approx. 45° and 3.0-3.5 m for vertical mounting | Dimensions (LxHxD): 2 pieces, each 490 mm x 225 mm x 110 mm | Scope of delivery: Wall bracket (can be tilted up and down), connection cables are not included as the required quantity varies on site, radio button dimmer, continuously dimmable, 4 kW over 1 phase, button for control at the touch of a button

Power	Colour	Item number
4.0 kW	Deep black	100600B4



RAL9005
Tiefschwarz



Ready-to-use bundle: Apollo 3.0 kW(Ü) with dimmer

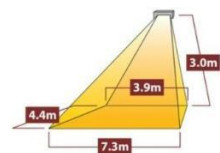
This attractive bundle includes the TANSUN "Apollo" infrared heater in a powerful 3 kW version, as well as a practical dimmer and push button. With this dimmer, you can conveniently adjust the heating output to four different levels at the touch of a button. This allows you to set the output of the TANSUN "Apollo" infrared heater to 100%, 66%, 50% or 33% according to your requirements. When you reduce the output of the heater using the dimmer, you also reduce your power consumption.



With this device combination, you can easily heat an area of approximately 15 - 20 square metres, depending on the installation height and ambient temperature. You also have the option of using an optional radio remote control to control the dimmer.

Areas of application

Order picking table, packing table, desk in the hall, workstations at the warehouse door, workshop, sports hall, hall heating, workstation for machine and plant operators, church, etc.



Technical data

Weight: 3.0 kg | Power connection: 230V, hard-wired, fused with type C circuit breaker | Recommended mounting height: 2.5 m at an angle of approx. 45° and 3.0-3.5 m for vertical mounting | Dimensions (LxHxD): 422 mm x 390 mm x 110 mm | Scope of delivery: Wall bracket (tiltable up and down), 3 m connection cable, 2 kW wireless dimmer, push-button control

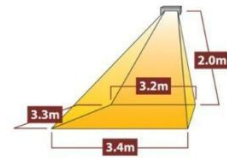
Power	Colour	Item number
3.0 kW	Deep black	100600B3





Sorrento Single IP

The robust Tansun Sorrento IP model is suitable for both wall mounting and vertical ceiling mounting. The large reflector ensures optimum heating performance. Critical components of the radiant heater are optimally cooled by the design. The devices are extremely durable and also perfected for continuous operation (e.g. >8 hours daily).



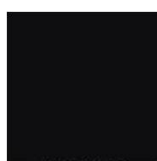
Areas of application

Ideal for use as heating in shop windows, on balconies, terraces, workplaces, driving ranges, in stables and under awnings.

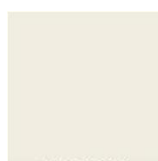
Technical data

Weight: 3.4 kg | Protection class: IP55 | Power connection: 230 V, socket, fused with type C circuit breaker | Recommended mounting height: 2.0–2.5 m at an angle of approx. 45° and 3.0 m for vertical mounting | Dimensions (LxHxD): 402 mm x 227 mm x 323 mm | Scope of delivery: Wall bracket (can be tilted up and down), 3 m connection cable with Schuko plug

Power	Colour	Item number
1.5 kW	Deep black	100611IP
1.5 kW	Pure white	100612IP
1.5 kW	White aluminium	100613IP
1.5 kW	Anthracite grey	100614IP
2.0 kW	Deep black	102611IP
2.0 kW	Pure white	102612IP
2.0 kW	White aluminium	102613IP
2.0 kW	Anthracite grey	102614IP



RAL9005
Tiefschwarz



RAL9010
Reinweiß



RAL9006
Weißaluminium



RAL7016
Anthrazitgrau



Sorrento Double IP

The robust Tansun Sorrento Double IP model is suitable for both wall mounting and vertical ceiling mounting. The large reflector ensures optimum heating performance. Critical components of the radiant heater are optimally cooled by the design. The devices are extremely durable and also perfected for continuous operation (e.g. >8 hours daily).



Areas of application

Ideal for use as heating in shop windows, on balconies, terraces, workplaces, driving ranges, in stables and under awnings.



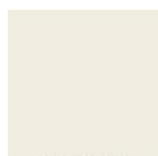
Technical data

Weight: 5.6 kg | Protection class: IP55 | Power connection: 2x230V, socket, fused with type C circuit breaker | Recommended mounting height: 2.5 – 3.0 m at an angle of approx. 45° and 3.0 m for vertical mounting | Dimensions (LxHxD): 790 mm x 227 mm x 323 mm | Scope of delivery: Wall bracket (tiltable up and down), 2 x 3 m connection cable with Schuko plug

Power	Colour	Item number
3.0 kW	Deep black	103611IP
3.0 kW	Pure white	103612IP
3.0 kW	White aluminium	103613IP
3.0 kW	Anthracite grey	103614IP



RAL9005
Tiefschwarz



RAL9010
Reinweiß



RAL9006
Weißaluminium



RAL7016
Anthrazitgrau



Sorrento Triple IP

The robust Tansun Sorrento Triple IP model is suitable for both wall mounting and vertical ceiling mounting. The large reflector ensures optimum heating performance. Critical components of the radiant heater are optimally cooled by the design. The units are extremely durable and also perfected for continuous operation (e.g. >8 hours daily).



Areas of application

Ideal for use as heating on terraces, in workplaces, on driving ranges, in stables and under awnings.



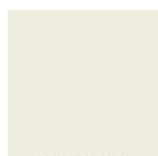
Technical data

Weight: 8.0 kg | Protection class: IP55 | Power connection: 3 x 230 V, socket, protected with type C circuit breaker | Recommended mounting height: 3.5 – 4.0 m at an angle of approx. 45° and 4.0-4.5 m for vertical mounting | Dimensions (LxHxD): 1178 mm x 227 mm x 323 mm | Scope of delivery: Wall bracket (can be tilted up and down), 3 x 3 m connection cable with Schuko plug

Power	Colour	Item number
4.5 kW	Deep black	105611IP
4.5 kW	Pure white	105612IP
4.5 kW	White aluminium	105613IP
4.5 kW	Anthracite grey	105614IP



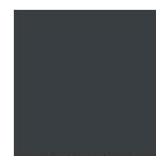
RAL9005
Tief schwarz



RAL9010
Reinweiß



RAL9006
Weißaluminium



RAL7016
Anthrazitgrau



Radio dimmer / push-button dimmer up to 2 kW for infrared radiant heaters

Dimmers for Tansun radiant heaters allow you to regulate the heat and help you save energy when it is not needed. This dimmer was specially developed for use with infrared radiant heaters. Thanks to its rated power of 2 kW, it can be used to control many different heating and lighting elements.



You can use this radio dimmer to control the power of your radiant heaters in up to 4 stages via remote control: 33% / 50% / 66% / 100% and ON/OFF. A

corresponding handheld transmitter can be ordered with item number 900342/900344. However, the dimmer can also be wired and operated with a standard push button.

It is also possible to operate other brands with this control. Please ensure that the tube is dimmable and that the radiant heater does not have an integrated control or soft starter.

The dimmer is suitable for continuous commercial use.

Areas of application

Private terrace, order picking table, packing table, desk in the hall, workstations at the warehouse door, workshop, sports hall, hall heating, workstation for machine and plant operators, church, etc.

Operation

By radio remote control, which is available separately, or with a wired push button.

Operating temperature:

From approx. -20°C to +40°C

Technical data

Weight: 0.4 kg | Protection class: IP 65 | Maximum control load: 2.0 kW | Power connection: 230 V, hard-wired, fused with type C circuit breaker | Radio with 888 MHz | Dimensions (WxHxD): 145 mm x 115 mm x 55 mm | Scope of delivery: Dimmer, dowels and screws

Power	Colour	Item number
2.0 kW	Light grey	900034



Radio dimmer / push-button dimmer up to 3.4 kW for infrared radiant heaters

Dimmers for Tansun radiant heaters allow you to regulate the heat and help you save energy when it is not needed. This dimmer was specially developed for use with infrared radiant heaters. Thanks to its rated power of 3.4 kW, it can be used to control many different heating and lighting elements.



You can use this radio dimmer to remotely control the output of your radiant heaters radiators. You can order a corresponding handheld transmitter with item number 900342/900344. However, the dimmer can also be wired and operated with a standard push button. An integrated timer can be activated using a DIP switch so that the radiant heater switches off automatically after 15 or 30 minutes.

It is also possible to operate other brands with this control. Please ensure that the tube is dimmable and that the radiant heater does not have an integrated control or soft starter.

The dimmer is suitable for continuous commercial use.

Areas of application

Private terrace, order picking table, packing table, desk in the hall, workstations at the warehouse door, workshop, sports hall, hall heating, workstation for machine and plant operators, church, etc.

Operation

By radio remote control, which is available separately, or with a wired push button.

Operating temperature:

From approx. -20°C to +40°C

Technical data

Weight: 0.4 kg | Protection class: IP 54 | Maximum control load: 3.4 kW | Power connection: 230 V, for fixed wiring, protected with type C circuit breaker | Dimensions (LxHxD): 195 mm x 200 mm x 75 mm | Scope of delivery: Dimmer, dowels and screws

Power	Colour	Item number
3.4 kW	Light grey	900035



Radio dimmer / push-button dimmer up to 4 kW / 6.8 kW for infrared radiant heaters

Dimmers for Tansun radiant heaters allow you to regulate the heat and help you save energy when it is not needed. This dimmer was specially developed for use with infrared radiant heaters. Thanks to its rated power of 6.8 kW, it can be used to control many different heating and lighting elements, for example 2 x 3 kW.



You can use this radio dimmer to remotely control the output of your radiant heaters radiators. You can order a corresponding handheld transmitter with the item number 900342/900344. The dimmer can also be wired and operated with a standard push button.

It is also possible to operate other brands with this control. Please ensure that the tube is dimmable and that the radiant heater does not have an integrated control or soft starter.

The dimmer is suitable for continuous commercial use.

Areas of application

Private terrace, order picking table, packing table, desk in the hall, workstations at the warehouse door, workshop, sports hall, hall heating, workstation for machine and plant operators, church, etc.

Operation

By radio remote control, which is available separately, or with a wired push button.

Operating temperature:

From approx. -20°C to +40°C

Technical data

Weight: 0.4 kg | Protection class: IP 54 | Maximum control load: 4.0 kW / 6.8 kW | Power connection: 230 V, for fixed wiring, fused with type C circuit breaker | Dimensions (WxHxD) 4kW: 195 mm x 200 mm x 75 mm | Dimensions (WxHxD) 6kW: 230 mm x 200 mm x 75 mm | Scope of delivery: Dimmer, dowels and screws

Power	Colour	Item number
4.0 kW	Light grey	900036
6.8 kW	Light grey	900003



Radiant heater remote control 4 channels / 42 channels

The remote control for TANSUN radio dimmers allows you to operate one or more dimmers within range. All dimmers are controlled synchronously.

The range is approx. 20 m.

4-channel: Step switching 50% / 75% / 100% and ON/OFF function.

42-channel: Stepless dimming in 6 different groups.

Operating voltage:

3.6 V DC

Channels:

4 / 42

Areas of application

For controlling the wireless dimmers we offer.

Technical

Weight: 0.01 kg | Protection class: IP 20 | CR2032 battery required | Dimensions (WxHxD) 4-

Channel: 60 mm x 30 mm x 10 mm | Dimensions (LxHxD) 42-channel: 125 mm x 40 mm x 10 mm Scope of delivery: Handheld transmitter



Colour	Item number
Grey / Black	900344
Grey / Black	900342



Timer up to 4.0 kW

With the TANSUN™ timer for radiant heaters, you can set the desired running time of the devices yourself (from 3 to 20 minutes). Touching the sensor surface starts the devices connected to the timer. These weatherproof timers have been specially developed for use with infrared radiant heaters.

Ideal for use in workplaces, restaurants or smoking areas. You save energy costs because the devices switch off automatically after the time period you have set.



Operating voltage:

230 volts AC

Operation:

via touch

Operating temperature:

from approx. -20°C to + 40°C

Protection class:

IP 66

Areas of application

For controlling the wireless dimmers we offer.

Technical

Weight: 0.4 kg | Protection class: IP 66 | Power connection: 230V, for fixed cabling, protected with type C circuit breaker | Dimensions (WxHxD): 120 mm x 90 mm x 60 mm | Scope of delivery: Touch timer without cable

Power	Colour	Item number
up to 4.0 kW	Light grey	900010



XL mounting bracket

This bracket allows you to position your radiant heaters lower if the installation location is higher than normal.

This further shifts the efficiency of the heaters downwards. Recommended for installation above 3.0 m.

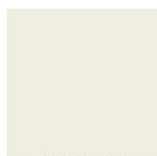
This bracket fits the Tansun SORRENTO and MONACO series. The material is corrosion-resistant, powder-coated aluminium. Retrofitting is possible at any time.



Dimensions:

90 mm x 500 mm

Colour	Designation	Item number
RAL 9010	Pure white	900021
RAL 9006	White aluminium	900022
RAL 9005	Deep black	900023
RAL 7016	Anthracite grey	900024



RAL9010
Reinweiß



RAL9006
Weißaluminium



RAL9005
Tiefschwarz



RAL7016
Anthrazitgrau



Replacement lamp/tube for Tansun infrared radiant heaters

Replacement tubes for infrared radiant heaters.



Power	Model	Item number
1.5 kW	Apollo, Spotter, Beaver	200418
2.0 kW	Apollo	200419
1.5 kW	Sorrento	200415IP
2.0 kW	Sorrento	202400IP