



# LONDON PACKAGING WEEK

OFFICIAL STAND BUILDER

# CONTENTS

<b>About</b>	Page 3
<b>Cost Guide</b>	Page 10
<b>Sustainability</b>	Page 15





ABOUT

MAR  
EXHIB



# ABOUT

Since 1996, Marsden Exhibitions have provided event and exhibition stand design, build and installation services that deliver best-in-class solutions.

Valuing the building of long-term relationships above all else, Marsden Exhibitions work across the globe for their clients delivering spaces of all sizes, from small shell schemes through to multi-level bespoke exhibition spaces.



# UNMATCHED EXPERIENCE

**27**  
YEARS

**250+**  
CLIENTS IN  
2024

**4.9**  
CUSTOMER  
RATING

**190+**  
STANDS BUILT  
IN 2024

**15**  
COUNTRIES

**100+**  
VENUES  
COVERED

# SOME OF OUR CLIENTS

Google



Diamondbrite



LIEBHERR



# SOME OF OUR CLIENTS

"We have used Marsden multiple times, and it is always an amazing experience with the whole team. They completely grasp and understand my vision each time, and bring it all to life better than I imagined it."



"Fantastic from start to finish. Stand won an award so I think that says it all. Wouldn't use anyone else - highly recommend and the team were super as it was our first show, they made the process seamless for us. Efficient and easy - perfect"



"I was extremely impressed with the service provided by Marsden. The design process was seamless. They understood our vision and executed our booth flawlessly. The people at Marsden are truly top-notch and easy to work with. I would highly recommend" working with them.



"Our exhibition booth was exactly as planned, the service was faultless and both design and build teams were first class. At the beginning of the project we knew very little as this was our first major trade show, the Marsden Team helped us immensely throughout and made the entire project effortless. Thank you very much."



REVIEWS PROVIDED BY  AND  Trustpilot

# RECOMMENDED STAND BUILDER FOR

**ADVANCED  
ENGINEERING**  
30 & 31 October 2024 | NEC Birmingham

**ACE**  
14 & 15 March 2025



**LONDON  
PACKAGING  
WEEK**





**GLOBAL NETWORK**

**United Kingdom**  
Head Office

**West Coast USA**  
Build Partner

**East Coast USA**  
Build Partner

**South America**  
Build Partner

**Central Europe**  
Build Partner

**UAE**  
Build Partner

**China**  
Build Partner



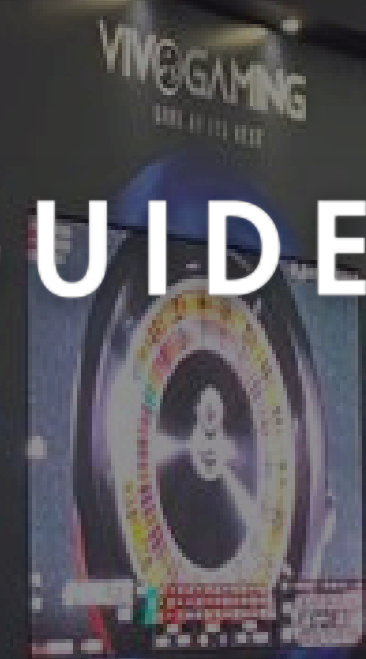


CASINO PROVIDER

PRICE GUIDE

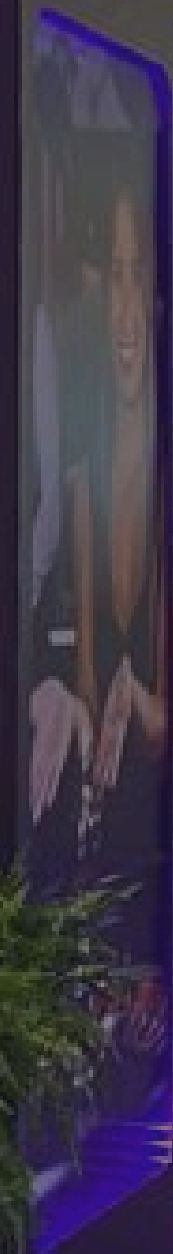


egation



VIVO GAMING

SLO HILL



PREMIUM CASINO GAMES

SLO HILL

www.vivogaming.com





M ARSDEN  
EXHIBITIONS

£50-100K+ \*

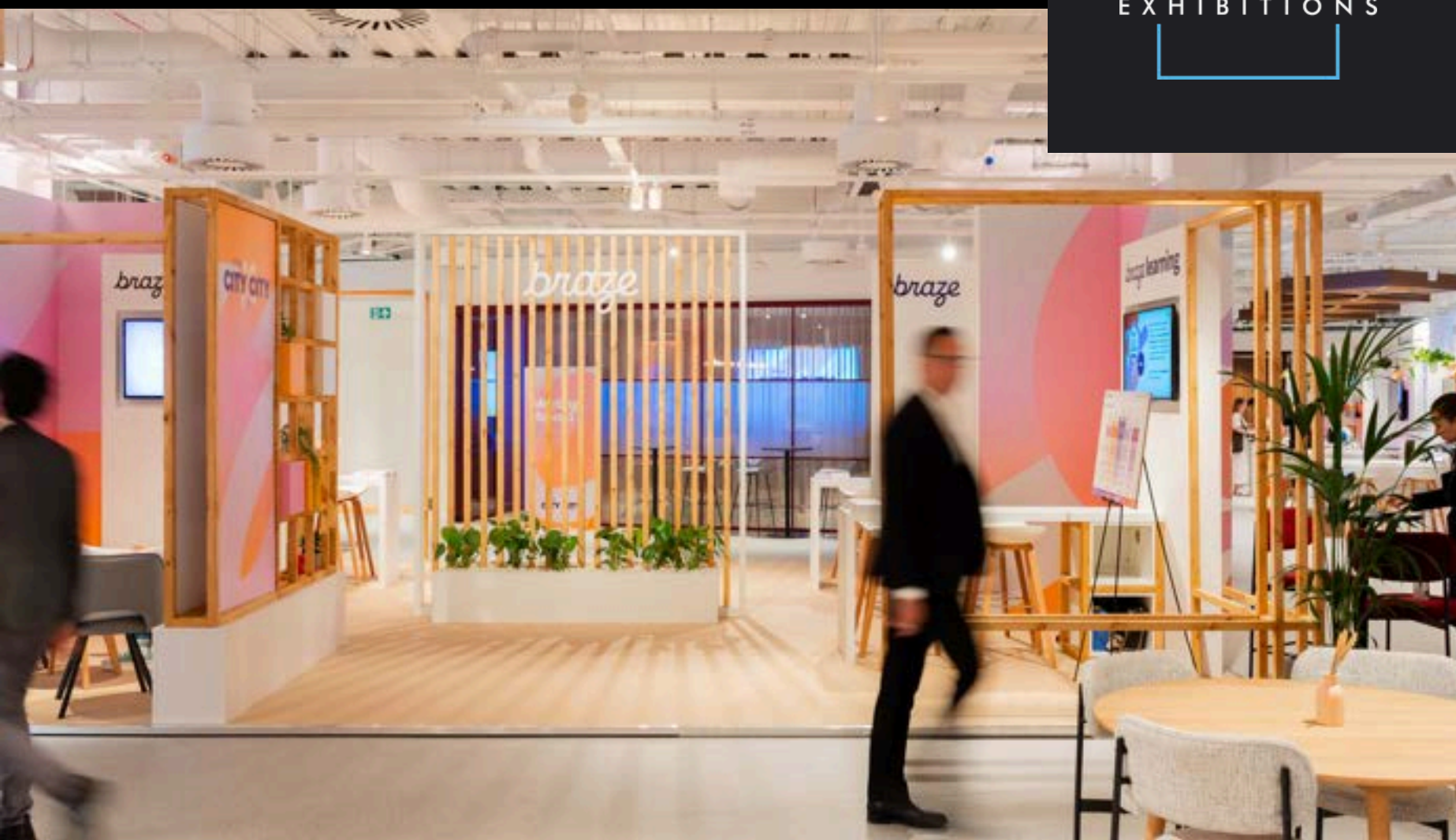






M ARSDEN  
EXHIBITIONS

£25-50K\*

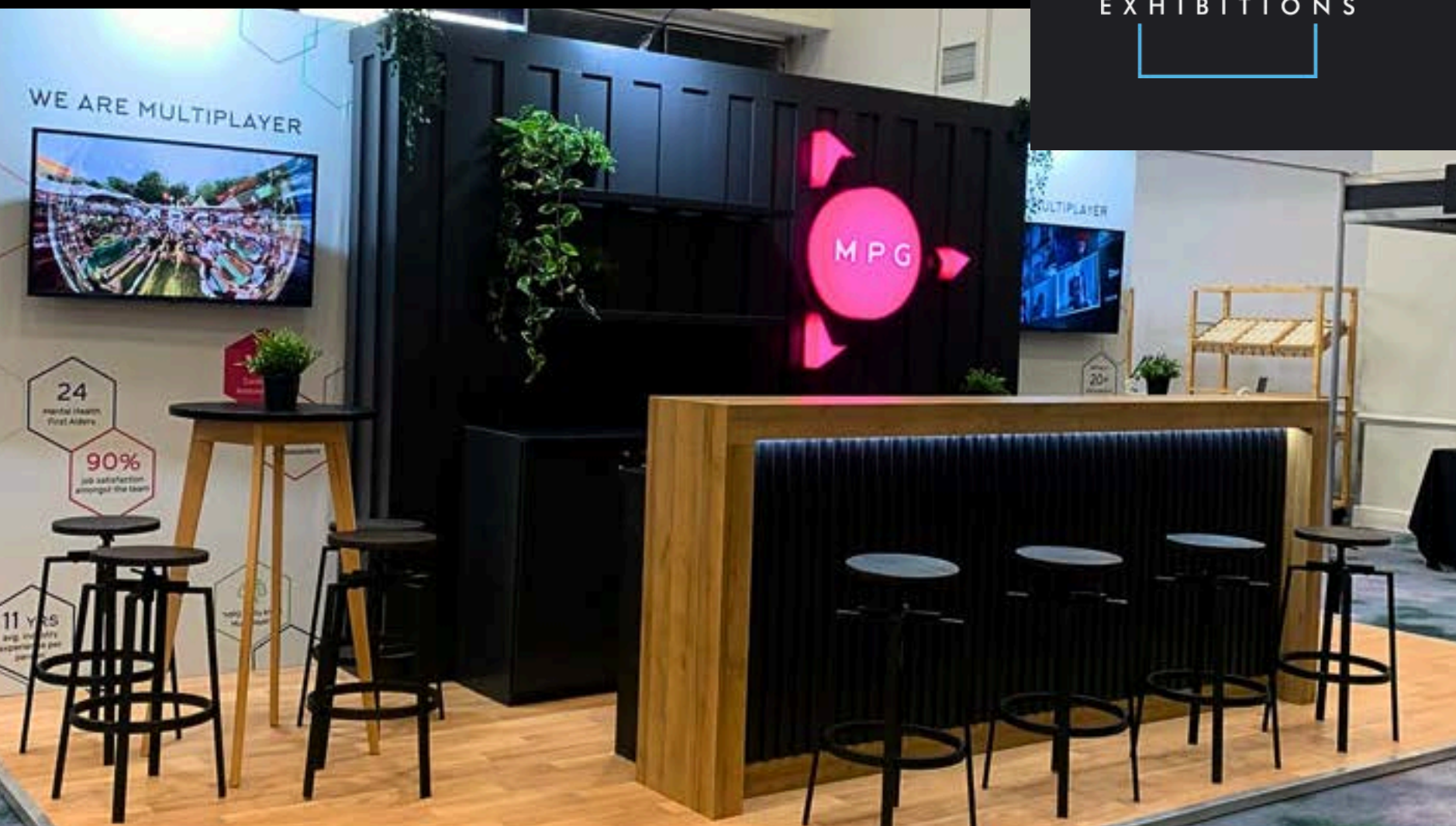






M ARSDEN  
EXHIBITIONS

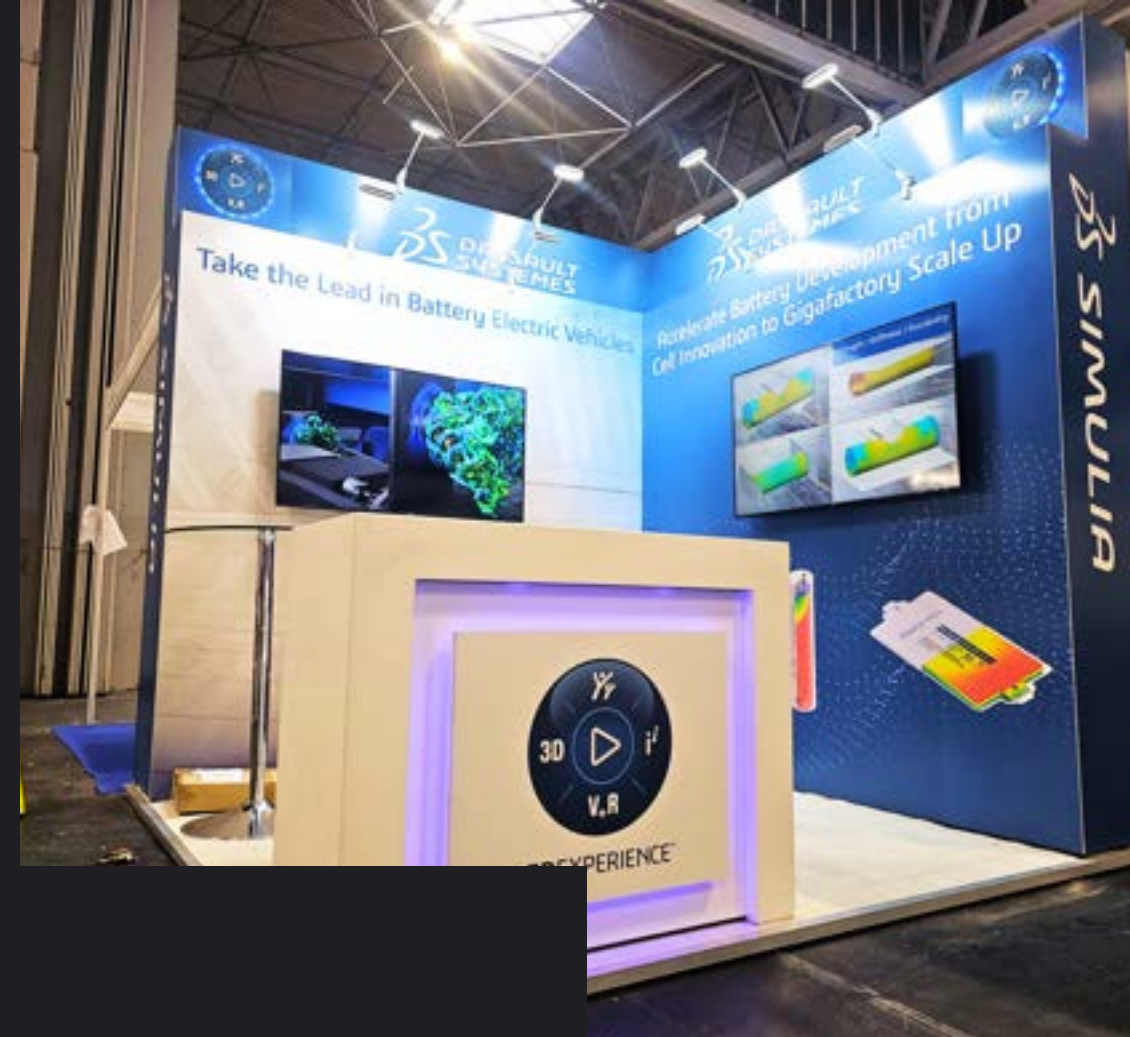
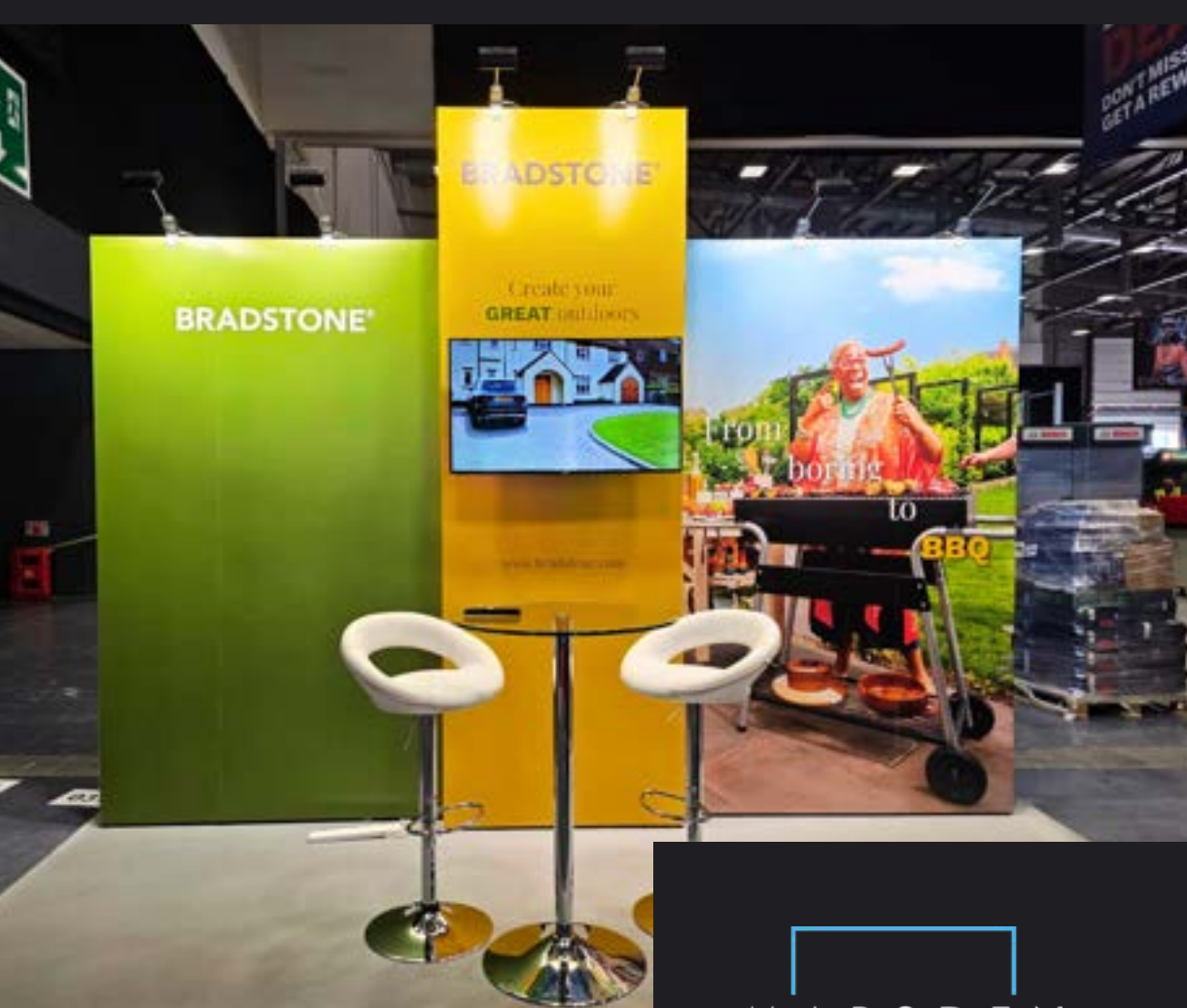
£10-25K\*





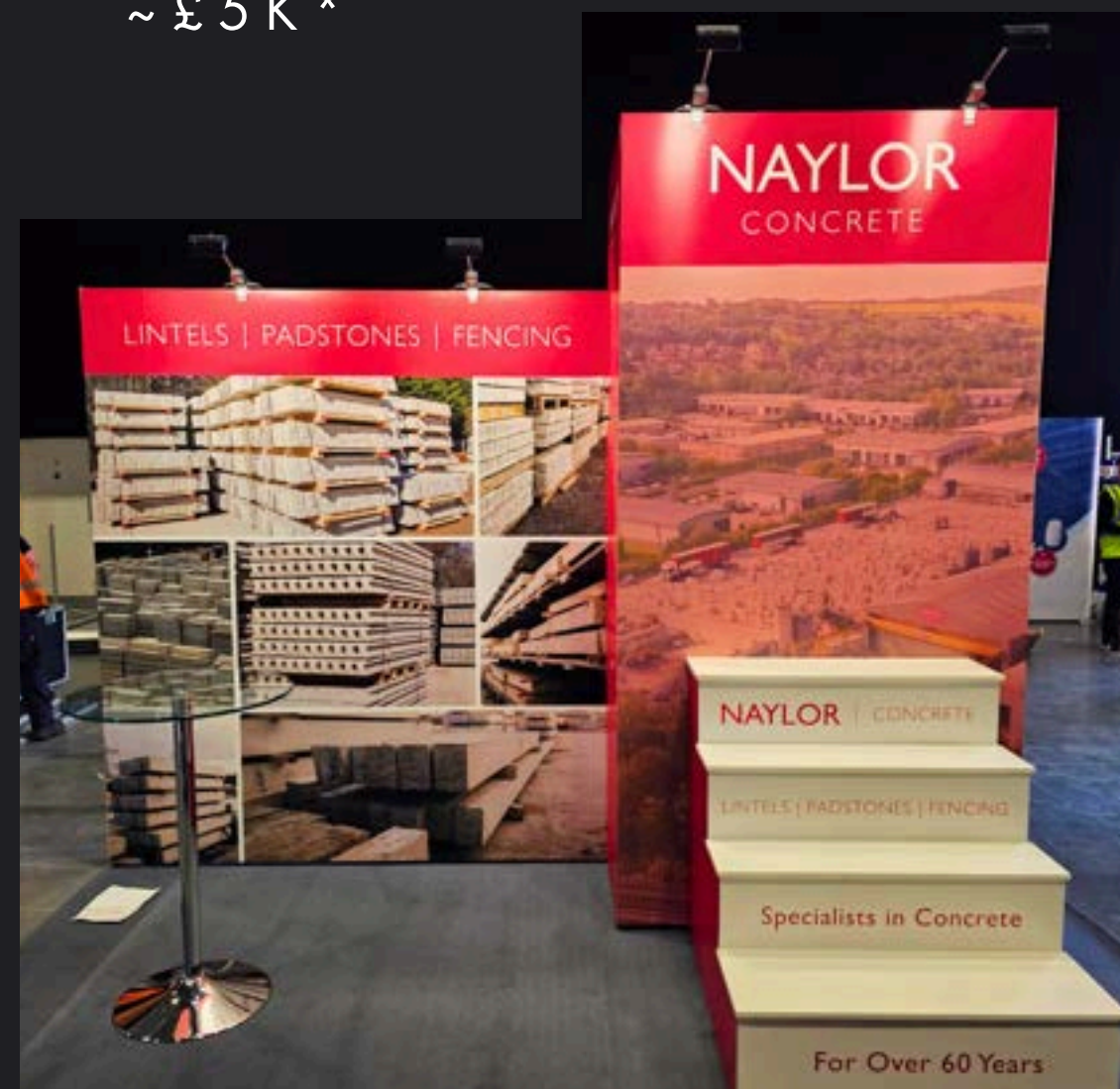







M ARSDEN  
EXHIBITIONS

~ £5K \*



\*=All prices displayed are indicative examples based on previous exhibition stand projects. Actual costs may vary significantly depending on factors including, but not limited to, project location, material choices, technology requirements, design complexity, size, and other bespoke specifications. These examples are for illustrative purposes only and do not constitute a fixed quote or guarantee of replication. Please contact us for a tailored quote specific to your requirements.





SUSTAINABILITY



## HP LATEX PRINTING



UL GREENGUARD Gold Certified: HP Latex inks meet this stringent standard for low chemical emissions, ensuring safer indoor environments

Water-based Inks contain no harsh chemicals or solvents like VOCs that contribute to air pollution and can be harmful to human health.

Nickel-free and non-flammable Latex inks pose minimal safety risks, avoiding hazardous warnings and special ventilation requirements.



UL ECOLOGO® Certified HP Latex inks are the only ones in the large format signage market to hold this prestigious eco-label

HP Latex printers typically consume less energy than conventional printers, further reducing our environmental footprint

Odourless prints, unlike solvent-based inks, HP Latex inks produce odourless prints, making them ideal for indoor environments





## WASTE AND ENVIRONMENTAL



### Reduce

In moving our core lines onto a recyclable alternatives and working strategically with waste partners, we hope to reduce our waste by up to 70% by 2030. This translates to over 20 tonnes of waste per year that would have otherwise have gone to landfill.



### Re-Use

We donate all carpets used on exhibition stands to charity, helping more families each month.



A photograph of several wind turbines on a grassy hill under a clear blue sky. The turbines are white with three blades each. The text 'ENERGY AND WATER' is overlaid in white capital letters on the left side of the image.

## ENERGY AND WATER

Renewable electricity from solar, wind and hydroelectric sources.

Carbon neutral gas backed by a combination of RGGOs and carbon offset certificates.

Lights and electrical equipment are switched off when not in use.

Heating adjusted using Delta Dore intelligent scheduling.

Water reducing taps with auto stop sensors.

Wood offcuts used in our biomass boiler, reducing waste and fossil fuel use.





# MARSDEN MODULAR: DESIGNED FOR RE-USE

Aluminium frame that can be used time and time again, and 100% recycled at end of life.

Reusable graphics reduce waste to landfill and reduce costs for our clients.

100% recyclable graphic media eliminates landfill waste.

Where possible, we prioritise the use of local labour and materials to reduce CO2 and benefit our community.

Carpets that cannot be reused go directly a charity that supplies low-income housing.

We have an appointed environmental team who meet each month to discuss ways to move the policy forward.



