



Human .  
Design .  
Technology .

**NEU**  
**NEW**

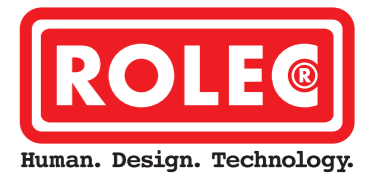


## **profiCASE**

Robust aluminium enclosures for HMI/IPC  
devices up to 10" and electronic components.

# profiCASE — control enclosures with endless possibilities

Optimised for HMI/IPC applications up to 10“.



## Perfect for modern engineering.

The profiCASE range consists of two enclosure sizes that cover all applications for panel PCs up to 10“. Individual cut-outs for switches, buttons and other control elements can be easily integrated. The moulded handle strips ensure ergonomic and safe handling. The integrated hinges, which are not visible from the front, prevent the cover from being lost. If necessary, the cover can be removed quickly and easily by loosening the two mounting screws.

Connecting profiCASE to our profiPLUS 50 or taraSMART suspension arm systems creates the ideal conditions for a harmonious overall appearance and optimal usability. Additionally, profiCASE is perfectly suited for both direct wall mounting and installation on system profiles.



Ergonomically integrated handle strips for perfect usability.



Connection to the profiPLUS 50 or taraSMART support arm systems is possible in a standing or hanging position.



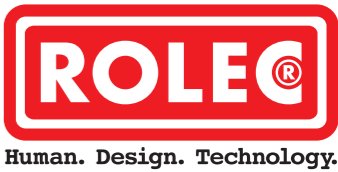
profiCASE is also suitable for direct attachment to system profiles.



A VESA 100 connection is possible thanks to integrated mounting domes, ensuring a completely secure fit.

# profiCASE – robust enclosures for demanding applications

Perfect for electronic installations and special applications.



**Ideal for heavy-duty applications.**  
Displays, switches, buttons, touch keypads – everything finds its place in the two profiCASE enclosures and is well protected even in extreme environments such as tankers, construction site vehicles or underground mining.

Robust profiCASE enclosures are made from high-quality diecast aluminium (manufactured using 100% recycled material) and are ideal for harsh environments. Standard integrated hinges ensure the lid remains firmly connected to the base at all times. Thanks to the moulded handle strips, the profiCASE is also suitable for mobile applications.



The version with front screw-on cover (PCV) is ideal for direct mounting on a vehicle or wall.



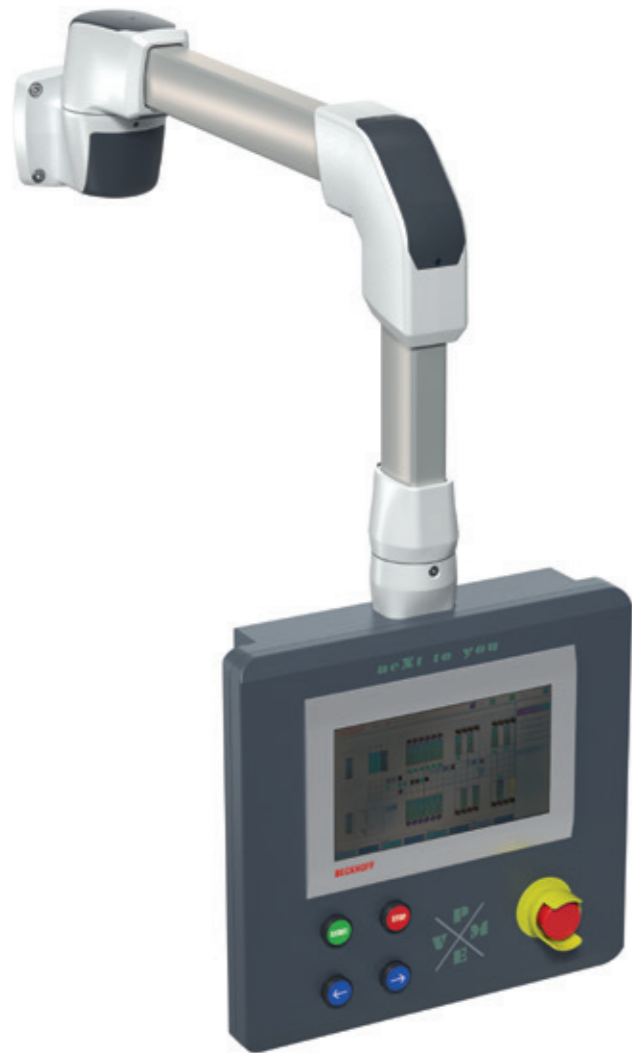
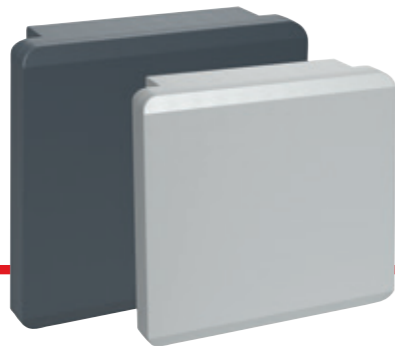
Front cover mounting screws are outside of the active area, leaving it almost completely free.



The captive lid is held in place by integrated hinges that are not visible from the front.



The opening angle of the captive lid is 95°.



## Industry diversity meets experience.

Since the 1980s, ROLEC has been a reliable partner in mechanical engineering, providing tailor-made solutions for a wide range of industries. Our support arm systems and HMI enclosures impress with their high quality, well thought-out design and versatile application options.

With **profiPANEL**, **multiPANEL**, **profiPLUS** and **taraSMART**, we offer modular HMI/IPC enclosures and suspension arm systems for modern operating concepts and complex machine environments.

**profiCASE** is the additional, economical alternative for panel PCs up to 10" and electronic installations of all kinds. Thanks to its robust construction, it is perfectly suited for both modern mechanical engineering and vehicle manufacturing.

## profiCASE

The robust aluminium enclosure

**Key product features:**

- Enclosure material: diecast aluminium
- Enclosure surface: powder coating RAL 7016 or RAL 7035
- Integrated handle strips
- Integrated hinge solution, captive lid
- The opening angle of the lid is 95°
- Connection options:
  - Direct mounting on the machine body/vehicle
  - profiPLUS 50 or taraSMART suspension arm systems
  - VESA 100 connection
- Protection class: IP 65/66, IP 67
- Enclosure seal: PUR

Type	Art.-No.	Width (mm)	Height (mm)	Depth (mm)	Installation up to panel size	Enclosure surface RAL 7016	Enclosure surface RAL 7035	Cover screw connection from the front
PCV 07	121.320.016	320	300	85	7"	•		•
PCV 10	121.400.016	400	380	85	10"	•		•
PCV 07	121.320.035	320	300	85	7"		•	•
PCV 10	121.400.035	400	380	85	10"		•	•
PCD 07	122.320.016	320	300	85	7"	•		
PCD 10	122.400.016	400	380	85	10"	•		
PCD 07	122.320.035	320	300	85	7"		•	
PCD 10	122.400.035	400	380	85	10"		•	

• Standard

**Good to know:**

As a rule, any panel PC up to 10" can be installed in profiCASE. These specifications are for reference only. Please refer to the PC manufacturer's specifications regarding air circulation values. If applicable, please also specify any desired accessories in your enquiry/order.

**Technical Data**

<b>Surface</b> Powder coating RAL 7016 or RAL 7035	<b>Protection class</b> IP 65/66 / EN 60529 IP 67 / EN 60529	<b>OPTIONAL:</b>  <b>Surface</b> Special colours	<b>Matching suspension arm systems</b> profiPLUS 50, taraSMART
<b>Closure</b> Integrated hinges, 2 cover screws inserted from the rear			



Human .  
Design .  
Technology .



Plant and equipment engineering



Automobile Industry



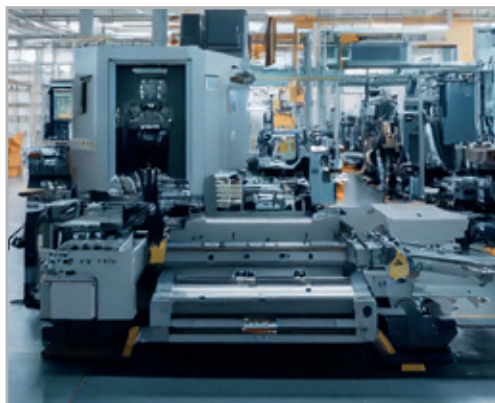
Energy Engineering



Process Engineering



Packaging Machines



Machine Tool Engineering

Suitable for all common HMI/  
IPC panel manufacturers:



Other manufacturers

ROLEC Gehäuse-Systeme GmbH  
Kreuzbreite 2  
31737 Rinteln  
Germany  
Phone +49 5751 4003-0  
info@rolec.com

