

CRITICAL RAW MATERIALS

The Critical Raw Materials Group investigates and develops recovery routes for critical raw materials. This includes recovering additional materials from mine tailings through to end-of-life recovery. Work carried out ranges from laboratory research through to pilot scale research to assess opportunities to improve existing processes and develop new technologies for primary and secondary raw materials recovery.

Capabilities

The Group investigates how to recover critical raw materials, with flexibility to switch between different methodologies. This includes using hydrometallurgy and pyrometallurgy processes where proofed concepts can be identified, demonstrated and scaled-up.

Cross sector support is available with the capability to match pyrometallurgical and hydrometallurgical treatments to suit process flow sheet requirements.

Benefits

- > Proven ore recovery options using a range of equipment
- > Reduced expenditure through streamlined analysis
- > Proofing and scale-up capability enabling validation of recovery processes

Services

- > Development of materials recovery routes
- > Hydrometallurgical recovery of materials
- > Pyrometallurgical recovery treatments
- > On site research, testing and analysis
- > Materials characterisation
- > Proof of concept studies
- > Scale-up studies
- > Bespoke process development

Facilities

Specialist equipment and facilities enabling hydrometallurgical and pyrometallurgical treatments to support materials recovery along with materials characterisation and analysis.



**Materials
Processing
Institute**

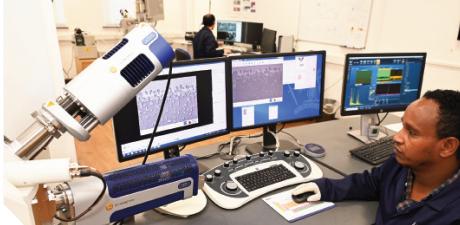
Research and Technology

Scan the relevant QR code to find out more about key areas in which we provide research and technology support.

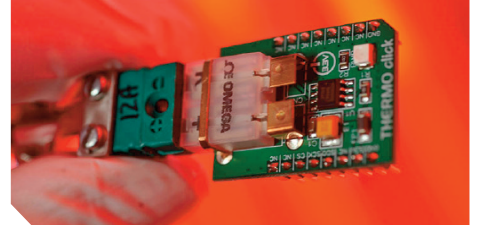
CHARACTERISATION AND ANALYSIS



SCAN QR Code
to find out more



SCAN QR Code
to find out more



CRITICAL RAW MATERIALS



SCAN QR Code
to find out more



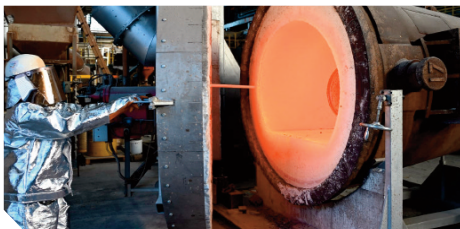
SCAN QR Code
to find out more



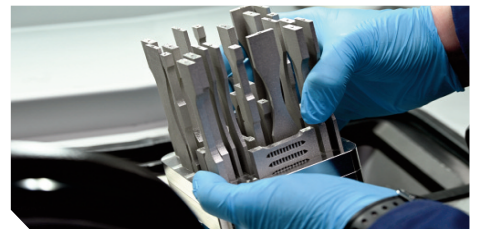
ENERGY AND PROCESS DECARBONISATION



SCAN QR Code
to find out more



SCAN QR Code
to find out more



GREEN METALS



SCAN QR Code
to find out more



SCAN QR Code
to find out more



Address:

Materials Processing Institute
Eston Road
Middlesbrough
TS6 6US
United Kingdom

Contact Details:

t: +44 (0)1642 382000
enquiries@mpiuk.com
www.mpiuk.com