

The image displays several components of the HepcoMotion Simple Select vee slide linear guidance system against a solid red background. There are three black rectangular sliding blocks of varying sizes, each featuring a grid of circular mounting holes. These blocks are shown mounted on long, black, T-shaped extruded rails. The rails have a distinctive V-shaped groove on their top surface. The components are arranged in a staggered, overlapping fashion, showing different angles and how they fit together. The lighting creates soft shadows, emphasizing the three-dimensional nature of the parts.

# HepcoMotion<sup>®</sup>

## Simple Select<sup>®</sup>

vee slide linear  
guidance system

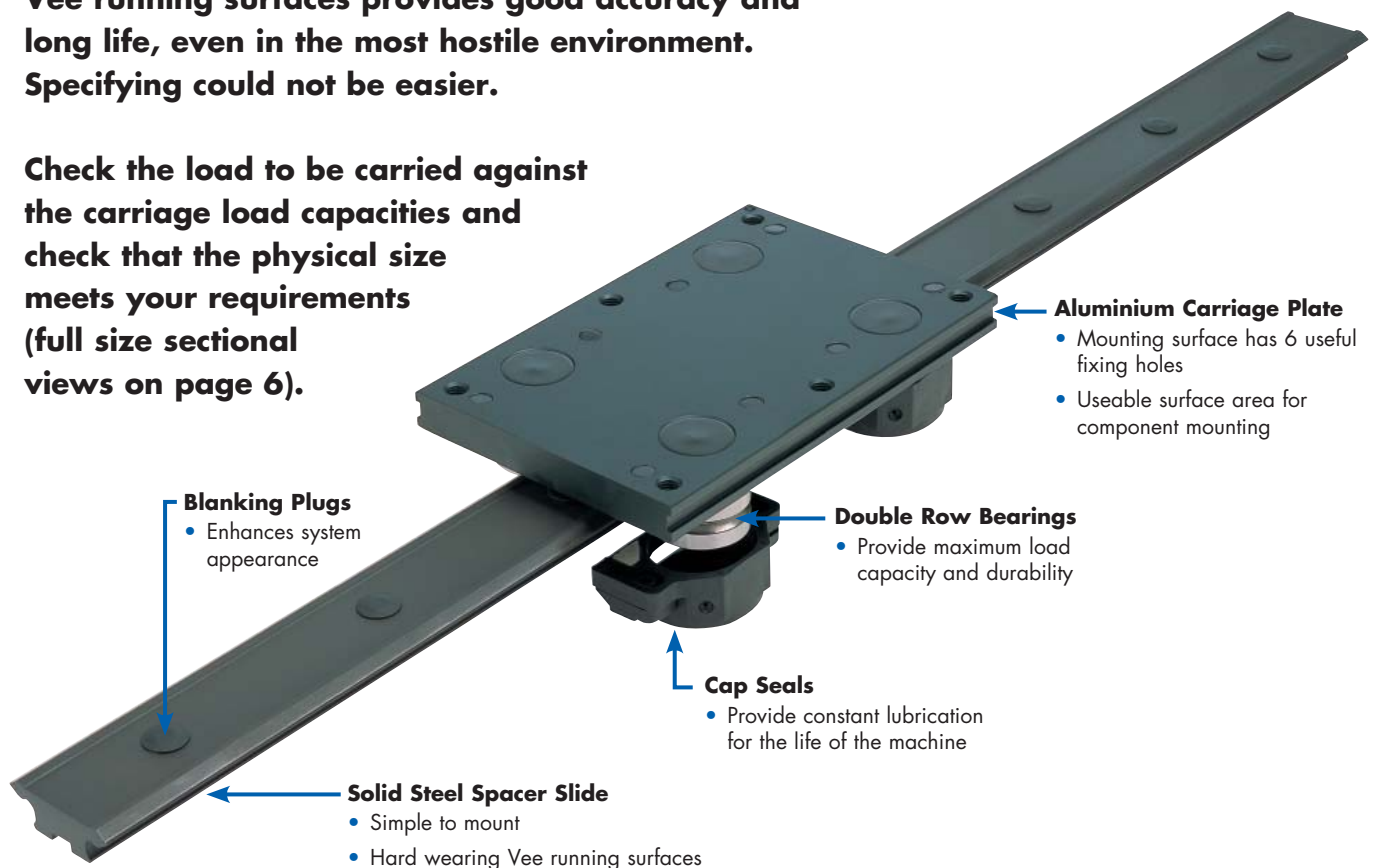
a range of  
assembled vee slide  
systems despatched in  
24 hours or less

simple to specify  
simple to order

# Introducing **HepcoMotion** Simple Select® Vee Slide Linear Guidance Systems

Hepco Simple-Select® offers four useful sizes of spacer slides supplied in 24 hours or less complete with carriages assembled ready for installation. All units are fitted with double row bearings and cap seals to ensure a long and trouble-free life. Our general purpose spacer slide precision cold drawn and hardened on the Vee running surfaces provides good accuracy and long life, even in the most hostile environment. Specifying could not be easier.

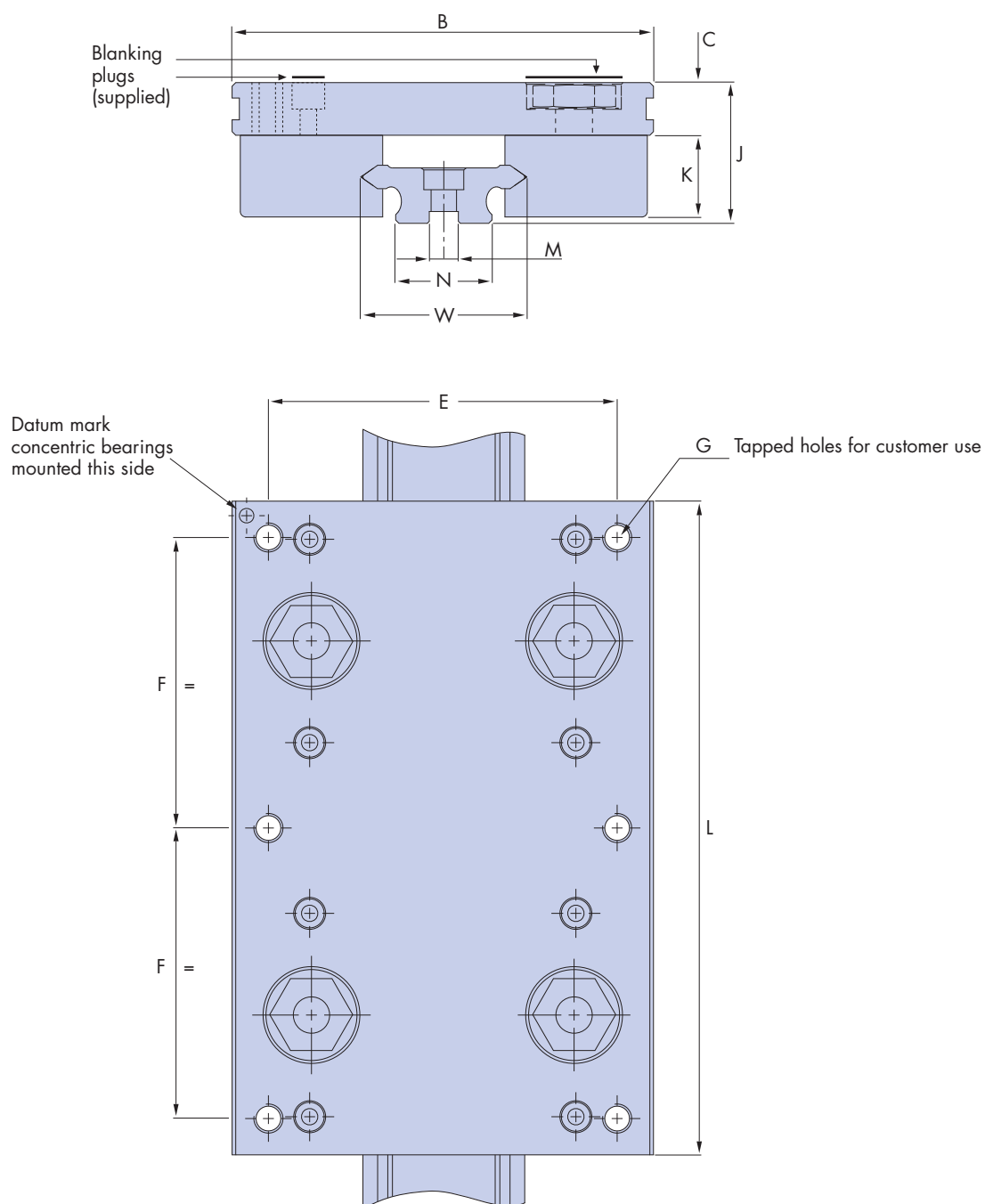
Check the load to be carried against the carriage load capacities and check that the physical size meets your requirements (full size sectional views on page 6).



## Benefits

- Select standard range of 4 popular sizes ready for despatch in 24 hours or less
- Utilises proven Hepco Vee Slide technology – ideal for high speed/short stroke movements
- Low installation time simply bolt slide down
- Can be fitted to unmachined surfaces if required
- System compliance – ideal for fitting to aluminium profiles
- Accurate drawn slide allows smooth low friction movement
- Double row bearings for long and trouble free life
- Fitted cap seals prevent dirt ingress and ensure constant positive lubrication
- Induction hardened Vee slide – low wear characteristics
- Quiet in operation

## Dimensional Data



Size	W	B	C	J	K	L	M	N	E	F	G
<b>20</b>	20	64	10	24.95	14	100	5 x 2	12.4	50	44	6 x M5
<b>25</b>	25	80	11.5	30.7	18	135	6 x 2.5	15.4	65	60	6 x M6
<b>44</b>	44	116	14.5	38.7	22.5	180	8 x 3	26.4	96	80	6 x M8
<b>76</b>	76	185	20	58.7	36.5	300	15 x 5	50.4	160	135	6 x M10

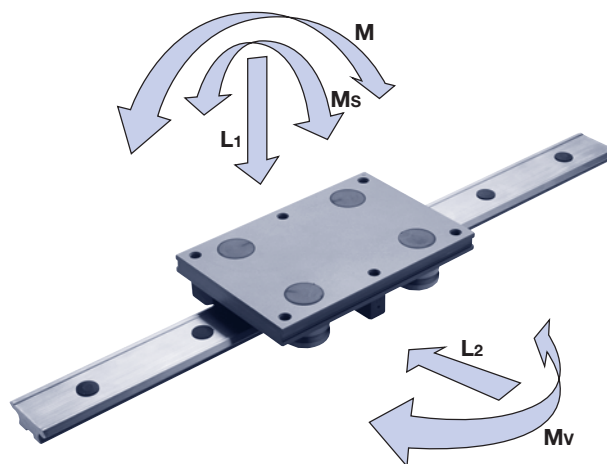
For a more extensive range of options please refer to our GV3 Catalogue

## Load/Life Data

Components used in the Simple-Select® range will provide the user with the best combination to achieve a long and trouble free life in clean or arduous environments. Fitted cap seals cover double row bearings and provide a reservoir for grease lubrication and to prevent dirt ingress. In most cases a single application of grease, which Hepco provide on assembly of the unit, will last for the life of the machine.

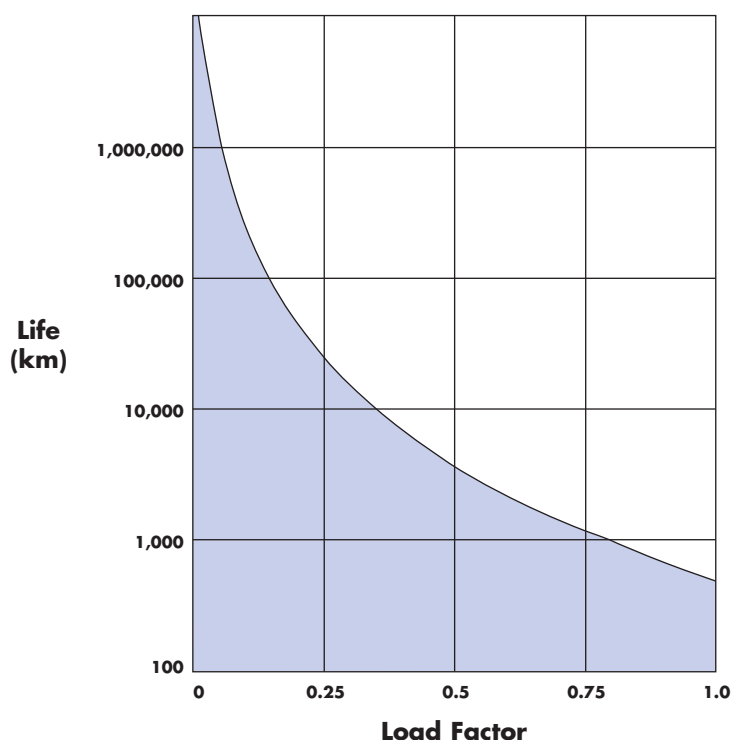
### Simple Life Check

Most applications involve central L1 loads. In these cases simply divide your load (N) by the carriage L1 capacity figure below to determine a load factor. Then simply read off the life from the graph. For offset loads you will need to add the relevant load factors to determine the total. Load Factor should not exceed 1.



Size	Carriage Capacities				
	L1(N)	L2(N)	Ms(Nm)	Mv(Nm)	M(Nm)
20	435	685	4	19	12
25	800	1500	9	56	30
44	2800	4700	57	243	146
76	10000	10000	360	990	990

$$\text{Load Factor} = \frac{\text{Load Carried}}{\text{Carriage Capacity}} = \frac{L1}{L1_{(\max)}} + \frac{L2}{L2_{(\max)}} + \frac{Ms}{Ms_{(\max)}} + \frac{Mv}{Mv_{(\max)}} + \frac{M}{M_{(\max)}}$$



## Ordering Details

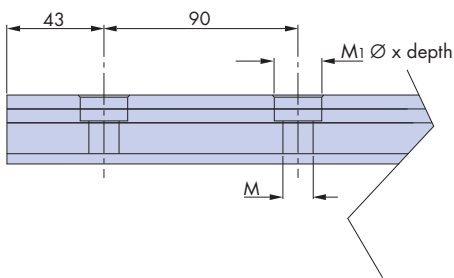
Available slide lengths from the Simple-Select® range are shown in the chart below:

Slide Size	Slide Lengths in mm										
<b>20</b>	266	356	536	716	896	1076	1256	1436	1616	1796	1976
<b>25</b>	266	356	536	716	896	1076	1256	1436	1616	1796	1976
<b>44</b>	266	356	536	716	896	1076	1256	1436	1616	1796	1976
<b>76</b>	–	–	536	716	896	1076	1256	1436	1616	1796	1976

Other lengths available on request up to 4m (not Simple-Select® service).

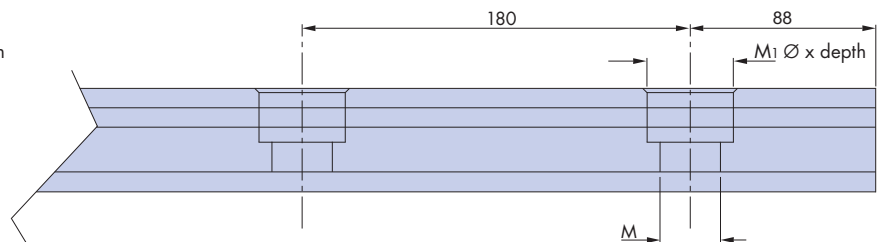
### Slide Hole Centres

**Sizes 20,25,44**



Size	M	M1
<b>20</b>	4.5	8 x 4.1
<b>25</b>	5.5	10 x 5.1
<b>44</b>	7	11 x 6.1

**Size 76**



Size	M	M1
<b>76</b>	14	20 x 12

**To Order** – Simply specify slide size, number of fitted carriages and slide length

**Example**      **20**      **1**      **–**      **1076**

Slide Size \_\_\_\_\_

Number of fitted carriages \_\_\_\_\_

Slide Length (mm) \_\_\_\_\_

Units are supplied with carriages adjusted ready for mounting.



## Technical Specifications

### 'V' Slides

Material and Finish: High carbon bearing steel AISI 52100, hardened on 'V' faces to 58-62 Rockwell 'C' scale. Slide will be supplied with chemical black or similar finish.

### Bearings

Bearing Raceways and Balls: Carbon-chromium bearing steel AISI 52100, hardened and tempered.  
Shields: Steel, except size 18 which has nitrile rubber seals.  
Cage: Plastic.  
Studs: High Tensile Steel with tensile strength = 695 N/mm<sup>2</sup>. Chemical black finish.  
Temperature Range: -20°C to +120°C

### Carriage Plates

Material: High Strength Aluminium Alloy  
Finish: Black Anodised

### Carriage Plate & Slide Counterbore Plugs

Material: Plastic

### Cap Seals

Material: Body: Thermoplastic elastomer  
Inserts: Impact resistant plastic  
Wipers: Felt  
Temperature Range: -20°C to +60°C

### Frictional Resistance for 'V' Slide Systems

To determine frictional resistance use  $0.02 \times \text{Load (N)} + \text{Seal Friction (N)}$ .

Seal friction figures: Size 20 = 4 N      Size 25 = 7 N  
Size 44 = 15 N      Size 76 = 28 N

### External Lubrication

Cap Seals will be supplied lubricated, further lubrication is not normally necessary unless a high duty cycle/speed is involved. In these cases re-lubrication with a grease NLGI consistency No. 2 will suffice.

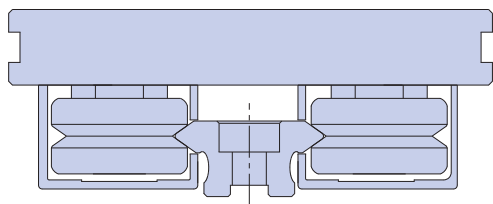
### Maximum Linear Speeds for 'V' Slides & Bearings.

Lubricated 'V' Slides = 8 m/s

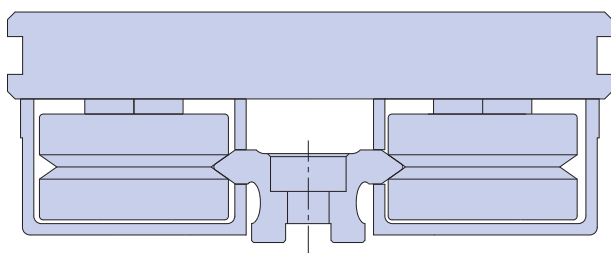
Material specifications may change for reasons of technical advantage or availability.

## Full Size Sectional Views

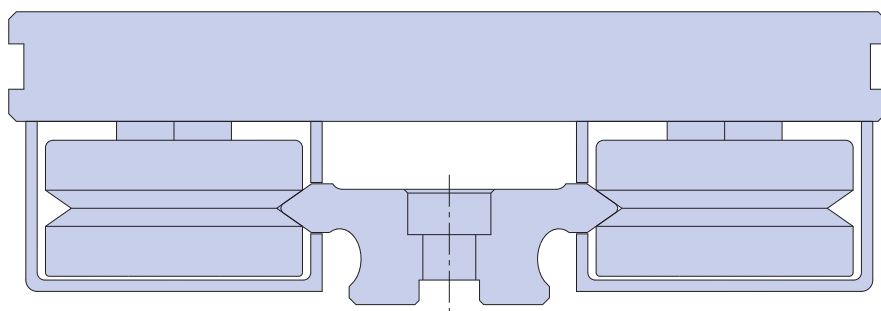
**Size 20**



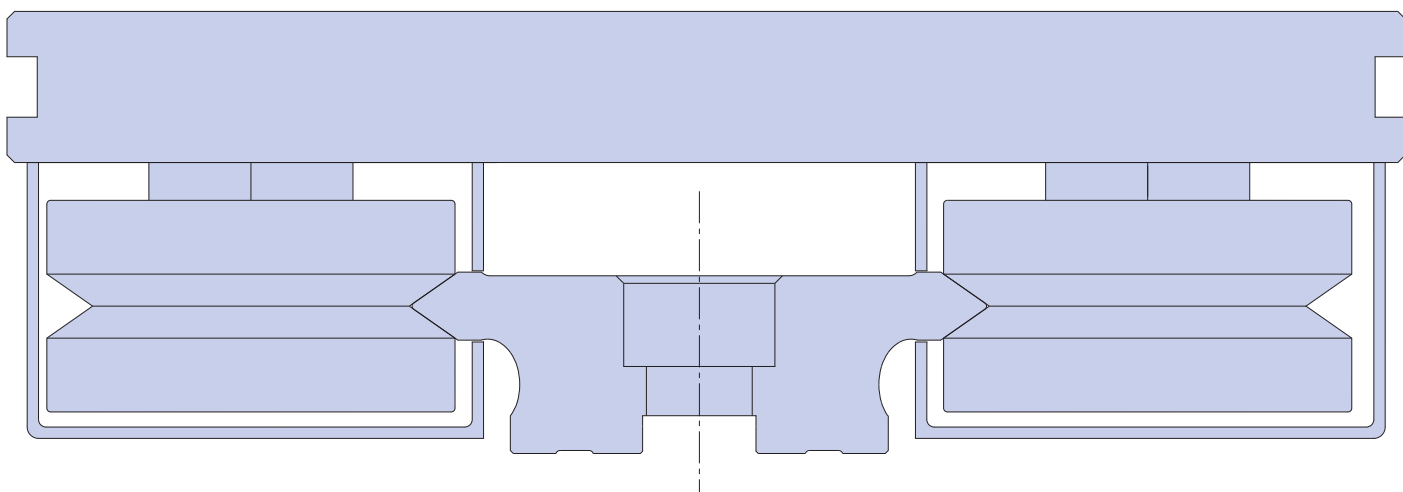
**Size 25**



**Size 44**



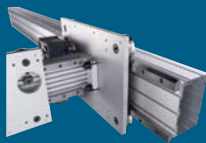
**Size 76**



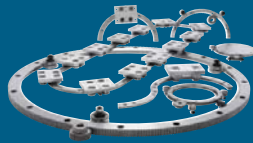
# HepcoMotion® Product Range



**GV3**  
Linear Guidance and  
Transmission System



**HDS2**  
Heavy Duty Slide System



**PRT2**  
Ring Slides and  
Track System



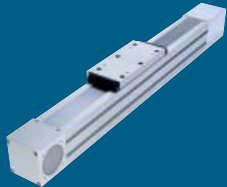
**HDRT**  
Heavy Duty Ring Slides  
and Track System



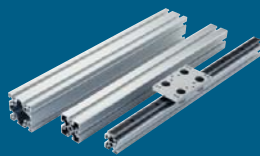
**SL2**  
Stainless Steel Based  
Slide System



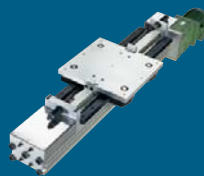
**LBG**  
Linear Ball Guides



**SBD**  
Sealed Belt  
Drive



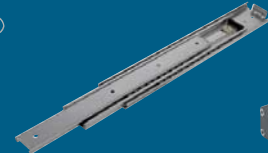
**MCS**  
Aluminium Frame  
and Machine  
Construction System



**HDLS**  
Heavy Duty Driven  
Linear System



**DLS**  
Linear Transmission and  
Positioning System



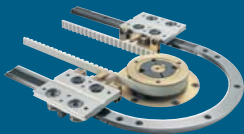
**HTS**  
Telescopic Ball  
Bearing Slides



**HPS**  
Powerslide-2 Guided  
Rodless Cylinder



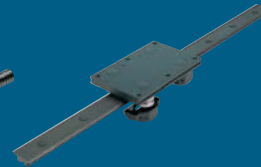
**MHD**  
Driven Track System



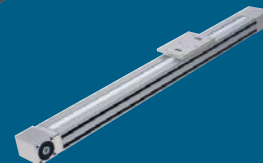
**DTS**  
Driven Track System



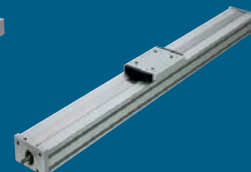
**BSP**  
Ballscrew Premier



**Simple Select®**  
Vee Slide Linear  
Guidance Systems



**PDU2**  
Profile Driven Unit



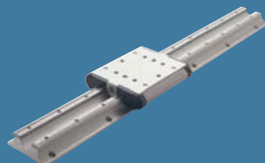
**PSD 120**  
Profile Screw Driven Unit

## BishopWisecarver Product Range

HepcoMotion® – Exclusive European partners and distributors for Bishop-Wisecarver since 1984.



**DUAL VEE®**  
Single Edge Slide System



**LoPro®**  
Aluminium Based  
Slide System



**UtiliTrak®**  
Lightweight U Channel  
Guideway

For further information on HepcoMotion® products –  
please request our leaflet 'FPL'

**HepcoMotion®**  
[www.HepcoMotion.com](http://www.HepcoMotion.com)

**Simple Select®**



INVESTOR IN PEOPLE

Lower Moor Business Park, Tiverton Way, Tiverton, Devon, England EX16 6TG  
Tel: +44 (0)1884 257000 Fax: +44 (0)1884 243500  
E-mail: [sales@hepcotion.com](mailto:sales@hepcotion.com)



CATALOGUE No. SS 04 UK © 2013 Hepco Slide Systems Ltd.

Reproduction in whole or part without prior authorisation from Hepco is prohibited. Although every effort has been made to ensure the accuracy of the information in this catalogue, Hepco cannot accept liability for any omissions or errors. Hepco reserves the right to make alterations to the product resulting from technical developments.

Many Hepco products are protected by: Patents, Copyright, Design Right or Registered Design. Infringement is strictly prohibited and may be challenged in law. The Customer's attention is drawn to the following clause in Hepco's conditions of sale:

'It shall be the Customer's sole responsibility to ensure that goods supplied by Hepco will be suitable or fit for any particular application or purpose of the Customer, whether or not such application or purpose is known to Hepco. The Customer will be solely responsible for any errors in, or omissions from, any specifications or information the Customer provides. Hepco will not be obliged to verify whether any such specifications or information are correct or sufficient for any application or purpose.'

Hepco's full conditions of sale are available on request and will apply to all quotations and contracts for the supply of items detailed in this catalogue.

HepcoMotion is the trading name of Hepco Slide Systems Ltd.



Scan this QR Code  
to Link Directly to the  
**HepcoMotion Homepage**