

MPERIA® LASER

Fiber & Fiber Film Laser Systems Powered by MPERIA®

MPERIA® Fiber & Fiber Film lasers deliver high contrast, ultra-reliable marking on your production line. Permanent marks that are sharp and well defined at high speeds improves uptime, and a consumable-free system advances sustainability efforts.

EXCEPTIONAL MARKING & CODING

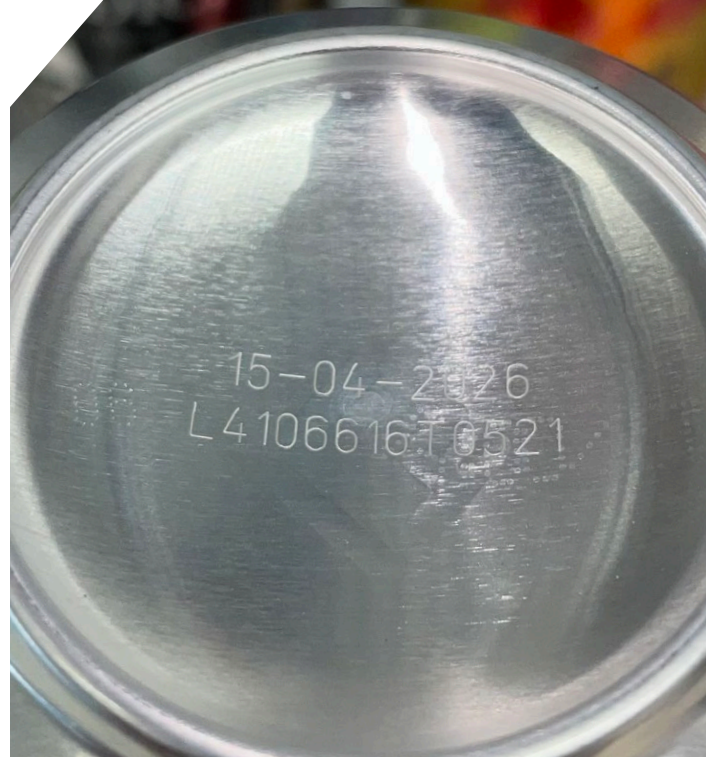
- 99.9% uptime
- No consumables to replace
- Minimal maintenance to perform

UNMATCHED PERFORMANCE

- Laser sharp marking with VCS (Vibration Correction System)
- Unparalleled precision and permanency regardless of handling
- Consumable-free sustainability

INCREASE PRODUCTION LINE EFFICIENCY

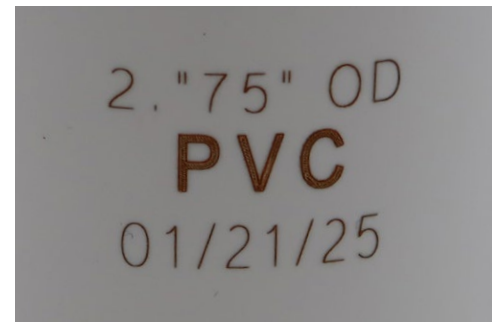
- Operator ease of use with an intuitive color touchscreen
- Centralized operation and single point of control
- Multiple technology control, including 3rd party, from a single interface



Metal part mark.



Tetra Pak mark.



PVC pipe mark.



MPERIA® Fiber Laser
20W/50W/100W
Dusty Environment



MPERIA® Fiber Film Laser
50W Dusty Environment



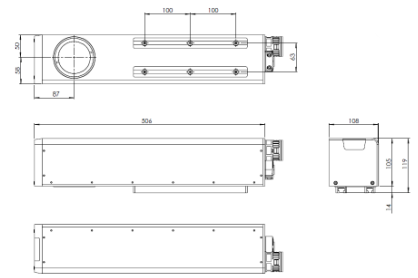
MPERIA® Fiber Laser
20W/50W/100W
Washdown Environment



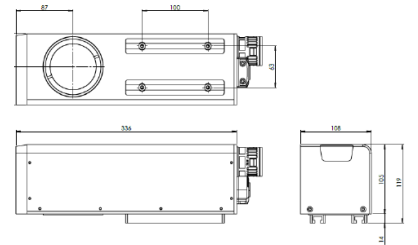
MPERIA® Fiber Film Laser
50W Washdown Environment

MPERIA® Laser Specifications

LASER	20W FIBER, DE	20W FIBER, WE	50W FIBER, DE	50W FIBER, WE	100W FIBER, DE	100W FIBER, WE	50W FIBER FILM, DE	50W FIBER FILM, WD
WAVELENGTH	1,064 nm							
COOLING	Air (SE, DE)/ Forced Air (WD)							
CONFIGURABLE	Yes							
MAIN SUPPLY	110 / 240 V AC							
DIMENSIONS (AxBxC)	108x105x506 mm						108x105x336 mm	
WEIGHT	71 lb / 32 kg						66 lb / 30 kg	
SYSTEM	Ytterbium Pulsed Fiber Laser							
MARKING FIELD	60x60, 100x100, 107x107, 160x160, 212x212, 242x242, 325x325, 560x560							
MARKING HEAD	XQS						UHS	
MARKING HEAD ACCESSORIES	Beam Exit at 90°: Standard							
	Focal Distance Indicator: Optional							
	Marking Area Indicator: Standard							
ACCESSORIES / OPTIONS	Diode Marking Pointer / Encoder Kit / Mounting Support / Photocell Kit							
APPLICABLE CERTIFICATIONS	CE, EAC, UL, UKCA							
ENVIRONMENTAL CONDITIONS	Operating Temperatures		10° C (50° F) to 40° C (104° F)					
	Humidity		10% < H < 95%, non-condensing					
	Protection Rate		DE (Dusty Environment) IP54, IP55					
			WD (Wash-Down Environment) IP65					



Fiber 20W, 50W, 100W Dimensions.



Fiber Film 50W Dimensions.

MPERIA® Controller Specifications

OPTIONS	8"	12"	12" ENCLOSED	15" HE
STANDARD FEATURES	Single Control	Multiple Printer Control		
USB PORTS	2			
ETHERNET PORTS	1xExt/1xInt			
SERIAL PORTS	1 M12	2xRS232		
IP RATING	IP55	IP40	IP54	IP65
ELECTRICAL	100-240V 50/60 hz 1A (PoE)	96-264V 50/60Hz 1A (24v Power Supply)		