



P-KUBE Lite Safety Handle



Passion for Quality

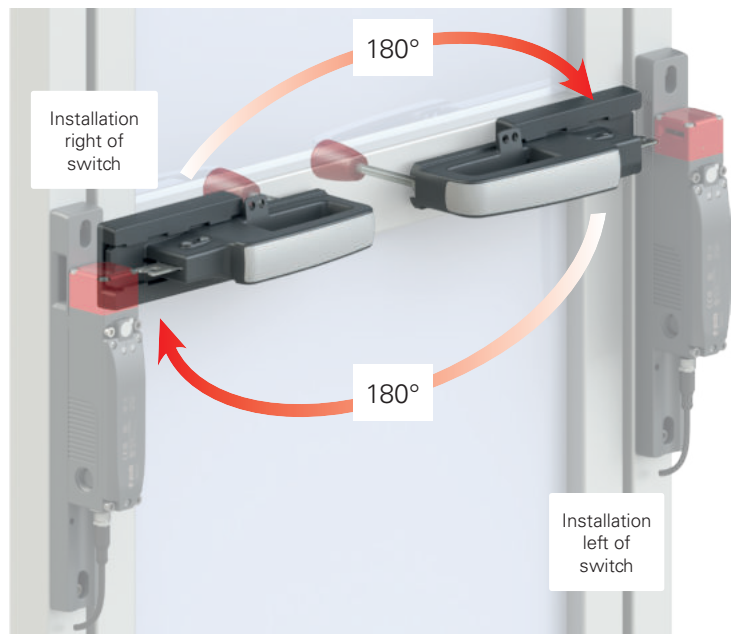
DESCRIPTION

New P-KUBE Lite Safety Handle

The P-KUBE Lite safety handle is compatible with Pizzato Elettrica FY and FG series safety switches, offering a complete safety system. The intuitive, ergonomic design ensures a comfortable grip, while the sliding mechanism enables easy activation of the switch with minimal effort. Equipped with a key lock, the handle allows addition of a “lock-out device” to increase security, reducing the risk of accidents or unauthorised access. Made of a resistant technopolymer, the handle and brackets guarantee product durability even in harsh environments.

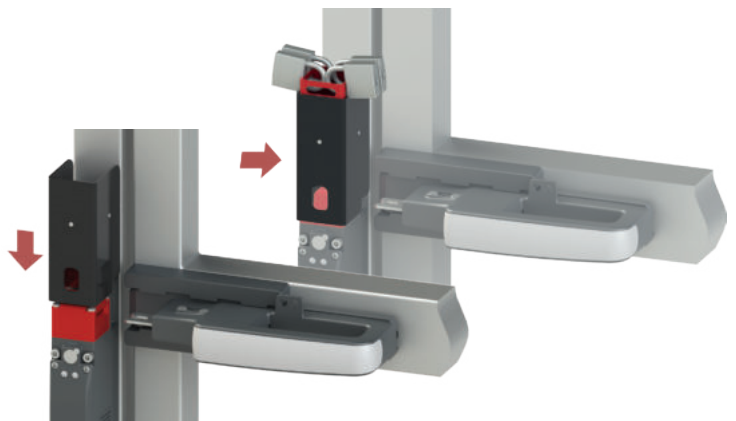
FLEXIBLE INSTALLATION

The P-KUBE Lite safety handle has a symmetrical design, offering an innovative solution for this segment of the market. This unique feature simplifies installation and makes the handle compatible with sliding or hinged doors opening left or right. The order code is the same regardless of the type of door and the installer is not required to adjust the configuration of the handle. The sleek design with no protruding parts not only optimises aesthetics but improves the safety and functionality of the handle.



LOCK-OUT DEVICE

An optional “lock-out device” can be fitted to the P-KUBE Lite handle on the switch support bracket. This device prevents accidental closure of the guard, simultaneously closing the centring hole and the slot for the switch actuator. The “lock-out device” is blocked by insertion of up to max. 9 padlocks in special slotted holes. The “lock-out device” can be released only after removing all of the padlocks, ensuring that the danger zone is clear before the guard can be closed. This accessory offers a greater level of safety than other solutions, as it prevents insertion of spare actuators into the switch.

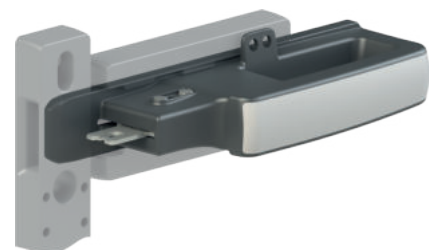




CENTRING

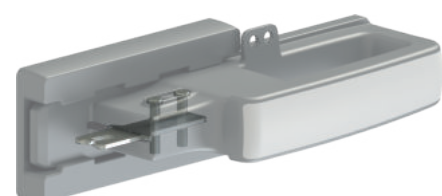
The new handle includes a strong centring pin on the front section, ensuring alignment of the actuator and switch.

This guarantees proper insertion and safe re-alignment of the guard to the frame, including in the event of misalignment.



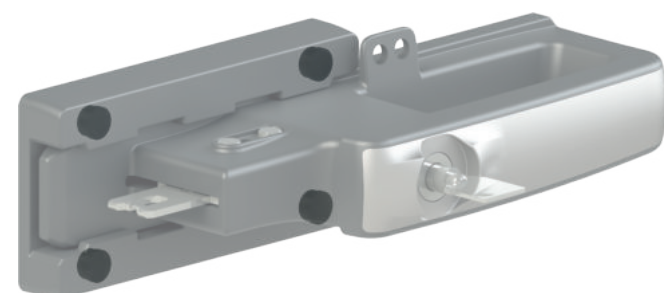
IMMOVABLE ACTUATOR

The P-KUBE Lite safety-handle actuator is fixed immovably to the handle body: This means that the installer is not required to assemble the actuator and it cannot be removed.



PROTECTION AGAINST TAMPERING

The P-KUBE Lite safety handle is supplied complete with snap-on protection caps to be applied to the holes of the fixing screws, so as to prevent access to them: therefore, standard screws can be used instead of tamper-proof screws, ensuring safety against tampering on the device. The caps also prevent the accumulation of soiling and facilitate the cleaning of the handle.



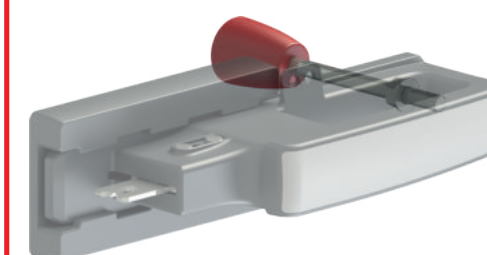
DEVICE FOR LOCKING THE HANDLE IN THE OPEN POSITION

Four holes on the handle body enable attachment of up to four padlocks to prevent accidental closure of the guard.



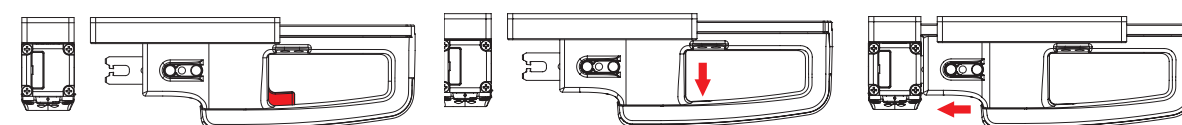
INTERNAL LEVER FOR EMERGENCY ESCAPE

The P-KUBE Lite safety handle can be equipped with an optional lever for emergency opening of the door from inside, guaranteeing quick and efficient exit of any personnel trapped inside.



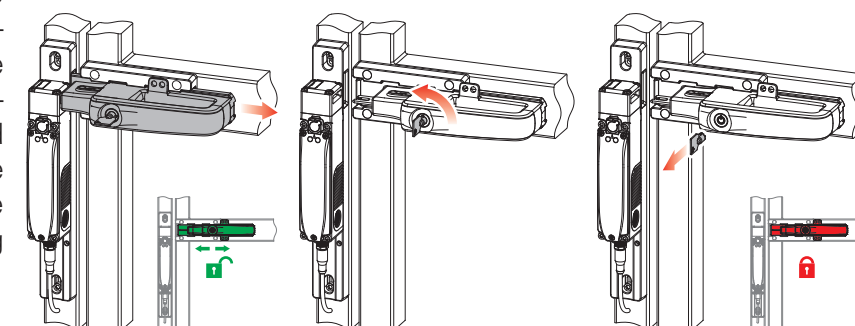
BLOCK BUTTON

The P-KUBE Lite safety handle can be equipped with a block button that is automatically activated to block the grip when the handle is in the open position. This option ensures that the handle remains securely in the open position, preventing accidental or undesired actions that could cause unwanted movement of the handle. The grip is released by simply pressing the block button. This simple and intuitive action allows the handle to return to its normal position, enabling movement and therefore insertion into the switch.



KEY LOCK

The P-KUBE Lite safety handle can be equipped with (coded) tubular or standard locking keys. The lock secures the handle in the fully open position, preventing any accidental or unwanted movement. Only with the handle in the open position can operators remove the key and take it with them during machine maintenance.





APPLICATION EXAMPLES



STANDARD HANDLE



**HANDLE WITH
TUBULAR-KEY LOCK**



**DOWNLOAD
BROCHURE**

Pizzato Elettrica s.r.l.
via Torino, 1 - 36063 Marostica (VI) Italy
Phone: +39 0424 470 930
E-mail: info@pizzato.com
Website: www.pizzato.com

Any information or application example, connection diagrams included, described in this document are to be intended as purely descriptive. The choice and application of the products in conformity with the standards, in order to avoid damage to persons or goods, is the user's responsibility. The drawings and data contained in this document are not binding and we reserve the right, in order to improve the quality of our products, to modify them at any time without prior notice. All rights to the contents of this publication are reserved in accordance with current legislation on the protection of intellectual property. The reproduction, publication, distribution and modification, total or partial, of all or part of the original material contained therein (including, but not limited to, texts, images, graphics), whether on paper or in electronic form, are expressly prohibited without written permission from Pizzato Elettrica Srl. All rights reserved. © 2023 Copyright Pizzato Elettrica.

ZE BRC24A23-ENG

