



INTELLIGENT
FEEDING COMPONENTS



4 times
the efficiency

IFC 4Q-Bowl Feeder



Maximum Flexibility

Bowl feeder are frequently used in automation technology where bulk material has to be automatically separated and infed in the correct orientation. With the additive manufacturing method, the HP Multi Jet Fusion (MJF) process, the bowl quality is at a comparable level with conventionally manufactured bowls.



At the same time, additional functions can be quickly integrated into the bowl feeder, such as pneumatic channels, flaps, sensor holders, feedback lines, slots and tabs. These elements can be manufactured in a single production step.

Particular properties and features

- Cost-effective
- High flexibility
- Reproducible
- 1 drive + base
- Customised baffles
- Exchangeable
- Multiple use
- Expandable for new models

Technical data

- Voltage: 230V
- Size Ø: 170, 250, 350, 450 mm
- Design: PA12
- Optional PU coating



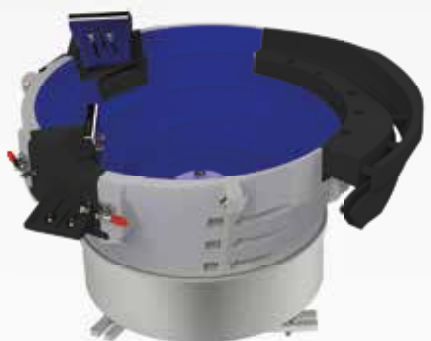
Ø 170 mm



Ø 250 mm



Ø 350 mm



Ø 450 mm



IFC INTELLIGENT FEEDING COMPONENTS GMBH
Paul-Böhringer-Str. 8 | D - 74229 Oedheim
Tel.: +49(0)7136/96395-0 | Fax: +49(0)7136/96395-9
info@ifc-online.com | www.ifc-online.com