

Timeline

FESTO Checkbox run-out:

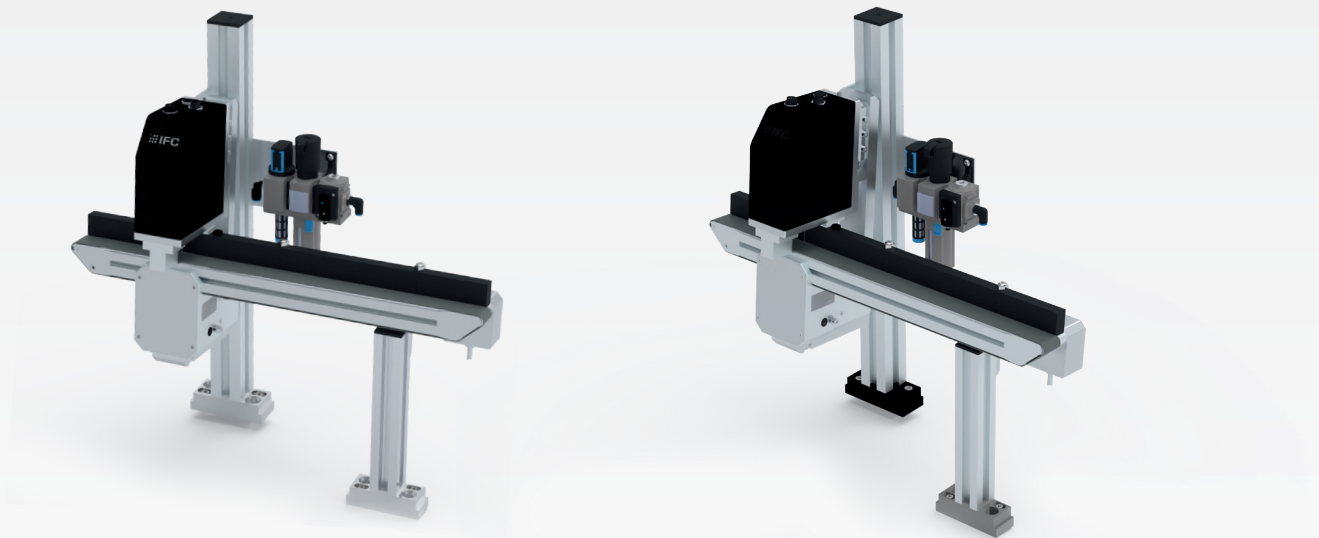
- Expiry date
(equipment deliverable until):
December 2025
- End of repair:
December 2028
- Spare parts available until:
December 2032

Start IFC-Checkbox®:

- Currently there are prototype systems in internal continuous testing for further development and Bugfixes
- First units in field testing with customers: 3rd quarter 2024
- October 2025:
Announcement of sales starting in 2025

Replacement for FESTO-Identbox

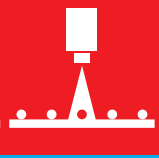
For this case, we already have adapted our modular IFC conveyor belt to the dimensions of the conveyor belt of the Festo-Identbox. We can therefore very simply replace the unit 1:1 (currently still in conjunction with the Checkbox-Compact) and particularly without major mechanical or electrical adaptations and conversions.



In the future, you will also be able to replace the FESTO-Identbox (with the matching modular IFC conveyor belts) based on the IFC-Checkbox®. If needed, due to space restrictions, we can provide you the optical unit in the housing adapted to the Identbox.



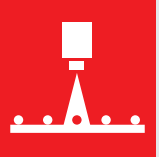
INTELLIGENT
FEEDING COMPONENTS



Replacement for
FESTO-Checkbox
family

IFC-Checkbox[®]





IFC-Checkbox®

Replacement for the FESTO-Checkbox

As you probably already know, FESTO will be stopping the “Checkbox Compact” product on 31/12/2025. We at IFC are currently developing a replacement device, the IFC-Checkbox®.

During implementation we are working exclusively on standard components and second source, in order to avoid dependencies on

suppliers and the associated supply chains. In addition we are completely open for the complete system for the future and we can only benefit from the constant developments and advances on the market (higher performance, cheaper prices).

Fig.: Current infeed system with the IFC-Checkbox®



The most important points summarised for you



Dimensions and installation:

- Fastening 1:1 with the dovetail adapter (like the Checkbox Compact)
- Possibly smaller construction height
- Approx. 7mm wider

Optical image scale:

- 1:1 like the Checkbox Compact

Test programs and teach-in:

- Scope and functions as before
- This means the existing test programs for the Checkbox-Compact N can be used 1:1

Test software:

- 1:1 as with the Checkbox software you know

Configuration software

- CheckKon and CheckOpti 1:1 as before
- Currently running on WIN 11 and following
- Downwards-compatible with the Checkbox-Compact N (with Ethernet interface)
This ensures that the configuration software can also be used in the future for these old devices

Electronics:

- No special electronics, usage of standard components
- Standard line scan camera (same sensor size and same resolution as before)
- Standard IPC
- Standard HDMI display

I/O interface:

- All previous I/Os are available in the functional range
- Precise design of the interface (plug) has not yet been finalised

Supply chain:

- Various suppliers: This enables planning and design possible with second source, to have alternative options of bypassing supply bottlenecks

Open system:

- So open to customised request, requirements and expansions in the future

