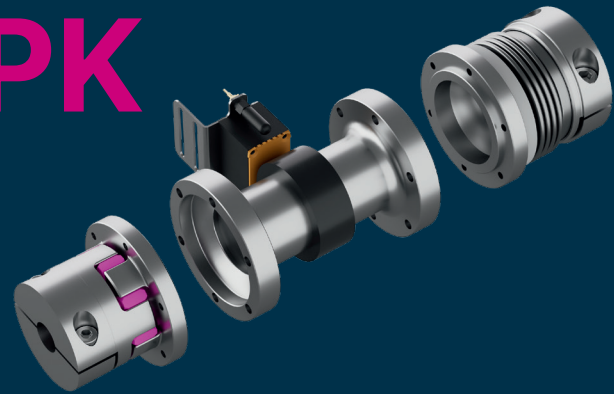


# iPK

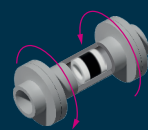


## SENSOR-INTEGRATED PRECISION COUPLING

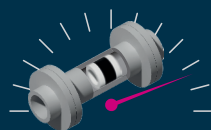
## R+W Sensor Technology experience the future today.

Smart and secure into the future. This is already possible. With the sensor-integrated coupling form R+W - our innovative answer to the modern requirements of digitalization, automation and the Industrial Internet of Things (IIoT).

The combination of torque measurement, torque transmission and offset compensation opens up new possibilities, thanks to its easy installation and simple wireless integration into the drive train. Whether for continuous measurements using induction voltage or for sporadic tests using a battery-powered version.



+ Torque

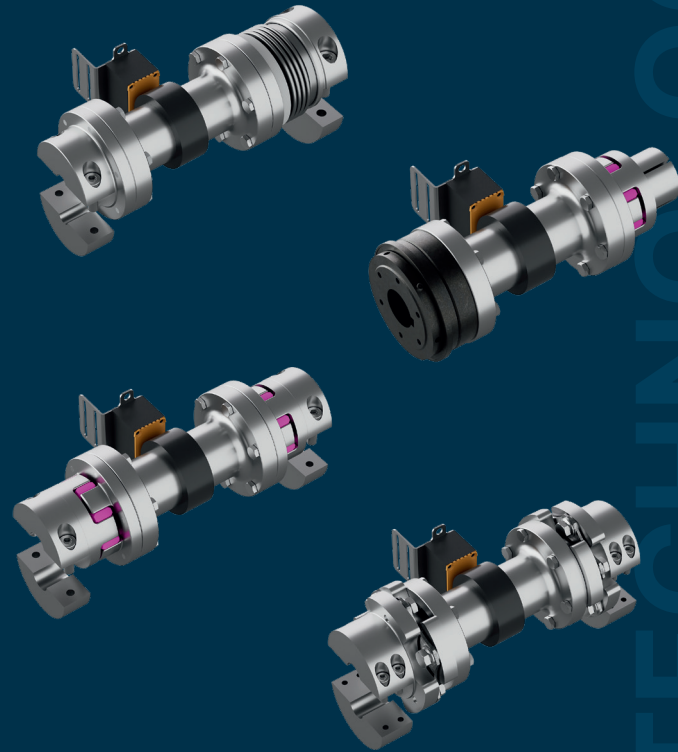


+ Speed

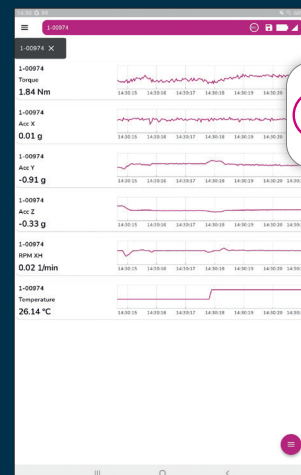


+ Temperature

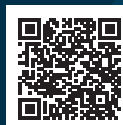
A few combinations



R+W Sensor App  
for mobile devices



Learn more  
about our  
sensor technology



THE COUPLING.

**R+W**  
A POPPE + POTTHOFF COMPANY

### Our product portfolio

- + Metal bellows couplings
- + Elastomer couplings
- + Safety couplings
- + Line shafts
- + Servo disc pack couplings
- + Gear couplings
- + Sensor technology
  - + Customized special solutions:
  - + Consultation
  - + Conception
  - + Engineering analysis
  - + Prototyping
  - + Manufacturing

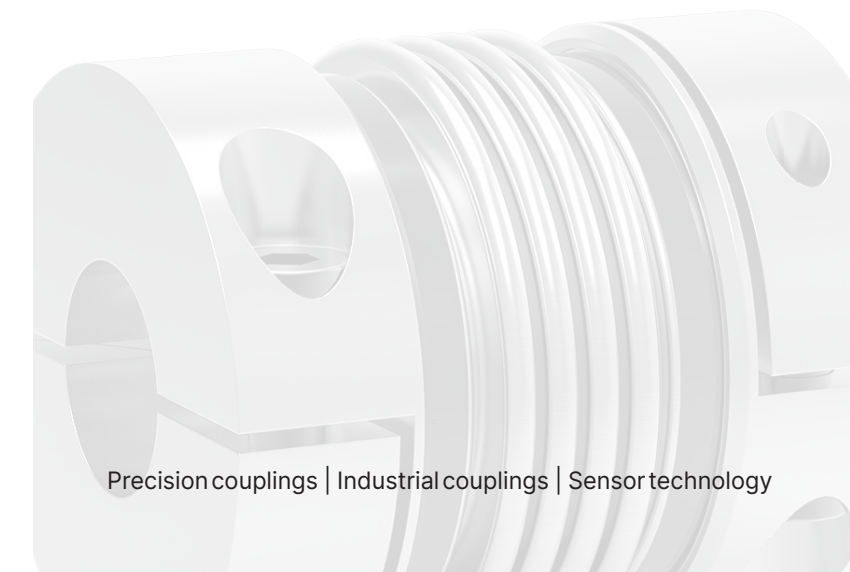
THE COUPLING.

**R+W**  
A POPPE + POTTHOFF COMPANY

### R+W ANTRIEBSELEMENTE GMBH

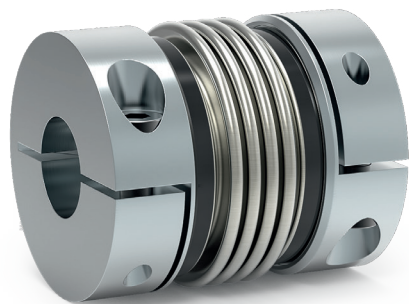
Hattsteinstr. 4  
63939 Wörth am Main  
Phone +49 9372 9864-0  
info@rw-kupplungen.de

[www.rw-couplings.com](http://www.rw-couplings.com)



Precision couplings | Industrial couplings | Sensor technology

# BK



## BELLOWS COUPLINGS

- from 0.05 to 10,000 Nm
- bore diameters from 1 to 180 mm
- zero backlash
- infinite life
- compact
- highly reliable

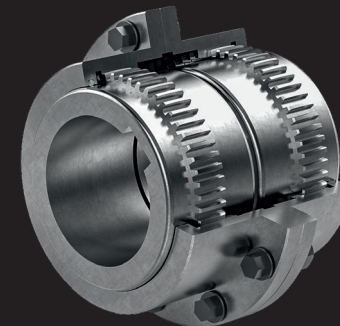
# SK



## SAFETY COUPLINGS

- from 0.1 to 2,800 Nm
- bore diameters from 3 to 100 mm
- precise torque overload protection
- zero backlash
- TÜV certified
- patented compact construction

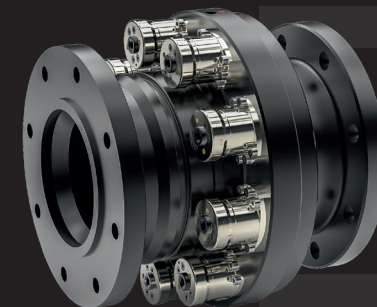
# BZ



## GEAR COUPLINGS

- from 1,900 to 2,080,000 Nm
- bore diameters from 12 to 510 mm
- low backlash
- special tooth geometry
- low maintenance
- high power density

# ST



## SAFETY COUPLINGS

- from 200 to 250,000 Nm
- bore diameters from 30 to 340 mm
- extremely compact
- robust
- full disengagement
- automatic re-engagement available

# EK



## ELASTOMER COUPLINGS

- from 0,5 to 25.000 Nm
- bore diameters from 3 to 170 mm
- backlash free
- vibration damping
- electrically isolating
- calibrated press fit

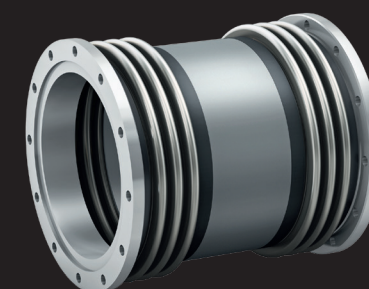
# SCL



## SERVO DISC PACK COUPLINGS

- from 25 to 100 Nm
- bore diameters from 15 to 40 mm
- high misalignment compensation
- corrosive and/or high temperature environments
- easy installation

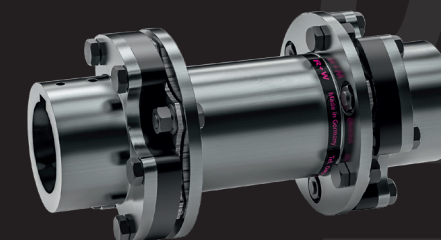
# BX



## BELLOWS COUPLINGS

- from 10,000 to 100,000 Nm
- bore diameters from 50 to 280 mm
- high torsional stiffness
- easy assembly & disassembly
- low restoring forces
- quiet, smooth running

# LP



## DISC PACK COUPLINGS

- from 350 to 50,000 Nm
- bore diameters from 18 to 170 mm
- high torsional stiffness
- available in various lengths
- backlash free
- API 610 / API 671