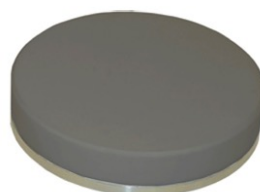


## Microwave Moisture Sensor Single Channel

with all-purpose installation possibilities



Exchangeable measuring head anthracite – for extreme working and high abrasion conditions



Exchangeable measuring head white - for installation in bins or onto dosing and conveying devices

### APPLICATION FIELDS

In several concrete based industries, foundry, ceramic, chemical, pharmaceutical, food and agriculture industries and many more

### CHARACTERISTICAL FEATURES

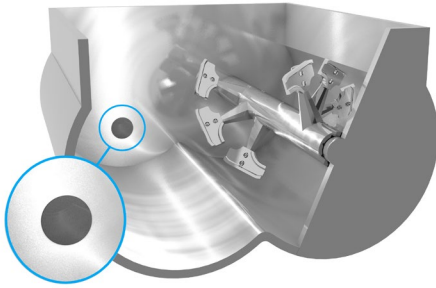
- ➔ Effortless changing of measuring head on-site
- ➔ High scanning speed to guarantee exact measurement
- ➔ High temperature stability (0-80°C)
- ➔ Deep penetrating measurement
- ➔ Smallest dimensions through latest electronic components
- ➔ Universal installation possibilities
- ➔ Probe type corresponds to ATEX 95 and corresponds to EG-Requirement no. 1935/2004 available (use in food production plants)

### TECHNICAL DATA

Power Supply	+ 24 V DC ( ± 25% )
Outputs (analog)	1 x 0-20 mA
Power Consumption	1,5 Watt
Frequency	433,92 MHz
Temperature Range	0-80° C
Cable Connection	5 x 0,25 mm <sup>2</sup> shielded (foil shield) L: 2 mtr., Miniature Round Connector, 5-pole, male
Dimensions	Ø: 75 mm; L: 100 mm;
Weight	1,8 kg;
Cover	Stainless Steel, IP 68

## Microwave Sensor installation possibilities with mixer applications

### INSTALLATION IN SIDE WALL OF A SHAFT MIXER



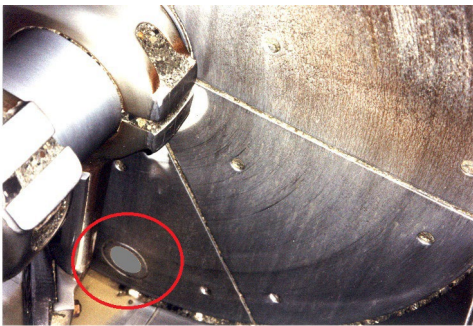
Wear Protection Tile  
Item-no.: E00013



### INSTALLATION IN MIXER FLOOR OF A PLANETARY MIXER



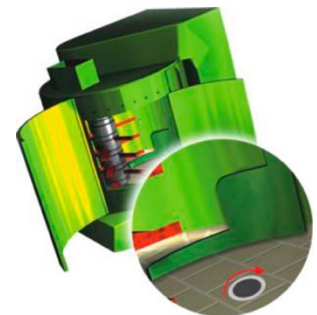
Clamp Connecting Box



### INSTALLATION IN MIXERS WITH ROTATING DRUM



Microwave Moisture and Temperature Measuring  
System FL-MOBIMIC-SlimLine for Wireless  
Measured Value Transmission



## Microwave Sensor installation possibilities with aggregate applications

### INTO AN AGGREGATE BIN



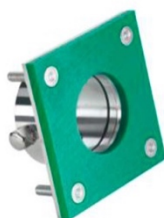
Wear Protection Tube  
Item-No. Z30362



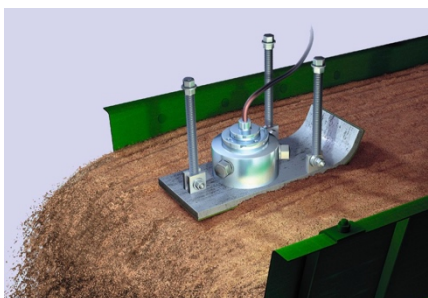
### UNDER THE SILO OUTLET



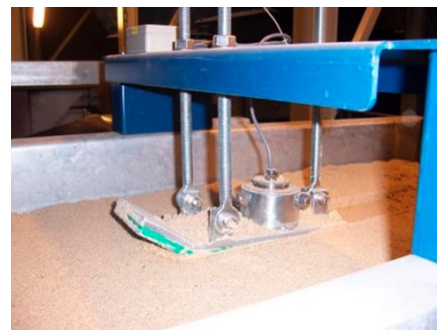
Non-Stick Wear Protection Tile  
Item-No. E00014



### CONVEYOR BELT OR VIBRATION CHUTE



Non-Stick Slide, Item-No. Z30145  
Installation Set for slide, Item-No. Z30112



Clamp Connecting Box