



**ScreenCoat-
Technology**

Sinter Plant Hot & Cold Sieves

Wear management solutions
for the **steel** industry



Pioneering Industrial Sustainability

www.castolin.com

www.eutectic.com

Sinter Plant

Hot & Cold Sieves

up to 800 °C

Screencoat is designed to maintain the dimensional stability of the sieve screen perforation. As wear particles are classified according to the sieve screen size, any losses of the perforation dimension will result in larger particles passing through the predetermined hole size reducing the efficiency of the sieve screen.

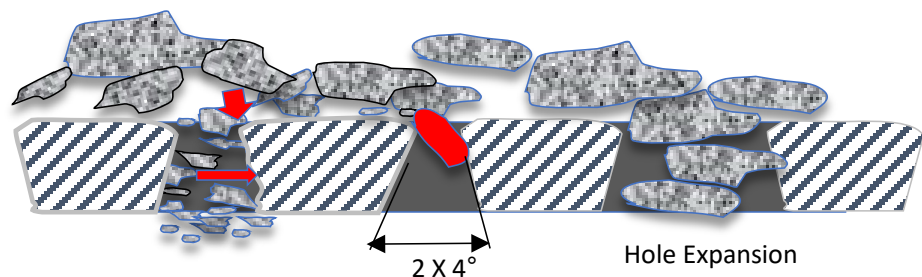
Castolin Eutectic's Screencoat sieve edge wear protection extends the useful life of the sieve screen and provides repetitive reliability of the granulometry of the sinter used in the blast furnace charge.

Castolin's Sieves are superior...

- ▶ Longer **lifetime** will **save you money** and hassle
- ▶ Improved **performance** will **optimize your output** (substantial savings!)
- ▶ Every sieve is **tailor-made** to your **requirements**
- ▶ **Any type** of sieve can be produced: hot sieve, cold sieve, hot chute of all shapes, forms and materials. In addition, we have a wide range of related products

...designed scientifically to push performance

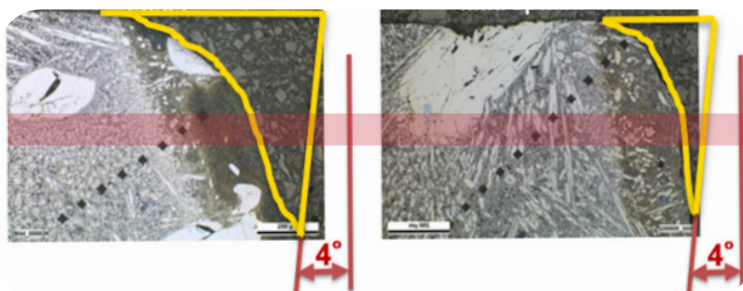
- ▶ We rely on scientific **research** & **years of experience** to continuously to optimize the design
- ▶ Holes in Castolin sieves are subject to less abrasion, which optimizes your production efficiency and constant output
- ▶ Our sieves avoid reduction in output efficiency over time



...using best materials and superior processes

- ▶ All **materials** & **production processes** are scientifically researched and **only the best** are used
- ▶ Our hardfacing and hole cutting processes ensure **minimal abrasion** over time
- ▶ Our proprietary screencoat technology has proven to **lengthen the lifetime** of sieves

Conventional solutions



Castolin solution

