

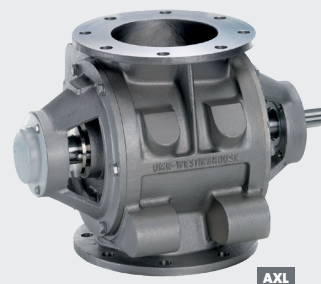
ROTARY VALVE - AXL/BXL DAIRY

Technical data standard configuration



GENERAL DATA

FLANGE CONNECTION	PN 10 or ANSI 150 lbs.			
MAXIMUM ALLOWABLE WORKING PRESSURE	up to 2 barg			
ALLOWABLE CONVEYING PRODUCT TEMPERATURE	up to 150°C			
USDA	The DMN AXL-BXL Dairy rotary valves are acceptable for use in dairy plants surveyed and approved for USDA grading services.			
ATEX 2014/34/EU	1D/2DG Equipment Protective system St.2 (10 bar P _{max}) Flameproof in both directions (If required please specify on order)			
SIZE AXL/BXL	200	150	300	350
SIZE BXXL			350	
CAPACITY LTR/REV.	5,5	10,5	19	34
* Capacity per revolution at 100% filling				
VENT HOLES IN HOUSING OPTIONAL	UNEF 1 1/8" thread with ferrule			
AIR PURGE CONNECTION IN END COVERS	G 1/4"-Ø10			



MATERIAL SPECIFICATIONS

CAST HOUSING/END COVERS	Stainless steel 316	DIN 1.4408
ROTOR FIXED 8 VANES	(Size 300-350 9 vanes)	
ROTOR FABRICATED	Stainless steel 316L	DIN 1.4404
POLISH	All internal (product contact) parts 0.8 µm (P150 grit)	
SHAFT SEAL	Glandpacking by means of lipseal - Air purge by means of lipseal Lipseal Viton white FDA approved material	
BEARING	Outrigged ball-bearing sealed for life	

DRIVE SPECIFICATIONS

* Minimum advised Torque [Nm] required.

SIZE AXL/BXL	200	150	300	350
SIZE BXXL			350	
50Hz	150	210	285	410
FREQUENCY CONTROLLED (10-60Hz)	205	285	385	555

Variations available on request For example: Easily detachable with supporting rails (Type MZC)