

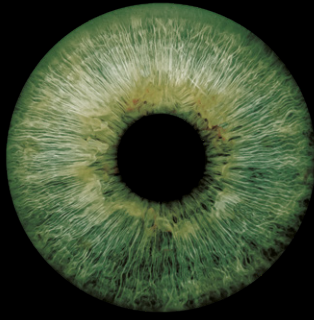


**HOSCH**<sup>iris</sup>



INTELLIGENT  
RESPONSIVE  
INFORMATION  
SYSTEM

**KEEP IT RUNNING**



# HOSCH **iris** DATA

## ► THE STRUGGLE IS REAL!

Keeping an overview of all assets and track of critical spare parts and service missions is a daily challenge. **HOSCHiris DATA** provides all critical information anytime, anywhere! Whether you are on-site or in the office, get an overview of service history and service planning. The **HOSCHiris DATA** app keeps track of spare parts and service missions around your scraper. Even without mobile network.



## ► BENEFITS

### Transparent service and inventory

- Receive digital service reports and access your asset data remotely

### Increase work safety

- Have all necessary data and emergency contacts available remotely and on-site

### Reduce management efforts

- Automated inspection scheduling, reporting and invoicing, spare part demand forecast



**HOSCH**

### Service report

---

Type: Maintenance (In Progress)

- **Created at:** 03-26-22
- **Operation**
- **/Location:** Test Operation NFC21
- **Plant/Area:** Test Plant NFC21
- **Conveyor:** NFC21
- **Position:** Test ConveyorNFC21\_LR\_0.20\_H
- **Device type:** B6-C
- **Device-ID:** 048466EA696680

Device detail:

Type	Article number	Changed
End-section	0544630	
Mounting	0551520	
Assembly carrier-Midsection	0541510	
Module / Blades / Blocks	SET0000045	1
Elements	0530279	9
Module / Blades / Blocks	SET0000056	5
Assembly carrier locking device	SET0551591	
Spindle	SET0000136	
Other / accessories / small parts	0562230	

Summary

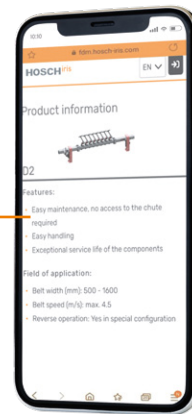
1. Maintenance Team
2. Maintenance Type
3. Conveyor Status - Prior Service
4. Scraper Status - Prior Service

## Device and service data management

Captures relevant information and provides access to advanced digital solutions. Increases transparency and work safety.

### ➤ AND THAT'S HOW EASY IT WORKS:

- Attach the **HOSCH**iris DATA tag at your asset
- The tag is scanned to inventorise the asset with details on plant, location, belt and scraper type
- Service staff will regularly scan the tag and update data on scraper type, condition, spare parts and other data
- All information is available at a glance even without mobile network



### ➤ SYSTEM FEATURES

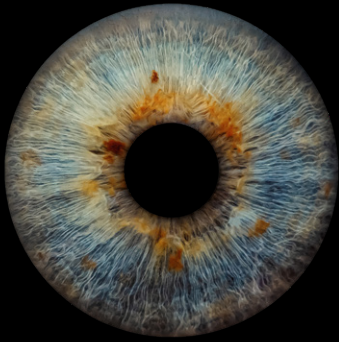
- Straight forward device inventory
- Digital capture via NFC and QR code
- Usable with mobile, tablet and PC
- Device data always at hand
  - Device configuration
  - Service history
  - Belt information
  - Spare part tracking
  - Work place emergency information

➤ **Collecting in-field data since 2019**

➤ **Applied in over 1,000 operations**

➤ **Information on 7,550 conveyor belts digitized**

➤ **Available worldwide**



# HOSCH **iris** DETECT

## ➤ NOBODY LIKES UNSCHEDULED DOWNTIME!

How about getting notified when an issue at your belt occurs? Even before an emergency shutdown is necessary? What if belt inspections are performed on demand instead of when scheduled? Dreams of the future? No: **HOSCH**iris DETECT the belt incident detector!



IP65  
IP67

## ➤ BENEFITS

### Reduce manual inspection efforts

- Be notified about potential incidents rather than inspect remote installations frequently

### Increase work safety

- Perform on-site inspections on demand, instead of matching schedules

### Increase uptime

- Be informed about potential issues before they cause breakdowns

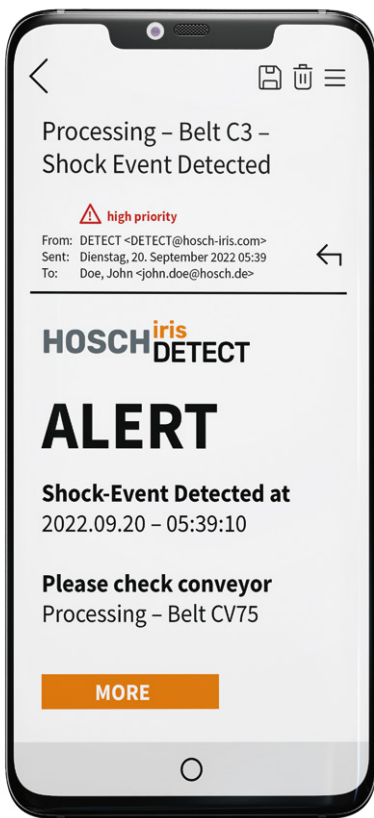


## Battery powered belt incident detector

Measures and reports belt damage in case defined limit value is exceeded. Enables higher asset availability and reduces personnel costs.

### ➤ AND THAT'S HOW EASY IT WORKS:

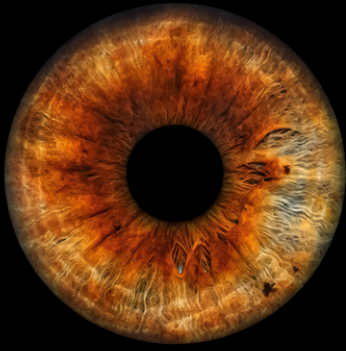
- **HOSCH**iris DETECT is installed on your scraper
- By regular measurement the limit values for common vibration are defined
- Relevant contacts for receiving notifications are defined
- If limit values are exceeded you will be notified automatically



### ➤ SYSTEM FEATURES

- Event based warning system right at the conveyor belt
- Easy installation and maintenance
- Automatic calibration and data -transmission (NB-IoT)
- Battery powered (lifetime 6-12 months)
- Energy-saving stand-by mode
- Regular norm measurement and threshold setting
- Usable with mobile, tablet and PC
- When individual limit values are exceeded:
  - Direct notification via e-mail
  - Detail measurement and data transmission for analysis of the incident

- Online in top 5 world iron ore operations
- Securing continuous belt operations since April 2022
- Operating in the toughest climates and environments
- Available worldwide



# HOSCH **iris** DISCOVER

## ➤ **PATENTED TECHNOLOGY FOR MORE CONTROL**

Take advantage of the privileged position of **HOSCH** scrapers right at the belt. **HOSCH**iris DISCOVER expands the HD-PU scraper line by adding sensors, cameras and data transmission for a continuous belt monitoring. This tailor made remote monitoring tool leverages asset specific and automatically processed data. Improve work safety and asset availability, now!



## ➤ **BENEFITS**

### **Reduce down-time and assure continuous production**

- Be informed about potential issues before they cause breakdowns or damages

### **Reduce risk for costly belt damages**

- Continuously monitor changes in belt surface and scraper behaviour

### **Increase work safety**

- Perform on-site inspections on demand instead of following schedules

### **Reduce labour input**

- Benefit from digital monitoring to reduce manual inspection efforts of your conveyor



## Continuous belt monitoring and data visualisation

Seamless belt monitoring and individual warning system with belt-specific, processed live-data. For increased asset availability and continuous production.

### ➤ FLAGSHIP PROJECT BRENNER TUNNEL

Under the Brenner Pass the longest underground railway tunnel of the world is being constructed. In the shallow tunnel construction, down-times of the main conveyor will cause an immediate stop of the tunnelling progress and generate enormous costs.

*"Thanks to **HOSCH**iris I do not need to worry about the belt, unless I receive an e-mail notification by the system. This gives me time to focus on production and helps to schedule belt maintenance efficiently."*

**Mattia Corna, Plant Manager, Brennero Tunnel Construction**



### ➤ SYSTEM FEATURES

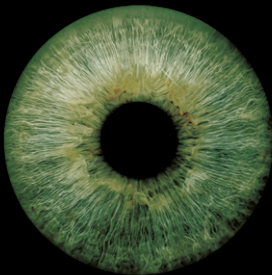
- Continuous belt monitoring and data visualisation
- Vibration resistant HD data
- Recording and transmission
- Video stream of belt operation
- Data storage on-site and in the cloud
- Online visualisation with live data in individual dashboards
- Signal history
- Individual configuration options
- Remote access from any device via web-browser
- Event notification and alerts via e-mail
- Support of the **HOSCH** expert team
- Reliable data can be used for further applications and analyses

- Online in Europe's largest tunnelling project
- Prevented 10.2 Mio.€ in belt damages in its first year
- 181 Mio. meter of belt scanned
- Continuous and high resolution data transmission
- Available worldwide

# KEEP IT RUNNING

## HOSCH<sup>iris</sup>

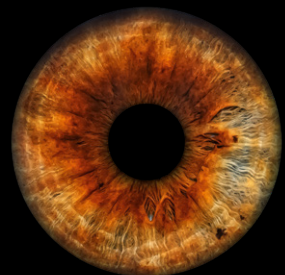
HOSCH<sup>iris</sup>  
DATA



HOSCH<sup>iris</sup>  
DETECT



HOSCH<sup>iris</sup>  
DISCOVER



HOSCH “iris” stands for “**i**ntelligent **r**esponsive **i**nformation **s**ystem”. Our digital products have proven to provide immediate operational value, being in use in over 1,000 plants and available in 24 countries. HOSCHiris will be your third eye, constantly monitoring your conveyor system, while gaining additional and new insights. According to the 360° approach, we connect equipment, users, technicians and HOSCH engineers. Central data is exchanged and made available digitally. Problems can be detected at an early stage, thus increasing plant availability.

Maintenance, operations and spare part management can be planned more efficiently.

Last but not least, HOSCHiris contributes to occupational safety, because a well-maintained system and conveyor belt issues detected at an early stage reduce both, personnel costs and safety risks.



**HOSCH** Fördertechnik Recklinghausen GmbH  
Am Stadion 36  
45659 Recklinghausen, Germany

T: +49 2361 58 98 0  
F: +49 2361 58 98 40

mail@hosch.de  
www.hosch-international.com