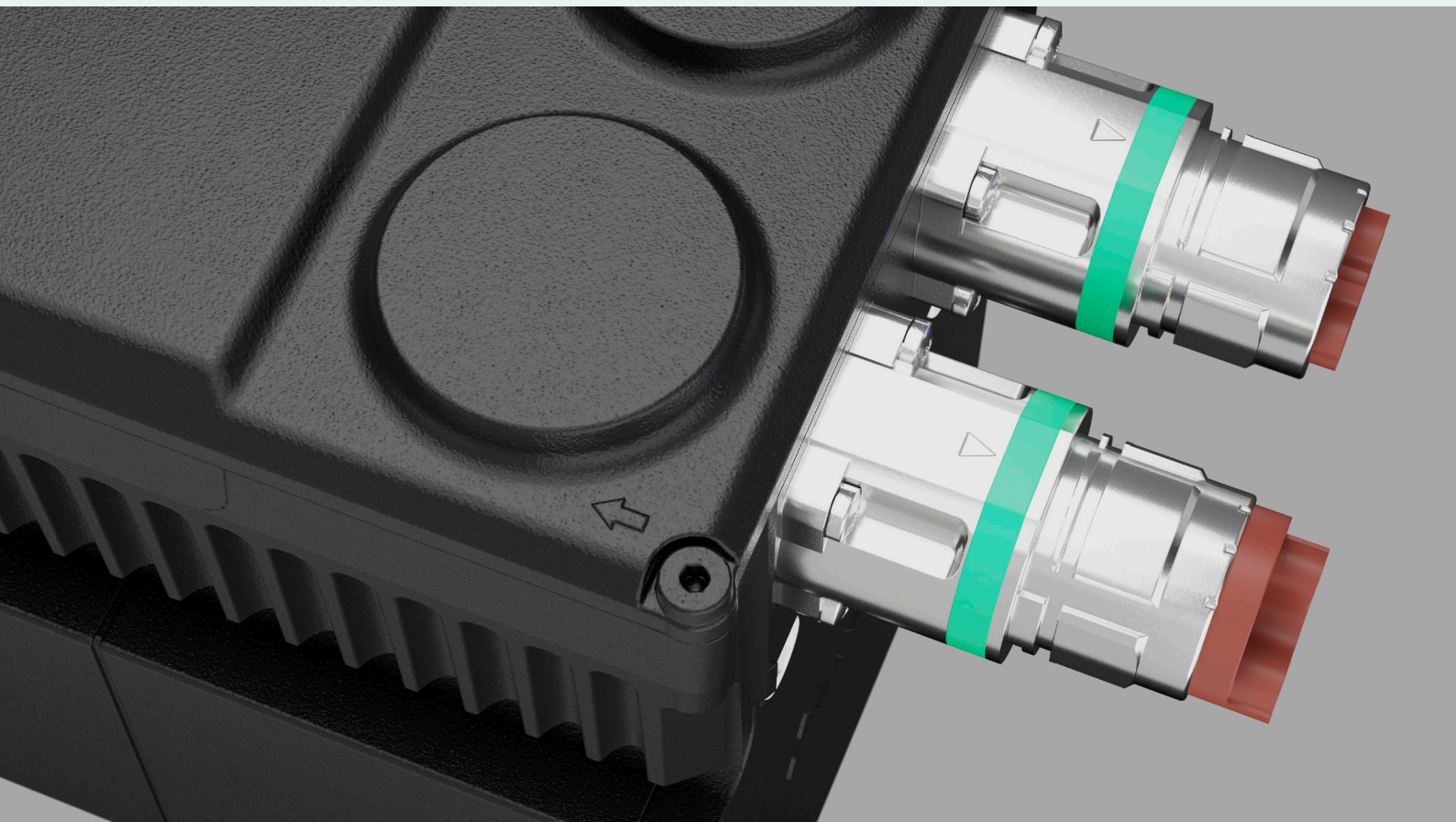


Decentralized drive technology

ihD-DT5

Synchronous servo motor with
integrated inverter



ihD-DT5

Synchronous servo motor with integrated inverter



Two in one

In the ihD-DT5 motor-integrated version, the ihD is installed directly on the motor. All power and signal lines are routed internally. No external cabling is required between the controller and motor. This is why only minimal cabling is needed for the synchronous servo motor with integrated inverter.

Simply in series

The user can wire several servo inverters together based on the daisy chain concept. Here, the DC bus, STO, 24V and fieldbus are applied to the ihD via a single cable and forwarded to other decentralized drives by way of a daisy chain set-up.

STO "Safe Torque Off"

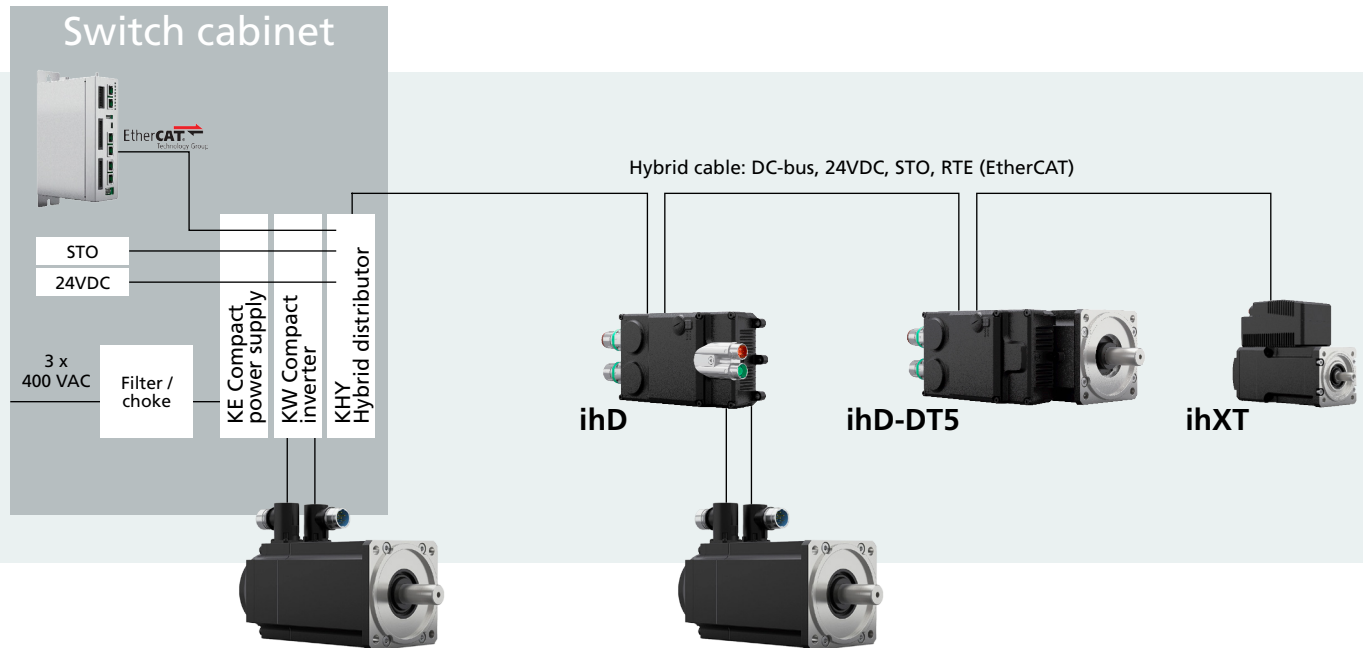
The devices are integrated in an STO circuit via the hybrid cable as standard. Optionally, devices are available in which the STO connection is implemented separately from the hybrid cable via M12 plugs – the "Selective STO" option.



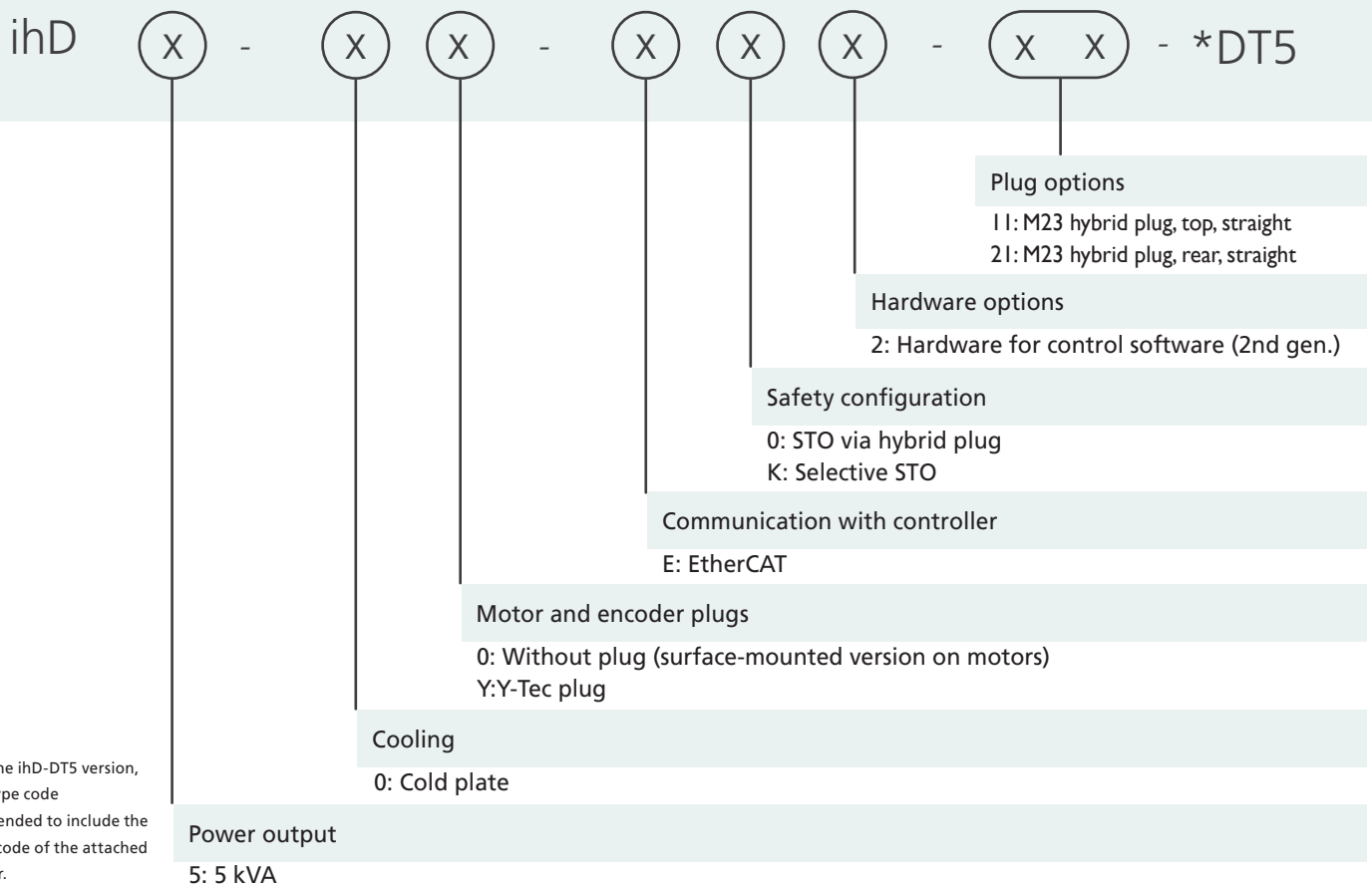
Reduced complexity

The looping through of the power supply and communication lines is reduced to a single cable, thereby minimizing the amount of cabling required – even in the case of complex machines. The synchronous servo motor with integrated inverter ihD-DT5 is ideal for modular machine and system construction.

System structure



Type code ihD – DT5



Technical data

| Motor type | ihD5-DT5-3-10-xxO | ihD5-DT5-5-10-xxO | ihD5-DT5-7-10-xxO | ihD5-DT5-9-10-xxO |
|---|-------------------|-------------------|-------------------|-------------------|
| Flange size [mm] | 100 mm | | | |
| Maximum torque [Nm] | 11.1 | 18 | 26.6 | 28.4 |
| Maximum current [Arms] | 20 | 22 | 22 | 22 |
| Continuous stall torque [Nm] | 2.3 | 4.2 | 6.2 | 7.3 |
| Continuous stall current [Arms] | 2.4 | 3.8 | 4.1 | 5 |
| Rated torque [Nm] | 1.67 | 2.1 | 4.2 | 2.3 |
| Rated current [Arms] | 1.8 | 2 | 2.9 | 1.7 |
| Rated speed [rpm] | 3500 | 3500 | 2000 | 3000 |
| Rated power [W] | 600 | 760 | 870 | 710 |
| Moment of inertia (without brake) kgcm ² | 1.6 | 2.9 | 4.2 | 5.5 |
| Motor length [mm] | 163.5 | 198 | 221 | 258 |
| Motor length with brake [mm] | 191.5 | 226 | 232.5 | 286 |
| Weight without brake [kg] | 4.5 | 5.7 | 7 | 8.3 |

AMKmotion GmbH + Co KG

Gaußstraße 37-39
D-73230 Kirchheim unter Teck
Germany
Phone +49 7021 5005-0
info@amk-motion.com
www.amk-motion.com

The information in this brochure is intended solely as the description of a product range. Deviations are possible due to the specific nature of the products and ongoing further developments. Before using data for calculations or designs, please check the latest status in advance and request product-specific dimensions and datasheets.

Rights reserved to make technical changes!

V2025/14_250513