



# PRODUCT PORTFOLIO

COUPLING TECHNOLOGY, TRANSMISSION & GEARING TECHNOLOGY

# ABOUT US



Our **central areas** are **shaft couplings** with **highest precision** and a wide range of applications. Encoder accessories, measuring wheels, gear parts, bevel gears and clamping flanges complete our product portfolio.

ABP Antriebstechnik is a global player but maintained strong local roots in the region of St. Georgen.

True to the motto **Think Global- Act Local** we have built up a reliable network of suppliers. This enables us to offer our customers **short delivery times**, **fast service** and **customised products**.

Together with our engineers, we develop and manufacture a wide range of **customer-specific solutions** in small and medium series.

From planning and design to your serial production, we offer individual support - with the highest demands on quality and service.

# ABOUT US

ABP Antriebstechnik GmbH was founded in 1999 by Wilhelm Ploetz and Bernd Bäuerle in St. Georgen in the Black Forest. Today, the company is family-managed and represented by Barbara Ploetz as managing partner

We are located in the Technology Center in St. Georgen, have over 25 employees and a very wide international customer base.

Over the last years the product range has been continuously developed and expanded.





# COUPLINGS

ABP Antriebstechnik offers a wide range of different shaft couplings.

From Bellows Couplings, ideal for precise transmission of rotary motion, to Helix Couplings, which are a perfect connecting element between motor and threaded spindle, up to the compact design of the Spring Disc Coupling, we have a comprehensive range of accessories for encoders or servo step motors!

## BELLOWS COUPLINGS



Screw or clamp version  
Torque: 0,15 Nm to 10 Nm  
New in stainless steel A4 1.4404

## NICKEL BELLOWS COUPLING



Screw or clamp version  
Torque: 13 Ncm to 200 Ncm

## HELIX COUPLINGS



Screw or clamp version  
Torque : 2 Ncm to 200 Ncm  
New in stainless steel A4 1.4404

## HEAVY DUTY HELIX COUPLINGS



Screw or clamp version  
Torque : 0,4 Nm to 22 Nm  
New in stainless steel A4 1.4404

## SPRING DISC COUPLINGS



Screw or clamp version  
Torque: 40 Ncm to 400 Ncm

## SPRING COUPLINGS



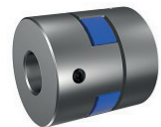
Screw version  
Torque: 15 Ncm to 150 Ncm

## DOUBLE LOOP COUPLINGS



Screw version  
Torque : 0,5 Nm to 5 Nm  
available in stainless steel A4 1.4404  
or fda compliant

## JAW COUPLINGS



Screw or clamp version  
Torque : 8 Nm to 25 Nm  
New in stainless steel A4 1.4404

## CROSS SLOTTED COUPLINGS



Screw or clamp version  
Torque : 20 Ncm to 80 Ncm  
New in stainless steel A4 1.4404

## FRICTION COUPLINGS



Screw or clamp version  
Torque: 30 Ncm to 120 Ncm

# INDUSTRIES



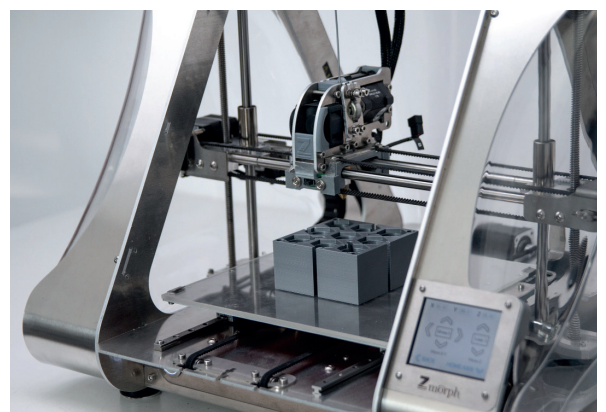
Jaw couplings are used for example in commissioning systems, in this case in the medical sector.

Gearing parts such as worms and worm wheels are deployed in modern agricultural sector, in the mechanical field as well as in the optical industry.



Precise bevel gears and appropriate couplings are used in the food industry.

A further application for precise and sensible bellows couplings is in the use in 3D printers.



# MEASURING WHEELS & ENCODER ACCESSORIES

## MEASURING WHEELS

Aluminium measuring wheels for **precise length measurement** of various materials, available with different surfaces (cross-knurled, smooth, studded, corrugated) **very good concentricity** and **highest measuring accuracy**, reduced mass due to optimized design.

High resistance to oils, fuels, ozone and weather influences as well as optimum wear values under high mechanical stress.

Circumference: from 200 mm to 500 mm  
**Available in inch sizes and various widths.**



## MOUNTING BRACKET SPRING LOADED

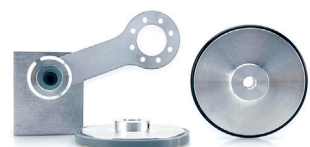
High quality manufactured spring mounting bracket for encoder mounting in combination with a measuring wheel of 12 inch or 500 mm circumference, different mounting holes allow the **optimal positioning of the encoder**. The precisely tuned suspension guarantees a permanent pressure of the measuring wheel on the object.

## SPRING LOADED ARM DAAF 60120

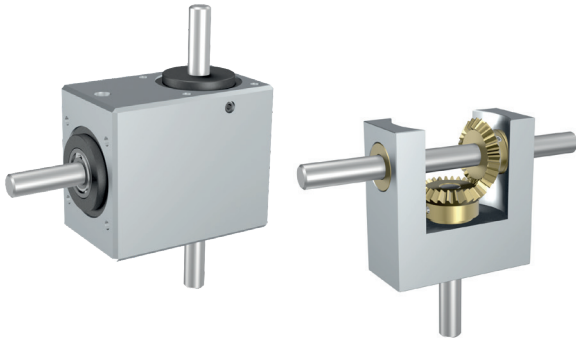
The Spring Loaded Arm is optimally suited to ensure **precise and reliable length measurement** in combination with a Measuring Wheel and encoder at a **higher spring travel**. The 6 mounting holes, each 60° offset on a pitch circle of 48 mm, ensure optimum alignment and mounting of the encoder.

The Spring Arm can be mounted from both sides, so the direction of the spring load can be changed. The preload and the resulting contact pressure are individual adjustable through the clamp fastening.

Other versions, e.g. the DAAF 3666 26 as a low-cost solution in a set, are also available in our portfolio.



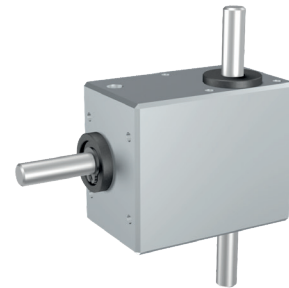
# GEARING PARTS & GEARBOXES



## BEVEL GEARBOXES

Closed or open design  
Various transmissions

Torque: 35 Ncm to 250 Ncm



## WORM GEARBOXES

Closed design  
Various transmissions

Torque: max. 80 Ncm



## GEARING COMPONENTS

Bevel gears, worms, worm gears as well as spur gears and hollow gears are available in sizes from module 0.2 mm to module 2 mm.

Special designs in various materials are available.

The appropriate product is not listed? Please contact us, we will be pleased to provide you with advice and will find the ideal solution for your application.

**ABP ANTRIEBSTECHNIK GMBH**

Leopoldstraße 1  
78112 St. Georgen  
Germany  
Tel. +49(0)7724 58008-0  
Fax +49(0)7724 58008-01  
E-Mail: [info@abp-antrieb.de](mailto:info@abp-antrieb.de)  
Internet: [www.abp-antrieb.de](http://www.abp-antrieb.de)