

GEARS & GEARING PARTS

COUPLINGS, GEAR & GEARING TECHNOLOGY

ABOUT US



Our central areas are **shaft couplings** with highest precision and quality. **Gear parts, Encoder accessories, measuring wheels, bevel gears and clamping flanges** complete our product portfolio.

ABP Antriebsstechnik is a global player but maintained strong local roots in the region of St. Georgen.

True to the motto **Think Global- Act Local** we have built up a reliable network of suppliers. This enables us to offer our customers short delivery times, fast service and customised products.

Together with our engineers, we develop and **manufacture** a wide range of **customer-specific solutions** in small and medium series.

From planning and design to our serial production, we offer competent and personal support.

ABP-GEARBOXES



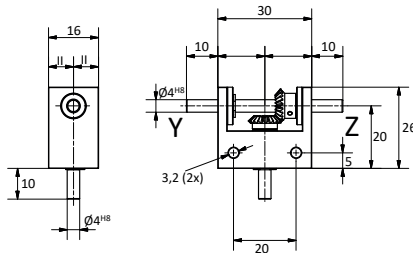
ABP Antriebstechnik GmbH is an experienced producer and developer of precision mechanical gearboxes in small and medium dimensions.

High-quality materials, precision, smooth running and power density guarantee a long service life.

Our product range in the gearbox sector covers open and closed bevel gearboxes, worm gears, spur gears and planetary gears, smallest differential gears as well as customer-oriented special solutions.

OPEN DESIGN

WG XO 3026

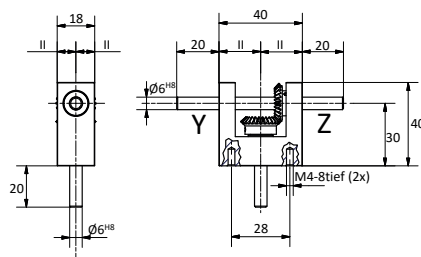


WG XO 3026/ WG XOA 3026

Open angle gear with 1:1 or 1:2 ratio, available with sintered or ball bearings, bearing bracket made of anodised aluminium, shafts and gears made of steel.

Torque max. 60Ncm.

WG XO 4040

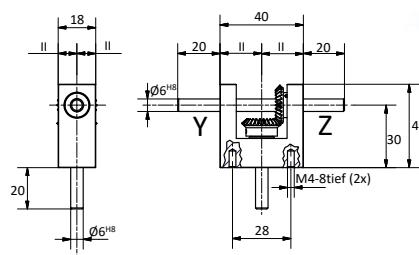


WG XO 4040

Open angle gear in 1:1; 2:1 or 1:2 ratio, bearing angle and shafts made of stainless steel.

Torque 70Ncm / 100Ncm.

WG MO 4040



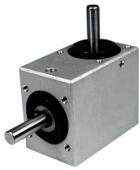
WG MO 4040

Open angular gear in 1:1; 2:1 or 1:2 ratio, zinc die-cast bearing bracket, brass gear wheels.

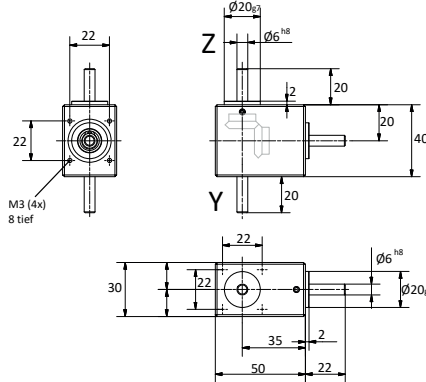
Torque 35Ncm/ 60Ncm.

ABP-GEARBOXES

CLOSED DESIGN



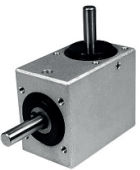
WGKG 4050



WGKG 4050

Closed angular gear in 1:1; 2:1 or 1:2 ratio with minimised gear backlash. Housing made of anodised aluminium, stainless steel shafts and brass gears.

Torque 35Ncm / 60Ncm

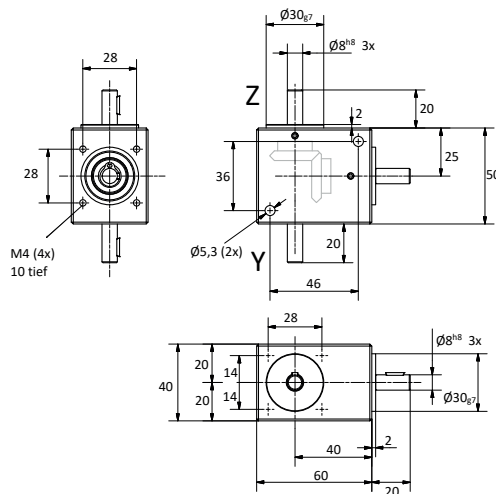
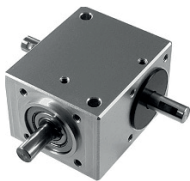


WGKGX4050

Closed angular gear in 1:1; 2:1; 1:2 or 3:1 ratio with minimised gear backlash. Housing made of anodised aluminium, shafts and gears in stainless steel.

Torque 50Ncm / 70Ncm / 100Ncm

WGKG 5060

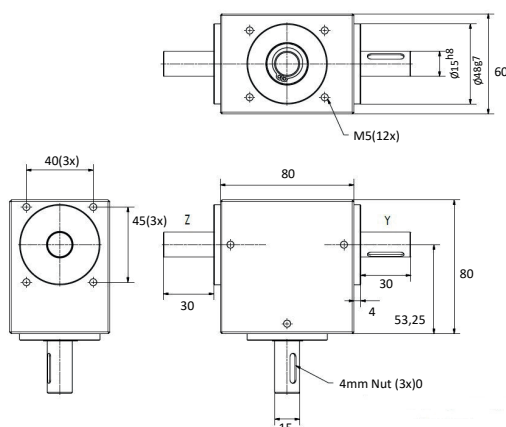
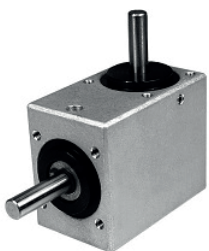


WGKG 5060

Closed angular gear in 1:1 or 2:1 ratio with minimised gear backlash. Housing made of anodised aluminium, shafts and gears in stainless steel.

Torque 1,5Nm / 6Nm

WGKG 8080



WGKG 8080

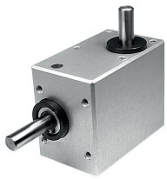
Closed angle gearbox.

Anodised aluminium housing, stainless steel shafts and hardened stainless steel gears.

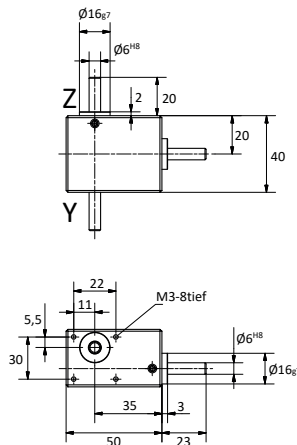
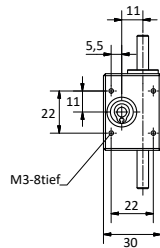
Torque 15Nm

ABP-GEARBOXES

WORM GEARBOXES



SGSG 4050



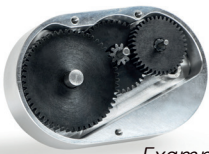
SGSG 4050

Closed self-locking worm gear available in three reduction ratios with ball bearings.

Housing made of anodised aluminium, stainless steel shafts, right-hand worm made of case-hardened steel, worm wheel in bronze.

Torque 80 Ncm

SPUR GEARBOXES



Example

Advantages of a spur gear:

High efficiency, large gear ratios possible, can be expanded as required with additional stages, can be combined with worm drives.

PLANETARY GEARBOX



Example

Advantages of a planetary gear:

Very large gear ratios possible, high torques, low space requirement, multi-stage expandable.

Customized solutions

Customised gearbox solutions are one of our core competencies.

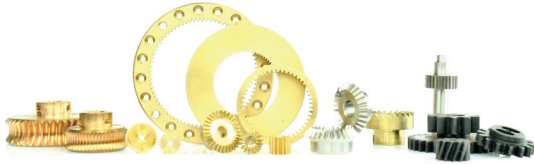
Thanks to our modular system and the expertise of our engineers, we can develop, design and manufacture customised solutions such as bevel, helical and other gearboxes according to your specific requirements. ABP gearboxes are engineered for industrial applications with very high transmission accuracy and extreme durability.

From the early design stage, we work closely with you to find or develop the optimum gearbox with the exact design you need.

But we can do even more! Our depth of manufacturing enables us to provide a time-saving and cost-effective solution for your application. Would you like further information? Feel free to contact us! We're looking forward to work with you and make your project a success.

We are available on **+49 7724 580080** or by e-mail at **anfrage@abp-antrieb.de**

ABP-GEARING PARTS



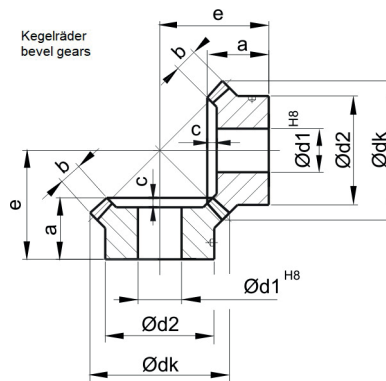
In addition to our standard gearing parts, we can provide you with many other customised gearing solutions.

Practical experience, a close exchange with our customers and innovative developments guarantee smooth use and a long service life of our products in your applications.

Bevel gears

The bevel gears are supplied in pairs, axle angle at 90°.

Available in 1.4305 stainless steel (X) or in brass (M), all standard pairs can be found on our website www.abp-antrieb.de. On customer request we design and produce bevel gears in special design up to module 1.5.



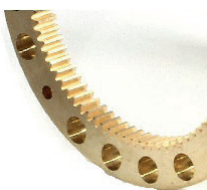
Spur gears

We manufacture spur gears in a wide range of designs, also according to your application. Available with straight or helical teeth from module 0.2 to module 1.5. Manufacturing from all machinable materials and a max. outer diameter of 120mm is possible.

Internal gears

At ABP Antriebstechnik you can obtain straight-toothed internal gears from module 0.3 to module 1.0.

Materials on request.



ABP-GEARING PARTS

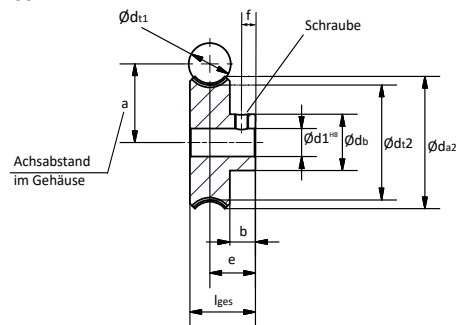
Worm wheel

Bronze worm wheels.



SRBS

Schneckenrad/worm wheel



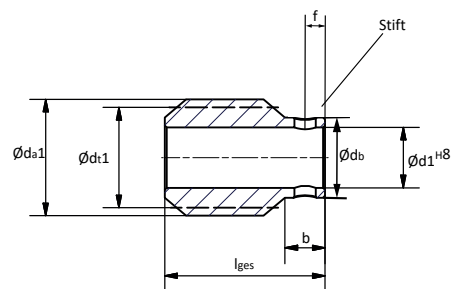
Worm

Our worms are single-start, right-hand pitch made of 9SMnPb and case hardened.

For further transmission ratios, please contact us.

SNSG

Schnecke/worm



	worm wheel	m	z	Ød12	Øda2	Ød1	a	e	lges	b	f	Ødb	worm	m	Ød11	Øda1	lges	b	Ød1	f
SRSN M03	SRBS 0050 03/115	0,3	50	15	17,2	6	10,5	8,5	11,5	5,5	2,5	12	SNSG 0301 066	0,3	6	6,6	12	3,5	2	1,8
SRSN M04	SRBS 0050 04/135	0,4	50	20	22,9	8	14	9,5	13,5	5,5	3,5	13,5	SNSG 0401 088	0,4	8	8,8	12	3,5	3	1,8
SRSN M05	SRBS 0050 05/140	0,5	50	25	28,2	8,5	16,75	9,75	14	5,5	3	12	SNSG 0501 095	0,5	8,5	9,5	14	4	4	2
SRSN M06	SRBS 0050 06/155	0,6	50	30	33,8	10	20	10,5	15,5	5,5	2,5	12	SNSG 0601 112	0,6	10	11,2	16	4	6	2
SRSN M08	SRBS 0050 08/155	0,8	50	40	44,1	10	25	10,5	15,5	5,5	2,5	12	SNSG 0801 116	0,8	10	11,6	18	5	5	2,5

explanation

m=	module	standard helix angle 14°	Ød ₁ , Ød ₂ =	bore Ø	
z ₁ , z ₂ =	number of teeth on worm wheel	l ₁ , l ₂ =	total length	d _{t1} , d _{t2} =	pitch circle Ø gear wheel
i=	ratio	a=	centre distance in the housing	d _{a1} , d _{a2} =	tip circle Ø
pressure angle 20°		b=	shoulder length	d _b =	Ø approach

Customised offers

Individual packaging, laser labelling and customisation can be implemented quickly and reliably through in-house production. We will be pleased to put together a suitable offer for you.

Please do not hesitate to contact us for other custom sizes, special requirements or just if you have any other questions.

We are available on **+49 7724 580080** or by e-mail at **anfrage@abp-antrieb.de**!



ABP ANTRIEBSTECHNIK GMBH

Leopoldstrasse 1
78112 St. Georgen
Germany

Tel. +49 (0) 7724 58008-0

Fax +49 (0) 7724 58008-01

E-Mail: info@abp-antrieb.de

Internet: www.abp-antrieb.de