



# GESSbot<sup>®</sup>

Value added by  
autonomous logistics.



The logo for the Gb350 robot, featuring a stylized 'Gb' in red and blue, followed by '350' in grey.

# Gb350

Versatile

Intelligent

Autonomous

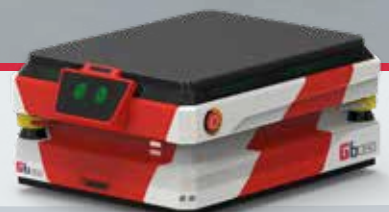
The Gb350 is an Automated Mobile Robot (AMR) for quick and cost-efficient automation of your internal transport processes.

No expensive extras and auxiliary systems, such as magnetic tracks, induction loops, or additional safety systems, are required. The AMR effortlessly integrates into your existing production and logistical structures.

The GESSbot logo, with 'GESS' in red and 'bot' in blue.

## GESSbot

[www.gessmann.com](http://www.gessmann.com)





# Gb350

## Technical data

Maximum payload: 350 kg

Weight: 150 kg

Maximum payload incline: 5 %

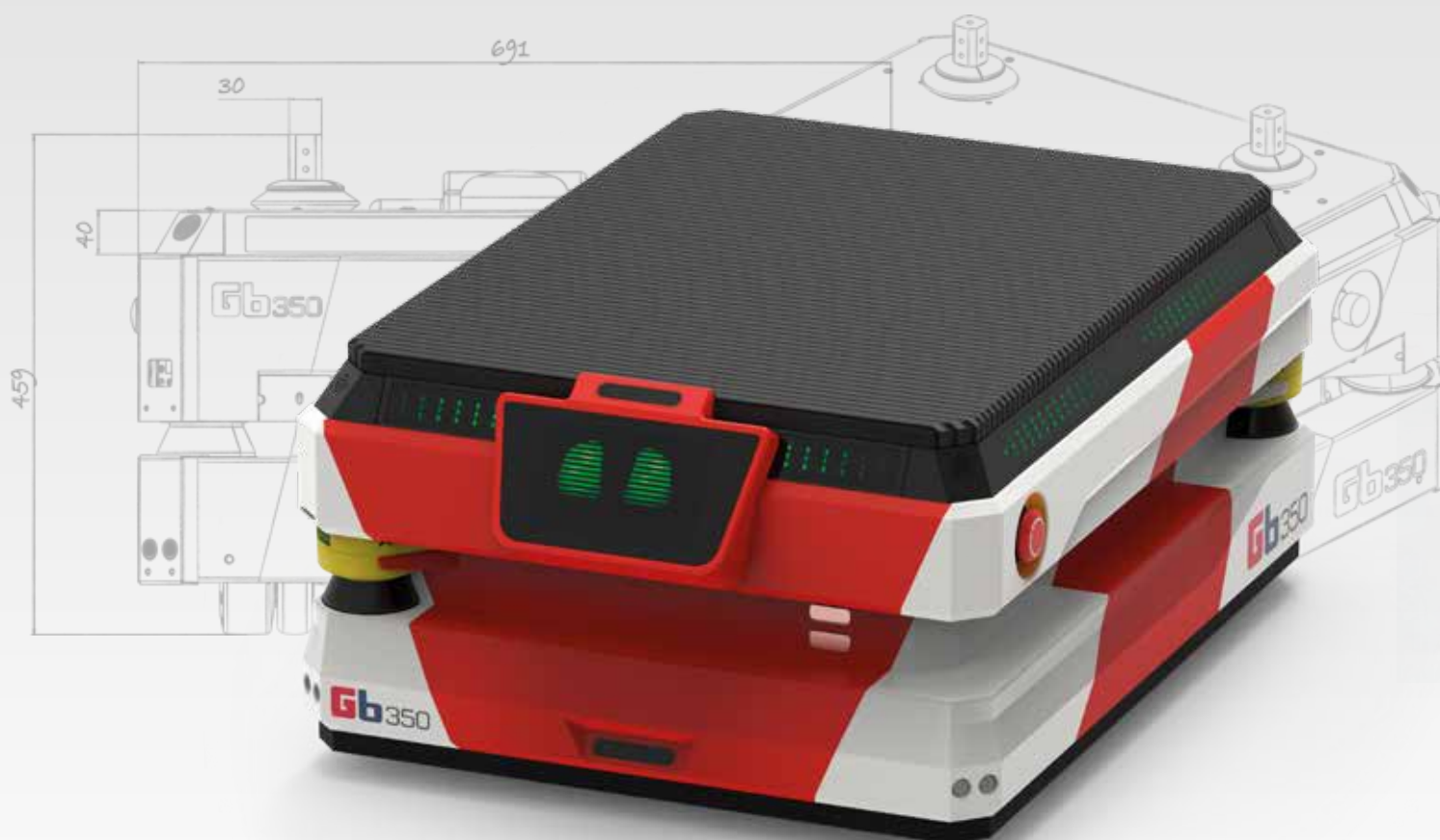
Dimensions [LxWxH]: 950 x 718 x 420 mm

Maximum speed: 1,2 m/s [4,3km/h]

Permissible environmental temperature: 5 °C to 50 °C

Battery life: up to 12 h

Working range of navigation sensors: 0-20 m



**GESSbot**

[www.gessmann.com](http://www.gessmann.com)

# Fully automated charging



The Ls25 charging station and the GESSbot Gb350 are the perfect team. No inconvenient manual plugging in at the end of the day and no interruptions due to empty battery. The Gb350 automatically finds its own way to the charging station, plugs in and charges. Even if the battery life of up to 12 hours is not enough for a normal working day, there is still the possibility to recharge during breaks. Additional charging stations Ls25 can also be easily integrated into loading and unloading stations, so that it is possible to be re-charged during ongoing work. This ensures that the Gb350 is reliably powered throughout every shift, thanks to its dependable battery and convenient charging capabilities.

---



Four integrated load cells ensure reliable loading and safe distribution. Overload and incorrect loading can therefore be detected quickly and reliably, before damage or unsafe operations occurs. Partial loading and remaining load capacity data can be used by the fleet control system to optimise the allocation of orders ensuring that empty drives can be avoided and efficiency is maximised.

---



# NAVIGATION

The GESSbot Gb350 navigates effortlessly in almost any environment, thanks to modern sensor technology. The latest generation of LIDAR sensors maps the surrounding environment, detects obstacles, and registers changes.

These are entered into the internally generated map and communicated wirelessly to the rest of the fleet. The 3D camera system prevents collisions with overlapping obstacles or encroaching into other lanes.

Equipped in this way, the Gb350 follows every route, drives to stations and charging stations and independently avoids obstacles. Even the use of elevators is possible using the optional elevator control.







[www.gessmann.com](http://www.gessmann.com)

# FLEET MANAGEMENT

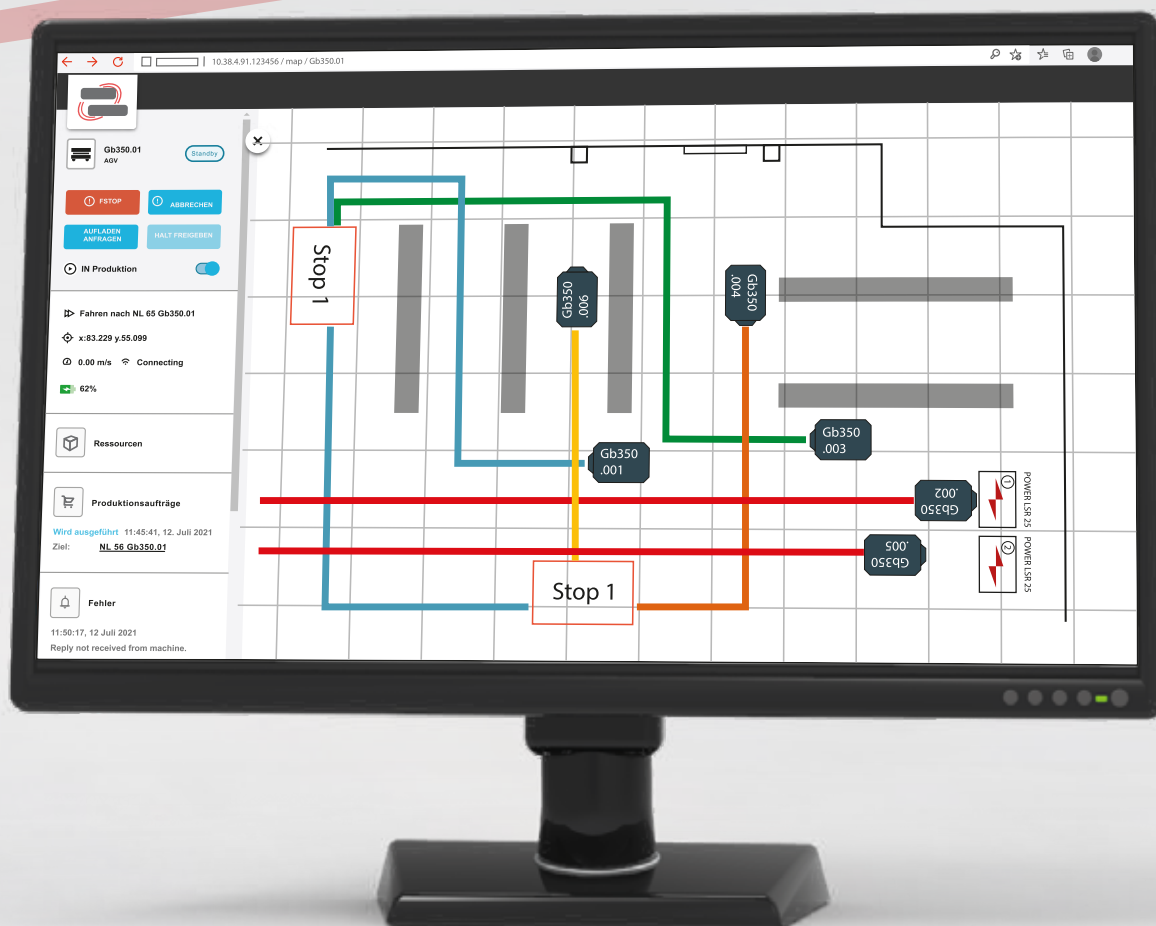
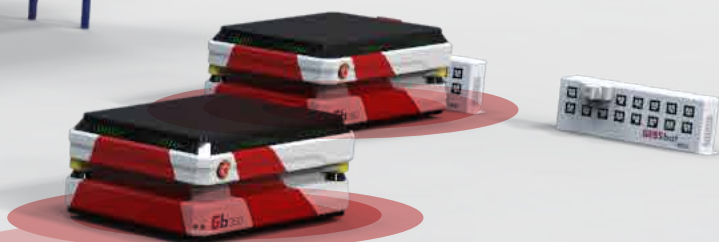
---



To complete complex logistics tasks efficiently and quickly, you need sophisticated control technology. The GESSbot Gb350 fleet management system offers all the tools you need to to operate large fleets safely and reliably.

The navigation map can be used to create any number of stations, define routes or change the directions or speed-limits. Complex task sequences are quickly and automatically assigned to the most suitable vehicle. The distance to the destination, battery charge, (still) available payload, other traffic on the route and many other aspects are taken into account, to guarantee smooth and efficient order processing.





**GESSbot**

[www.gessmann.com](http://www.gessmann.com)



# Automation and **special solutions**

## „Everything from a single source“

For many years Gessmann has been recognised as a global leader of custom solutions. We have taken this experience into the next generation and now offer our customers tailor-made solutions using the GESSbot Gb350 for logistics and automation tasks. From rack assembly e.g. for the transportation of KLT containers, to roller conveyors with automatic loading and unloading functions, scissor lift systems, and even the integration of a complete 6-axis handling robot - the possibilities are virtually endless.



Würth ORSYmat® FP & Gessmann GESSbot®



The GESSbot as a special solution is the result of a close collaboration with corporate partners, in which we endeavored to develop a solution that meets the needs of the employees and at the same time meets the highest standards in terms of efficiency, safety and quality.





Automating the material flow, relieving employees and at the same time gaining more efficiency, flexibility and safety. The razor blade manufacturer Wilkinson Sword has achieved these goals by using mobile robots. Packed with state-of-the-art sensor technology, the GESSbot moves the sharp load safely through all finishing processes.



**GESSbot**

[www.gessmann.com](http://www.gessmann.com)





# **GESS**bot®

by



**W. Gessmann GmbH**

Eppinger Straße 221

74211 Leingarten

Germany

Phone: +49 7131 4067-723

**robotics@gessmann.com**

**www.gessmann.com**

12.03.2024 V2 ENG

