

Simulation for smart manufacturing





Drive digital transformation with 3D manufacturing simulation

Simulate your concepts in minutes

Design and validate your processes and layouts quickly using ready-made 3D models with plug-and-play interfaces. Ideal for professionals at any level, our simulation software brings your entire production environment to life.

Detect early and resolve fast

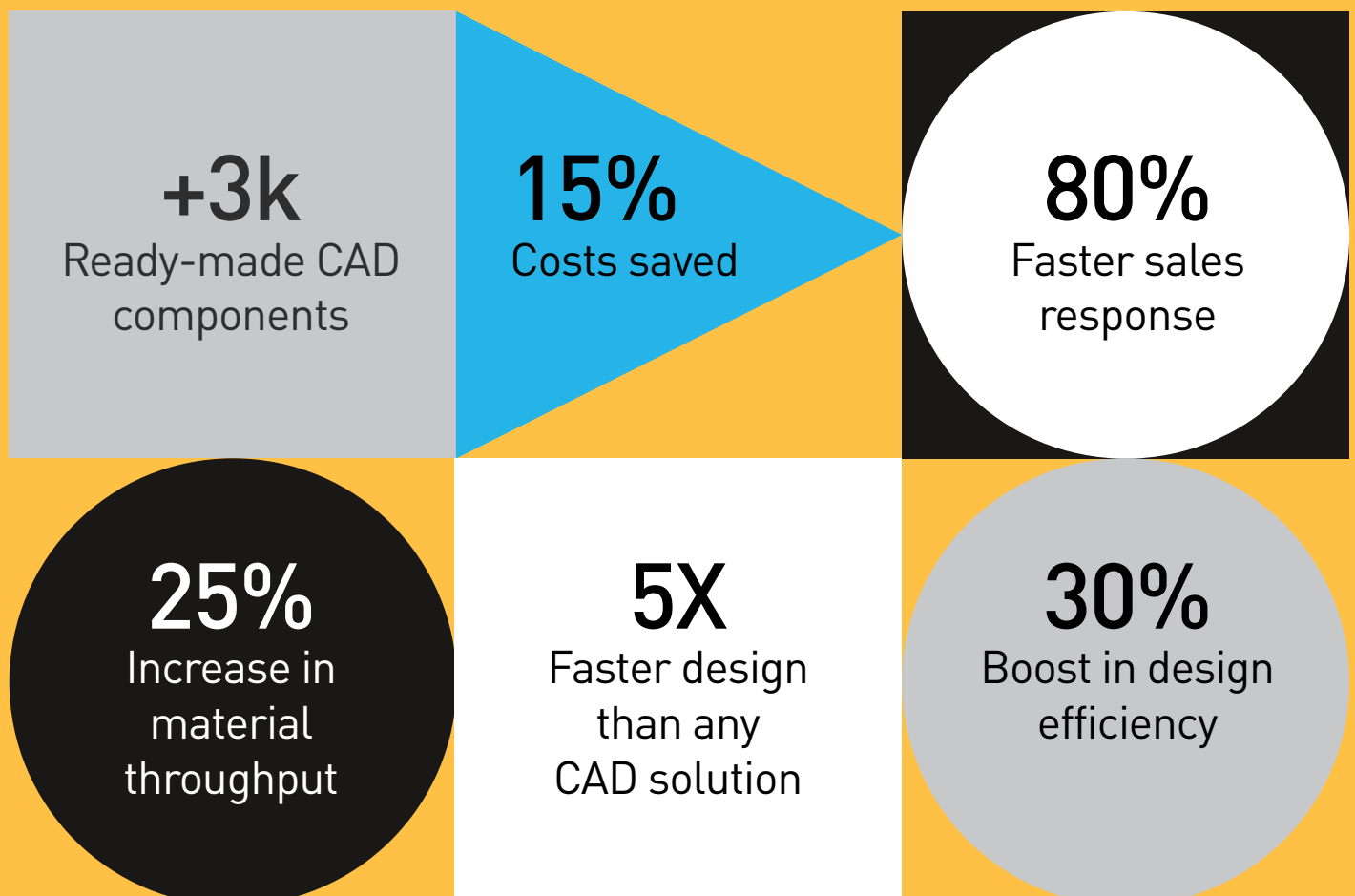
Enable early system testing and concurrent engineering by simulating and connecting with PLCs and virtual robot controllers. Optimize your models before physical commissioning to streamline workflow, reduce costs and speed up project timelines.

Minimize risks

Whether you're building a new factory, expanding your current one or automating your processes, simulation offers a virtual sandbox in which you can test your plans in advance. This allows you to spot hidden issues and minimize investment risks.

Maximize efficiency

Collect simulation data for insights into your operations and production assets. Test out different scenarios to optimize your production output, resource utilization or use of floor space. Maximize the efficiency of your systems.





Customer success stories



Visual Components is helping us start the manufacturing development process much earlier than before, and reduce critical time to market.

Miikka Ahola
Manufacturing Solutions Manager for KSU
KONE



Visual Components' solutions are simple, good looking and easy to use, and the fact that a product this effective is also affordable really sealed the deal for us.

Mika Laitinen
Sales Manager Robotics
Fastems



Using Visual Components, we were able to achieve increased efficiency gains, reduced packaging and processing costs whilst helping our customers visualise how automation could improve overall production efficiency gains. It's a game-changer.

George Walsh
Product Development Engineer at Digital
Manufacturing
DHL



We chose Visual Components' platform due to its flexibility, which gives us endless possibilities to develop the FlexLink Design tool (FlexLink's software built on top of Visual Components). The Visual Components team shows a great openness and willingness to take their products to the next level and every release brings added value to our day to day work.

Johan Wester
Software Manager
FlexLink



Learn more about the benefits of manufacturing simulation and robot offline programming (OLP) software at visualcomponents.com



Discover the full potential of your operations with our simulation software



Powerful

Leverage powerful simulations to gain deeper insights, understand, and effectively plan your manufacturing processes.



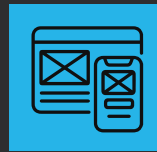
Productive

Design, analyze, refine, and validate your manufacturing layouts with Visual Components, enabling quicker, informed decision-making.



Visual

Easily manage processes by visually representing them, simplifying complex tasks with an intuitive, user-friendly interface.



Experience

Export and share your simulations across multiple platforms with our free app. This ensures everyone, everywhere can view your simulations effortlessly.



Find your local partner
at visualcomponents.com

Headquarters

Vänrikinkuja 2
02600 Espoo, Finland
sales@visualcomponents.com

Germany

Elsenheimerstrasse 63
80687 Munich, Germany
sales-dach@visualcomponents.com

Americas

550 Congressional Blvd, Suite 350
Carmel, IN 46032, United States
vcnasales@visualcomponents.com

Sweden

Blidö, Sweden
sales.sweden@visualcomponents.com