

Press Release

High-Performance Gear Solutions with Gearmotors starting at 172€ Sumitomo Drive Technologies Neo Essential Series

Markt Indersdorf (Germany) – 17.11.2025

[Sumitomo Drive Technologies](#), traditionally recognised as a premium manufacturer of advanced power transmission solutions, is launching the [Neo Essential Series](#) – a new generation of cost-effective gears and gear motors engineered to meet essential industrial performance requirements – with gearmotors starting at just 172€. This affordable lineup delivers robust torque, high efficiency, and long-term reliability in a streamlined package designed for everyday industrial applications.

Affordable Innovation for Essential Needs

For decades, Sumitomo Drive Technologies has set a benchmark for high-end gear technology, offering solutions that prioritise precision, durability, and advanced features. The Neo Essential Series represents a strategic expansion – bringing premium engineering principles into an economy version that focuses on what matters most: proven gear design, easy integration and dramatically lower cost of total ownership. With universal fitting and covering the most common power ratings, the Neo Essential range slots into existing systems quickly and easily – without expensive customisation.

Why Neo Essential Series?

By minimising complexity and prioritising reliability, the **Neo Essential Series** gives manufacturers a cost-effective path to increased uptime. A rugged design, simplified feature set, and full compliance with industry standards mean quicker commissioning, less maintenance, and longer service life – all at a fraction of traditional premium costs.

The Neo Essential Series Lineup

- **Prest Neo – Compact, Quiet, Cost Effective**

The [Prest Neo](#) delivers efficient power with low noise and enduring reliability, offering the flexibility needed to meet industrial demands.

- **Altax Neo – Cyclo® Durability & Overload Capacity**

Built on the Cyclo® principle, [Altax Neo](#) is engineered for exceptional shock and overload resistance and a long life. Its rugged design supports maintenance-free operation in demanding duty cycles.

- **Hyponic Neo – Smooth, Efficient, Right-Angle Gearmotor**
Featuring hypoid gears in a right-angle, hollow shaft configuration, [Hyponic Neo](#) provides smooth, efficient transmission with notably low noise, ideal for commercial and industrial settings where quiet reliability matters.
- **Planetra Neo – High Load, Economy Planetary Gear**
A robust, space-saving planetary design capable of handling higher radial and axial loads, [Planetra Neo](#) offers dependable performance where footprint and value are critical.

Built for Today's Manufacturing Priorities

The Neo Essential Series provides quiet operation and a long-life cycle, designed to meet the priorities of manufacturers:

- **Robustness:** Heavy-duty architectures and shock-resistant designs help ensure uptime in harsh and variable operating conditions.
- **Low-Cost Reliability:** Maintenance-free operation and proven components reduce unplanned stoppages and service intervals.
- **Efficiency:** Optimised gearing and compact housings provide focused power delivery that supports energy-saving initiatives and productivity gains.
- **Compactness:** Smaller footprints simplify integration into new and existing equipment, enabling cleaner layouts and easier access for operators.

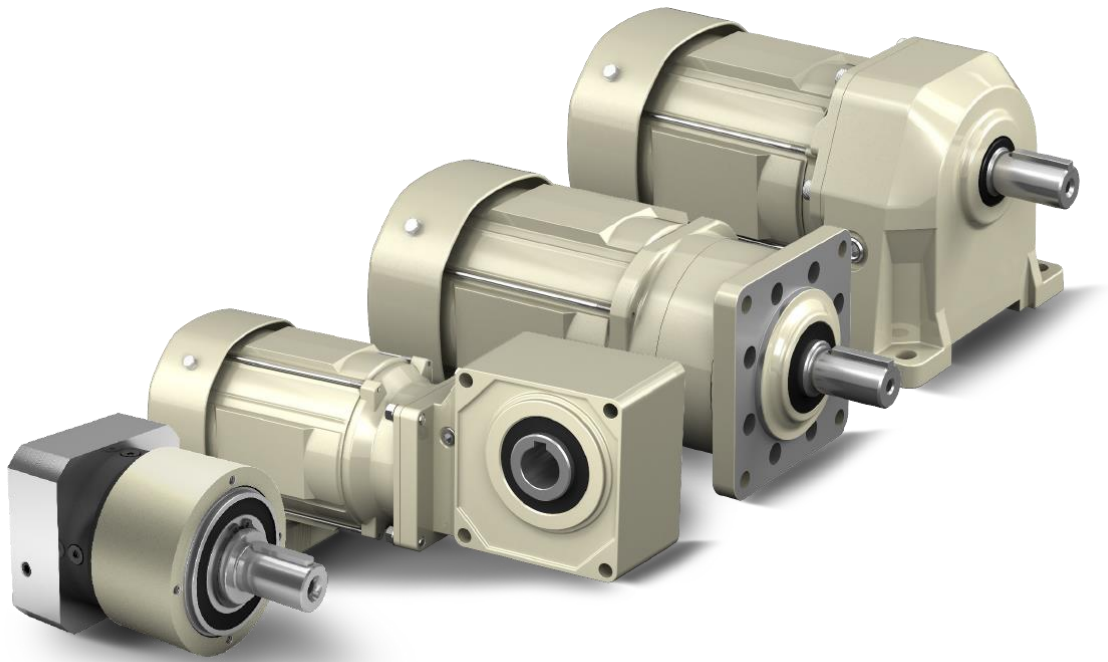
Affordable Performance Without Compromise

The Neo Essential Series offers manufacturers a budget-friendly solution without sacrificing quality or reliability. This pricing strategy makes advanced gear technology accessible to a wider range of industrial applications, helping businesses maximise ROI while minimising upfront investment – backed by Sumitomo Drive Technologies' premium engineering pedigree.

Sumitomo Drive Technologies will showcase its range of innovative drive solutions at [SPS Nuremberg](#) on 25-27 November, at booth 363 in Hall 3.

Available Images:

You can find image material for download at: <https://emeia.sumitomodrive.com/en-gb/press-material>



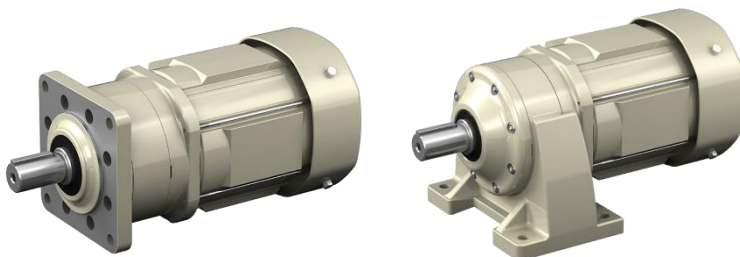
NEO Essential Series

Image Source: Sumitomo Drive Technologies



Prest Neo – Compact, Quiet, Cost Effective

Image Source: Sumitomo Drive Technologies



Altax Neo – Cyclo® Durability & Overload Capacity

Image Source: Sumitomo Drive Technologies



Hyponic Neo – Smooth, Efficient, Right-Angle Gearmotor

Image Source: Sumitomo Drive Technologies



Planetra Neo – High Load, Economy Planetary Gear

Image Source: Sumitomo Drive Technologies

About Sumitomo Drive Technologies

Sumitomo Drive Technologies is a global provider of power transmission and control solutions, supplying gear motors, gearboxes, and related services to a wide range of industries. With a long-standing commitment to engineering excellence, product reliability, and customer support, Sumitomo Drive Technologies helps manufacturers around the world to improve uptime, efficiency, and performance.

Drive Technology Close to the Customer Worldwide

With ten production sites, more than 30 assembly plants, 250 sales offices, and around 7,000 employees on five continents, Sumitomo Drive Technologies has an extensive network to be close to regional customer requirements worldwide.

Sumitomo Drive Technologies is part of Sumitomo Heavy Industries Ltd., one of the largest corporate groups in Japan and the world, with annual sales of around 7 billion euros.

For more information, visit: www.sumitomodrive.com

Press Contact:

Sumitomo Drive Technologies Communications
Cyclostraße 92

85229 Markt Indersdorf

Germany

Email: media@sumitomodrive.com

Website: www.sumitomodrive.com