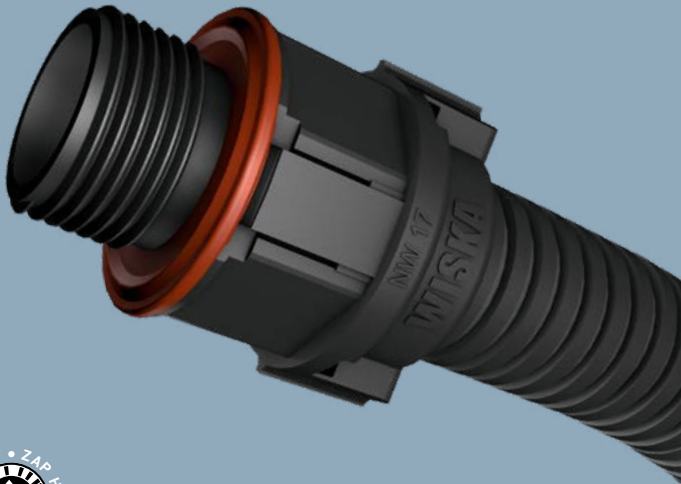


**BRACE**  
by WISKA

**WISKA** ®  
make power smile



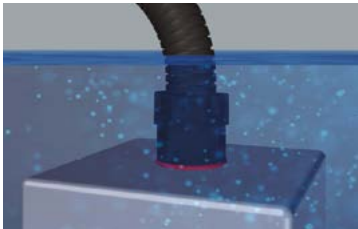
**BraceFITTING**  
IP68 conduit protection for extreme conditions



**Easy to use**

The unique clasp system for fast opening and closing with one simple tool.

# Key features



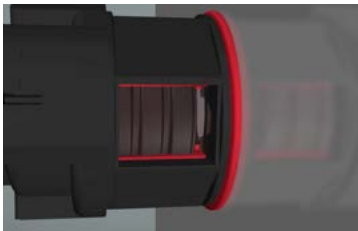
## High protection as standard:

All variants of the non-metallic BraceFITTING offer IP68 protection.



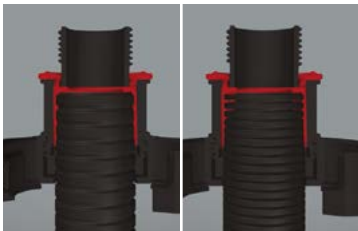
## Strain resilience:

Integrated strain relief.



## Twice the security:

The directly injected O-ring ensures secure installation and perfect sealing properties.



## Time saving:

One-piece construction that fits all.





# Fitting options



BraceFITTING



BraceFITTING with metal connecting thread (swivel)



BraceFITTING with 45° angle



BraceFITTING with 90° angle



BraceFITTING with standard cable gland (swivel)



BraceFITTING with cable gland for EMC protection (swivel)



BraceFITTING with VentGLAND®



BraceFITTING Adaptor



BraceFITTING Y-Connector



BraceFITTING T-Connector

## Technical data



<b>Protection class</b>	IP68
<b>Temperature range</b>	-40 °C - 100 °C
<b>Material Fitting</b>	Polyamide UL94 - V0, Gasket: TPU
<b>Sizes</b>	M12, M16, M20, M25, M32, M40, M50 & M63
<b>Colours</b>	

# BraceFITTING is used in these industries



Rail Industry



Automation



Shipbuilding



Wind Industry



Machine &  
Plant Engineering



Chemical  
Industry



Electrical  
Installation

**This leaflet is AR enabled.**



Download the  
free Zappor App.



Scan the target to  
unlock the content



**WISKA Hoppmann GmbH**

Kisdorfer Weg 28  
24568 Kaltenkirchen  
Germany

contact@wiska.de  
www.wiska.com

BraceFITTING 03/2020