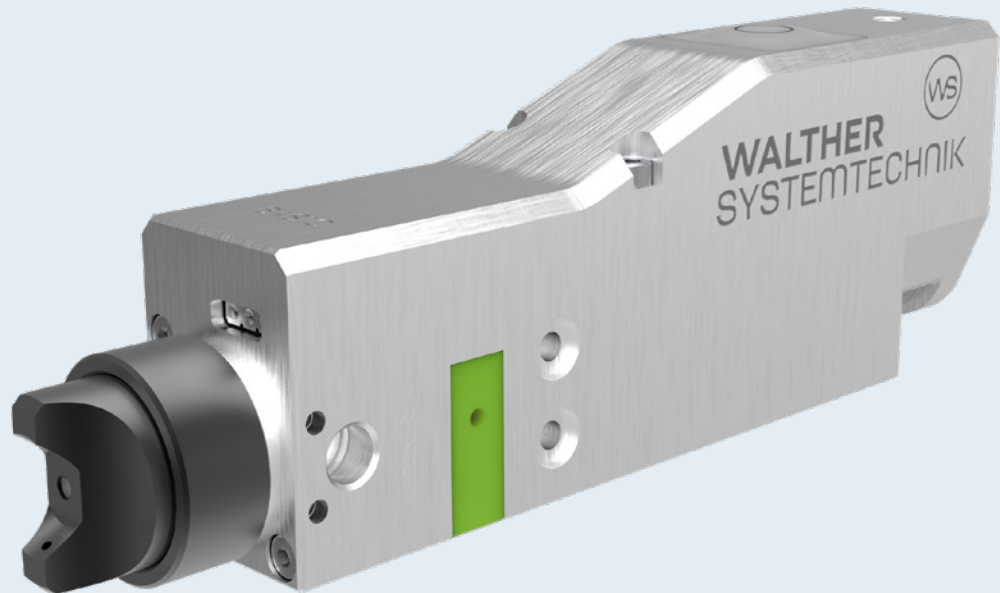


Available as

**Basic**  
**Advanced**  
**Professional**



## WSV Spray Valve

The Spray Valve with integrated  
controlling, monitoring and  
process evaluation

**WSV**

### Highlights / Benefit

- Fast and easy start-of-operation and direct controlling via web interface
- Saving costs and time when integrating without additional control technology, software or programming
- Reduction of rejects and increase of process quality by continuous process monitoring

# WSV Smart Valve: Higher process safety, less effort, more efficiency

The smart spray valve with integrated controlling, monitoring and evaluation.

This electric, universal spray valve for the reliable and consistent application of low to highly viscous media combines sophisticated technology with minimum space. The spray valve comes with integrated electronics for controlling, monitoring and evaluation; an Ethernet-based Bus system for parametering via web interface; four DIOs for connecting peripheral devices and the valve heating; temperature control and a pressure sensor for analyzing the process pressure curve\*; this spray valve offers you highest flexibility, user friendliness and process safety in use. Thanks to its very compact dimensions, the WSV can be integrated into new systems, as well as retrofitted into existing ones. You will not need additional control technology or software or programming for the operation; the integration will save money and time; and the start-of-operation is facilitated by an easy and comfortable setting of the device. Additional features such as the control of atomizer air through a proportional pressure valve (no additional control unit required), or an integrated push-button for manual operation and the upgrade option through retrofitting round off the extensive performance characteristics of this new valve type.

\*depending on model/type

Follow the  
QR-Code for  
additional  
product info



## Technical Data

Inlet pressure (medium)  
max. 50 [bar]

Inlet pressure (atomizer air)  
max. 6 [bar]

Supply voltage  
24 [VDC]

Valve heating  
0 to 80 [°C]

Ambient temperature  
- 5 to + 45 [°C]

Needle stroke adjustment  
min. 0,01 [mm]

Analog outlet  
4 to 20 [mA]

Digital I/O  
4 each 24 [VDC]

## Optional / Accessories



**Add-On**  
Needlestroke monitoring



**Add-On**  
MODBUS TCP



**Add-On**  
Multi-parameter sets



**Insulating plate**  
Valve insulation



**Nozzle / extension**  
Application image



**Bus connecting line**  
Network connection



**Connecting line**  
Power supply + IOs



**Tool set**  
Valve maintenance



**Cleaning kit**  
Valve cleaning