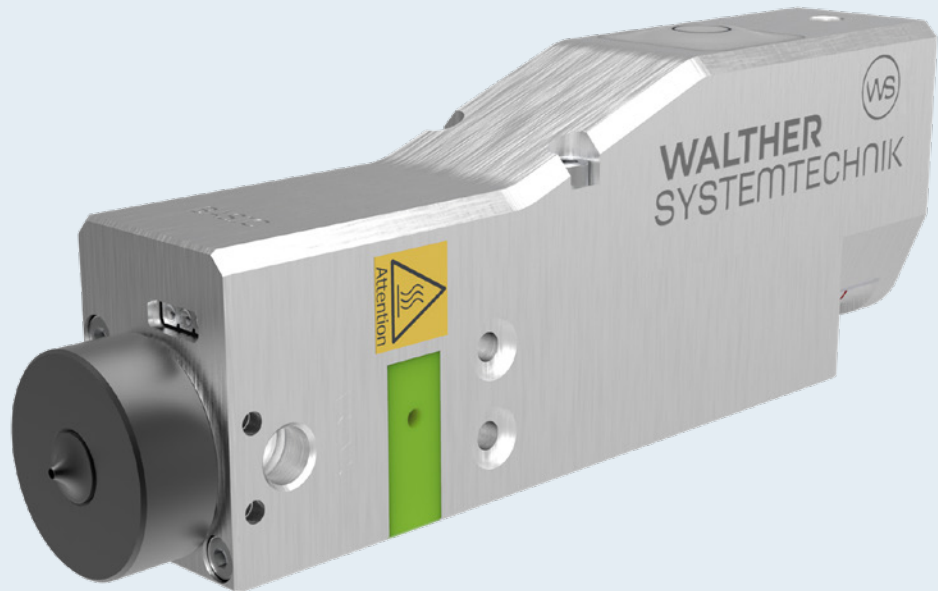


Available as

**Basic**  
**Advanced**  
**Professional**



## WPV Pulse Valve

The Pulse Valve with integrated  
controlling, monitoring and  
process evaluation

**WPV**

### Highlights / Benefit

- Fast and easy start-of-operation and direct controlling via web interface
- Saving costs and time when integrating without additional control technology, software or programming
- Entirely electric operation, no compressed air
- Reduction of rejects and increase of process quality by continuous process monitoring

# The smart pulse valve for contactless application of low to medium viscosity media

With WPV you keep the process in view and the quality under control.

With the WPV, a pulse valve is joining our I-4.0 product family, and it truly packs a punch. This is because the WPV brings to the table everything you need for the contactless application of low- to medium-viscosity media in a very compact design. The integral construction not only includes electronics for control, monitoring, and online evaluation of process data but also a pressure sensor and a valve heating system with associated temperature control. Various analog and digital connections ensure comprehensive connectivity and greatly simplify control. Access to the valve is direct – without the need for additional control technology, software, or programming – allowing for remote parameterization and diagnosis of the valve via a web interface. This already pays off in real time and cost savings during integration. Another advantage is that the WPV is operated purely electrically, eliminating the need for disruptive compressed air lines and minimizing space requirements. Overall, the WPV impresses with well-thought-out features and provides a high level of process control, which in turn positively impacts process capability, overall equipment effectiveness (OEE), and product quality. Additionally, multiple parameter sets can be stored, and process variables can be documented. Software add-ons also offer flexibility for future challenges.

Equipment depending on choice of variant

Follow the QR-Code for additional product info



## Technical Data

Inlet pressure (medium)  
max. 50 [bar]

Supply voltage  
24 [VDC]

Valve heating  
0 to 80 [°C]

Ambient temperature  
- 5 to + 45 [°C]

Analog outlet  
4 to 20 [mA]

Digital I/O  
4 each 24 [VDC]

## Optional / Accessories



**Add-On**  
Needlestroke monitoring



**Add-On**  
MODBUS TCP



**Add-On**  
Multi-parameter sets



**Insulating plate**  
Valve insulation



**Bus connecting line**  
Network connection



**Connecting line**  
Power supply + IOs



**Tool set**  
Valve maintenance



**Cleaning kit**  
Valve cleaning