

# 1/Flow of the water to be treated\*

## 2/Dosage %

## 3/Options



—  
0.15  
5.5  
—

—  
0.07  
10  
—

—  
0.05  
25  
—

—  
0.03  
8  
—

—  
0.2  
5  
—

—  
0.2  
2  
—

PVDF: housing for highly concentrated acids and other aggressive concentrates

IE: (External Injection) recommended for certain corrosive concentrates or polymers



Those options allow adapting your Dositron to your needs. Contact our technical service to help determine what option you may need.

Each Dositron unit is factory tested and registered.

## Optimum compatibility



Recommended seals:

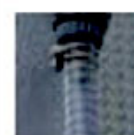
AF: for alkaline concentrates

VF: for acids, oils, odour or pest control concentrates

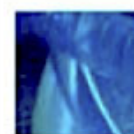
K: for highly concentrated acids (> 15 %) - systematically PVDF.



H: Hastelloy plunger rod, a highly resistant alternative to stainless steel for some models



V: Kit for viscous concentrate recommended for more than 200 or 400 cPs (depending on model)

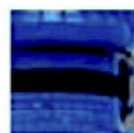


Injection hose: Special material hose and foot strainer available

## Optimum installations



BP: (Integrated by-pass) system of turning product injection on and off.



Belt: additional support for fixed or mobile installations



Kit of legs

Others: Special models, accessories and particular systems: Please consult us

\*for other motor fluids, please contact us.