

# EXPLOSION SAFETY AND PROCESS FIRE PROTECTION

## SAFE-GROUND – Monitor for earthing control



The earth connection of a fixed installation can be checked on a regular basis. For mobile installations, such as a truck, a barrel or an FIBC, the earth connection can easily be forgotten. In addition, simple clamps are often used and this connection might be neglected and/or be working inefficiently. Continuous monitoring of the earth connection is essential. The StuvEx earth monitoring system permanently monitors the earth connection and uses object recognition, thereby eliminating the possibility of incorrect use :

- Resistive system for general use with barrels, metal objects , etc.
- Capacitive system is available in order to recognise tanker trucks.
- Conductive system is available for use with FIBC (Big Bag) type C



## PAGG – CO2 industrial fire fighting

CO2 fire fighting offers a straightforward system to rapidly control incipient fires on several industrial installations. A range of safety devices is available for the instant detection of flames and their extinction, thereby preventing their propagation. The device guaranties that the fire is contained and that the shutdown of the production is limited. The system is optimised for industrial process fires (i.e. in spray booths, ovens, dedusting filters, switching cabinets, etc):

- Very fast response times;
- Built-in alarm when CO2 levels drop too much;
- Various programmable outflow functions (flooding, intermittent, delayed).



## FLASH – Dust explosion suppression system

The FLASH explosion suppression system is a flexible, modular system consisting of:

- Explosion detectors triggered by static, dynamic or optical monitoring (UV, IR, UV/IR, ...) or a combination.
- A multifunctional modular control unit;
- Ultra-fast powder extinguishers in different sizes with various types of connection flanges depending on the application.

Standard features available for all configurations are: No pressure vessels! Driven by gas generators with a very long life (up to ten years!!). A revolutionary communication protocol between the various components makes system faults due to EMC radiation on the wiring nearly impossible!



## VENTING OR ISOLATION

**VENTING** of explosion overpressure by:

- Vent panel **STUVENT** or **REFLEX**
- Flameless venting: **Flame Catcher**

**ISOLATION** of explosion propagation:

- Passive rapid valve **VENTEX**
- ATEX non-return **valve**
- Active fast slide gate valves
- Chemical barriers **FLASH**

### Additional benefits

Online vent area calculation (registration access): [www.stuvent.eu](http://www.stuvent.eu)



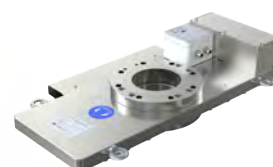
**StuVent**



**Flamecatcher**



**Ventex**



**RSV**

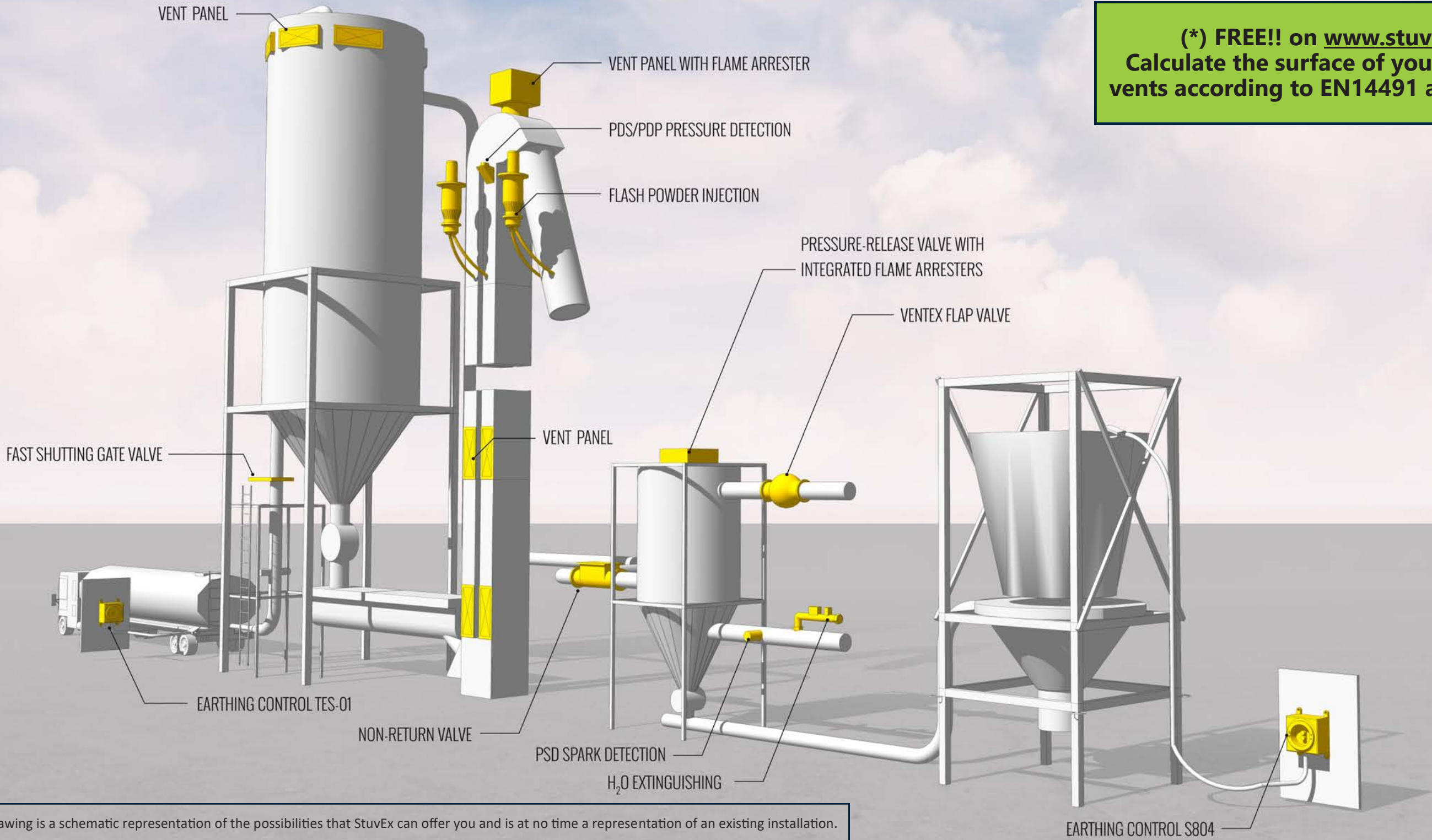


**NOVEx**

# EXPLOSION SAFETY: AN OVERVIEW

EXPLOSION PROTECTION		EXPLOSION ISOLATION	PREVENTION & DETECTION		FIRE EXTINGUISHING	SERVICES
SUPPRESSION	VENTING		EARTHING	DETECTION		
FLASH Powder Injection	Vent panels (*)	FSGV Fast Shutting Gate Valve	TES-01 (tanker trucks)	PSD Spark	PAGG (CO <sub>2</sub> )	Engineering Projects Maintenance Interventions Consulting RICO Service Partner
	Vent Panel with Flame Arrester	Non-return valve	S604 (metal barrels)	PDS / PDP Pressure	H <sub>2</sub> O	
	DQS Flameless venting	Ventex flap valve	S804 (Big Bag type C)	Gas		

(\*) **FREE!!** on [www.stuvent.eu](http://www.stuvent.eu)  
**Calculate the surface of your explosion vents according to EN14491 and EN14994**



This process drawing is a schematic representation of the possibilities that StuvEx can offer you and is at no time a representation of an existing installation.