

From process to  
measurement

# Instrumentation valves and mounting accessories



**WIKAI**

Part of your business



Alexander Wiegand,  
Chairman and CEO, WIKA

## About us

As a family-run business acting globally, with 10,200 highly qualified employees, the WIKA group of companies is a worldwide leader in pressure and temperature measurement. The company also sets the standard in the measurement of level, force and flow, and in calibration technology.

Founded in 1946, WIKA is today a strong and reliable partner for all the requirements of industrial measurement technology, thanks to a broad portfolio of high-precision instruments and comprehensive services.

With manufacturing locations around the globe, WIKA ensures flexibility and the highest delivery performance. Every year, over 50 million quality products, both standard and customer-specific solutions, are delivered in batches of 1 to over 10,000 units.

With numerous wholly owned subsidiaries and partners, WIKA competently and reliably supports its customers worldwide. Our experienced engineers and sales experts are your competent and dependable contacts locally.

# Contents

|   |                            |
|---|----------------------------|
| <b>Industries and applications</b>                                      | <b>4</b>                   |
| <b>Prevent fugitive emissions</b>                                       | <b>5</b>                   |
| <b>Combinations with measuring instruments via flange connections</b>   | <b>6</b>                   |
| <b>Combinations with measuring instruments via threaded connections</b> | <b>8</b>                   |
| <b>The products in comparison</b>                                       | <b>10</b>                  |
| <b>Instrumentation valves</b>   | <b>12</b>                  |
| Needle and multiport valve  | Models IV10, IV11 12       |
| Block-and-bleed valve   | Models IV20, IV21 12       |
| Valve manifold for differential pressure measuring instruments          | Models IV30, IV31 13       |
| Valve manifold for differential pressure measuring instruments          | Models IV50, IV51 13       |
| Ball valve, process and instrument version                              | Model BV 14                |
| Check valve   | Model CV 14                |
| Monoflange, process and instrument version                              | Model IVM 15               |
| Monoblock with threaded connection                                      | Models IBM2, IBM3 16       |
| Monoblock with flange connection  | Models IBF1, IBF2, IBF3 16 |
| <b>Special valves</b>   | <b>13</b>                  |
| High-pressure needle valve  | Model HPNV 17              |
| Monoblock for sampling and injection processes                          | Models IBS3, IBJ4 17       |
| Stopcock  | Model 910.10 18            |
| Shut-off valve  | Model 910.11 18            |
| <b>Protective devices</b>   | <b>19</b>                  |
| Snubber   | Model 910.12 19            |
| Overpressure protectors, adjustable                                     | Model 910.13 19            |
| Syphon  | Model 910.15 19            |
| <b>Mounting accessories</b>   | <b>20</b>                  |
| Connection adapter  | Model 910.14 20            |
| Instrument mounting bracket   | Model 910.16 20            |
| Sealings  | Model 910.17 20            |
| <b>Special applications and approvals</b>                               | <b>21</b>                  |
| <b>WIKA worldwide</b>   | <b>24</b>                  |

WIKA is a reliable supplier of valves and instrumentation with appropriate accessories. Thanks to the ready-to-install instrument connections, the customer receives a complete, application-specific solution that is already tested and ready for use. This results in cost and time savings for our customers.

Our valves are available with certification for fugitive emissions, fire-safe designs and with tamper-proof, lockable handles, ensuring safety for the operator, the plant and the environment.

Thanks to our worldwide network, there is always a WIKA subsidiary near you to find the best solution for your application.

We are happy to support you in the selection of the correct components for your application. Alongside the extensive selection of instrumentation valves and accessories, WIKA also offers qualified assembly of different individual components into a complete measuring arrangement (instrument hook-up).

# Industries and applications

Our wide range of valves and instrument hook-ups are used for gaseous, liquid, aggressive, highly viscous or crystallising media, also in aggressive environments. They are suitable for demanding applications in diverse industries.

- First shut-off valve for pressure tap to local instrument installation
- Media distribution, drain or vent in pipelines
- Direct connection of pressure measuring instruments to pipelines or vessels
- Wellhead control panels (WHCPs) and hydraulic power units (HPUs)
- Injection systems
- Sampling systems for process analysis
- Actuator controls
- Hydraulic power packs
- Test benches and calibration equipment
- Level measuring instruments and level indicators
- Blasting/cutting with water and high-pressure cleaning

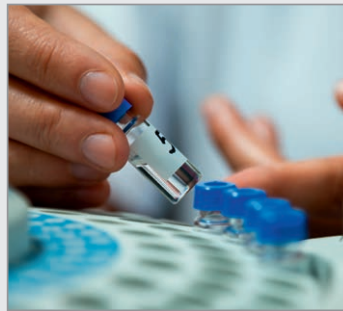
Oil & gas



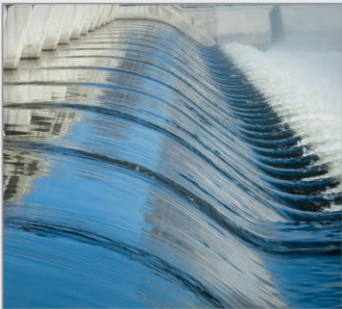
Chemical & petrochemical industries



Food & pharmaceuticals



Power generation



Water and wastewater

Machine building and automation

Power plants

Shipbuilding



# Prevent fugitive emissions

Our needle valves can be supplied in accordance with EN-ISO 15848-1 and VDI 2440. The bonnets of these valves thus offer the following safety-relevant features: blow-out-proof valve spindle, non-rotating spindle tip with metal seat (low-wear operation), low torque for smooth and precise valve adjustment, even at high pressures.

The “fugitive emission” version also offers a special sealing packing made of RTFE, a reinforced PTFE. The corresponding valves are supplied with an orange ring on the bonnet and are thus clearly identifiable.

In addition to the needle valves, model BV ball valves as well as the IBM and IBF monoblocks are also approved by the ABS Group in accordance with the international EN-ISO 15848-1 standard for fugitive emissions.

Our valve manufacturing facility has also been equipped with a new state-of-the-art liquid and gas test bench, which enables us to perform a variety of tests from -196 ... + 350 °C [-320 ... +662 °F] in-house, such as:

- Type test and certificate for fugitive emissions
- Low-temperature test and certificate down to -196 °C
- High-temperature test up to 350 °C
- Tests and certificate for low emissions
- High-pressure gas test
- Validation of the design and test bench temperature/pressure range



Safety for personnel



Safety for the environment



Safety for the instruments



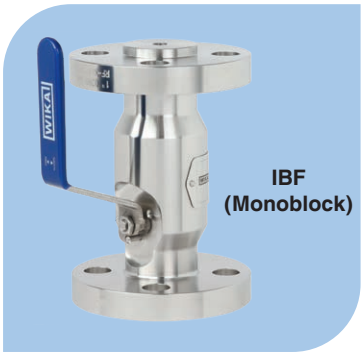
# Combinations with measuring instruments via flange connections



+

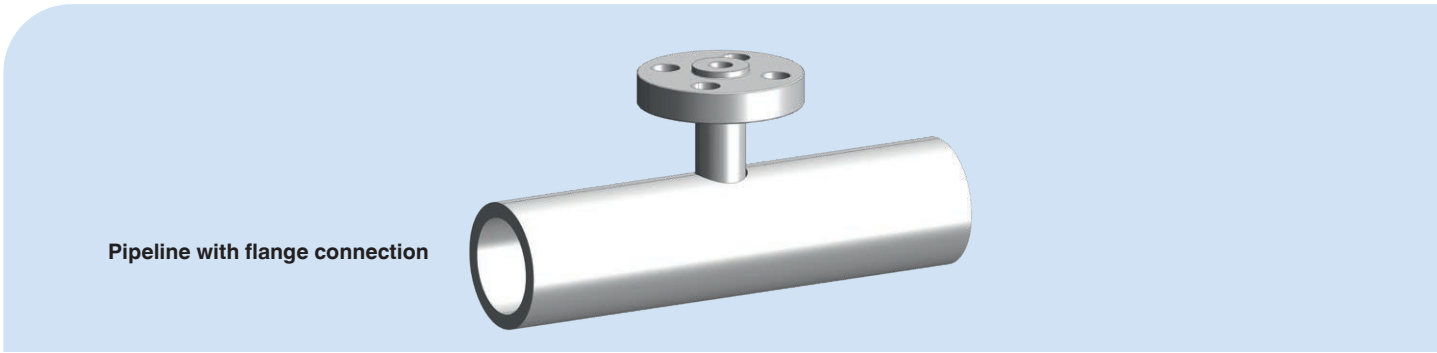
| Monoblock              |                                  |   | Monoflange  |
|------------------------|----------------------------------|---|---|
|                        |                                  |   |   |
| <b>IBF1</b><br>(Block) | <b>IBF2</b><br>(Block-and-bleed) | <b>IBF3</b><br>(Double-block-and-bleed) | <b>IVM</b><br>(Block / Block-and-bleed /<br>Double-block-and-bleed) |

+



+

+





+

Flushing ring



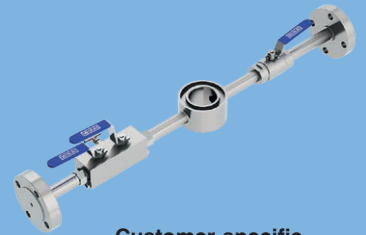
Flushing ring



Flushing ring with single needle valve



Flushing ring with double ball valve



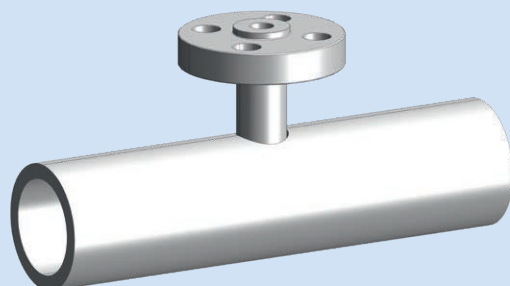
Customer-specific flushing ring

+



IBF (Monoblock)

+




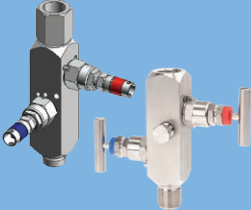




Pipeline with flange connection

# Combinations with measuring instruments via threaded connections


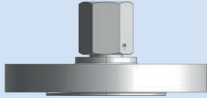


+

| Flange adapter without valve  |   | Flange adapter with valve   |  |   | Monoflange  |
|---|---|---|--|---|---|
|  |  |  |  |  |  |
| <b>910.14</b><br>Flange with connection adapter                                   | <b>910.14</b><br>Flange with integrated connection adapter                        | <b>IV1x</b><br>Block / Multiport  | <b>IV2x</b><br>Block-and-bleed   | <b>DIN shut-off valve</b><br>Block / Block-and-bleed / Double-block-and-bleed       | <b>IVM</b><br>Block / Block-and-bleed / Double-block-and-bleed                      |

+

+

**910.14**  
Flange with connection adapter

**910.14**  
Flange with integrated connection adapter

+

+



Monoblock for first isolation

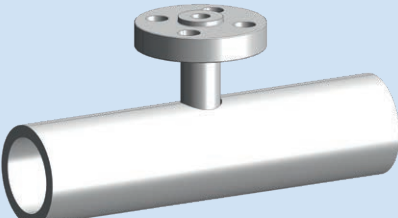


Monoblock for first isolation



+

Pipeline with flange connection







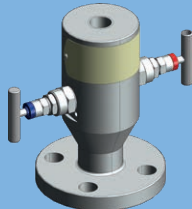
+

**Monoblock**

**Mounting accessories**



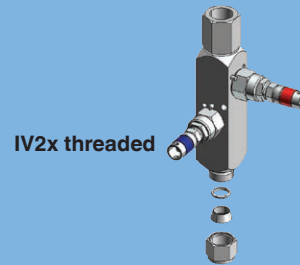
**IBF1**  
Block



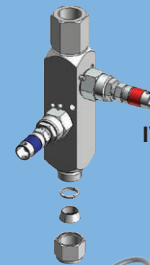
**IBF2**  
Block-and-bleed



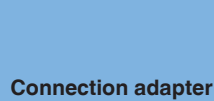
**IBF3**  
Double-block-and-bleed



IV2x threaded



IV2x compression fitting



Connection adapter

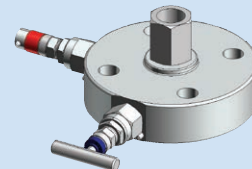


Precision pipe  
(customer supplied)

+



Flange adapter

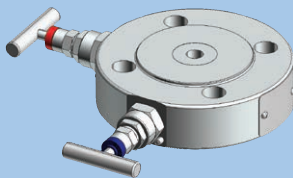


IVM  
Monoflange

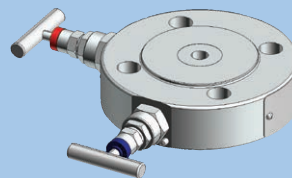


IBF1, IBF2, IBF3  
Monoblock

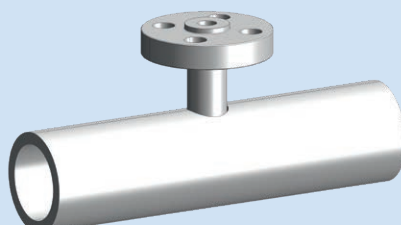
+



Sandwich monoflange IVM



+







Pipeline with flange connection

# The products in comparison

|   |  |  |                         |  |
|---|---|---|---|---|
|   | Needle valve, block-and-bleed valve   | Valve manifold  | Ball valve  | Check valve   |
| Model   | IV1, IV2  | IV3, IV5  | BV  | CV  |
| Gas application   | ◆   | ◆   | ◆   | ◆   |
| Application with liquids                                | ◆   | ◆   | ◆   | ◆   |
| Cryogenic version                                       | ◆   | ◆   | ◆   | ◆   |
| Fire-safety tested                                      | ◆   | ◆   | Process version:<br>ISO 10497 3rd ed., API<br>607 7th ed.   | ◆   |
| Fugitive-emission tested                                | TA Luft, ISO 15848-1  | TA Luft, ISO 15848-1  | ◆   | ◆   |
| Reference standards                                     | ASME B16.34,<br>ASME B1.20.1, ASME<br>B31.3, MSS SP-99                            | ASME B16.34,<br>ASME B1.20.1, ASME<br>B31.3, MSS SP-99                            | ASME B16.34,<br>ASME B1.20.1, ASME<br>B31.3, MSS SP-99,<br>ASMEBPVC, ASMEB.31.1,<br>ISO 17292, ASME B16.5 | ASME B16.34,<br>ASME B1.20.1,<br>MSS SP-99  |
| Assembly with measuring instrument (instrument hook-up) | ◆   | ◆   | ◆   | ◆   |
| Sealing packing and min. working temperature            | PTFE, RTFE and graphite<br>(min. temperature -55 °C)                              | PTFE, RTFE and graphite<br>(min. temperature -55 °C)                              | PEEK, high-temperature<br>thermoplastic (HTT)<br>(min. temperature -55 °C)                                | NBR, FKM and PTFE<br>(min. temperature -55 °C)                                      |
| Data sheet  | AC 09.22  | AC 09.19  | AC 09.28  | AC 09.29  |
| For details, see page                                   | 12  | 13  | 14  | 14  |

The information in the table above serves only as a reference and any application should be evaluated in accordance with the project specifications. WIKA can provide technical support in the evaluation of the best solution for your applications.

|     |                           |                          |                         |
|--|--|--|--|
| Monoflange, process and instrument version   | Monoblock with flange connection   | Monoblock with threaded connection   | Monoblock for sampling and injection processes   |
| IVM  | IBF  | IBM  | IBS, IBJ   |
| ◆  | ◆  | ◆  | ◆  |
| ◆  | ◆  | ◆  | ◆  |
| ◆  | ◆  | ◆  | ◆  |
| Bonnet: ISO 10497:2010, API 6FA:2018, API 607:2016                                   | ISO 10497 and API 607  | ISO 10497 and API 607  | ISO 10497 and API 607  |
| TA Luft, ISO 15848-1   | ◆  | ◆  | ◆  |
| ASME B16.34, ASME B1.20.1, ASME B31.3, MSS SP-99, ASME B.31.1, ISO 17292, ASME B16.5 | EEMUA 182, ASME B16.34, ASME B1.20.1, ASME B31.3, MSS SP-99, ASME BPVC, ASME B.31.1, ISO 17292, ASME B16.5 | EEMUA 182, ASME B16.34, ASME B1.20.1, ASME B31.3, MSS SP-99, ASME BPVC, ASME B.31.1, ISO 17292, ASME B16.5 | EEMUA 182, ASME B16.34, ASME B1.20.1, ASME B31.3, MSS SP-99, ASME BPVC, ASME B.31.1, ISO 17292, ASME B16.5 |
| ◆  | ◆  | ◆  | ◆  |
| PTFE, RTFE and graphite (min. temperature -55 °C)                                    | PEEK, PTFE, RTFE and graphite (min. temperature -55 °C), high-temperature thermoplastic (HTT)              | PEEK, PTFE and graphite (min. temperature -55 °C), high-temperature thermoplastic (HTT)                    | PEEK, PTFE, RTFE and graphite (min. temperature -55 °C), high-temperature thermoplastic (HTT)              |
| AC 09.17   | AC 09.25   | AC 09.24   | AC 09.26   |
| 15   | 16   | 16   | 17   |

Legend:

- ◆ possible
- ◆ not possible

YouTube video  
Which is the right valve for  
my pressure measuring  
instrument?



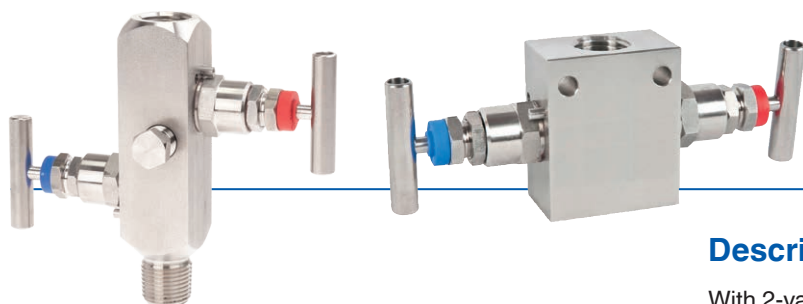
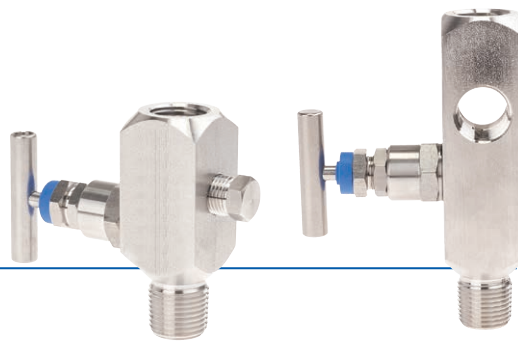
## Needle and multiport valve Models IV10, IV11

### Description

Needle valves and multiport valves separate the process from measuring instruments such as pressure gauges, switches or transmitters. By closing this valve the instrument can be safely dismantled for services like recalibration or replacement.

With the vent connection option, the instrument can be vented to the atmosphere by means of the needle valve.

Already in the standard version, the multiport valve is equipped with two additional connections. These can be used either as vent connections or for the connection of additional instruments.



## Block-and-bleed valve Models IV20, IV21

### Description

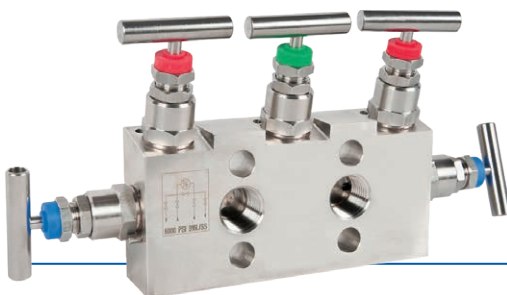
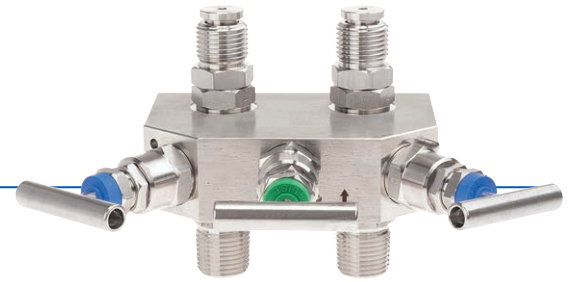
With 2-valve manifolds, the block-and-bleed version is standard. The shut-off valve separates the process from measuring instruments such as pressure gauges, switches or transmitters. By closing this valve the instrument can be safely dismantled for services like recalibration or replacement. The vent valve allows the safe venting of the instrument, prior to the dismantling or for zero point check.



## Valve manifold for differential pressure measuring instruments, 3-valve manifold Models IV30, IV31

### Description

The 3-valve manifold consists of two shut-off valves and one pressure compensating valve. The shut-off valves separate the process from the differential pressure measuring instrument. The pressure compensating valve enables the compensation between  $\oplus$  side and  $\ominus$  side to avoid one-sided overload during commissioning and operation.



## Valve manifold for differential pressure measuring instruments, 5-valve manifold Models IV50, IV51

### Description

Compared to the 3-valve manifold, the 5-valve manifold is equipped with two additional vent valves. One vent valve per pressure side allows operators the targeted venting of one or both pressure sides of the measuring arrangement.

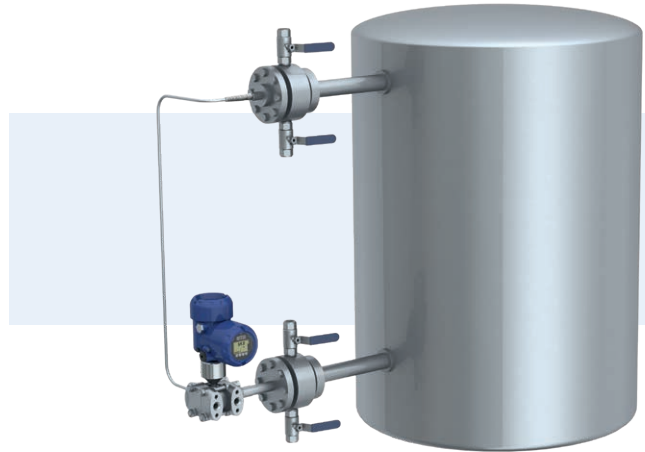
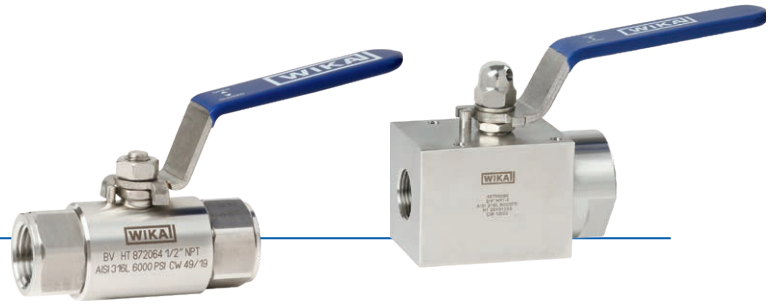




## Ball valve, process and instrument version Model BV

### Description

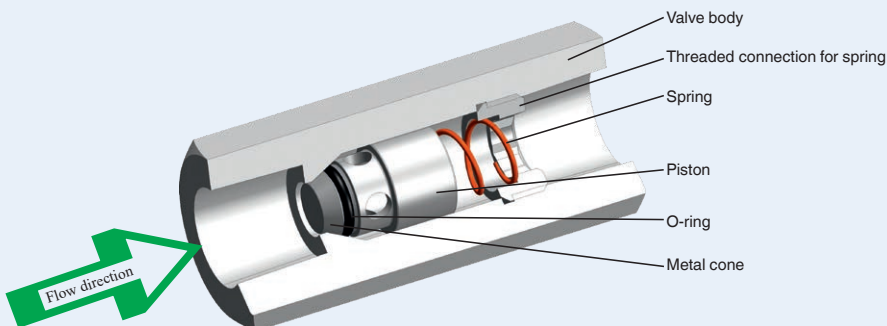
The simple and robust design, with a safety factor of 4:1, enables model BV ball valves a wide spectrum of use. This ranges from the simple distribution of compressed air through to demanding applications in the oil and gas industry. The process version of the ball valve has been designed to meet the requirements of the process industry, in particular for natural gas and aggressive media applications.



## Check valve Model CV

### Description

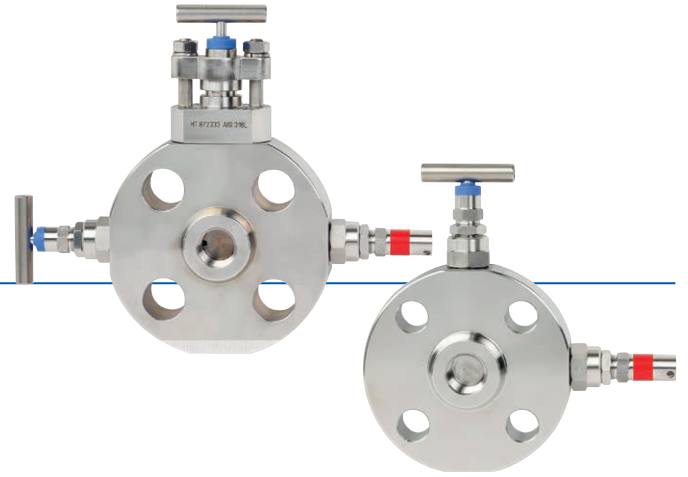
The sealing element (piston) has a double sealing system from an elastic O-ring and a metal cone. With any back pressure, the soft O-ring and then the sealing face of the metal cone prevent the reverse flow of the medium. This principle of double sealing ensures reliable leak tightness.



## Monoflange, process and instrument version Model IVM

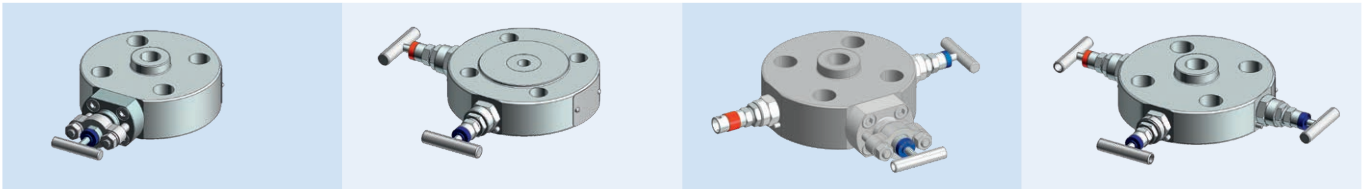
### Description

Due to its one-piece design, the model IVM monoflange can withstand high overpressures. It ensures a robust and compact mounting of the measuring instrument directly to the process flange. The use of metal and graphite seals allows working at high temperatures.

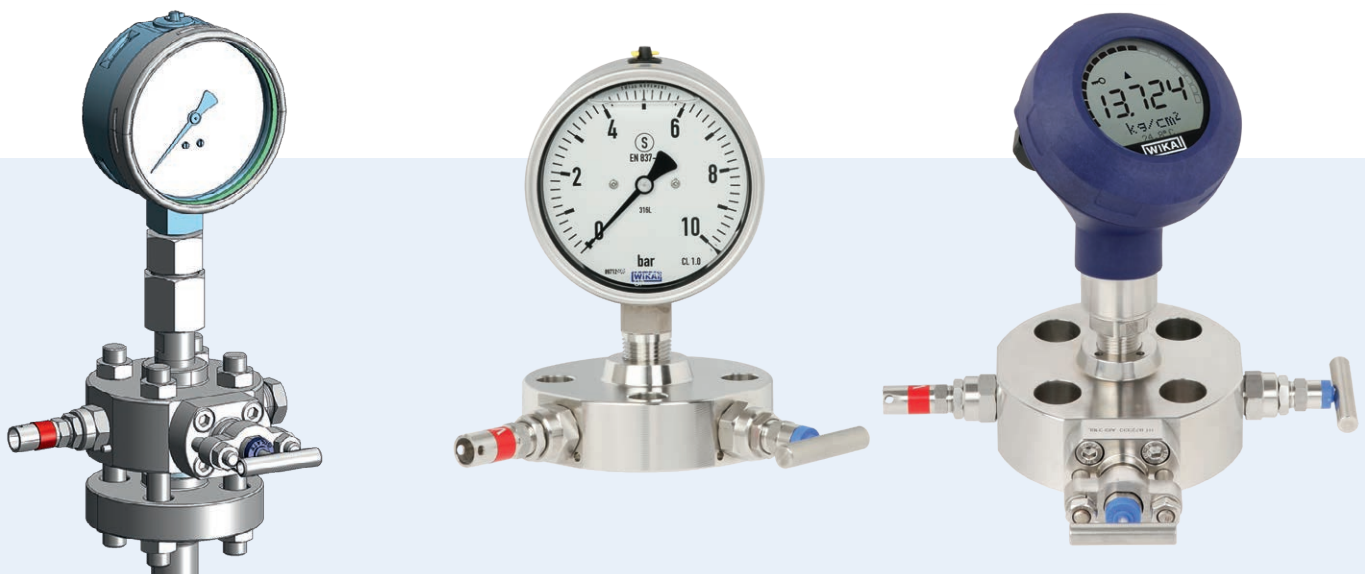
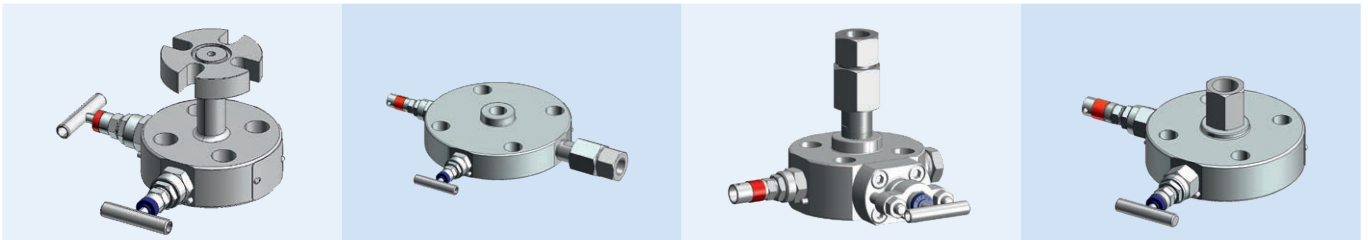


YouTube video  
What is a monoflange? | Function,  
versions and fields of application

### Different combinations for monoflanges in process and instrument version



### Special connections (IEC 61518 and union nut)



## Monoblock with threaded connection Models IBM2, IBM3

### Description

The monoblock has been designed specifically to fit into the small space of control panel and valve battery installations. With its very compact dimensions, the monoblock can be used in a wide range of applications providing high overpressure safety within a large spectrum of temperature ranges. The modular monoblock design allows using an arrangement of ball valves and/or needle valves in the same valve body.



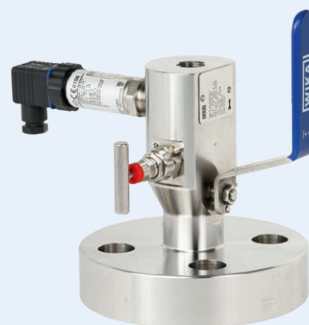
**Blog**  
Play it safe with double  
block & bleed



## Monoblock with flange connection Models IBF1, IBF2, IBF3

### Description

The monoblock has been designed to meet the requirements of the process industry, especially for natural gas and aggressive media applications. The compact design integrates one or two shut-off valves to separate the process from the instrument side and a vent valve.



## High-pressure needle valve Model HPV

### Description

The model HPV high-pressure needle valves have been developed for high-pressure applications of 15,000 ... 60,000 psi (1,034 ... 4,136 bar). The valve is particularly suitable for control panels, where the space is restricted, or for test benches.



The non-rotating valve spindle prevents seizing and scoring, even if the valve is rarely opened or only partially closed.

With the blow-out proof design of the valve, working safety is ensured, especially in applications with high pressure loading and frequent pressure cycles.



## Monoblock for sampling and injection processes Models IBS3, IBJ4

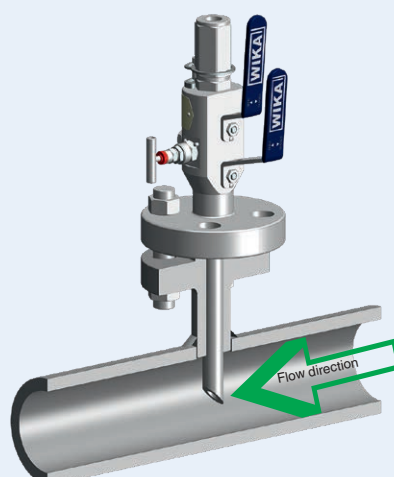
### Description

The monoblock with probe for sampling and injection processes has been designed to meet the requirements of the process industry. It is especially well suited to applications in natural gas and aggressive media. The compact design integrates two shut-off valves to separate the process from the instrument side.

Model IBS3, for sampling processes



Model IBJ4, for injection processes



## Stopcock Model 910.10

### Specifications per data sheet:

AC 09.01

### Design:

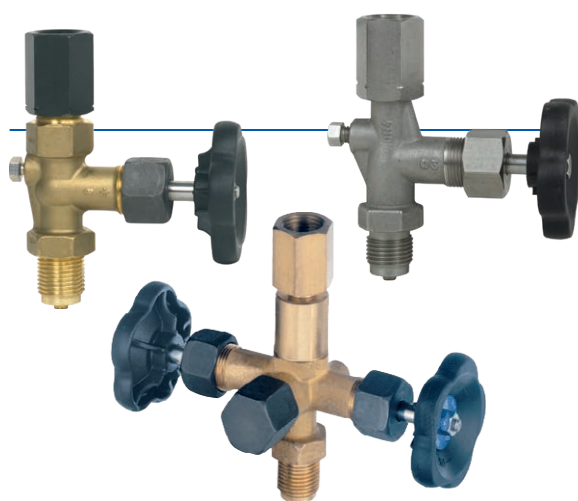
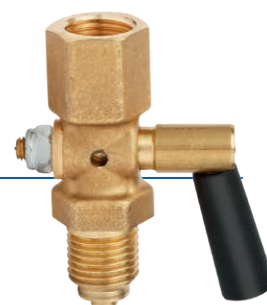
- DIN 16261: PN 16 cocks with female/female and female/male connection for pressure gauges
- DIN 16262: PN 6 and PN 16 cocks with adjusting nut and male connection for pressure gauges
- DIN 16263: PN 16 cocks with adjusting nut and male connection and test connection for pressure gauges

### Max. medium temperature:

+50 °C

### Nominal pressure:

To 25 bar



## Shut-off valve Model 910.11

### Specifications per data sheet:

AC 09.02

### Design:

- DIN 16270: With vent screw
- DIN 16271: With test connection M20 x 1.5 and vent screw
- DIN 16272: With separate isolating test connection M20 x 1.5

### Form A

LH-RH adjusting nut - male

### Form B

Nipple and union nut - male, with shaft for instrument mounting bracket

### Max. medium temperature:

- Brass: PN 250 (G ¼ thread: PN 125)
- Steel / Stainless steel: PN 400







## Snubbers, adjustable Model 910.12

### Specifications per data sheet:

AC 09.03

### Design:

Brass, steel and stainless steel 316Ti / 1.4571

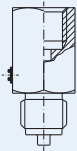
### Max. medium temperature:

+120 °C

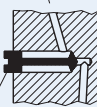
Snubbers are used to reduce the effects of pressure surges on the measuring instrument.

### Operating principle

to the pressure measuring instrument



Adjustment screw



from the measuring location

## Overpressure protector, adjustable Model 910.13

### Specifications per data sheet:

AC 09.04

### Design:

Valve body from brass or stainless steel 316Ti / 1.4571

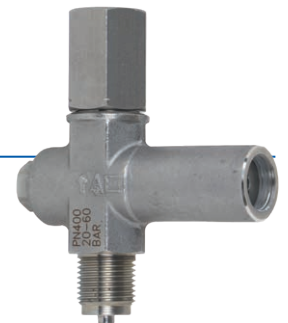
### Setting ranges:

0.4 ... 2.5 bar / 2 ... 6 bar / 5 ... 25 bar / 20 ... 60 bar /  
50 ... 250 bar / 240 ... 400 bar

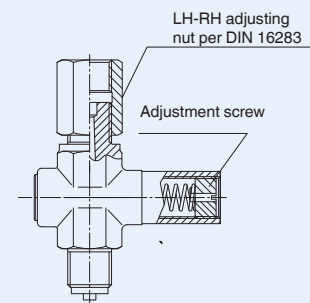
### Max. temperature:

+130 °C

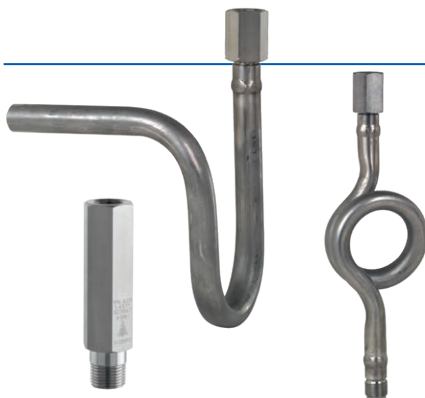
Through a helical spring, the outlet position is maintained until the pressure acting on the piston overcomes the back pressure of the spring, thus closing the valve. Once the pressure drops, the valve opens again and the piston returns to its resting position.



Form A, LH-RH adjusting nut/male



## Syphon Model 910.15



### Specifications per data sheet:

AC 09.06

### Design:

DIN 16282 / Industrial standard designs

### Form:

U-form / trumpet form / compact syphon

### Max. operating pressure and temperature:

- 104 bar / 400 °C
- 120 bar / 300 °C
- 160 bar / 120 °C
- 420 bar / 100 °C (compact syphon)

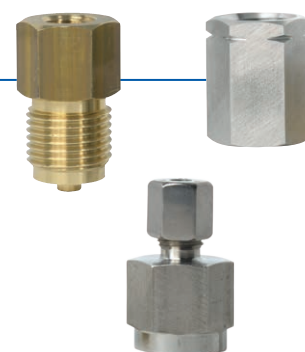
## Connection adapter Model 910.14

**Specifications per data sheet:**

AC 09.05

**Design:**

- Female - male
- Female - female
- Male - male
- Self-sealing connecting nipple
- LH-RH adjusting nut DIN 16283
- Union nut and nipple DIN 16284
- Compression fitting with ferrule



## Instrument mounting bracket Model 910.16

**Specifications per data sheet:**

AC 09.07

**Design:**

- Instrument mounting bracket for connection via adapter: Bracket per DIN 16281 form H for wall mounting and form A for wall, pipe and support mounting
- Bracket for pipe mounting
- Adapter
- Instrument mounting bracket for connection without adapter: Bracket for wall mounting or pipe mounting



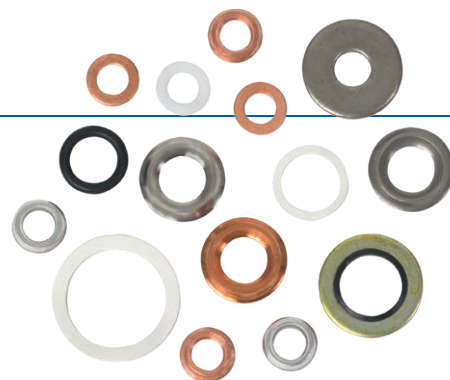
## Sealings Model 910.17

**Specifications per data sheet:**

AC 09.08

**Design:**

- WIKA sealing
- Flat gasket
- Edge sealing ring



# Special applications

Blog  
Combination of pressure measuring instrument with accessories – Hook-up instead of own assembly



## Mounting arrangements



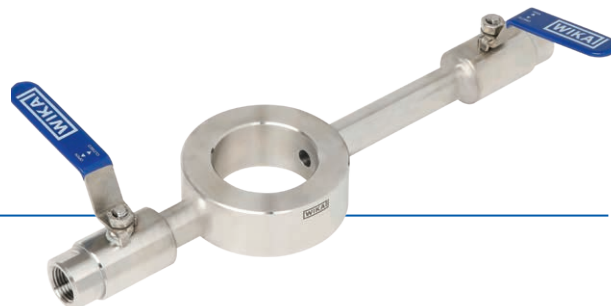
Diaphragm seal assembly

Instrument hook-up

WIKA is happy to support you in the selection of the correct components for your application. Alongside the extensive selection of instrumentation valves and accessories, WIKA also offers qualified assembly of different individual components into a complete measuring arrangement (“instrument hook-up”).

In addition to the valves and protective devices described here, combination with diaphragm seal systems is also possible.

## Flushing ring



Flushing rings enable cleaning and maintenance of the measuring location without time-consuming dismounting of the measuring system. Cleaning is carried out via the bore of the flushing ring. For a problem-free supply of the respective cleaning medium, a needle valve or a ball valve, for example, can be mounted to the flushing ring. Due to their high-quality workmanship, WIKA needle valves enable precise control of the media flow, even at high pressures.

WIKA ball valves can be used, in particular, with viscous cleaning liquids.

The function of the flushing ring, in conjunction with an upstream shut-off valve, also enables simple on-site calibration of the measuring location. The process can also be vented or drained via the bore and valve. With the aid of the flushing ring, users can also take samples of the process medium.

### Advantages

- Easy cleaning and maintenance
- On-site calibration
- Venting of the process
- Sampling

Model 910.27 flushing rings, with appropriate connections and materials, can be adapted to almost any application. There are versions with a bore on one or both sides, which are suitable for a wide range of cleaning applications. Installation is simple and leak-free.

## Special solutions



Flushing ring for flange-connection diaphragm seals



Needle valve, block-and-bleed valve



Monoflange, process and instrument version

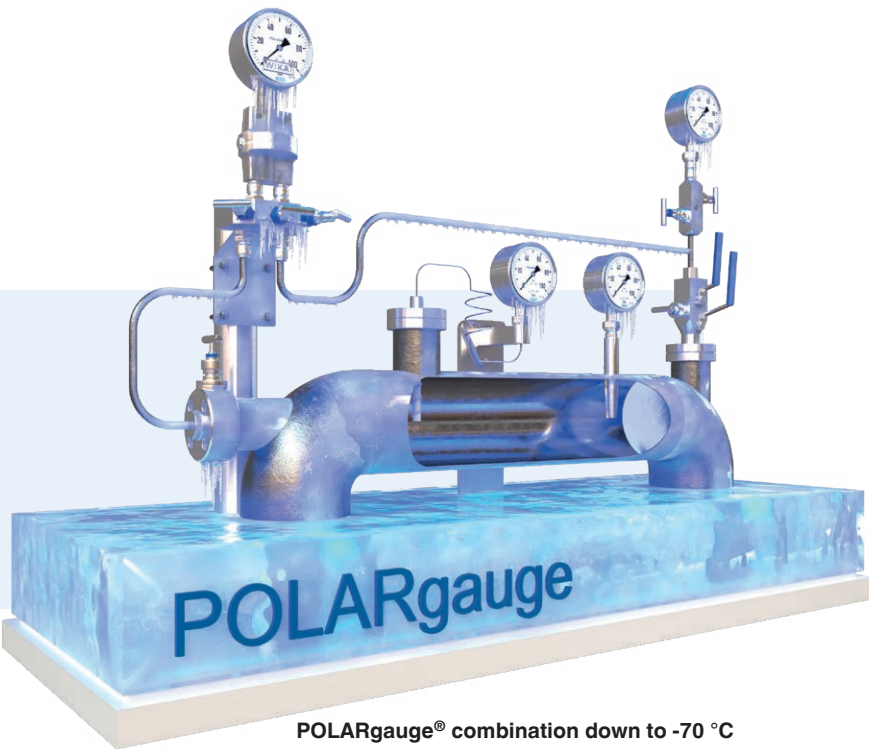


Monoblock with flange connection



Ball valve

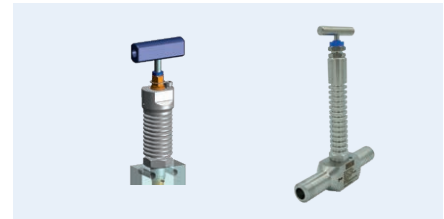
## For use at low temperatures



POLARgauge® combination down to -70 °C

The POLARgauge® and POLARvalve series have been designed specifically for measurement at extremely low ambient temperatures down to -70 °C. The instruments are mainly used in crude oil and natural gas processing.

For this product family, a special low-temperature silicone oil has been specified. Even at -70 °C, this oil remains in a state that enables correct measurement and measured value display.



Option: Cryogenic needle valve bonnet down to -196 °C

## Other versions of needle and ball valves



# Certificates and approvals

Given the increasing demands in terms of quality and product safety of industrial products, certified measuring instruments for pressure contribute considerably to the safety of the production processes. Therefore we offer a wide range of approvals and certificates.

## Tests

- PMI test
- Roughness measurement
- Coating thickness measurement
- Dye penetrant test
- Surface roughness
- Leak test
- Pressure test

## Approvals

- Pressure equipment directive
- EHEDG
- 3-A
- FDA
- NACE
- BAM
- EAC
- GOST
- ATEX

## Certificates

- Ingress protection
- Material proof
- RoHS
- Oil- and grease-free
- Accuracies of the span
- Switching accuracy
- Indication accuracy





# WIKA worldwide

## Europe

**Austria**  
WIKA Messgerätevertrieb  
Ursula Wiegand GmbH & Co. KG  
Perfektastr. 73  
1230 Vienna  
Tel. +43 1 8691631  
info@wika.at  
www.wika.at

**Belarus**  
IOOO «WIKA BELRUS»  
18B Krasnozvezdnaya Street, office 61  
220034 Minsk  
Tel. +375 17 2244164  
info@wika.by  
www.wika.by

**Benelux**  
WIKA Benelux  
Industrial estate De Berk  
Newtonweg 12  
6101 WX Echt  
Tel. +31 475 535500  
info@wika.nl  
www.wika.nl

**Bulgaria**  
WIKA Bulgaria EOOD  
Akad.Ivan Geshov Blvd.2E  
Business Center Serdika, building 3  
Office 3/104  
1330 Sofia  
Tel. +359 2 82138-10  
info@wika.bg  
www.wika.bg

**Croatia**  
WIKA Croatia d.o.o.  
Hrastovicka 19  
10250 Zagreb-Lucko  
Tel. +385 1 6531-034  
info@wika.hr  
www.wika.hr

**Denmark**  
WIKA Danmark A/S  
Banevænget 13  
3460 Birkerød  
Tel. +45 4581 9600  
info@wika.as  
www.wika.as

**Finland**  
WIKA Finland Oy  
Tammasaarenkatu 1  
00180 Helsinki  
Tel. +358 9 682492-0  
info@wika.fi  
www.wika.fi

**France**  
WIKA Instruments s.a.r.l.  
Immeuble Le Trident  
38 avenue du Gros Chêne  
95220 Herblay  
Tel. +33 1 787049-46  
info@wika.fr  
www.wika.fr

**Germany**  
WIKA Alexander Wiegand SE & Co. KG  
Alexander-Wiegand-Str.30  
63911 Klingenberg  
Tel. +49 9372 132-0  
info@wika.de  
www.wika.de

**Italy**  
WIKA Italia S.r.l. & C. S.a.s.  
Via G. Marconi 8  
20044 Arese (Milano)  
Tel. +39 02 93861-1  
info@wika.it  
www.wika.it

**Poland**  
WIKA Polska spółka z ograniczoną  
odpowiedzialnością sp. k.  
Ul. Legska 29/35  
87-800 Wloclawek  
Tel. +48 54 230110-0  
info@wikapolska.pl  
www.wikapolska.pl

**Romania**  
WIKA Instruments Romania S.R.L.  
050897 Bucuresti  
Calea Rahovei Nr.266-268  
Corp 61, Etaj 1  
Tel. +40 21 4048327  
info@wika.ro  
www.wika.ro

**Russia**  
AO "WIKI MERA"  
Sosenskoye settlement  
Nikolo-Khovanskoye, 1011A / 1  
office 2 / 2.09  
142770, Moscow  
Tel. +7 495-648018-0  
info@wika.ru  
www.wika.ru

**Serbia**  
WIKI Mema Tehnika d.o.o.  
Sime Solaje 15  
11060 Beograd  
Tel. +381 11 2763722  
info@wika.rs  
www.wika.rs

**Spain**  
Instrumentos WIKI S.A.U.  
C/Josep Carner, 11-17  
08205 Sabadell Barcelona  
Tel. +34 933 9386-30  
info@wika.es  
www.wika.es

**Switzerland**  
WIKI Schweiz AG  
Industriestrasse 11  
6285 Hitzkirch  
Tel. +41 41 91972-72  
info@wika.ch  
www.wika.ch

**Turkey**  
WIKI Instruments  
Endüstriyel Ölçüm Cihazları Tic. Ltd. Şti.  
Şerifali Mah. Bayraktar Bulvarı No:17  
34775 Ümraniye, İstanbul  
Tel. +90 216 41590-66  
info@wika.com.tr  
www.wika.com.tr

**Ukraine**  
TOV WIKI Prylad  
Str. Generala Almazova, 18/7  
Office 101  
01133 Kiev  
Tel. +38 044 496 83 80  
info@wika.ua  
www.wika.ua

**United Kingdom**  
WIKI Instruments Ltd  
Merstham, Redhill RH13LG  
Tel. +44 1737 644-008  
info@wika.co.uk  
www.wika.co.uk

## North America

**Canada**  
WIKI Instruments Ltd.  
Head Office  
3103 Parsons Road  
Edmonton, Alberta, T6N 1C8  
Tel. +1 780 4637035  
info@wika.ca  
www.wika.ca

**USA**  
WIKI Instrument, LP  
1000 Wiegand Boulevard  
Lawrenceville, GA 30043  
Tel. +1 770 5138200  
info@wika.com  
www.wika.com

Gayesco-WIKA USA, LP  
229 Beltway Green Boulevard  
Pasadena, TX 77503  
Tel. +1 713 4750022  
info@wikahouston.com  
www.wika.us

Mensor Corporation  
201 Barnes Drive  
San Marcos, TX 78666  
Tel. +1 512 3964200  
sales@mensor.com  
www.mensor.com

## Latin America

**Argentina**  
WIKI Argentina S.A.  
Cte. Benjamin Franklin 600  
(B1603BRL) Villa Martelli  
Buenos Aires  
Tel. +54 11 5442 0000  
ventas@wika.com.ar  
www.wika.com.ar

**Brazil**  
WIKI do Brasil Ind. e Com. Ltda.  
Av. Ursula Wiegand, 03  
18560-000 Iperó - SP  
Tel. +55 15 3459-9700  
vendas@wika.com.br  
www.wika.com.br

**Chile**  
WIKI Chile S.p.A.  
Av. Providencia 2319  
Providencia Santiago  
Tel. +56 9 4279 0308  
info@wika.cl  
www.wika.cl

**Colombia**  
Instrumentos WIKI Colombia S.A.S.  
Avenida Carrera 63 # 98 - 25  
Bogotá - Colombia  
Tel. +57 601 7021347  
info@wika.co  
www.wika.co

**Mexico**  
Instrumentos WIKI Mexico  
S.A. de C.V.  
Callezada San Isidro No. 97 P1-1  
Col. San Francisco Tepecala Deleg.  
Azcapotzalco  
Ciudad de Mexico CP.02730  
Tel. +52 55 50205300  
ventas@wika.com  
www.wika.mx

## Asia

**China**  
WIKI Instrumentation Suzhou Co., Ltd.  
81, Ta Yuan Road, SND  
Suzhou 215011  
Tel. +86 512 6878 8000  
info@wika.cn  
www.wika.com.cn

**India**  
WIKI Instruments India Pvt. Ltd.  
Village Kesnand, Wagholi  
Pune - 412 207  
Tel. +91 20 66293-200  
sales@wika.co.in  
www.wika.co.in

**Japan**  
WIKI Japan K. K.  
MG Shibaura Bldg. 6F  
1-8-4, Shibaura, Minato-ku  
Tokyo 105-0023  
Tel. +81 3 5439-6673  
info@wika.co.jp  
www.wika.co.jp

**Kazakhstan**  
TOO WIKI Kazakhstan  
Microdistrict 1, 50/2  
050036 Almaty  
Tel. +7 727 225 9444  
info@wika.kz  
www.wika.kz

**Korea**  
WIKI Korea Ltd.  
39 Gajangsaneopseo-ro Osan-si  
Gyeonggi-do 447-210  
Tel. +82 2 869-0505  
info@wika.co.kr  
www.wika.co.kr

**Malaysia**  
WIKI Instrumentation (M) Sdn. Bhd.  
No. 23, Jalan Jurukur U1/19  
Hicom Glenmarie Industrial Park  
40150 Shah Alam, Selangor  
Tel. +60 3 5590 6666  
info@wika.my  
vendas@wika.com.br  
www.wika.my

**Philippines**  
WIKI Instruments Philippines Inc.  
Ground Floor, Suite A  
Rose Industries Building  
#11 Pioneer St., Pasig City  
Philippines 1600  
Tel. +63 2 234-1270  
info@wika.ph  
www.wika.ph

**Singapore**  
WIKI Instrumentation Pte. Ltd.  
13 Kian Teck Crescent  
628878 Singapore  
Tel. +65 6844 5506  
info@wika.sg  
www.wika.sg

**Taiwan**  
WIKI Instrumentation Taiwan Ltd.  
Min-Tsu Road, Pinjen  
32451 Taoyuan  
Tel. +886 3 420 6052  
info@wika.tw  
www.wika.tw

**Thailand**  
WIKI Instrumentation Corporation  
(Thailand) Co., Ltd.  
850/7 Lat Krabang Road, Lat Krabang  
Bangkok 10520  
Tel. +66 2 32668-73  
info@wika.co.th  
www.wika.co.th

## Africa / Middle East

**Egypt**  
WIKI Near East Ltd.  
Villa No. 6, Mohamed Fahmy  
Elmohdar St. - of Eltayaran St.  
1st District - Nasr City - Cairo  
Tel. +20 2 240 13130  
info@wika.com.eg  
www.wika.com.eg

**Namibia**  
WIKI Instruments Namibia Pty Ltd.  
P.O. Box 31263  
Pionierspark  
Windhoek  
Tel. +26 4 61238811  
info@wika.com.na  
www.wika.com.na

**Nigeria**  
WIKI WEST AFRICA LIMITED  
Block B10, 1004 Estate  
Victoria Island, Lagos  
Tel. +234 17130019  
info@wika.com  
www.wika.com.eg

**Saudi Arabia**  
WIKI Saudi Arabia Llc  
Wh#3, Al Tauun Al Khobar 34644  
Baghlaif Al Sanaiya Aziziya  
Plan Sh-Kh 564, Land No 13&15  
Al Khobar  
Tel. +966 53 555 0874  
mohammed.khaiz@wika.com  
www.wika.ae

**South Africa**  
WIKI Instruments Pty. Ltd.  
Chilvers Street, Denver  
Johannesburg, 2094  
Tel. +27 11 62100-00  
sales@wika.co.za  
www.wika.co.za

**United Arab Emirates**  
WIKI Middle East FZE  
Warehouse No. RB08JB02  
P.O. Box 17492  
Jebel Ali, Dubai  
Tel. +971 4 883-9090  
info@wika.ae  
www.wika.ae

## Australia

**Australia**  
WIKI Australia Pty. Ltd.  
Unit K, 10-16 South Street  
Rydalmere, NSW 2116  
Tel. +61 2 88455222  
sales@wika.com.au  
www.wika.com.au

**New Zealand**  
WIKI Instruments Limited  
Unit 7 / 49 Sainsbury Road  
St Lukes - Auckland 1025  
Tel. +64 9 8479020  
info@wika.co.nz  
www.wika.co.nz