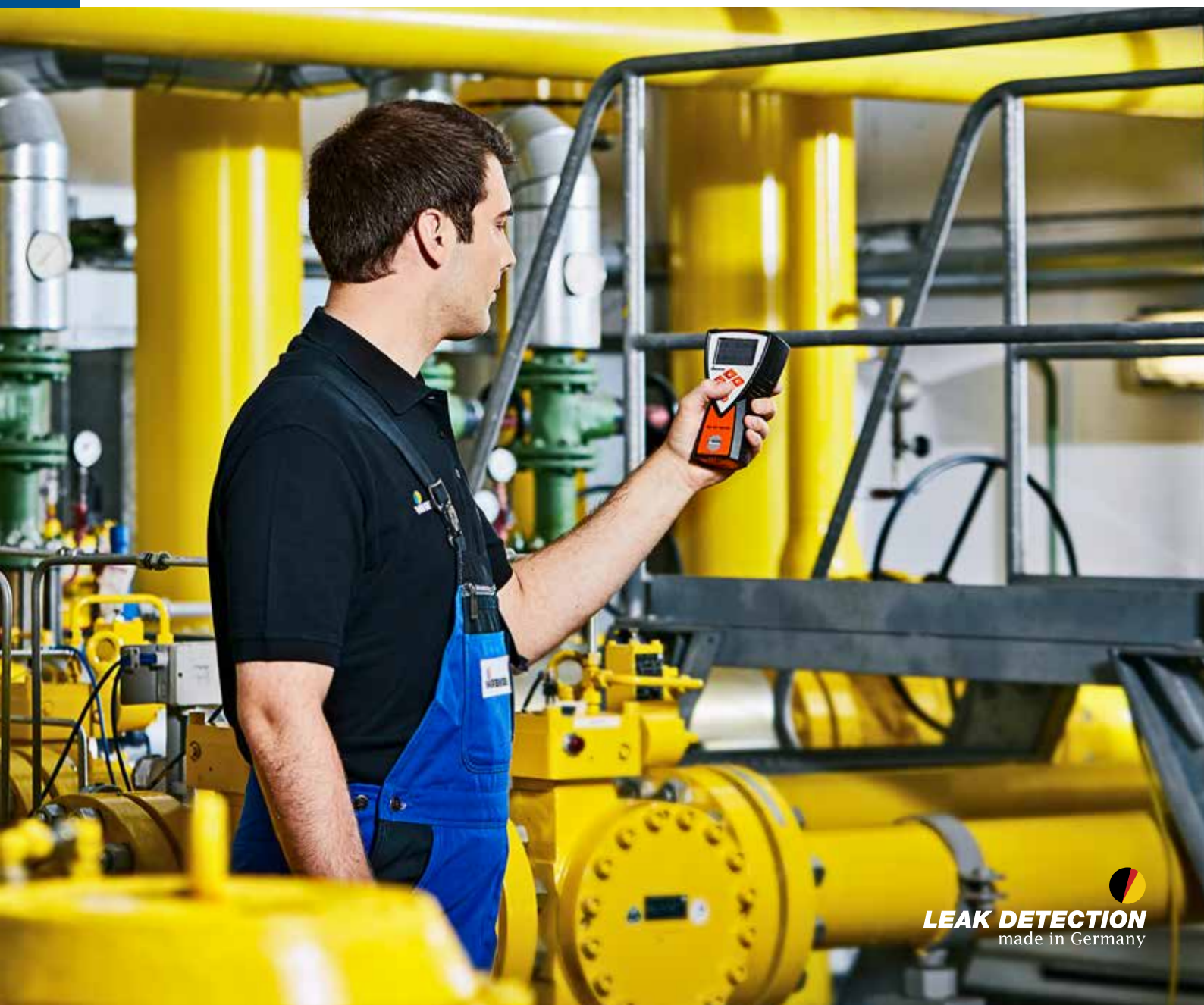


EX-TEC® PM 580 · 550 · 500

Detecting, measuring & warning
Everything you need





Portable gas concentration measuring device for detecting, measuring and warning

The mobile gas measuring and gas warning devices from the **EX-TEC® PM 5xx** series make the everyday work of gas fitters, maintenance staff and other technical staff easier. They can be used to locate leaks in freely accessible gas pipes, assess the risk of explosion and determine whether toxic gases are within the occupational exposure limits (OEL). In the Structure application, the **EX-TEC® PM 580** displays the carbon monoxide concentration in the room air and triggers an audible and visual alarm if the values are too high. Toxic carbon monoxide is produced by combustion equipment, such as heating systems, as a result of insufficient ventilation and poses a risk to humans.

Ergonomics that makes your work easier

Once you've held it, you won't want to put the explosion-proof and IP65-protected device down. Thanks to the non-slip rubberised housing it fits securely in the hand. The high-contrast screen boasts a razor-sharp display and can be easily read even in sunlight. You can quickly access all device functions via the handy 4-key control panel (2 arrow keys, menu key, Enter key). The separate on/off key does not perform any other function.

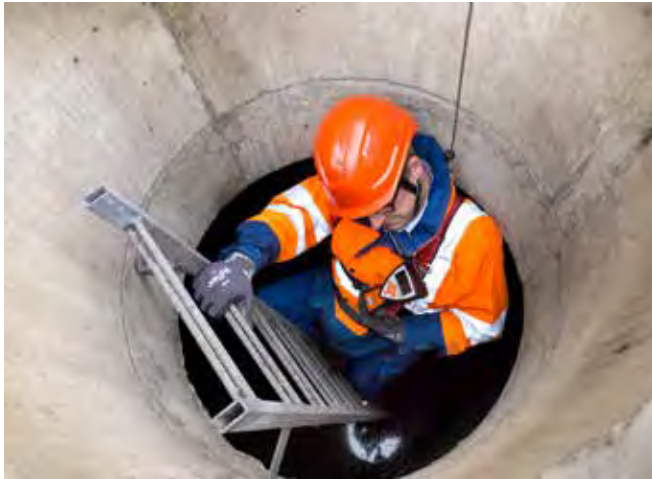


Simply choose the right device for your application

The **EX-TEC® PM 5xx** gas measuring and gas warning devices detect up to five different gases when fitted with all extras. Thanks to their modular design, you can tailor the device features exactly to your application.

Application (sensor)	EX-TEC® PM 580	EX-TEC® PM 550	EX-TEC® PM 500
Warning - methane (IR) - carbon dioxide (IR) - carbon monoxide (EC) - hydrogen sulphide (EC) - oxygen (EC)	yes - essential* - optional**	yes - essential* - optional**	yes - essential* - optional**
Measuring - methane (IR) - oxygen (EC)	yes - essential* - optional**	yes - essential* - optional**	not possible
Structure - methane (SC) - methane (IR) - carbon monoxide (EC)	yes - standard - essential* - optional**	not possible	not possible

IR: infrared sensor; EC: electrochemical sensor; SC: semiconductor sensor
 * The basic device essentially requires an IR sensor (CH₄ or CH₄/CO₂)
 ** Specify when ordering



Advantages of the **EX-TEC® PM 580 • 550 • 500**

- **Intelligent assistance with device inspection wizard**
- **2.5" display can be easily read in every environment:** vivid, high-contrast, razor-sharp, with backlight
- **Very user-friendly:** simple navigation using four keys and clear menu structure for all applications
- **Genuine one-hand operation:** suitable for right- and left-handed use
- **Handy device:** non-slip housing fits securely in the hand
- Transparent seal on easy to replace dust filter means that **filter contamination is spotted quickly**
- **Protection from pump alarm** if hydrophobic filter comes into **contact with water**
- **Detects up to five different gases** when all extras are fitted
- **Practical handling** thanks to short probe and belt clip
- **Audible and visual pre-alarm and main alarm** when gas concentration is dangerous
- **Flexible power supply:** AA-size rechargeable or disposable batteries

Certified passive* and active** explosion protection	
TÜV 17 ATEX 171969 X IECEX TUN 17.0027 X	EU type-examination certificate IECEX
II2G Ex ia db eb IIC T4 Gb	when using battery holder PM05-B0300
BVS 19 ATEX G 002 X PFG 19 G 004 X	Measuring function certified for methane (CH ₄), propane (C ₃ H ₈) Measuring function certified for oxygen (O ₂)

* Passive explosion protection: EU type-examination certificate confirms that the **EX-TEC® PM 580 • 550 • 500** does not constitute an ignition source

** Active explosion protection: gas warning device warns of explosive gas in the room

Accessories for greater flexibility

All gas measuring and gas warning devices from the **EX-TEC® PM 5xx** series come factory-fitted with the handy short probe. Various probes allow optimal customisation to your requirements.



- **SPE AutoFlow test set** makes compulsory device inspections easier and reduces test gas consumption
- **HG5 L-BOXX case:** everything neatly laid out in its place
- **Automatic test station ATS 503/ATS 501** provides accurate measurement values (available soon)
- **Powerful GasCom software:** easily read out recorded measurement values and extensive device configuration

Technical data



- **Dimensions (W × D × H):** approx. 93 × 47 × 165 mm, approx. 93 × 65 × 165 mm including belt clip
- **Weight:** depends on sensors fitted,
 - approx. 500 g
 - approx. 523 g incl. belt clip
- **Protection rating:** IP65
- **Power supply:** 3 cells (AA), either
 - rechargeable batteries (NiMH) 2500 mAh
 - disposable batteries (alkaline)
- **Operating time:** at 25 °C, depends on product version and application
 - **EX-TEC® PM 580 • 550 • 500,** Warning application: 16 hrs
 - **EX-TEC® PM 580 • 550,** Measuring application: 11 hrs
 - **EX-TEC® PM 580,** Structure application: 8 hrs
 These times only apply if no alarm is triggered during operation.
- **Battery charging time:** approx. 5 hours (full charge) at 2500 mAh
- **Charging voltage:** 12 V DC (max. 300 mA)
- **Operating temperature:** -20 – 40 °C
- **Storage temperature:** -25 – 60 °C without EC sensor
-25 – 40 °C with EC sensor
- **Atmospheric pressure:** 700 – 1200 hPa
- **Permissible relative humidity:** 5 – 95 % r.h., non-condensing
- **Display:** monochromatic TFT display, 380 × 224 pixels, size 56 x 33 mm
- **Pump capacity:** vacuum: > 150 mbar
volume flow: > 10 l/h

Please contact us for a comprehensive quotation, including additional technical specifications and information on accessories.

Service van EURO-INDEX

EURO-INDEX verleent service op alle meetinstrumenten uit haar leveringspakket en biedt de faciliteiten, kennis en hoog gekwalificeerd personeel voor (preventief) onderhoud, reparatie en kalibratie van uw meetinstrumenten.

Geautoriseerd Service Centrum

EURO-INDEX is van alle vertegenwoordigde merken een Geautoriseerd Service Centrum.

Dit betekent dat uw instrumenten worden behandeld door goed opgeleid en kundig personeel, dat beschikt over de juiste gereedschappen en software. Er worden uitsluitend originele onderdelen gebruikt en de garantie van uw instrument, evenals de certificering (ATEX, EN50379, etc.) blijven intact.

Service- en kalibratielaboratorium

EURO-INDEX beschikt over een bijzonder modern service- en kalibratielaboratorium met RvA accreditatie naar NEN-EN-ISO/IEC 17025. Deze accreditatie geldt voor verschillende grootheden, zoals gespecificeerd in de scope bij accreditatienummer K105.



KWS®

KWS is een uniek servicesysteem voor uw meetinstrumenten met periodiek onderhoud en kalibratie. Veel zaken worden voor u geregeld, zodat u zonder zorgen gebruik kunt maken van uw meetinstrumenten. De kosten zijn laag en voorspelbaar.

Digitale toegang tot uw kalibratiecertificaten met Mijn KWS

Via het Mijn KWS webportal heeft u altijd en overal toegang tot uw kalibratiecertificaten en gerelateerde documenten.

Verhuur van meetinstrumenten

- Uitgebreid assortiment
- Deskundig advies
- Instrumenten worden geleverd met accessoirepakket en herleidbaar kalibratiecertificaat

EURO-INDEX Academy

- Producttrainingen (individueel en klassikaal)
- Seminars
- Demonstratie- en instructievideo's

Bekijk de video op ons YouTube kanaal en ontdek alles over KWS



Servicebalie



Kalibratie rookgasanalyse



Seminars en workshops



Kalibratie thermografie

Wijzigingen voorbehouden EURO-INDEX® VL 18001

Het Bluetooth® woord- en beeldmerk zijn eigendom van Bluetooth SIG, Inc. Gebruik van deze merken door EURO-INDEX geschiedt onder licentie.



BELGIË
Leuvensesteenweg 607
1930 Zaventem
T: 02 - 757 92 44
F: 02 - 757 92 64
info@euro-index.be
www.euro-index.be

NEDERLAND
Rivium 2e straat 12
2909 LG Capelle a/d IJssel
T: +31 - (0)10 - 2 888 000
F: +31 - (0)10 - 2 888 010
verkoop@euro-index.nl
www.euro-index.nl

