

Alarm terminal MC92



The MC92 Alarm terminal is suitable for use over LTE with fallback to UMTS, EDGE and GSM.

Using classical AT commands, e.g. sending of short messages via SMS, HTTP(S), MQTT or E-mails via SMTP can be accomplished.

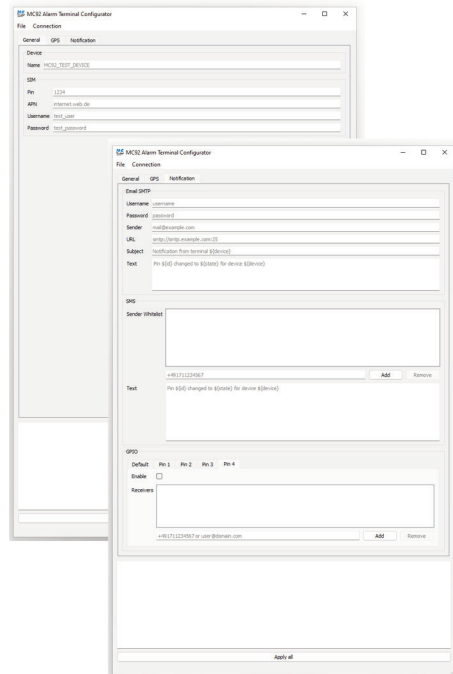
In addition, it has the possibility to react to status information via inputs and outputs.

One application example is alarm management for technical installations:

The MC92 Alarm terminal is a cost-effective solution for detecting faults. It can monitor the operating status of equipment and send alarms as well as commands (such as an emergency shutdown).

Key features & functionalities:

- Alarm terminal with mobile 4G LTE modem
- Quectel EC21-E module integrated
- Integrated RTC (real time clock)
- Metal housing
- Industrial platform
- Easy Configuration via MC Configurator



4G LTE



RS232



2in/2out or 4in



RS485 (optional instead of RS232)



USB 2.0 (optional)



GPS/GNSS (optional)



Integrated real time clock

Technical Data

MC92 Alarm terminal

Product	MC92	
Model	Alarm Terminal	
General	Description	
Type	Wireless 4G LTE Cat 1 terminal with UMTS, GSM EDGE Fallback	x
Dimensions (W x H x D)	44 x 105 x 84mm	x
Weight	270g	x
Supply voltage	8 to 30V DC	x
Operation temperature	-10°C to +60°C	x
Housing	Aluminium	x
Protection class	IP40	x
Mounting	Tabeltop / DIN rail	x
Wireless module embedded	Quectel EC21-E	x
Mobile		
Supporting networks	LTE FDD: B1/B3/B5/B7/B8/B20 HSDPA/HSUPA/HSPA+ (3G): Band 1,5,8, all bands with diversity GSM/GPRS/EDGE (2G): Band 3,8	x
Transmission rates LTE	Up to 5 Mbps uplink and 10 Mbps downlink	x
Transmission rates HSPA+	Up to 5.76 Mbps uplink and 21.6 Mbps downlink	x
Transmission rates EDGE	Up to 236.8 kbps uplink and 236.8 kbps downlink	x
Transmission rates GPRS	Up to 85.6 kbps uplink and 85.6 kbps downlink	x
Antenna connections	SMA (female)	1
Interfaces controller board (sides)		
USB	USB 2.0 Type A	Optional
GPIO	2in + 2out or 4in	x
RS232	DB9 (RX,TX,RTS,CTS)	1
RS485	Plug-in screw-type terminal; optional instead of RS232	1
Power	Plug-in screw-type terminal	1
LED NET	LTE (always on)	x
LED1-4	Free programmable	x
LED PWR	Power	x
GPS	GPS/GNSS	Optional
SIM	Mini SIM	x
Other properties		
Configurations	Configuration via MC Configurator (Configurator package on request)	x
RTC (Real Time Clock)	Integrated, buffered	x
Approval	CE	x
Delivery includes	Description	
Top-hat rail holder	DIN rail	x
Printed documentation	Quick Guide	x

Mistakes and changes are reserved.

Variants/Accessories

MC92 Alarm terminal

Variants	Part-Number
MC92 Alarm terminal 2in + 2 out	162504
MC92 Alarm terminal 4in	162507
MC92 Alarm terminal 2in + 2 out with USB	162505
MC92 Alarm terminal 4in with USB	162508
MC92 Alarm terminal 2in + 2 out with USB + GPS	162506
MC92 Alarm terminal 4in with USB + GPS	162509

Accessories	Part-Number
Power supply 12VDC with Phoenix connector	100909
Top-hat rail power supply, EU approval, Input: 100 - 240 VAC, Output 24 VDC / 1.0A	100877
Serial data cable RS232 Sub D9 (female) with 3pin plug, 1 m	162500
Portable antenna, GSM/UMTS/WLAN/LTE, bendable, 163 x 22 x 7 mm, SMA (male)	101292
Portable LTE-MIMO antenna, desk/window mount, GSM/UMTS/LTE, 2 x 2m RG174 SMA (male), 137 x 151 mm	101268
Magnetic base antenna, GSM/UMTS/LTE, 3 m RG174 SMA (male), Ø 31 x 72 mm	101296
Omnidirectional antenna, wall mounting (indoor/outdoor), GSM/ISM/UMTS/LTE, length 269 mm, 5m CFD195 low loss SMA (male)	100966
Omnidirectional antenna, screw mounting, GSM/GPS/UMTS/LTE, 2 x 3 m RG174 SMA (male), Ø 81.3 x 14.6 mm	101033