



# Biotope

Enriching estates  
with living walls;  
Canary Wharf



**AWARD  
WINNER  
2022**



# Canary Wharf Urban Greening

 **Client:** Canary Wharf Group

 **Installation:** 2021, 2022

 **Living Wall System:** PlantBox

In 2021 Canary Wharf Management started an ambitious urban greening project designed to reconnect people with nature and help transition the area from a Monday to Friday work zone into a seven day a week live, work, play destination.

Landscape Architect Gillespies drew up an ambitious masterplan including pocket parks and additional green spaces across the Estate. Biotope were appointed to design and deliver multiple living walls to help bring the vision to life. These were installed in phases throughout 2021 and 2022.

Using our freestanding, stackable and modular system we were able to deliver a big impact within a short timeframe.



Phase One Urban Greening Plan; Gillespies



## Enriched Public Realm

This project was designed to bring nature back into Canary Wharf – Living walls have been proven to reduce stress and improve wellbeing.



## Biodiversity Net Gain

Living walls provide green corridors and habitats for insects, contributing to stronger ecosystems.



## Better air quality

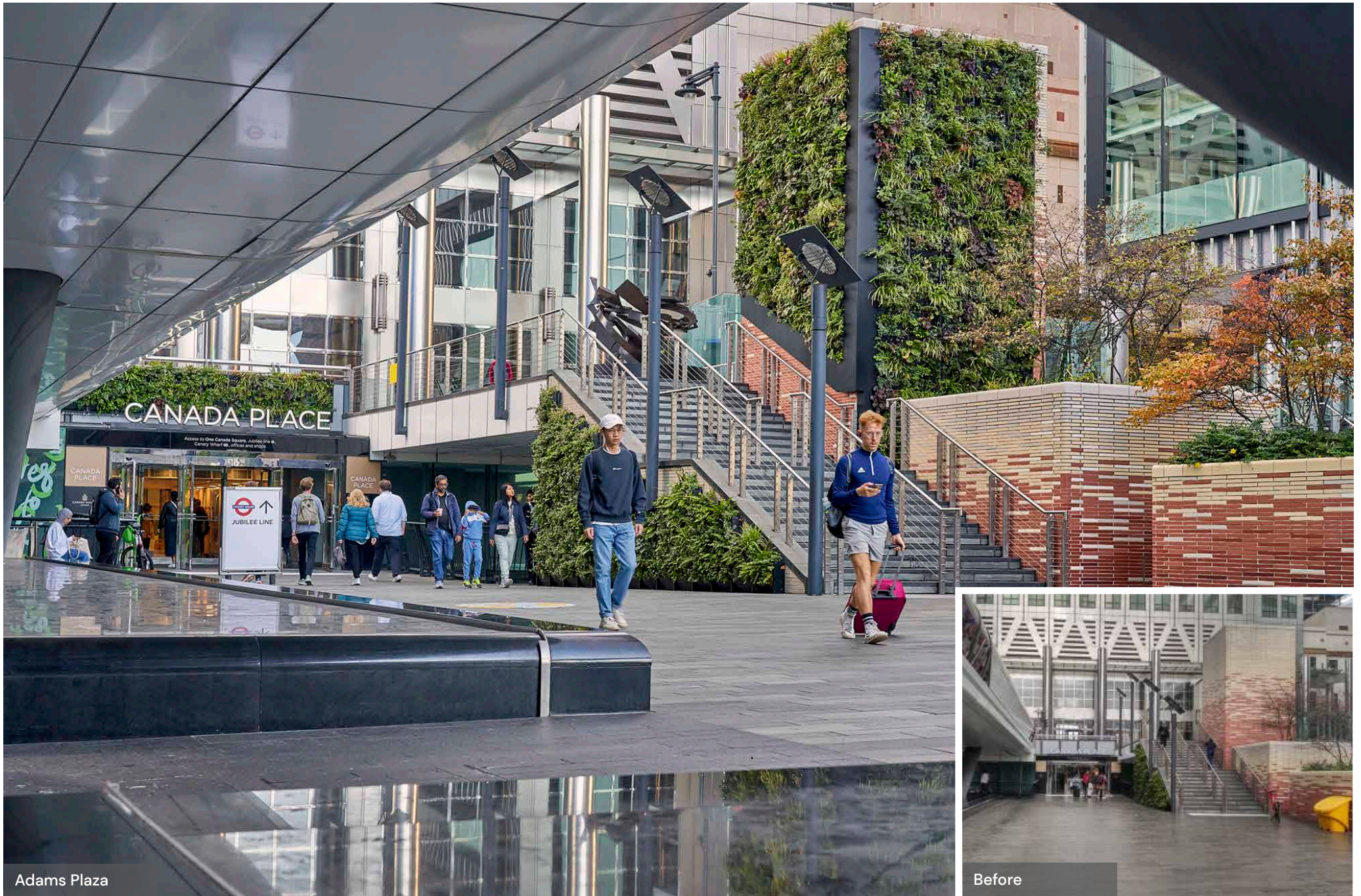
Plants absorb CO<sup>2</sup> and other pollutants. Their leaves also intercept suspended particulate matter helping to improve local air quality



## Support the circular economy

This modular, stackable living wall system can be dismantled and re-located in the future





Adams Plaza

Before



## Client Aspirations

Over the last 20 years London's Canary Wharf Estate has transformed from a derelict dockland into a thriving business centre and lifestyle destination.

Canary Wharf Group (CWG), who own and run the Canary Wharf estate, understand that the world can't become sustainable unless cities start working with nature and they are working hard to play their part.

CWG has an ambition to use the Estate as a living test bed, creating places where nature and people can thrive together.

Biotope were commissioned to contribute to that vision by delivering a number of living walls across the Canary Wharf estate to enrich the public realm and create a pleasant and relaxing environment for workers, residents, and visitors. The living walls at Canary Wharf will also help to improve air quality, attenuate rainwater, and increase Biodiversity.

## Project highlights



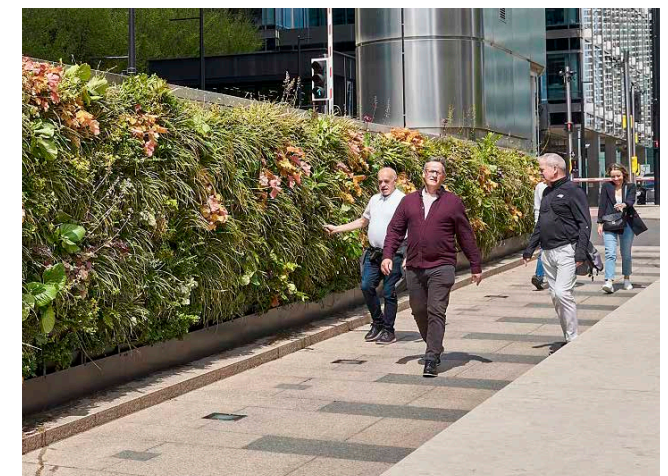
Freestanding, stackable and modular PlantBox system



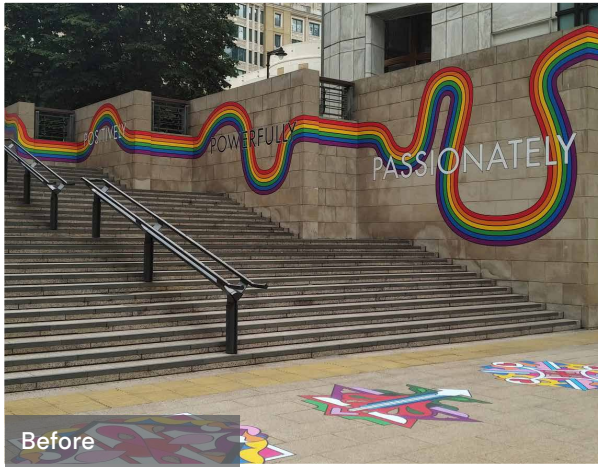
Only required restraint fixings to the existing structure



Fast delivery – Phase one was completed within 8 weeks of the initial visit









## Our Approach

### Engagement

Canary Wharf Group appointed Landscape Architect Gillespies in 2021 to create a landscape framework for a large programme of landscaping works across the Estate.

Working in collaboration with Biotecture and Willerby Landscapes, Gillespies established a vision and toolkit for each area including modular timber furniture, planters and green walls based on the site's location, character, climate and usage. The scheme was designed to enhance biodiversity, improve wellbeing and create enlivened spaces.

Canary Wharf Management then appointed Biotecture directly to design and install the living wall elements in six prominent locations across the estate.

After the successful completion of phase one, Canary Wharf management commissioned Biotecture to transform additional areas near the new Elizabeth line station. The client wanted to create a great first impression for visitors at this important new gateway to the district and provide new spaces for people to relax and reconnect with nature.



Visual created by Landscape Architect Gillespies

### With you from start to finish



#### Design

Biotecture worked with CWG to design the PlantBox living walls across the estate



#### Horticulture

The living walls were planted up in our nursery before being transported to site



#### Installation

PlantBox is modular and easy to install. Our fully trained team installed the walls over several weeks



#### Maintenance

Our expert maintenance team have an ongoing contract to keep the living walls looking their best





Before



Biotope's living walls have transformed a stretch of facade alongside the new Elizabeth Line station



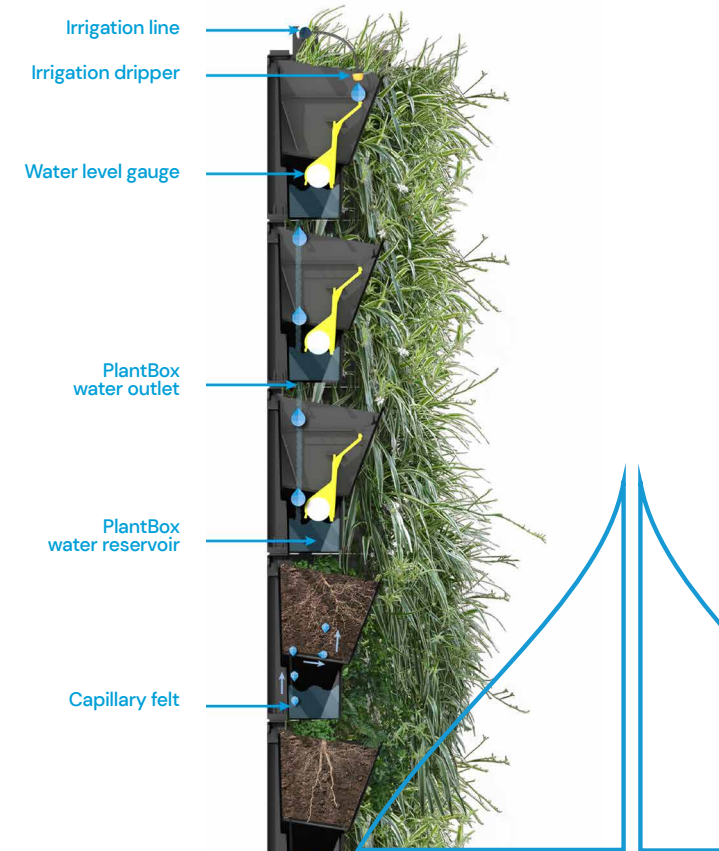
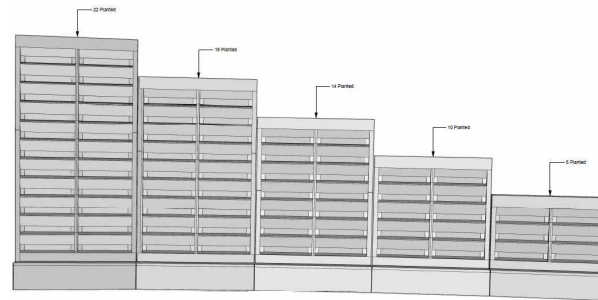
## Design and Project Management

The living walls were designed using our PlantBox system, which is freestanding, stackable and modular. Our project team created visualisations to ensure the client fully understood our proposals and what we could achieve.

Setting out drawings for each area were created and planting palette diagrams for our nursery and installation teams to follow.

The planting was designed to create a vibrant, natural feel while maximising ecological benefit and resilience to climate change. Plant species have been considered and combined to ensure seasonal and visual interest through form, colour, movement, and texture. The palette at each location has been shaped by specific conditions to create a distinct character and establish plant communities that are biodiverse, robust and well suited to their environment.

Our project management team worked with the client to ensure that the living walls were delivered to suit the overall site programme.



### Benefits of PlantBox



stackable,  
and modular



Easy to install,  
dismantle and  
re-assemble



Made in the  
UK from  
100% with  
recycled  
materials



Only requires  
restraint fixings



## ● Horticulture

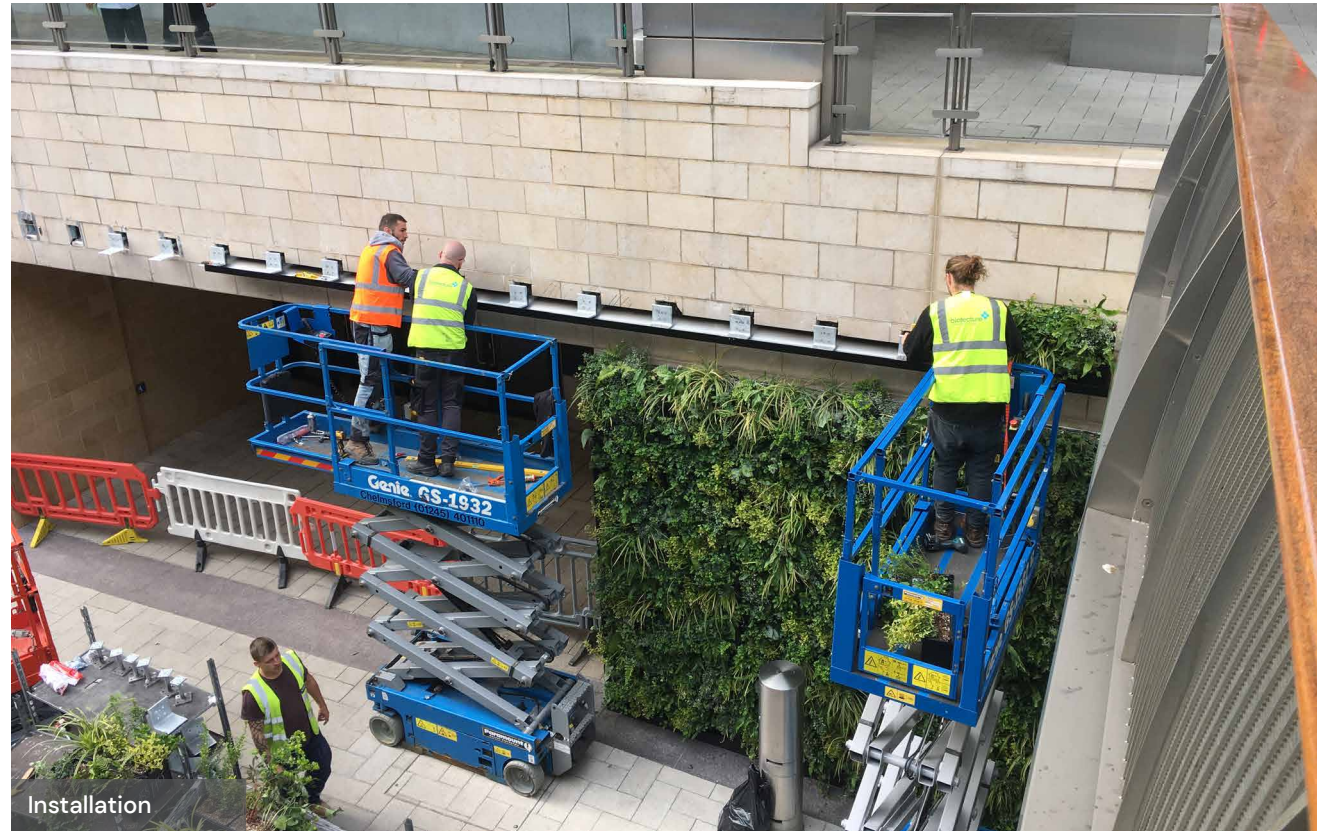
The PlantBox troughs were planted up in our nursery before being installed on site in several phases. This ensured the living walls looked great from day one.

## ● Installation

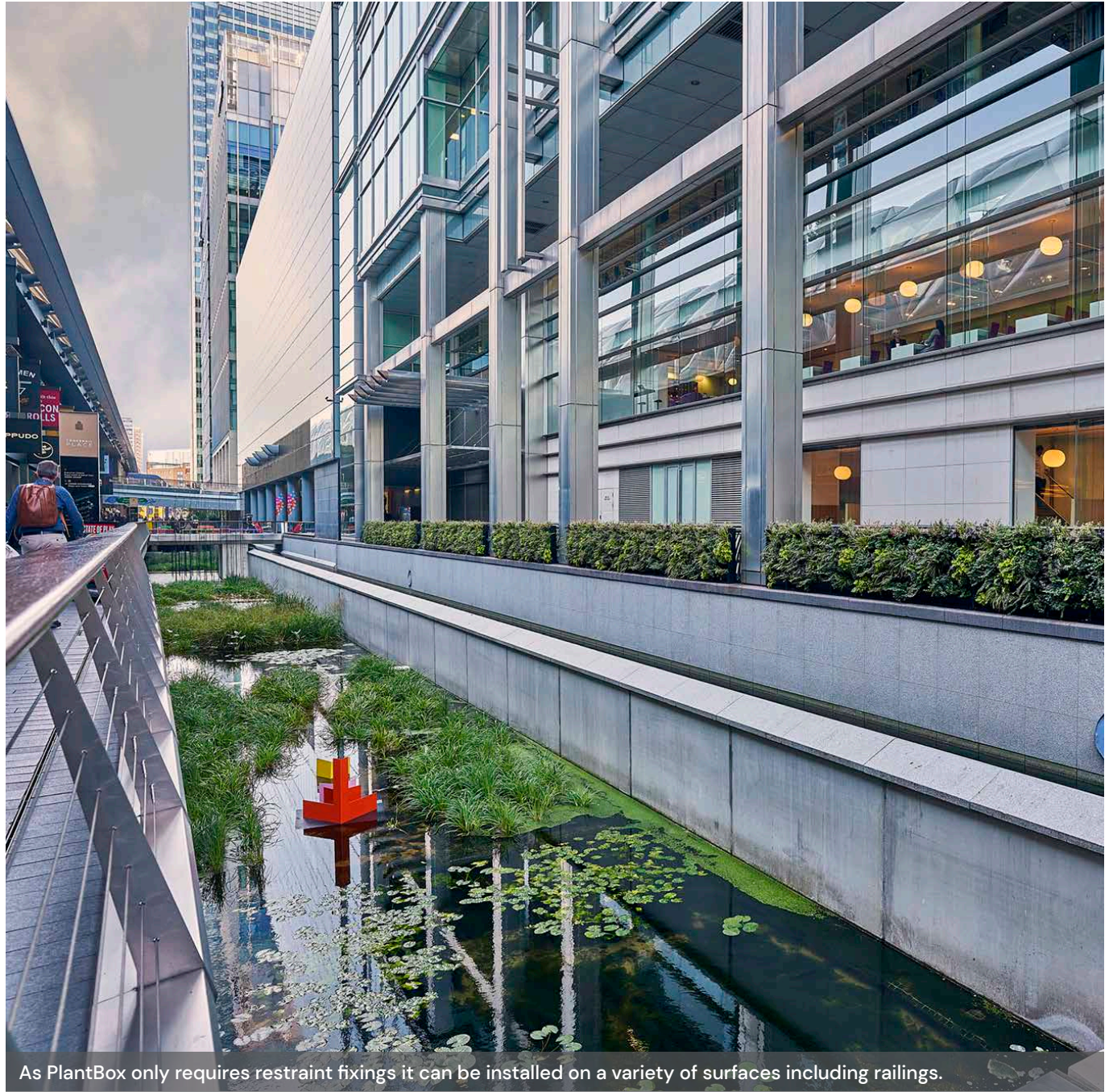
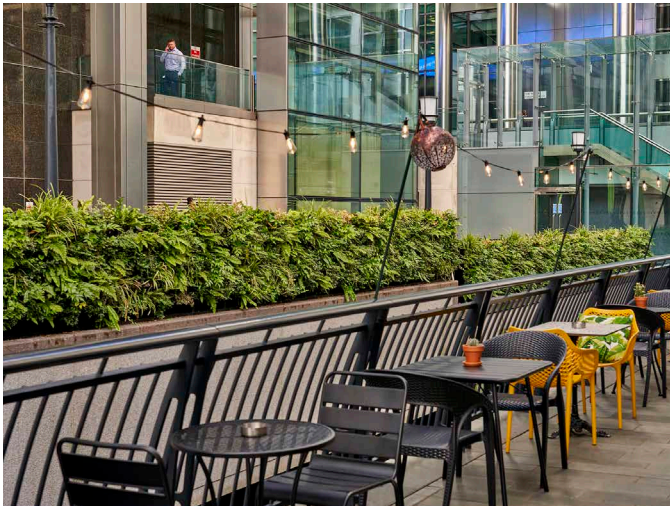
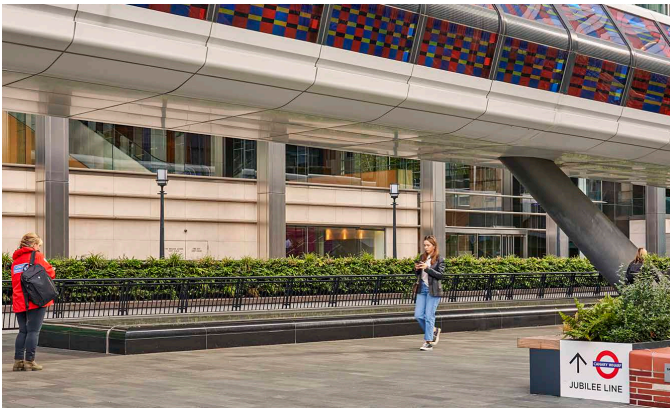
PlantBox could not be simpler to install, with each trough easily clicking and stacking together vertically, and clipping together horizontally to fit any space. It can be installed up to 8 metres in height.

The PlantBox system is loadbearing and only requires restraint fixings, this meant that the living walls at Canary Wharf didn't need structural approval which allowed us to offer a fast turnaround.

All our install teams are fully trained and certified. We are affiliated to a number of safety bodies and we carry out regular internal and external safety and environmental audits.







As PlantBox only requires restraint fixings it can be installed on a variety of surfaces including railings.

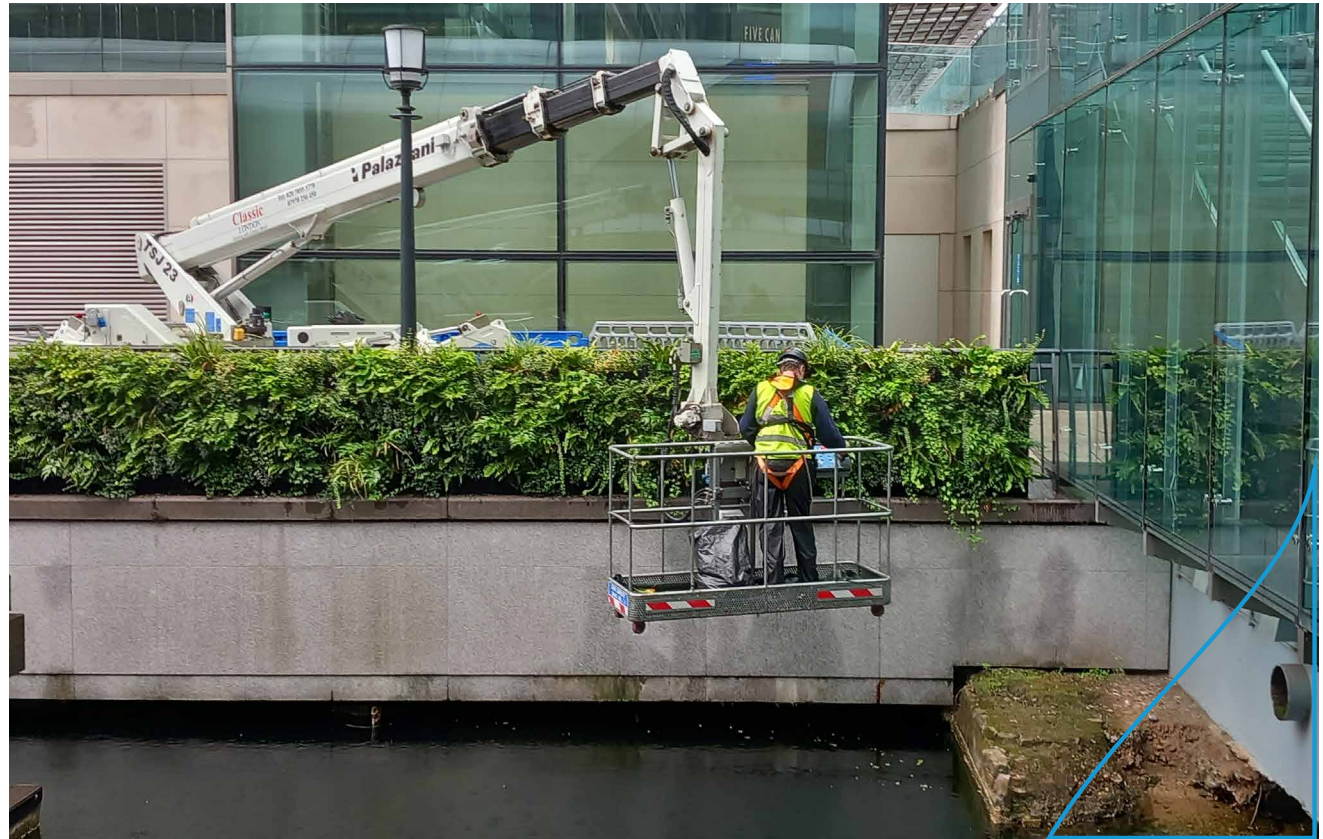


## ● Maintenance

Canary Wharf Management appointed Biotope to carry out ongoing maintenance. Our expert horticultural team carry out regular inspections and horticultural visits to keep the living walls looking their best.

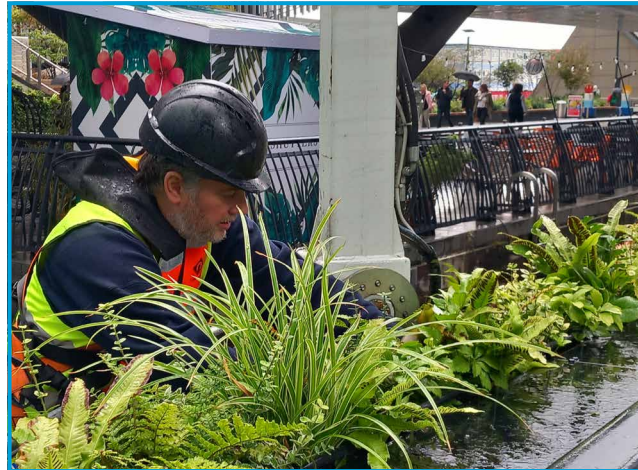
Each PlantBox trough has a 1.8L water reservoir and capillary felt allows plants to draw up the water they need. The cascading overflow system allows the walls to be watered easily and avoids the risk of overwatering and water wastage. On larger projects irrigation systems can be integrated.

We installed living walls across the Canary Wharf estate, and each location has different access requirements. We work closely with the client's landscape team to ensure the work is carried out safely with minimal disruption to passersby.



## ● Future Flexibility

As a modular system PlantBox can be extended, reconfigured or moved allowing flexibility for the future. Biotope are also working on a design for biodiversity boxes which can be retrofitted into the living walls which will help clients contribute to biodiversity net gain.



Integrated  
water  
reservoir



Overflow  
watering  
system

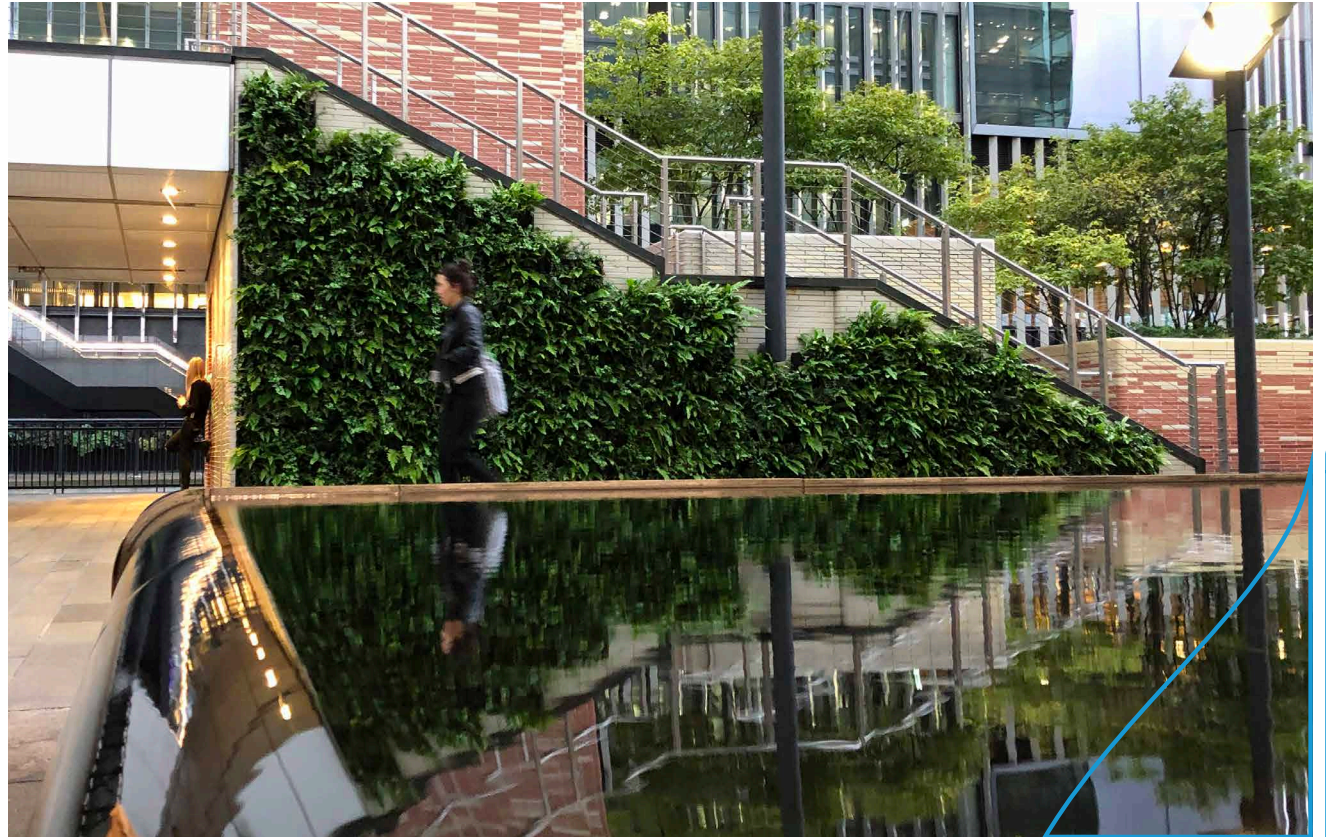
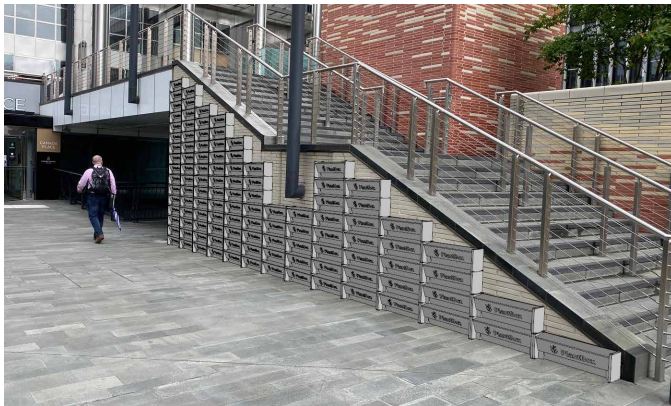
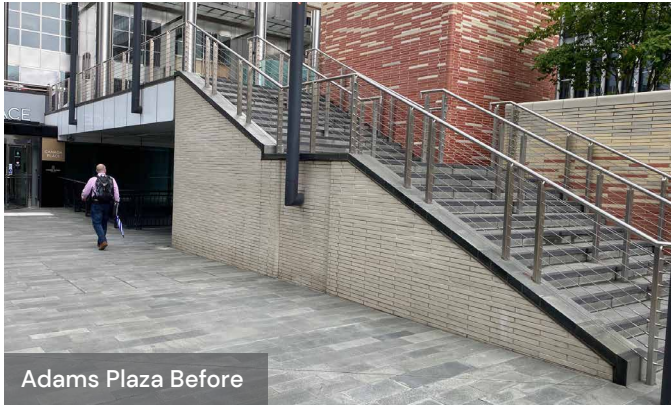


Tells you  
when  
to top up









All works by Biotecture were completed in a professional and timely manner and we are extremely pleased with the final results and we have had so much positive feedback from colleagues' and Tenants'. Thanks for a great job.

Paul Griffiths, Landscape Manager, Canary Wharf Group





+44 (0) 1243 573 118  
[enquiries@biotecture.uk.com](mailto:enquiries@biotecture.uk.com)

[www.biotecture.uk.com](http://www.biotecture.uk.com)

**Head Office:**

Unit 12, Broadbridge Business Centre  
Bosham, West Sussex  
PO18 8NF

**London Office:**

Unit 5, Coach House Mews  
217 Long Lane  
London  
SE1 4PR

