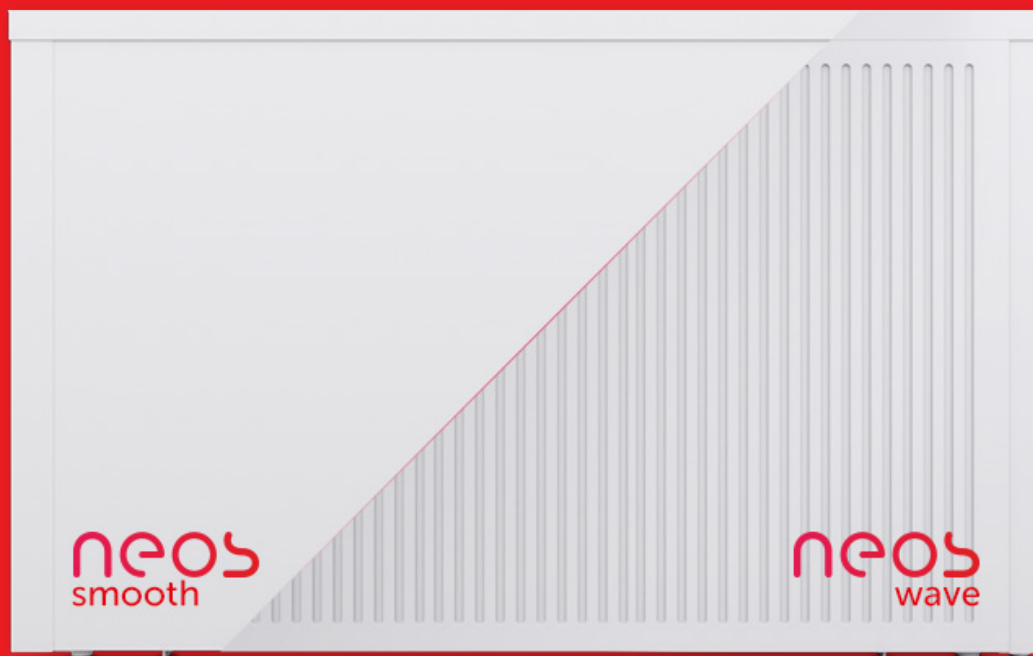




User Manual



trust
heating for humans

Contents

- 1 Important information - p3
- 2 Safety - p4
- 3 Cleaning - p6
- 4 Aftersales service - p7
- 5 Radiators installation - p8
- 6 Electrical installation - p12
- 7 Radiator operating instructions - p13
- 8 Thermostat operation - p14
- 9 Guarantees - p17
- 10 Specifications - p18



IMPORTANT INFORMATION:

These instructions should be read thoroughly and retained for future reference. Please also read and be aware of the information presented on the appliance

WARNING: DO NOT USE THIS HEATER IN THE IMMEDIATE SURROUNDINGS OF A BATH, SHOWER OR SWIMMING POOL OR ANY WATER SOURCE.

If the heater is installed in a room containing a bath or shower, it must be installed so that switches and other controls cannot be touched by a person using a bath or shower.

NOTE: If the appliance is supplied without an integral thermostat then it should not be fitted in small rooms occupied by persons incapable of leaving the room unassisted.

DO NOT USE THE APPLIANCE IF THE SUPPLY CORD IS DAMAGED.

Immediately switch off at the supply and seek professional advice. It must be replaced by the manufacturer, its service agent or similarly qualified person. There are **NO** customer serviceable parts within this product. Repairs must be made by a suitably qualified individual to avoid a potential hazard.

DO NOT locate the heater immediately below a fixed socket outlet or connection box.

DO NOT sit on or stand on the radiator, or place objects in contact with the heater.

2. SAFETY:

IT IS VITAL THAT ALL THE FOLLOWING SAFETY INSTRUCTIONS ARE FOLLOWED EXACTLY.

WARNING:



To avoid overheating, do not cover the radiator or drape clothes over to dry. Any restriction to the flow of air through the radiator will cause an increase in surface temperature. Due care and consideration must be taken when choosing the site for the heater to ensure curtains or furniture do not obstruct air circulation. Consideration should be made when using this heater with the automatic program controller as the appliance will switch on automatically and if covered or displaced there may be an increased fire risk.

ATTENTION:

THE SURFACE OF THIS HEATER CAN BE HOT.



Some parts of the product can get very hot and may cause burns. Take special care if children and persons requiring supervision are present. During initial operation, there can be various odours due to materials used in manufacture. This is normal and will disappear after a short period of use, however, it is advisable to keep the room well ventilated.

HEAVY:

The radiator is heavy and must be securely fixed to a sound wall. If the appliance is to be removed from its fixings for any purpose it should be done by at least two people and great care should be taken when lifting

CHILDREN:



This appliance can be operated by children over 8 years and persons with reduced physical, sensory or mental capabilities, or lack of experience and knowledge, providing they have been given adequate instruction or are supervised by a responsible person.

Children should be supervised to ensure that they do not play with the appliance.

CHILDREN OF LESS THAN 3 YEARS SHOULD BE KEPT AWAY UNLESS CONTINUOUSLY SUPERVISED.

Children aged from 3 years and less than 8 years should only be allowed to operate the appliance under supervision or after being given instruction concerning use of the appliance in a safe way and understand the hazards involved. Children aged from 3 years and less than 8 years should not regulate and clean the appliance or perform user maintenance.

3. CLEANING:

To maintain the external appearance of the heater it need only be wiped over occasionally with a dry duster. During the summer months, or at other times when the appliance is not in use and is completely cold, the opportunity should be taken to wipe over with a damp cloth. Due to the convection process there can be a build-up of dust below and at the back of the radiator. This can be removed by vacuuming or dusting regularly.

DO NOT USE ABRASIVE CLEANING POWDERS OR FURNITURE POLISH.

Discolouration of wall finishes can sometimes occur immediately above a heater due to the convection process and the properties of some paints and decorating materials as well as the presence of environmental impurities in the air (such as soot, smoking or incense generated from the burning of candles, etc.).

4. AFTER SALE SERVICE:

The tungsten and soapstone elements of your product are guaranteed for 10 years from the date of purchase. The electronic parts are guaranteed for a period of 3 years. During this period, we undertake to repair this product free of charge provided it has been installed and operated in accordance with these instructions. Please see T's & C's as a callout charge will be applicable. In the unlikely event of a fault developing on the product, do not attempt to repair or remove the product as this could invalidate the guarantee. Contact the After Sales Department on 0800 5999 109 to arrange a visit by an engineer.

ACCIDENTAL DAMAGE:

ACCIDENTAL DAMAGE IS NOT COVERED UNDER THE WARRANTY.

PLEASE NOTE: In the event of a product fault being caused by factors other than product failure or installation error, the company reserve the right to charge for a call out and time on site. The cost of any further work required to fully rectify the problem will be subject to acceptance of a written quotation.

ATTENTION:

Electrical appliances contain pollutants. The equipment should be disposed of safely and in line with local disposal and recycling regulations. DO NOT attempt to disassemble or remove any part of the product. Please retain your receipt as proof of purchase. Your rights under this guarantee are additional to your statutory rights, which in turn are not affected by this guarantee.



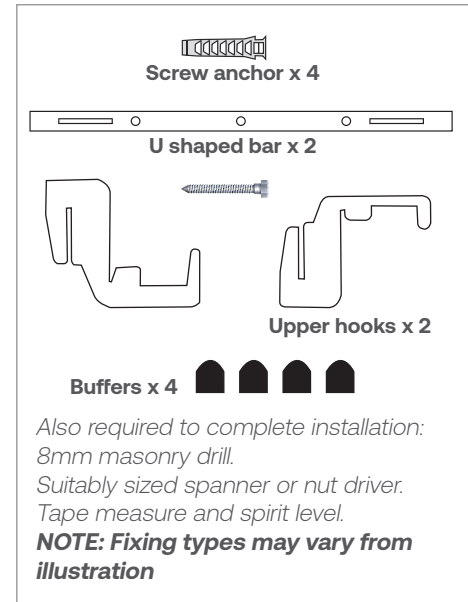
5. RADIATOR INSTALLATION:

- Carefully lay the radiator down on its side, ensuring the radiator is flat and fully supported along its length. DO NOT lay on a table or other elevated position.
- Open packaging carefully. Do not use sharp tools as this could mark the radiator.
- Remove the fittings from the side panel and ensure all parts are included.
- Carefully remove the top panel and lay aside for refitting later.

NOTE: The screw anchors supplied are designed for installation into block or brick walls. If the wall structure differs from this, or you are unsure, contact the Technical Department for advice.

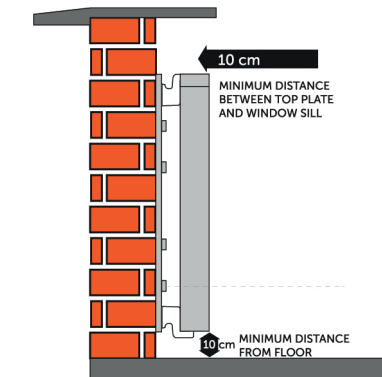
CHOICE OF FIXING POSITION:

It is recommended that the radiator is installed under a window or on an outside wall of the room. As an alternative the installation can be to an inside wall, but this position may result in an uneven heatdistribution within the room. DO NOT locate the heater immediately below a fixed socket outlet or connection box.



Consideration should also be given to the available electrical supply to the radiator. The position should be within a reasonable distance of a suitable rated power source and should not cover or impede access to any existing socket or junction box. There should be at least 30cm (12") clearance above the radiator to any electrical installation. The radiator is supplied with the power on the same side as the thermostat.

Prior to drilling holes in the wall at the chosen fixing position, check for electrical wiring, gas and/or water pipes immediately behind the fixing points.

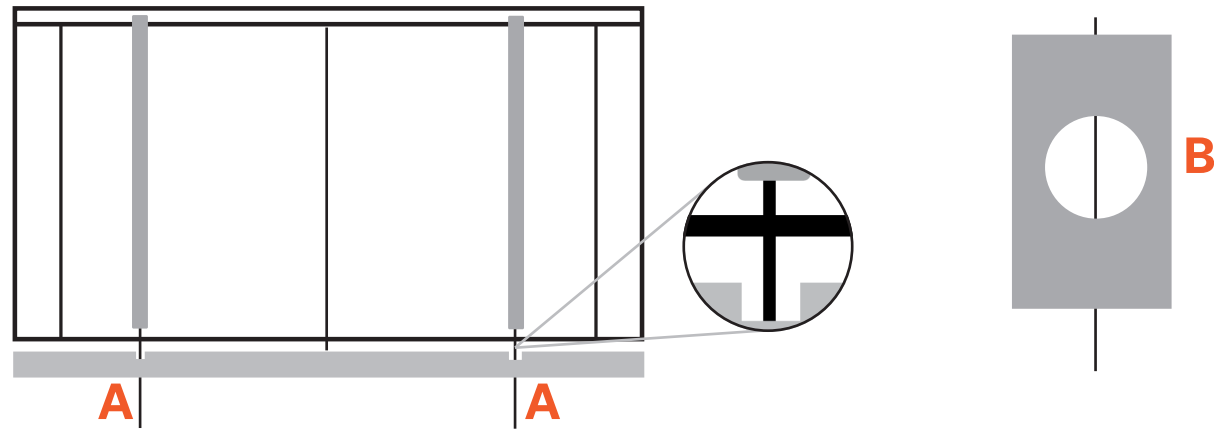


- The radiator should be fitted at a minimum distance of 20 cm (8") from the floor to the lowest fixing rail hole. This will give a minimum clearance of 10cm (4") to the lower edge of the radiator. Ensure a minimum clearance above the radiator of 10cm (4") to a window board or overhang. This is required to ensure proper air circulation.
- Always ensure a minimum distance of 75mm (3") to the sides to any adjacent fittings or furniture.
- Do not place furniture or other objects within 150mm (6") of the front panel of the appliance.

INSTALLATION OF THE SUPPORT BARS:

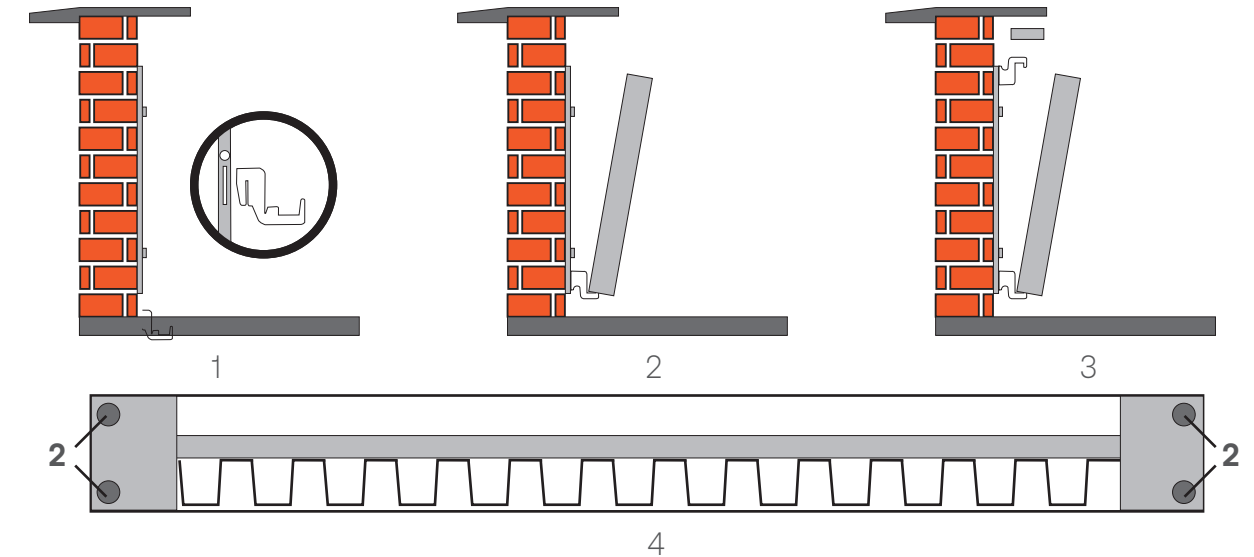
Remove the lid from the radiator. Turn the lid upside down and place it on top of the skirting board against the wall in the desired location. With a pencil, make two marks on the wall that match where the two notches (**A**) are located on the lid. Place a rail vertically (confirm it is vertical with a spirit level) with one side in the centre of the notch (see illustration). Mark a vertical line the full length of the rail. Repeat the process for the other rail.

Place the rail against the wall so the pencil line is visible through the holes (**B**). Mark the holes to be drilled.



FITTING THE RADIATOR TO THE SUPPORT BARS:

1. Install the enclosed wide bottom hooks securely into the lower slots in both support bars.
2. Lift the radiator carefully and place centrally onto the lower support hooks, ensuring the hooks engage securely and the ends are within the ribs of the radiator.
3. With the top of the radiator tilted away from the wall, place the slim upper hooks into the upper slots and move to the side. Move the top of the radiator slowly towards the wall, lifting the upper hooks and engaging these into the ribs at the top. Carefully replace the top panel to cover the fixings.
4. Add the 4 buffers to the top of the radiator.





6. ELECTRICAL INSTALLATION:

Following the fitting of the radiator to the fitting bars connection should be made to a suitable power supply.

THIS PRODUCT MUST BE INSTALLED BY A QUALIFIED ELECTRICIAN.

The mains supply cable must be connected to a double pole switched flex outlet, with a minimum 3mm separation, incorporated in the fixed wiring. The radiator should be installed in accordance with current local wiring rules.

CHANGING THE POWER SUPPLY ENTRY SIDE (IF REQUIRED):

The radiator is supplied with the power supply to the side specified on the order. If, on installation, this needs to be changed the radiator is fitted with a terminal block on the opposite side to allow this alteration.

7. RADIATOR OPERATING INSTRUCTIONS:

To operate the product, use the switch on the flex outlet to turn the radiator ON or OFF as required.

It is recommended that the radiator is controlled by a suitably rated (min 13A switching) thermostat conforming to current legislation.

Refer to the instructions supplied with the thermostat to provide suitable time and temperature settings.

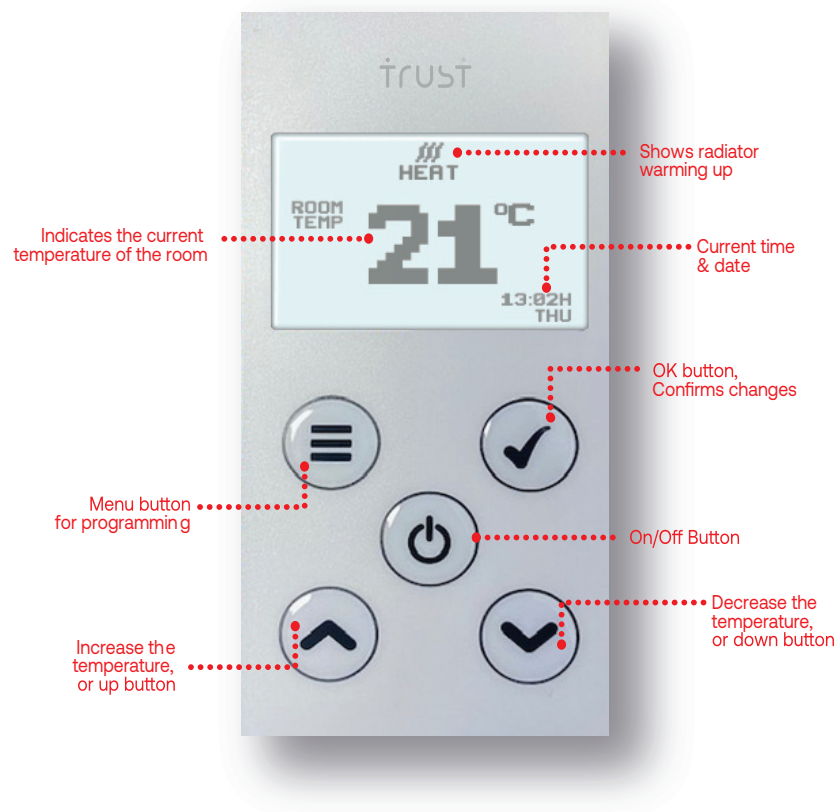
The surface temperature of the radiator should not exceed 70°C.

Please note that there are no consumer serviceable parts within the radiator.

DO NOT USE IF THE SUPPLY CABLE IS DAMAGED IN ANY WAY.

ADDITIONAL INFORMATION:

Any issues please call us on 0800 5999 109



8 THERMOSTAT OPERATION


Setting Date And Time

Press the menu button and hold for 3 seconds. 

The screen will show 3 options.

1. Set time
2. Timer settings
3. Options

Use the up  down  buttons to select **SET TIME** from the menu and then press the ok button. 

The screen will show **TIME SET** and the day will be flashing. Use the up and down keys to set the day and then press the okay button. Then, the screen then will flash time. Use the up and down keys to set the time and then press the ok button. 




PROGRAMMING TEMPERATURE Automatic Mode




You can set four different programs for each day or you can set the days of the week the same.

Press the menu button and hold for 3 seconds. 




The screen will show 3 options.




1. Set time
2. Timer settings
3. Options

Use the up  down  buttons to select **Timer settings** and then press the ok button.  The screen will then flash with: **mon, tue, wed, thur, fri, sat, sun.**

If you want to set the temperature & start / finish time the same for all the days of the week- press the ok button.  If you want to set every day to a different start and finish time use the up  down  button to select each day then press the ok button.

Program 1 will then be on the screen with the word **TIME** underneath.

Use the up  down  button to select the first time you would like the radiator to come on. Once you have the correct time then press ok. 

The word **TEMP** will then be on the screen - use the up  down  button to select the desired temperature. Then press ok. 

Once this has been completed it will ask you to then do the same for program 2, 3 & 4.

NOTE

When setting the four programme times/temperatures, the radiator will never actually turn off, only move to the next temperature setting. If you don't wish the radiator to come on, set the temperature to 5° (frost setting). This is as low as the radiator can go and is designed to protect the radiator and the property

OPTIMISATION MODE

This means the device calculates how long it takes the room to reach the desired temperature setting. For example, if you are wanting your room to be at 22 degrees from 08:00 the thermostat will calculate that due to the temperature in the room it may need to come on earlier or later to achieve 22 degrees for that time. If you want to use this feature press the menu button down for 3 seconds [icon] and scroll down to options, then press ok. The screen will now flash Optimise: ON or OFF. Select on and then press ok. [icon]

MANUAL MODE

If you require more heat or less heat when the program is on, manually use the up [icon] down [icon] arrows and then press ok. [icon] This will override your program setting for this period only.

If you require heat out of the pre-programmed settings, turn the heater on [icon] and use the up arrow [icon] to reach the desired temperature.

TO TURN OFF

To turn the thermostat off, hold the menu button [icon] for 5 seconds

For further assistance, please visit the link on our website www.trustelectricheating.co.uk/our-thermostats/ or call 0800 5999 109

9 WARRANTY CONDITIONS

We assume warranty for your electric storage heating from the date of installation and delivery, and once we have received payment in full in accordance with the following conditions. If the heating system is not working properly and to your satisfaction, please report it to the company immediately or at the nearest possible convenience. Conservatory Heating Company, 12 Elmfield Business Park, Lotherton Way, Garforth, Leeds, LS25 2JY 0800 5999 109

GUARANTEE COVERAGE:

During the period of guarantee we will eliminate all error functions, which are related to lack of design or material flaw. The repair will take place as far as possible on the spot. Normal wear and tear, wilful or negligent damage, damage caused by failure to comply with instructions or connection to improper AC voltage, are not covered by this guarantee.

Tungsten and soapstone elements

Warranty period for the tungsten and soapstone elements is for a period of 10 years.

25 year warranty

Electrical components relating to the ProtoStat

Warranty period for the electrical components relating to ProtoStat

5 year warranty

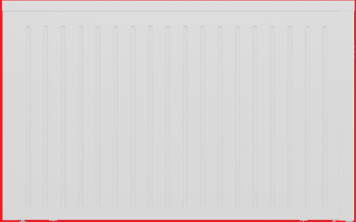
Date Supplied

10 SPECIFICATIONS

The Standard Range

Technical specifications	
Product Model Number	A800, A1000, A1600, A2000, A2500
Colour	Any RAL colour of choice (+15%)
Finish	Standard radiators come in white gloss (RAL 9003)
Controls	Four different thermostat options. Electronic user interface with LCD display offering room temperature setting, 7-day programmer, installer settings, four pre-set timer profiles and Lot 20 compliant. <div>1. Protostat: integrated thermostat</div> <div>2. Wireless Thermostat</div> <div>3. Bluetooth controlled</div> <div>4. App option available</div>
Design	Smooth or Wave
Heat Output (kW)	0.8-2.5
Heat source	20mm soapstone core with tungsten element
Installation	Fixed to the wall via wall fixing brackets
Location of Heat Output	80% top, 15% front, 5% rear
Warranty/Guarantee	25-year guarantee for the radiator 5-year guarantee for the thermostat *dependent on choice of thermostat
Thermostat	Yes, Lot 20 compliant and digital

Height (mm)	650
Depth (mm)	65
Width (mm)	440 - 1360
BEAB	Yes
CE	Yes
Number of energy cells	Between 4 - 16
Construction	Aluminium & Soapstone
Cable Exit Point	Right or Left
Connection	Flex Twin, Earth, 1.5mm
Electric Supply	13 Amp 240V
Element type	Tungsten
Loading/Wattage (kW)	800 -2500
Safety Cut Out	NC - 150° open, 130° reset
Construction	Aluminium, Zinc
Battery Back Up	Battery Cell, 12 month life



our standard range

Outputs and dimensions				
Model No.	Input/Output Rating +5%/-10%	Height	Depth	Length
A800	800	65cm	6.5cm	44cm
A1000	1000	65cm	6.5cm	71cm
A1600	1600	65cm	6.5cm	71cm
A2000	2000	65cm	6.5cm	101cm
A2500	2500	65cm	6.5cm	136cm

The Vertical Range

Technical specifications	
Product Model Number	MV1600, MV2000, MV2500
Colour	Any RAL colour of choice (+15%)
Finish	Standard radiators come in white gloss (RAL 9003)
Controls	Four different thermostat options. Electronic user interface with LCD display offering room temperature setting, 7-day programmer, installer settings, four pre-set timer profiles and Lot 20 compliant. <div> 1. Protostat: integrated thermostat 2. Wireless Thermostat 3. Bluetooth controlled 4. App option available </div>
Design	Smooth or Wave
Heat Output (kW)	1.6-2.5
Heat source	20mm soapstone core with tungsten element
Installation	Fixed to the wall via wall fixing brackets
Location of Heat Output	80% top, 15% front, 5% rear
Warranty/Guarantee	25-year guarantee for the radiator 5-year guarantee for the thermostat *dependent on choice of thermostat
Thermostat	Yes, Lot 20 compliant and digital

Height (mm)	1240
Depth (mm)	65
Width (mm)	440 - 710
BEAB	Yes
CE	Yes
Number of energy cells	Between 4 - 16
Construction	Aluminium & Soapstone
Cable Exit Point	Right or Left
Connection	Flex Twin, Earth, 1.5mm
Electric Supply	13 Amp 240V
Element type	Tungsten
Loading/Wattage (kW)	800 -2500
Safety Cut Out	NC - 150° open, 130° reset
Construction	Aluminium, Zinc
Battery Back Up	Battery Cell, 12 month life



ideal for the kitchen and slim walls

Outputs and dimensions				
Model No.	Input/Output Rating +5%/-10%H	eight	Depth	Length
M1600	1600	124cm	6.5cm	44cm
M2000	2000	124cm	6.5cm	71cm
M2500	2500	124cm	6.5cm	71cm

The Junior Range

Technical specifications	
Product Model Number	KJ1600, KJ2000, KJ2500
Colour	Any RAL colour of choice (+15%)
Finish	Standard radiators come in white gloss (RAL 9003)
Controls	<p>Four different thermostat options. Electronic user interface with LCD display offering room temperature setting, 7-day programmer, installer settings, four pre-set timer profiles and Lot 20 compliant.</p> <ol style="list-style-type: none"> 1. Protostat: integrated thermostat 2. Wireless Thermostat 3. Bluetooth controlled 4. App option available
Design	Smooth or Wave
Heat Output (kW)	1.6-2.5
Heat source	20mm soapstone core with tungsten element
Installation	Fixed to the wall via wall fixing brackets
Location of Heat Output	80% top, 15% front, 5% rear
Warranty/Guarantee	<p>25-year guarantee for the radiator</p> <p>5-year guarantee for the thermostat *dependent on choice of thermostat</p>
Thermostat	Yes, Lot 20 compliant and digital

Height (mm)	400
Depth (mm)	65
Width (mm)	1360 - 1650
BEAB	Yes
CE	Yes
Number of energy cells	Between 4 - 16
Construction	Aluminium & Soapstone
Cable Exit Point	Right or Left
Connection	Flex Twin, Earth, 1.5mm
Electric Supply	13 Amp 240V
Element type	Tungsten
Loading/Wattage (kW)	1600 - 2500
Safety Cut Out	NC - 150° open, 130° reset
Construction	Aluminium, Zinc
Battery Back Up	Battery Cell, 12 month life



perfect for under window cills
where wall space is limited

Outputs and dimensions				
Model No.	Input/Output Rating +5%/-10%	Height	Depth	Length
K1600	1600	40cm	6.5cm	136cm
K2000	2000	40cm	6.5cm	136cm
K2500	2500	40cm	6.5cm	165cm

Trust Electric Heating Ltd

Trust House, 12 Elmfield Business Park, Lotherton Way, Garforth, Leeds, LS25 2JY

Tel: 0800 5999109 Company Reg: 09019006 Vat Reg No: 187607667

Web: www.trustelectricheating.co.uk Email: info@trustelectricheating.co.uk

trust
heating for humans