



STEM learning & testing environment



Contents

Benefits for educators and students	4
Our courses	10
Sowiso in numbers	12
Why choose Sowiso?	13
Pricing	14
What our partners say about us	15

A smarter way to teach STEM: Engage students with interactive content, provide personalized learning, and save time — all on one platform.



Create your own STEM course



Learn and practice



Assess and analyze

Introduction

Reaching every student in large, diverse classrooms is challenging. Students come from different backgrounds, knowledge levels, and learning needs, and educators face limited time and resources.

Sowiso bridges this gap with an all-in-one STEM learning and testing platform that makes education more effective, personalized, and accessible while saving teachers valuable time.



Benefits for educators and students

Create tailored STEM materials

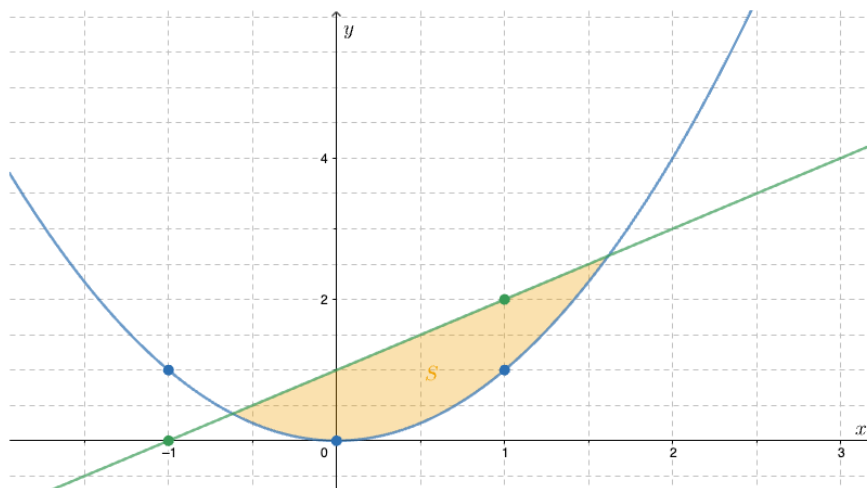
With our plug-and-play courses and extensive database of theory pages and exercises, you can easily select and design STEM materials tailored to your needs.

You can also create your own content from scratch with our user-friendly authoring environment. Through authoring, you can design exercises for diverse subjects like chemistry and accounting.

Area between graphs

Draw the region S enclosed by the graphs of the functions $f(x) = 3x + 6$ and $g(x) = 3x^2$ by dragging the points in the figure. This means that you need to graph the function $f(x)$ and the function $g(x)$.

Further on, we will ask you to calculate the area between these two graphs, so it is important to get this first step right.



Boost student engagement and foster mastery learning

Our interactive theory pages feature color-coded text, drop-down explanations for deeper insights, GeoGebra visualizations to explore mathematical concepts, and worked-out examples that guide students step by step.

Exercises with randomizable variables offer students endless practice opportunities, reduce the risk of cheating, and support mastery learning through repetition and variation.

When students encounter challenges, they can request hints for guidance and receive step-by-step feedback that identifies specific errors and guides them toward the right solution. Learners can also access individualized support through our AI chatbot, which enhances the learning experience.

Find the unique value of x for which $2 * x + 5 = -4 * x$ is true.

Give your answer in the form $x = \dots$ and simplify as much as possible.

ATTEMPT	ANSWER	FEEDBACK
1	$2 * x + 4 * x = -5$	✓ Simplify the left member so that the variable x only occurs once.
2	$6x = -5$	✓ Divide left and right by the coefficient of x .
3	$x = -5 * 6$	✗ No, your answer is too small.



Student: What did I do wrong?

0

AI BOT:

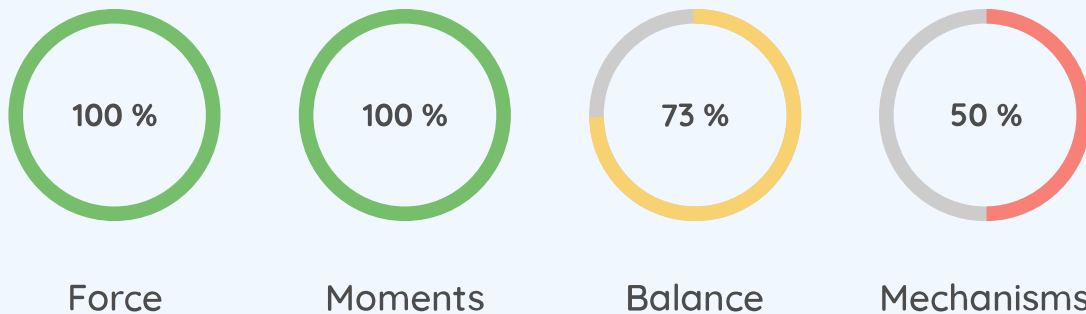
It seems like you have made a mistake in the final step of your calculation. You multiplied -5 by 6, but you should have divided -5 by 6. The correct calculation is $x = -5/6$.

Simplify and optimize your assessments

Sowiso can be used for diagnostic, formative, and summative assessments. Our flexible tests support various question types and can easily be distributed online. Depending on how much control a teacher wants, the test can be automatically generated or fully customized.

Students can reflect on their own learning progress through mastery-based learning pie charts, which encourage self-awareness and support motivation. Diagnostic testing allows students to pre-fill their mastery charts, giving them a clear starting point for their learning journey. It's also possible to gamify a class using points and badges associated with the mastery-based learning approach.

Test results per topic



Sowiso provides comprehensive reporting on all aspects of a class, with in-depth analyses per topic. With this reporting, teachers can proactively identify knowledge gaps, track individual progress, and refine their teaching strategies.

Save time with automated feedback and grading

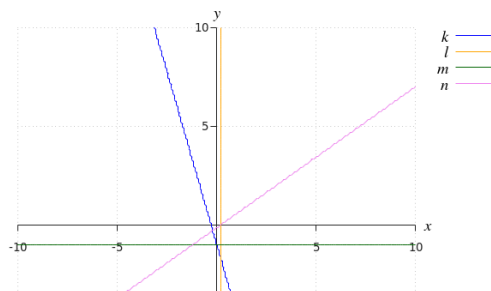
In addition to the personalized feedback students receive while they practice, grading is fully automated. The results will show the students a detailed report of their current knowledge. These features enable educators to focus on the most impactful areas of their work.

Make learning accessible for everyone

Sowiso is designed to support diverse learning needs. Teachers can adjust settings for students with accommodations, such as extra time or additional attempts for learners with dyslexia or dyscalculia. Features like Microsoft's Immersive Reader improve reading speed, reduce cognitive load, and support non-native speakers, boosting inclusivity in the classroom.

Linear functions

The lines below are solutions to linear equations. Drag the correct equation to the correct name of the graph.



adj. **Linear** n. **functions**

The n. **lines** adv. **below** v. **are**

n. **solutions** to adj. **linear**

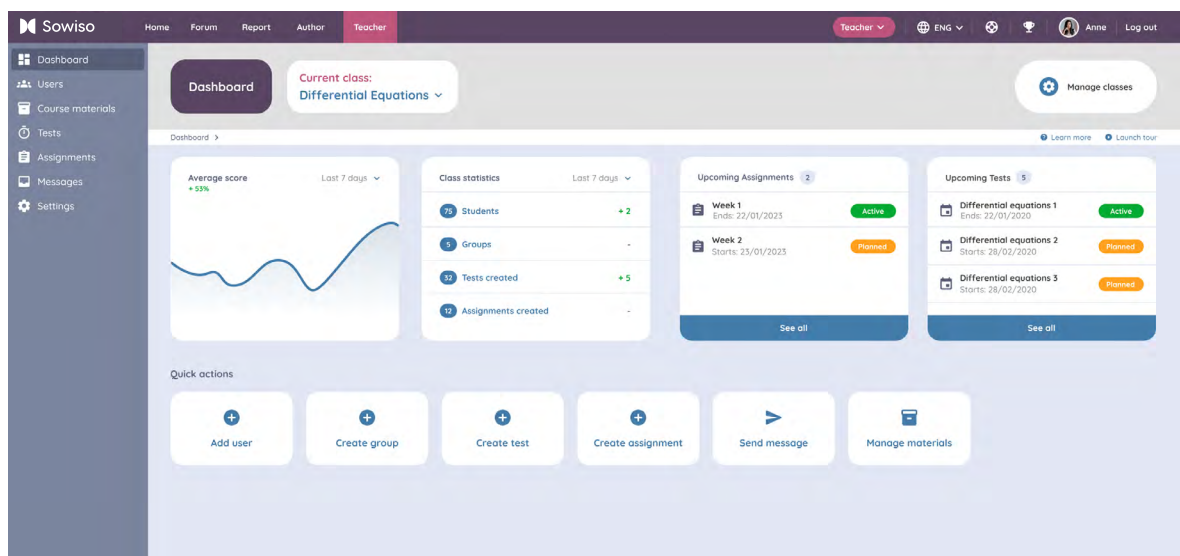
4 solutions

correct name of the
n. **graph**.

The essential software for STEM education

Everything you need to run your class in one place.





Our courses

Explore our plug-and-play interactive STEM courses

Engage students with interactive theory pages and dynamic content. Our library includes extensive topics on mathematics, from algebra to multivariate calculus, statistics, foundational physics, introductory Python, and more.



Mathematics

from algebra to
multivariate calculus



Statistics

from descriptive statistics
to regression analysis



Foundational physics

including one- and two-dimensional
motion, and free body diagrams



Introduction to Python

including loops, parameters,
lists, sets, and more



Applied basic math

for the sciences or economics



Chemistry

including drawing molecules,
balancing equations, and 3D
molecules for organic chemistry



Accounting

for financial and management
accounting



Additional math skills

for finance, economics,
and business

Or create your own courses!



View our full course catalog at
www.sowiso.com/courses



Sowiso in numbers

450 K+
users



5
continents



45+
institutions

15+
years trusted by leading
institutions worldwide



Why choose Sowiso?



Designed by experts

Our in-house team of STEM education specialists designs materials that are tailored to your needs and meet the highest security standards.



Teach more efficiently

Automated grading and real-time feedback will help you streamline your workload, allowing you to dedicate more energy to meaningful interactions with your students.



Data-driven insights

Make informed decisions with advanced analytics and actionable reporting tools.



Personalized learning

Ensure every student gets individualized support in an interactive and accessible platform.



Seamless integration

Connect effortlessly with your LMS, SURFconext, and all your favorite tools.

GeoGebra

BRIGHTSPACE

CANVAS



moodle



mollie

LTI 1.1

LTI 1.3

Remindo

Blackboard

Pricing

We offer flexible pricing plans tailored to teachers and their universities, colleges, and schools. New customers can begin with a “Starter Project,” where our team will work with you based on your goals and needs after consultation.

Our pricing is available on our website. If your faculty is interested in streamlining resources and reducing costs, we have a new offering on our full library. Additionally, we are a partner of OpenStax, an open educational resource publisher.

There are additional options for tailored pricing plans for publishers and tutoring companies.



For detailed pricing, visit
www.sowiso.com/pricing



What our partners say about us

**Erasmus
School of
Economics**

“You only have to program one exercise, but students can generate many different versions of it, giving them unlimited possibilities to practice. Sowiso offers great opportunities in the accounting field, and we haven’t run into major constraints anymore.”

Dr. Jeroen Suijs, Full professor, Erasmus School of Economics



“Sowiso includes motivating diagnostics providing the students with feedback on their progress, and the teachers with information on engagement and progress to allow them to offer tailored support.”

Dr Tim Hughes, Senior lecturer, University of Exeter



“As a teacher, I appreciated most that Sowiso is flexible, and we could adjust the Sowiso material (text and questions) to the level and requirements of our teaching program. The databases of questions we developed on Sowiso now serve both for formative and for summative testing and align with the learning objectives.”

Dr Jana Vyrastekova, Associate professor, Radboud University

Trusted by



KU Leuven



University of
Amsterdam



University of
Exeter



Edith Cowan
University



Algoma
University



Erasmus
University



University of
South Africa



University of
Groningen



Deakin
University



Maastricht
University



TU Eindhoven



Radboud
University

And many more!

Ready to engage students and save time?

Sowiso offers everything you need to teach, evaluate, and support your students in one place. Book a free consultation with one of our experts to see how we can transform your STEM teaching. We're here to help you discover how Sowiso can meet your unique needs. This isn't just a demo—it's a conversation tailored to you.



www.sowiso.com

By  **Paragin** Group