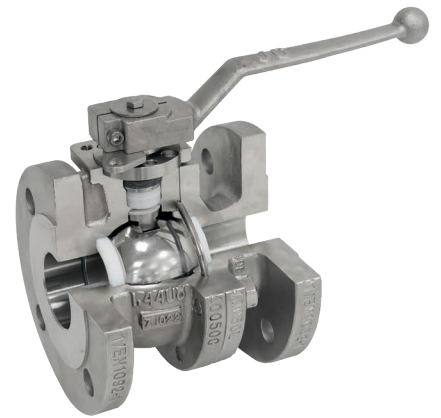
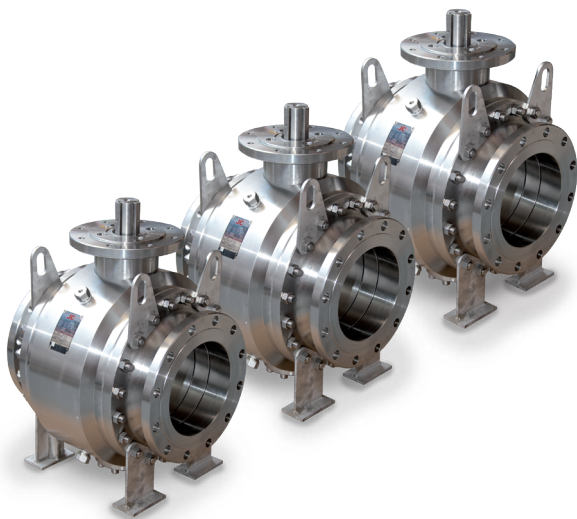


The quality option



“We make valves since 1968”

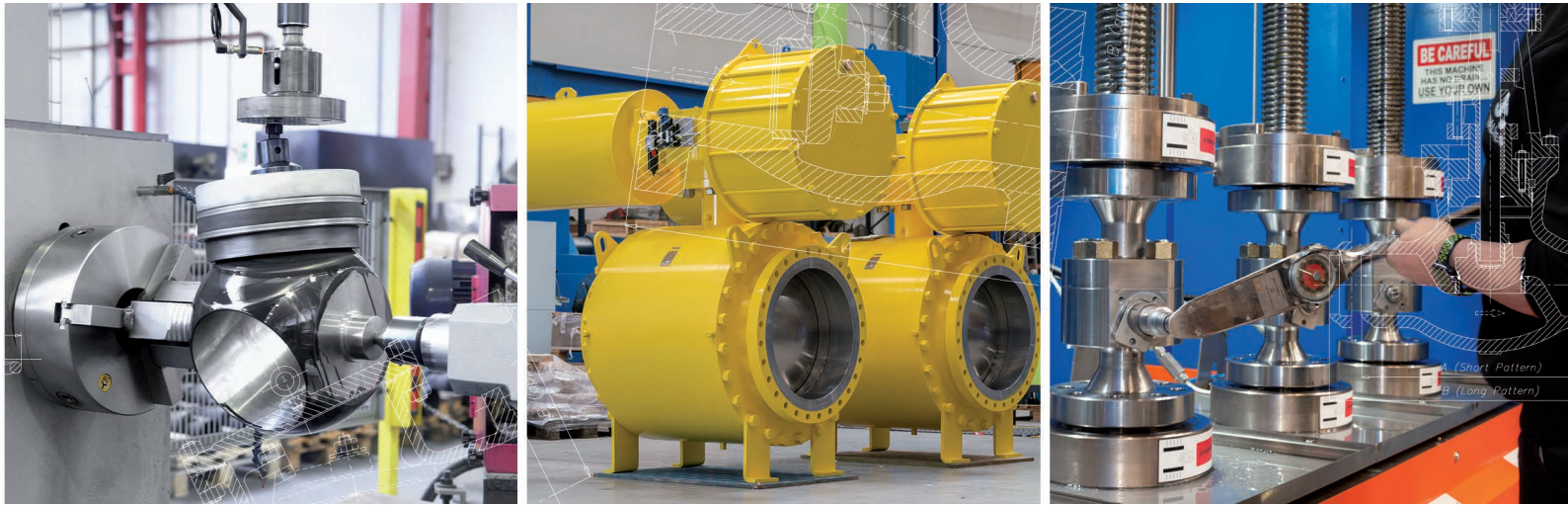


JC *Fábrica de Válvulas S.A.U.*, established in 1968, is a multinational company specialised in the manufacture and sale of high quality industrial valves.

The expertise and know how acquired over the years coupled with the continued investments in the design of valves, has made JC a world renowned company in the field of valve applications.

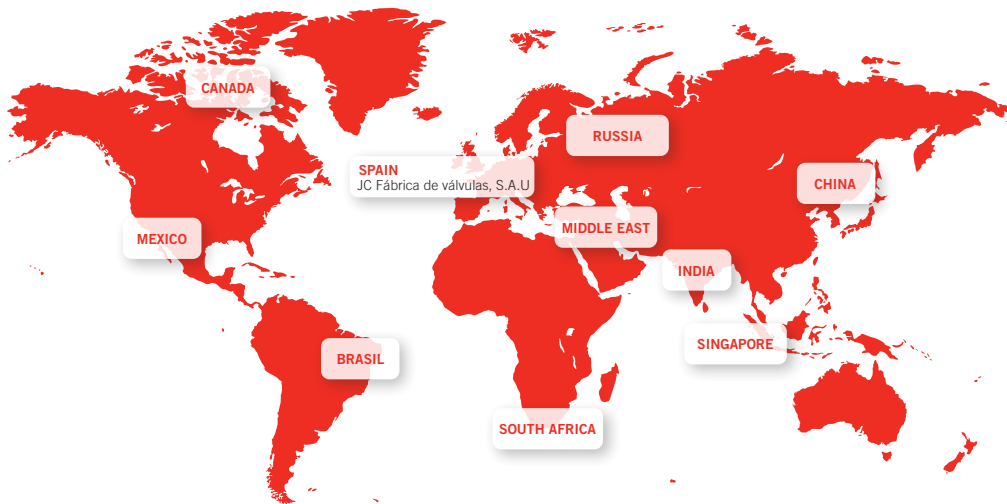
JC Fábrica de Válvulas S.A.U., fundada en 1968, es una empresa multinacional especializada en la fabricación y comercialización de válvulas industriales de alta calidad.

La experiencia y el saber hacer adquirido durante todos estos años, junto con las continuas inversiones en el diseño de válvulas, ha hecho de JC una empresa reconocida mundialmente en el campo de aplicaciones de válvulas industriales.



» TTV-JC World Wide | TTV-JC en el mundo

TTV-JC provides world wide coverage thanks to the strategic locations of its factories and offices:
 TTV-JC proporciona cobertura mundial gracias a la situación estratégica de sus fábricas y oficinas:

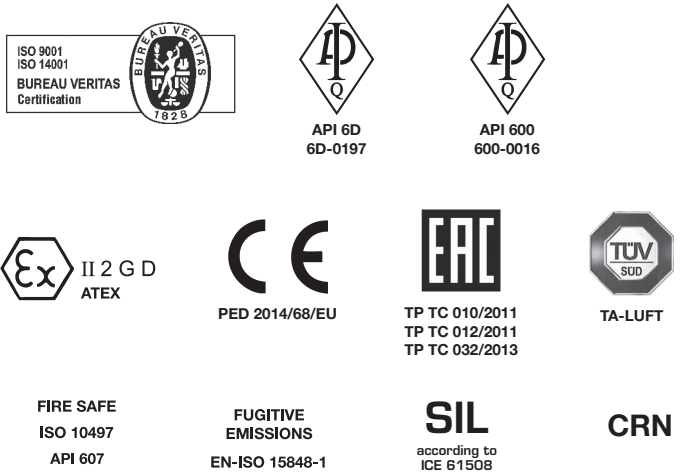


» Quality assurance | Sistema de aseguramiento

JC Valves are designed and produced to meet the major international standards and we take great care and put a lot of emphasis on QUALITY, which provides our customers with a total guarantee and trouble free operation of their process.

And in addition, we take great care to make our facilities and our products Environment friendly.

Las válvulas JC están diseñadas y fabricadas para cumplir las principales normas internacionales de certificación, y ponemos énfasis en la CALIDAD, que proporciona a nuestros clientes una total garantía y seguridad en las operaciones de sus procesos. Además nos preocupamos por que nuestras fábricas y productos sean respetuosos con el Medio Ambiente.



» Global services | Servicio global

JC Fabrica de Valvulas S.A.U offers its customers a world wide service, from technical advice to choose the right valve up to the design and manufacture of custom built valves to meet special service requirements.

Our R+D department is always ready to find solutions for severe applications and our global distribution network offers quick availability of JC valves and an efficient after sales service.

JC Fábrica de Válvulas S.A.U ofrece a sus clientes un servicio global, que va desde el asesoramiento técnico para la elección de la válvula adecuada, hasta el diseño y fabricación de válvulas a medida para requerimientos de servicios especiales.

Nuestro departamento de I+D está preparado para encontrar soluciones a las aplicaciones más severas. El Servicio de distribución mundial ofrece una rápida disponibilidad de las válvulas JC y un eficiente servicio postventa.

“R+D, quality and innovation”

“I+D, calidad e innovación”



» Market sectors | Sectores de actividad

JC develops and designs valves for all applications, but the main focus is in Oil & Gas, Chemical, Petrochemical, Pulp & Paper and Energy sectors.

JC desarrolla y produce válvulas para todas las aplicaciones, pero está especializada principalmente en los mercados de Petróleo, Gas, Química, Petroquímica, Industria Papelera y Energía.



Oil
Petróleo



Chemical
Química



Gas
Gas



Pulp & Paper
Industria Papelera



Petrochemical
Petroquímica



Energy
Energía

GLOBAL SERVICE
SERVICIO GLOBAL

TECHNICAL SUPPORT
SERVICIO TÉCNICO



DESIGN
DISEÑO



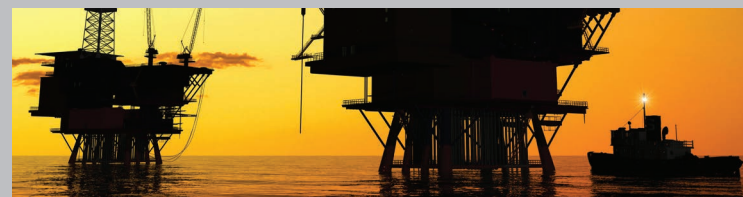
MANUFACTURE
FABRICACIÓN



WORLD WIDE DISTRIBUTION
DISTRIBUCIÓN



AFTER-SALES SERVICE
SERVICIO POST VENTA





Ball valves | Válvulas de bola

FLOATING ASME

- » **FIG. 515** | Full Bore
Class 150. From 1/2" to 8"
- » **FIG. 530** | Full Bore
Class 300. From 1/2" to 6"
- » **FIG. 715** | Reduced Bore
Class 150. From 1/2" to 12"
- » **FIG. 730** | Reduced Bore
Class 300. From 1/2" to 8"
- » **FIG. 560** | Full Bore
Class 600. From 1/2" to 4"
- » **FIG. 660** | Reduced Bore
Class 600. From 2" to 4"
- » **FIG. 590** | Full Bore
Class 900. From 1/2" to 2"
- » **FIG. 550** | Full Bore
Class 1500. From 1/2" to 2"
- » **FIG. 542** | Full Bore
Class 2500. From 1/2" to 2"



3 PIECE FORGED TRUNNION MOUNTED

- » **FORGED 6015** | Full Bore
Class 150. From 2" to 42"
- » **FORGED 6030** | Full Bore
Class 300. From 2" to 42"
- » **FORGED 6060** | Full Bore
Class 600. From 2" to 36"
- » **FORGED 6090** | Full Bore
Class 900. From 2" to 24"
- » **FORGED 6050** | Full Bore
Class 1500. From 2" to 24"
- » **FORGED 6042** | Full Bore
Class 2500. From 2" to 12"
- » **FORGED 7015** | Reduced Bore
Class 150. From 2" to 42"
- » **FORGED 7030** | Reduced Bore
Class 300. From 2" to 42"
- » **FORGED 7060** | Reduced Bore
Class 600. From 2" to 36"
- » **FORGED 7090** | Reduced Bore
Class 900. From 2" to 24"
- » **FORGED 7050** | Reduced Bore
Class 1500. From 2" to 24"
- » **FORGED 7042** | Reduced Bore
Class 2500. From 2" to 12"



FULLY WELDED VALVES

- » **FULLY WELDED**
Class 150 | 300 | 600. From 2" to 24"



FLOATING EN-DIN

- » **FIG. 516** | Full Bore
PN16. From DN 65 to DN 200
- » **FIG. 540** | Full Bore
PN40. From DN 15 to DN 150
- » **FIG. 316** | Full Bore
PN16. From DN 65 to DN 200
- » **FIG. 340** | Full Bore
PN40. From DN 15 to DN 150
- » **FIG. 512** | Full Bore
PN16. From DN 15 to DN 200
- » **FIG. 563** | Full Bore
PN63. From DN 15 to DN 100
- » **FIG. 599** | Full Bore
PN100. From DN 15 to DN 100



2 PIECE CAST TRUNNION MOUNTED

- » **CAST 2515** | Full Bore
Class 150. From 2" to 16"
- » **CAST 2530** | Full Bore
Class 300. From 2" to 16"
- » **CAST 2560** | Full Bore
Class 600. From 2" to 12"



SEMI-TRUNNION

- » **FIG. 1515** | Full Bore
Class 150. From 10" to 12"
- » **FIG. 1530** | Full Bore
Class 300. From 8" to 12"
- » **FIG. 1516** | Full Bore
PN16. From DN 250 to DN 300
- » **FIG. 1540** | Full Bore
PN40. From DN 200 to DN 300



METAL SEATED 3-PIECE FORGED TRUNNION MOUNTED

- » **FIG. 6015** | Full Bore
Class 150. From 2" to 24"
- » **FIG. 6030** | Full Bore
Class 300. From 2" to 24"
- » **FIG. 6060** | Full Bore
Class 600. From 2" to 24"
- » **FIG. 6090** | Full Bore
Class 900. From 2" to 20"
- » **FIG. 6050** | Full Bore
Class 1500. From 2" to 20"
- » **FIG. 7015** | Reduced Bore
Class 150. From 2" to 24"
- » **FIG. 7030** | Reduced Bore
Class 300. From 2" to 24"
- » **FIG. 7060** | Reduced Bore
Class 600. From 2" to 24"
- » **FIG. 7090** | Reduced Bore
Class 900. From 2" to 20"
- » **FIG. 7050** | Reduced Bore
Class 1500. From 2" to 20"





Ball valves | Válvulas de bola

3 PIECE FORGED FLOATING

- » **FIG. 800** | Full Bore Class 800. From 3/8" to 2"
- » **FIG. 81500** | Full Bore Class 1500. From 3/8" to 2"



MONOBLOCK

- » **FIG. 400** | Full Bore Class 800. From 3/8" to 2"
- » **FIG. 411N** | Reduced Bore Class 800. From 1/2" to 2"
- » **FIG. 41500** | Reduced & Full Bore Class 1500. From 3/8" to 2"



FLOATING 3 WAY

- » **FIG. 915** | Full Bore Class 150. From 1" to 8"
- » **FIG. 916** | Full Bore PN16. From DN 25 to DN 200



METAL SEATED

- » **FIG. 3516** | Full Bore PN16. From DN 65 to DN 200
- » **FIG. 3540*** | Full Bore PN40. From DN 15 to DN 150
- » **FIG. 3515** | Full Bore Class 150. From 1/2" to 8"
- » **FIG. 3530*** | Full Bore Class 300. From 1/2" to 6"
- » **FIG. 3560** | Full Bore Class 600. From 1/2" to 2"



(*) From 3" limited to 16 bar.

METAL SEATED UDV

- » **UDV Class 800** | Reduced Bore Class 800. From 1/2" to 2"
- » **UDV Class 1500** | Reduced Bore Class 1500. From 1/2" to 2"



METAL SEATED CAST TRUNNION

- » **FIG. 2515** | Full Bore Class 150. From 2" to 16"
- » **FIG. 2530** | Full Bore Class 300. From 2" to 16"
- » **FIG. 2560** | Full Bore Class 600. From 2" to 12"



TOP ENTRY RANGE

- » Class 150 / 300 / 600. From 2" to 24"
- » Other sizes and ratings available under request



HYDROGEN RANGE - H2SEAL

- » Class 150 to 2500. From 1/2" to 24"
- » PN16 - PN100. From DN15 to DN200





Gate valves | Válvulas de compuerta

GATE BOLTED BONNET

- » **VC150BB**
Class 150. From 2" to 42"
- » **VC300BB**
Class 300. From 2" to 42"
- » **VC600BB**
Class 600. From 2" to 24"
- » **VC900BB**
Class 900. From 2" to 20"
- » **VC1500BB**
Class 1500. From 2" to 16"
- » **VC2500BB**
Class 2500. From 2" to 14"



GATE PRESSURE SEAL

- » **VC900PS**
Class 900. From 2" to 20"
- » **VC1500PS**
Class 1500. From 2" to 18"
- » **VC2500PS**
Class 2500. From 2" to 12"



Globe valves | Válvulas de globo

GLOBE BOLTED BONNET

- » **VG150BB**
Class 150. From 2" to 16"
- » **VG300BB**
Class 300. From 2" to 12"
- » **VG600BB**
Class 600. From 2" to 12"
- » **VG900BB**
Class 900. From 2" to 8"
- » **VG1500BB**
Class 1500. From 2" to 8"
- » **VG2500BB**
Class 2500. From 2" to 8"



GLOBE PRESSURE SEAL

- » **VG900PS**
Class 900. From 2" to 16"
- » **VG1500PS**
Class 1500. From 2" to 16"
- » **VG2500PS**
Class 2500. From 2" to 12"



Check valves | Válvulas de retención

CHECK BOLTED COVER

- » **VR150BC**
Class 150. From 2" to 36"
- » **VR300BC**
Class 300. From 2" to 20"
- » **VR600BC**
Class 600. From 2" to 16"
- » **VR900BC**
Class 900. From 2" to 8"
- » **VR1500BC**
Class 1500. From 2" to 8"
- » **VR2500BC**
Class 2500. From 2" to 8"



CHECK PRESSURE SEAL

- » **VG900PS**
Class 900. From 2" to 16"
- » **VG1500PS**
Class 1500. From 2" to 16"
- » **VG2500PS**
Class 2500. From 2" to 12"



Special constructions | Construcciones especiales

JACKETED VALVES



DOUBLE PACKING



FULLY AUTOMATED BALL VALVES



VPORT CONTROL VALVES



CAVITY FILLER



CRYOGENIC SERVICE



METAL SEATED PULP & PAPER



TAILOR MADE VALVES (BAR OR FORGINGS)



Spain (Headquarters)

JC FÁBRICA DE VÁLVULAS S.A.U

Av. Segle XXI, 75
Polígono Industrial Can Calderon
08830 Sant Boi del Llobregat
Barcelona (Spain)
Phone: +34 93 654 86 86
Fax: +34 93 654 86 87
sales@jc-valves.com

China

JC MANUFACTURING GROUP (SHANGHAI) CO., LTD

No. 125, Ji Ye Road
SheShan Industrial Zone
Songjiang District, Shanghai, China
Phone: +86 21 57792345
Fax: +86 21 57792426
sales@jc-valves.net.cn

Russia

JC RUS, LLC

61 Nekhinskaya st., room 12
Velikiy Novgorod 173021
Russia
Phone: +7 8162 501050
office@jc-rus.com

Canada

TRUeline VALVE & JC-TL BALL VALVE

20675 Boul. Industriel
Ste. Anne-de-Bellevue, Québec
H9X 4B2 Canada
Toll Free: +1 800 667 4819
Phone: +1 514 457 5777
Fax: +1 514 457 1348
trueline.sales@trueline.ca
www.jc-tl.com

Singapore

JC FLOW CONTROLS PTE. LTD.

133 Cecil Street #16-01
Keck Seng Tower
Singapore 069535
Phone: +65 68624662
Fax: +65 62621434
bernardwong@jcflowcontrols.com.sg

United Arab Emirates

JC VALVULAS (ME) FZC

P.O. Box 51937
Hamriyah Free Zone
Sharjah (UAE)
Phone: +9716 526 93 53
Fax: +9716 526 93 56
sales@jcvalves.ae

India

JC VALVULAS INDIA PVT. LTD.

Plot. No. 143, Estate 1st. Main Road
Perungudi, Chennai 600 096
Tamilnadu, India
Phone: +914445587766
jcsales@jcvalves.co.in



For further information visit our website
www.jc-valves.com



Scan QR to get our
Ball Valves catalogue