

# The choice is yours

Skirting boards

LED strips

Technical profiles

Roller shutter systems



# We make rooms worth living in

“We are in close contact with customers and are developing products today that will enthral the market tomorrow.”

Hartwig Schwab, CEO / Chairman of the Board



Hartwig Schwab

Wolfgang Breuning

## About customers, markets and employees

It is the lighting up of people's eyes that drives on Döllken. This effect is achieved on customer faces when expectations are met exactly or are exceeded. It is attained when opportunities are spotted and leveraged, and exported into more than 50 markets across the globe. And it comes about when the workforce of 377 works every day with noticeable desire to contribute towards this success. A success story, because Döllken is continuing to this day to be the absolute specialist in extrusion. This is the result of a continual customer-centric approach.

**Thinking out of the box but never leaving sight of the picture as a whole**

With the holistic viewpoint and a "desire to achieve" work mentality, Döllken keeps succeeding in developing products and systems that simplify the finishing process and set new benchmarks as regards visual appearance.

Hartwig Schwab,  
CEO / Chairman of the Board

Wolfgang Breuning,  
Managing Director

## Important dates at a glance

Döllken has grown into an absolute specialist in extrusion. This is the result of a continual customer-centric approach.

- 1991 Establishing of Döllken-Weimar GmbH
- 1997 Establishing of Praktikus in Poland and Döllken CZ in the Czech Republic
- 2007 Acquisition of the Gardinia skirting division
- 2012 Start of the development of Döllken lighting
- 2015 Incorporation of the Döllken-Profiltechnik business into Döllken-Weimar
- 2016 25-year anniversary of Döllken and acquisition of Nenplas Limited
- 2018 Change of Döllken Weimar GmbH and Döllken Profiltechnik GmbH company names to Döllken Profiles GmbH
- 2020 New headquarters in Bönen. Completion of the new central warehouse and administration building in Bönen

# We are known as a manufacturer. We are valued as a reliable partner and innovator.

Producing quality and delivering it reliably are a matter of course – however guaranteeing sales-related support and solutions, and innovating products and tools, are unavoidable.

It goes without saying that Döllken delivers top quality reliably, can be contacted in person and brings with it expertise. What really sets Döllken apart is the aspiration and will to grow together with its customers. For this, the experts at Döllken provide strategies, analyses and specific recommendations and innovations. Our expertise together with outstanding products have made us and many of our customers what we/they are today – market leaders.

**“The goal is to generate customer benefit through differentiation and innovation.”**

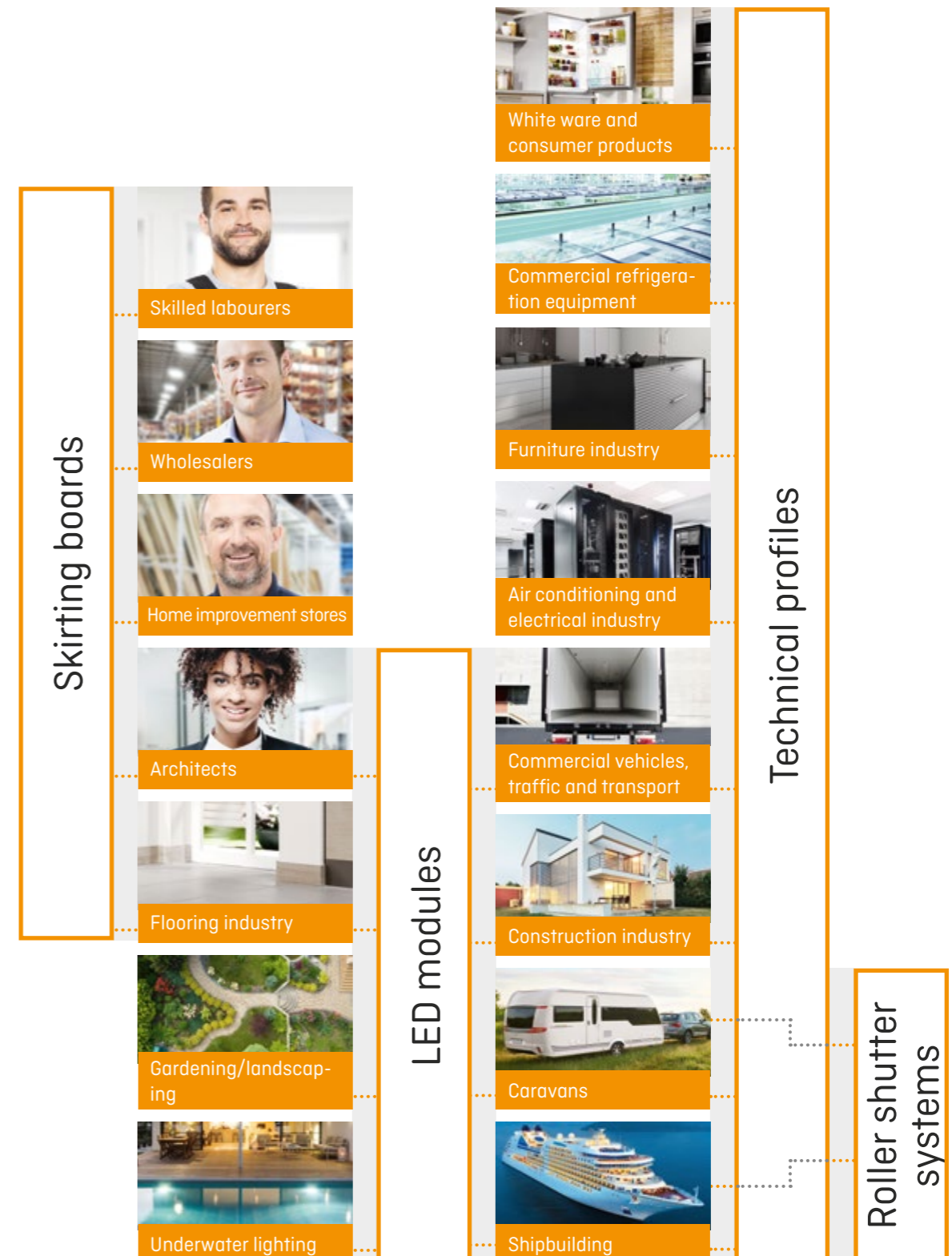
Hartwig Schwab

## A well-engineered and much-proven system

- 1 Customers come to you for solutions to their problems
- 2 You offer a solution – that also differentiates you from the competition
- 3 Döllken provides a system comprising product, innovation, tools, training, services, marketing, etc.
- 4 Installation is straightforward, reliable and highly efficient with special tools

**i** Only 5 to 6 months development time and every year 6 to 8 new products ensure over 30% of turnover is with new products.

# Customer segments in which we are active.



# We have a local presence for you



## Our new head office in Bönen

After just ten months construction and relocation time, the start of 2021 saw Döllken Profiles successfully commence operations in the extended main plant in Bönen, and move into the old, or new, home.

For Döllken Profiles and its customer base, the Bönen site is deemed the birthplace and cradle of the successful solidcore skirtings. For almost 50 years, actually since 1972, these types of boards were being developed and produced at the site – at the start by Schock & Co. GmbH.

During the course of the amalgamation of logistics and administration within the fourth quarter of 2020, all of the activities of Döllken Profiles in Gladbeck were relocated to Bönen.

Over 10,000 square metres of additional space at the Bönen plant, it is not only logistics that has been elevated to a completely new level. Ten new production lines have also been installed on space becoming vacant.

The workforce at the Bönen site, now 176 strong, manufactures here solidcore skirtings and technical profiles as well as innovative products for Döllken Lighting.

## Plastic skirting boards from Döllken Profiles

Skirting boards and other plastic profiles have been extruded at the Thuringian plant since 1991. Döllken acquired Kunststoff GmbH Weimar, arising after reunification from the expansion of the publicly owned enterprise, where it pools the activities in the skirting boards sector. In 1998, Döllken Weimar GmbH moved into the new build on the U.N.O. trading estate, where they set up the head office for the company. 12 extrusion units and about 70 employees were there at the start.

Every year, about 34,000,000 metres of plastic profiles are produced in Grammetal. The 20 extrusion lines process about 4,500 tons of synthetic powder and granulate, primarily PVC. The focuses of production are hard, plasticised PVC and foam extrusion.



## Technical profiles from Döllken Profiles

**Lying on the edge of the Black Forest**, the Dunningen site manufactures solely customer-specific profiles for the most diverse industrial sectors, as well as roller shutter systems for the office furniture industry.

The competence focuses here lie in custom production methods, material selection and configuration to be able to address in full the respective customer requirements.

This has meant a wide-ranging customer base has been built up over the years, in segments such as construction industry, electrical engineering, commercial vehicle manufacturing, air-conditioning and commercial refrigeration equipment.

On 17 extrusion lines operating 3 shifts and with ejector lines between 10 kg/h and 280 kg/h, the plant processes all popular thermoplasts into now 300 different profile cross-sections. Customers value our flexibility, customer focus, speedy project realisation times and constant quality levels.

## Machinery and plant engineering for Döllken Profiles

**As part of the ongoing expansion**, Döllken Profiles is broadening its portfolio by adding the Plant Engineering and Automation division. The expertise of this division, previously bought in from outside, can since mid-May 2021 be sourced internally by Döllken Profiles. By acquiring the machinery of CRG Automatisierungstechnik GmbH headquartered in Rieschweiler-Mühlbach, and using existing production capacities, Döllken Profiles is integrating this important range of services into its own value-added chain. A key cornerstone for continued growth has thus been laid.

For more than 25 years, CRG Automatisierungstechnik GmbH was a specialist in the design and production of complex, high-precision machinery and

systems. CRG developed innovative, premium-quality automation solutions for assembly, handling and test systems. The company from the Pirmasens region also built individual systems for specific problems at its customers, and manufactured systems and custom machines in line with customer specifications.

Since spring 2021, very specific and sometimes highly complex custom systems and fixtures for internal use are made, whereby the company's own set of systems undergoes gradual optimisation. The aim this way is to continually increase process capability – also in terms of automation.

# Theory becomes ...

The greatest power is imagination. When a company is on the lookout for custom-made components, we can, thanks to our expertise and creativity, offer solutions quickly. The smooth realisation of theoretical approaches, extending all the way to high-quality products, is a standout attribute of Döllken and what sets us apart from other suppliers.

We call this competence in providing solutions

# ... reality brought to life

"What our customers value is that we are only satisfied once a product has become a real solution."

Wolfgang Breuning,  
Managing Director

# Skirting boards that are a perfect match

Wishes become reality: matching decor, rich in contrast, flexible or rigid – there are no bounds.

The right skirting board for all tastes. Just as diverse as the modern flooring surfaces are the variants of skirting boards that lend the perfect transition between flooring and wall. From solidcore skirtings to custom profiles – the place of use determines the model fitted.

#### Solidcore skirtings

Unique in finishing and eco-balance

In no time at all to a harmonic link between wall and flooring

#### LED and cable duct boards

Exceptional appearance and functional properties perfectly combined

**Flooring profiles** for a diversity of applications and particular requirements

#### Plastic skirting boards

Reliable finishing on the most diverse of floor surfaces

#### Wall and custom profiles

for neat and tidy finishing on walls, door frames and heating pipes

#### Flexible skirtings



#### The art of matching decor

One core competence of Döllken is the ability within the shortest time to manufacture and distribute strips with matching decor for new floor decor variants. In this regard, Döllken is virtually on its own in the industry. As perfectionists, we are only satisfied once floor surfaces and skirting boards form a harmonic, perfectly coordinated unit.



#### Revolution in finishing

Thinking systematically also means not stopping at skirting boards. Döllken's thinking extends beyond production. This has given rise to tools that have revolutionised the market. In excess of 50,000 die cutters are being used by skilled labourers. This tool ensures that workers are able to fit skirting boards in record time.



Did you know that ...  
... skirting boards from Döllken are available with 1,300 decor variants?

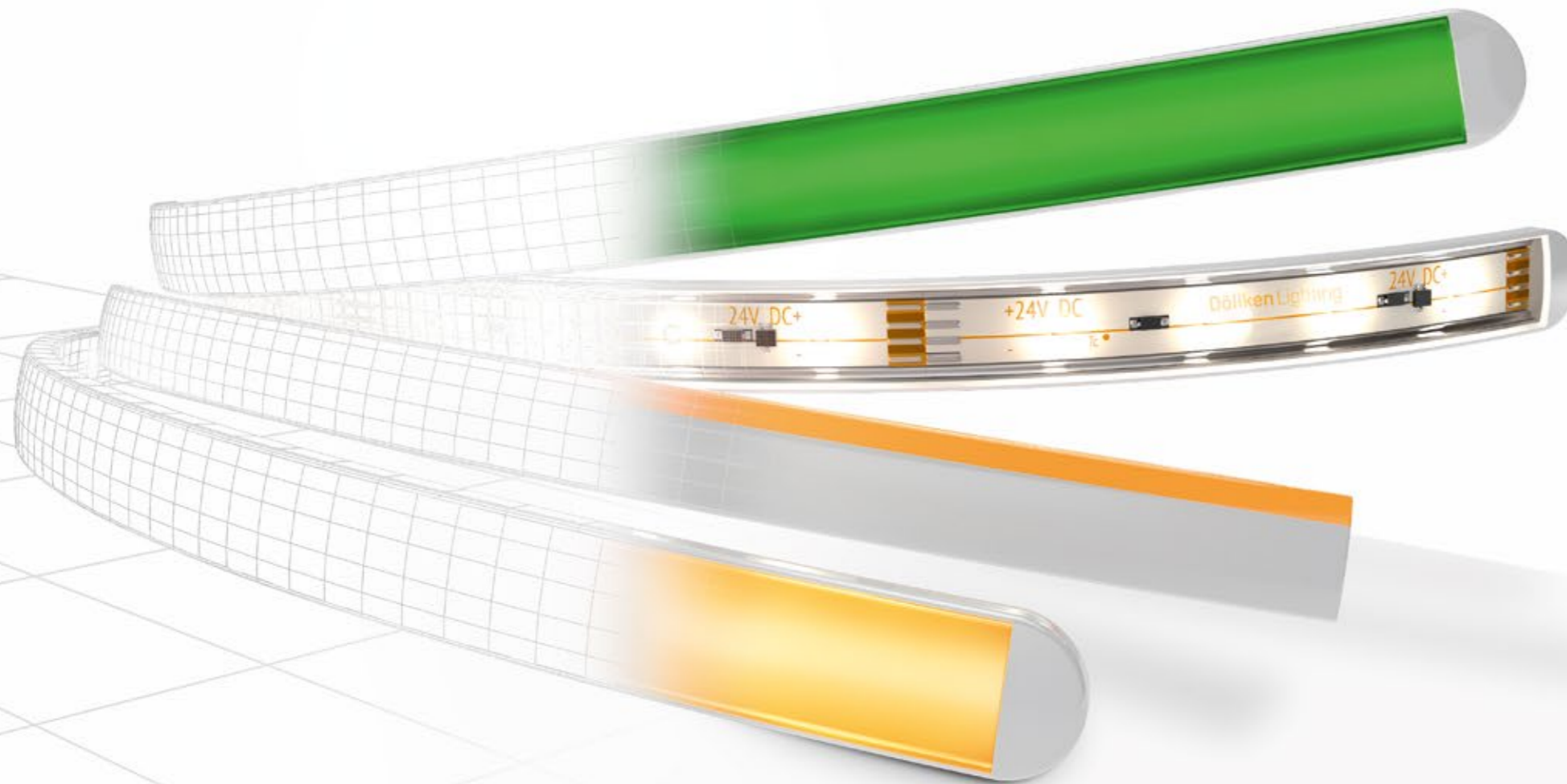


Select the right strip decor for more than 5,000 different floor decor variants. Visit [www.doellken-profiles.com](http://www.doellken-profiles.com) for our practical decor finder.

# LED strips that illuminate objects and markets

Bright accents  
create the right atmosphere

Unbelievably flexible and yet extremely resistant – LED strips from Döllken enhance ships, buildings, furniture and skirting boards.



#### Unbelievably functional, flexible and yet tough

As an extrusion specialist, Döllken uses this technology to extrude LED strips and so to make them extremely resistant. These LED strips are resistant to water and UV radiation, as well as to salts, chemicals, oils, fuels and microbiological attack. This means customers are able to deploy LED strips at places previously considered unthinkable.

#### Spaces/rooms, façades, terraces, bus/train/tram stops and cruise liners – nowhere is unsuitable

These LED strips are able to attract attention at any place in the world. This is made possible by the unique finishing and the fact that the entire strip, including the connectors, has IP68 protection. For the maximum level of safety, even when exposed to harsh weather conditions, distortion and mechanical stress.

#### Systematically designed – custom-made, configured and delivered ready to connect

Light is subjected to strict national and international directives and specifications. To meet these requirements and to provide safety to customers, Döllken delivers its LED strips as all-inclusive packages ready to connect, and individually configured, anywhere in the world.

#### Research and development to realise individual wishes

Döllken accesses the skill sets of the entire group to continually optimise LED strips together with engineers. This means even the most outlandish customer wishes can be realised.

#### Made to measure

We provide project-specific, configured solutions with full sets of connectors.



#### Did you know that ...

... the LED strips from Döllken have been tested down to a water depth of 3,250 metres, and passed successfully?



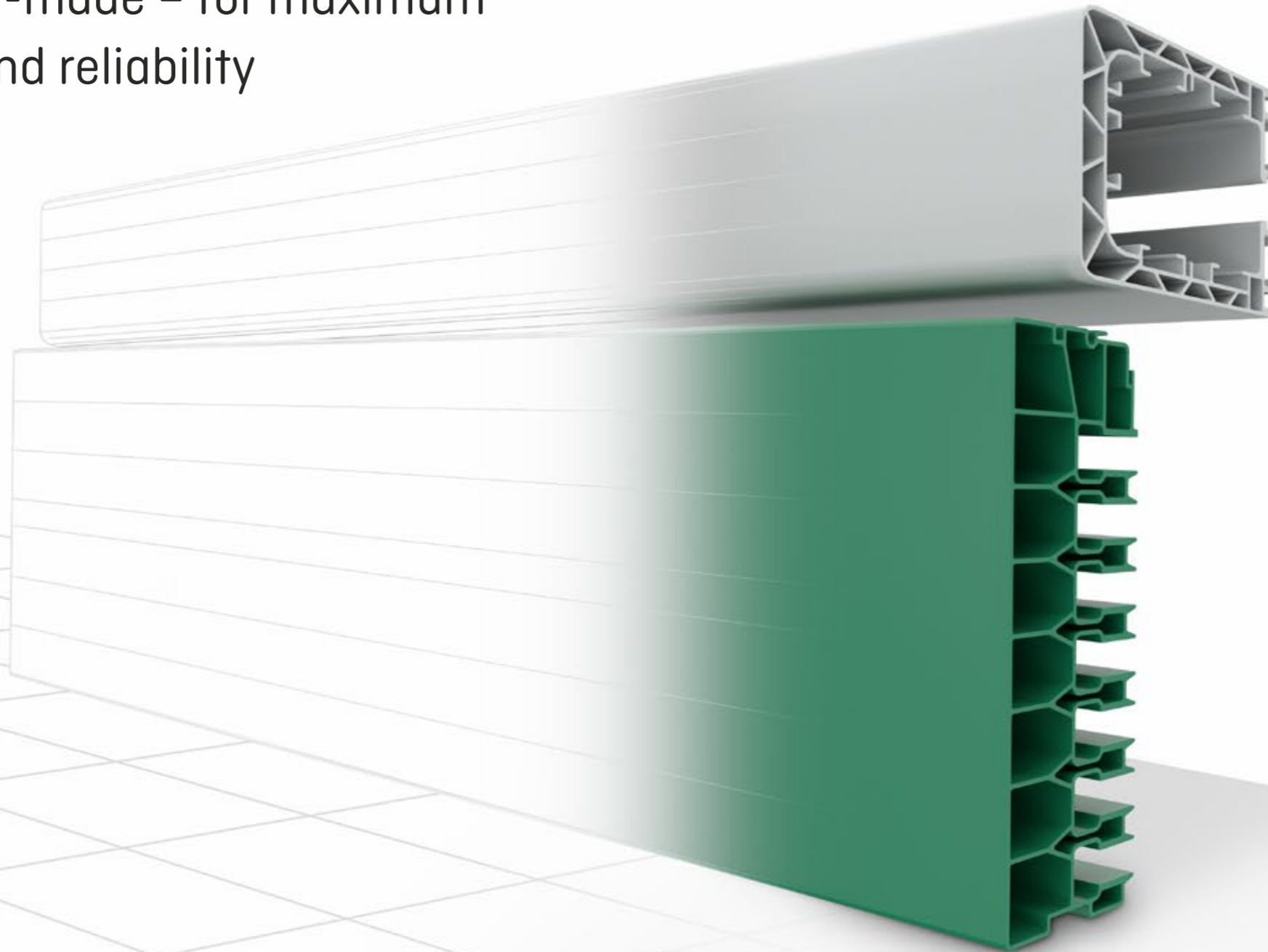
The choice could not be bigger.  
Please visit [www.doellken-lighting.com](http://www.doellken-lighting.com)  
for more variants of the LED strips



# Technical profiles that extend into the future

Profiles are individually designed and produced tailor-made – for maximum functionality and reliability

No two profiles are alike. Different situational circumstances require tailored materials, colours, shapes, lengths and packaging. Individual design is followed by what is then later produced a thousand times in volume production – a technical profile that keeps the previous promise of Döllken.



#### Own toolmaking facility for smooth production

The digital design phase takes place in our own toolmaking facility at Döllken. A rarity, that guarantees that production later is possible a hundred thousand times with no problems – in unrivalled product quality and under the strictest reliability standards.

#### Planning, design, toolmaking, production and distribution – 6 steps to the perfect profile

- 1 All requirements are collated in the planning phase.
- 2 Solution approaches are developed in the design phase.
- 3 Our own toolmaking capability ensures production is reliable.
- 4 Volume production is carried out under the strictest of reliability standards.
- 5 A comprehensive logistics network ensures just-in-time delivery reliability.
- 6 Technical expertise as regards methods and materials.



Did you know that ...

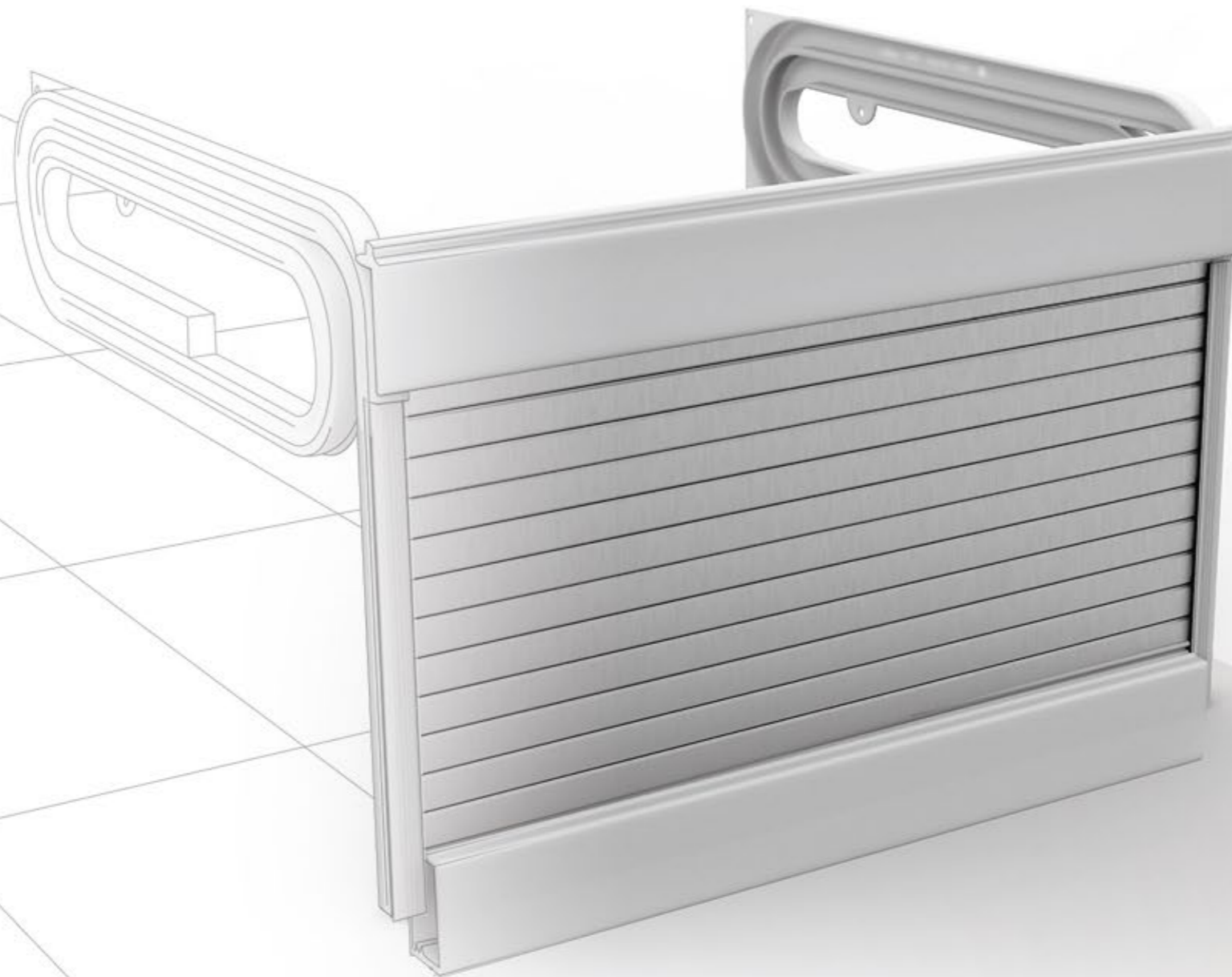
... about 25 different technical profiles with a total length of 250 m are fitted inside an average 10 m<sup>2</sup> caravan?



We create a suitable profile for every requirement. Arrange an appointment with us: +49 (0)7403 701 0 or request a brochure.

# Roller shutter systems that open up horizons

Functional and highly resistant – with decor to match furniture if required



Roller shutters from Döllken are incorporated into hundreds of thousands of pieces of furniture worldwide and have been recognised for decades as high-quality and reliable products.

#### Visually matching decor – unique

The material for the surfaces of the roller shutters also comes from the unique company structure. So if required the surface can be made to visually match the decor of the body or cabinet.

#### Perfect joint patterns thanks to film technology

Roller shutters from Döllken are also the preference for high-class furniture because they exhibit a perfect joint pattern. The reason: the surface film can be applied into the joints and “finishes” them perfectly in terms of appearance.

#### All-inclusive system: delivered ready for fitting and just-in-time

“Designed systematically with simplicity in mind.” Faithful to this slogan, customers receive a complete and ready-to-fit system with all accessories necessary – due in part to the extensive in-house production depth at Döllken. Procurement and storage become much simpler for customers. An offer of just-in-time deliveries is something the furniture industry likes to make use of.

#### Special features

For particular requirements, Döllken offers functional solutions. Acoustic roller shutters provide noise prevention, while rails with glide layers ensure they are particularly smooth and easy to use.



#### Did you know that ...

... even the roller shutter systems are manufactured as custom variants for every decor, to the customer's very own requirements?

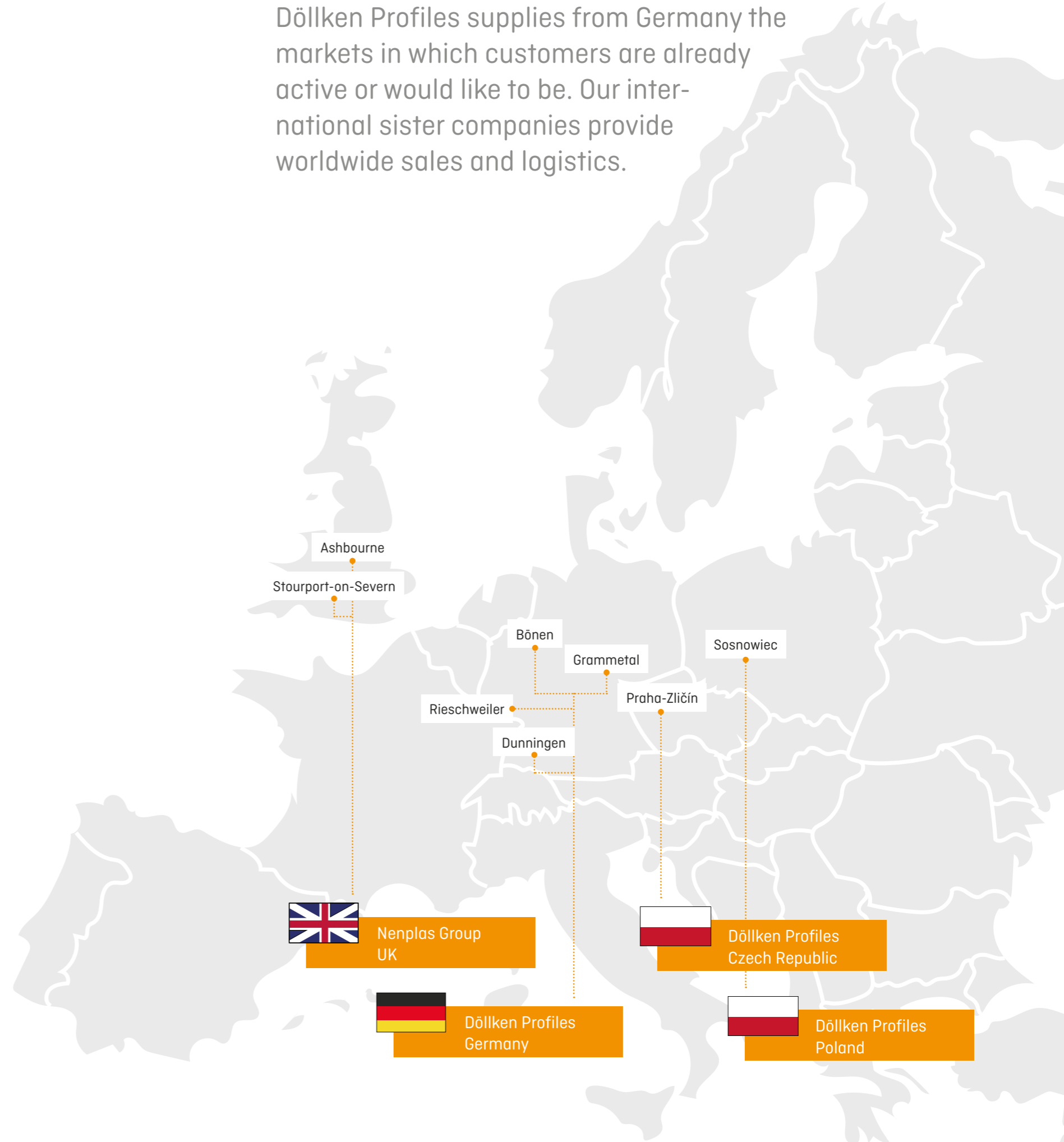


Ask us about solutions for your individual application: +49 (0)7403 701 0 or [info.pt@doellken-profiles.com](mailto:info.pt@doellken-profiles.com)

# Networked and active across the globe – as part of the SURTECO GROUP SE

SURTECO GmbH Decoratives		SURTECO Beteiligungen GmbH Technicals	DÖLLKEN Profiles GmbH Profiles
SURTECO Australia	SURTECO Great Britain	KRÖNING Germany	DÖLLKEN Poland
SURTECO Asia	SURTECO Italy	DAKOR Germany	DÖLLKEN Czech Republic
SURTECO France	SURTECO Germany	GISLAVED FOLIE AB Sweden	NENPLAS GROUP Great Britain
SURTECO North America	SURTECO Russia		
PROADEC Portugal			
PROADEC Brazil	PROADEC Great Britain	CHAPACINTA Mexico	

Döllken Profiles supplies from Germany the markets in which customers are already active or would like to be. Our international sister companies provide worldwide sales and logistics.



**Did you know that ...**  
 ... at Döllken, environmental protection assumes a key role for products as well as the production process? All materials are REACH compliant. Our products also have certifications, such as the Greenguard Certification.

# Responsibility for a sustainable future



As a manufacturer of high-quality plastic skirtings known across the globe, we are committed to excellent and sustainable quality. We continually check all well-established products in regard to composition, workmanship quality and environmental compatibility. Be it the selection of raw materials used or optimisation of the production processes,

the issue of environmental friendliness is paramount. Our responsibility as regards sustainability continues long after our skirting boards are fitted. This is why we subscribe to certifications and continual quality checks – for a healthy living environment and ecological compatibility.

Working in a sustainable way with resources is very important to us. An efficiency raising project is therefore being realised at the Grammetal site. The goal, by using modern LED lighting, compressed air optimisation and recovery of waste machine heat, is to save energy and so significantly reduce CO<sub>2</sub> emissions. In the future, this will save about 96 tons of CO<sub>2</sub> per year. Funding for this project is being made available by the European Fund for Regional Development.

- Certified quality
  - ISO 50001:2011 - Energy Management
  - ISO 9001:2015 - Quality Management
  - ISO 14001:2015 - Environmental Management Systems
- All materials used are REACH compliant. All solidcore skirtings are made from chlorine-free synthetics and have ISO 16000 low-emission certification, and the HDF cores are FSC-certified. Use of PVC containing no heavy metals that are harmful to health.



Das Zeichen für verantwortungsvolle Waldwirtschaft

Refer to our solid wood catalogue for our FSC and PEFC-certified wooden strips.



Almost all products have Greenguard Gold certification. They thereby satisfy the strictest requirements pertaining to the reduction of hazardous substance emissions into the ambient air.



All solidcore skirtings are made from chlorine-free synthetics, are certified to ISO 16000 and are low emission.



A number of our plastic skirting boards (including staircase edges and flexible boards) are made only with phthalate-free plasticizers.



Nearly all solidcore and flexible skirtings in the "Life" family have been awarded the Blue Angel.

[www.blauer-engel.de/uz120](http://www.blauer-engel.de/uz120)

[www.blauer-engel.de/uz176](http://www.blauer-engel.de/uz176)



If so required, our flexible skirtings are also available as antibacterial variants in line with the ISO 22196:2011 standard, and so have the Biomaster seal.



Other certifications All solidcore skirtings are made from chlorine-free synthetics, are certified to ISO 16000 and are low emission.

