

# AMP Cortex™ Single-Robot System

## Product Datasheet

The AMP Cortex intelligent robotics system dramatically lowers labor costs, while increasing the value of material recovered, with 24/7 coverage and consistent productivity. AMP's groundbreaking artificial intelligence (AI) technology enables the robotic sorting of material as granular as a type of plastic at a pick rate of upwards of 80 items per minute—twice as fast as manual sorting, and with greater accuracy and consistency.



AMP's industry-leading AI platform, unmatched in depth and breadth, helps facilities quickly adapt to tonnage increases and changes to the material stream without sacrificing quality. With Cortex, facilities can capture more in-demand commodities, increase uptime, and reduce variable costs to improve profitability.

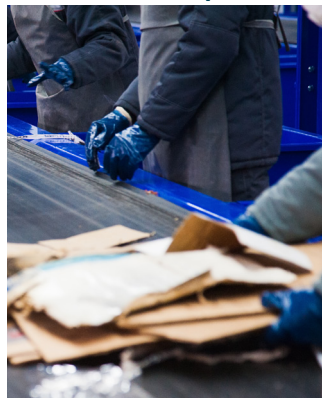
## Creating solutions to the industry's most pressing issues:

### Labor



Reduce time and money spent on high turnover positions.

### Safety



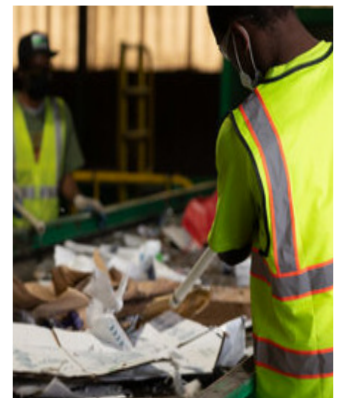
Increase facility safety and reduce training overhead.

### Material Recovery



Quickly pivot and capture high value materials.

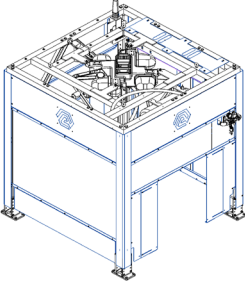
### Contamination



Decrease bale contamination.

# AMP Cortex™ Single-Robot System

## Technical Specifications

Dimensions & Weight		Performance Specifications	
 <p><b>Installed height:</b> 111" (282cm) from ground to the top of the system</p> <p><b>Control cabinet dimensions:</b> 40"x21"x78" (101cm x 53cm x 198cm)</p> <p><b>System weight:</b> 2600lbs (1180kg)</p> <p><b>Frame Composition:</b> Steel tubing / Top Frame 3" x 3" (7.62cm x 7.62cm) / Frame Legs 4" x 4" (10.16cm x 10.16cm)</p>		<p><b>Pick rate:</b> Up to 80ppm</p> <p><b>Number of discrete sorting placements:</b> Up to 4</p> <p><b>Maximum object weight:</b> 10lbs (4.5kg) per Robot</p> <p><b>Burden depth:</b> 1 object</p>	
Conveyor Specifications	Environmental	Electrical & Air	Connectivity
<p><b>Maximum conveyor belt speed:</b> 300 feet/minute (91 meters/min)</p> <p><b>Minimum conveyor visibility:</b> 80% covered, 20% visible</p> <p><b>Optimum conveyor belt width:</b> Less than 36" (91 cm)</p> <p><b>Maximum conveyor belt width:</b> 42" (107 cm)</p>	<p><b>Operating temperature range:</b> 33°F (1°C) to 105°F (40°C) at up to 95% ambient humidity</p> <p><b>Noise emission:</b> 89.5 dB (max)</p>	<p><b>Electrical Supply:</b> 208-220V AC / 1 Ph / 50-60 Hz, 20A Service</p> <p><b>Air Supply:</b> 60 CFM @ 120 psi [1700 l/min @ 8.3 Bar] (ISO 4.4.4)</p>	<p><b>Internet:</b> Wired Ethernet 10 Mbps+ (IEEE 802.3, CAT5 or better)</p>
User Interfaces		Other AMP Systems	
<p>Control cabinet (14.5" x 17.5") touch-screen display</p> <p>(Optional) AMP Clarity™ web based data portal for desktop</p>		<p>AMP Cortex Tandem System</p> <p>AMP Vision™ System</p> <p>AMP Dual Gripper</p>	

## Unmatched AI Technology with the Broadest Array of Material Types



Fiber



Plastics



UBC & Metals



Commingled & Residue

### LEGAL COMPLIANCE

This product is CE and UL marked in accordance with the following directives:

The control panel is UL508A listed as an enclosed industrial control panel for installation in the United States