

Quality, the best value.



ET Box 300 I

for optimised handling



Technical Data*¹

External dimension

L x W x H (mm): 1200 × 780 × 630

Internal dimension

L x W x H (mm): 1125 × 690 × 505

Material*²: PE

Volume (l): 300

Weight (kg): 17,7

Standard colour: ■

Load capacity*³

Holding Capacity (kg): 250

Extra Load (kg): 785

Stacking height

Stacking height (mm): 605

When nested (mm): 140

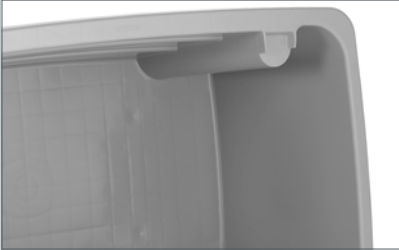


70%
volume reduction*⁴

Quality, the best value.



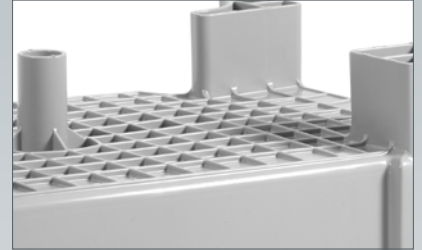
All advantages at a glance:



Smooth interior walls for easy emptying and cleaning



Reinforced long side walls for **high stability** and **easy stacking**



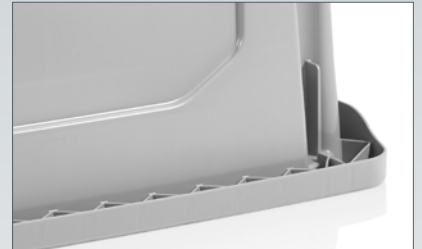
Reinforced base due to orthogonal ribbing



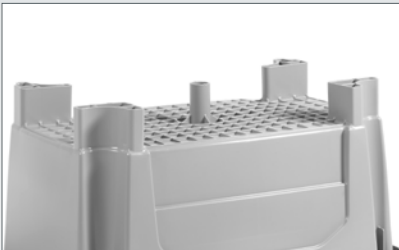
Nestable and stackable. Volume reduction of approx. 70%*⁴ for efficient empty transport



Optimised stacking system, easy and safe



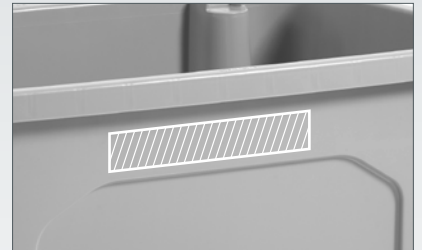
Dimensionally stable due to tight ribbing in the rim



Safe stacking via 4 outer feet, 1 central foot for **high stability**



Integrated transponder bracket for optional use of RFID tags



Labelling field for individual logos, lettering or numbering

Do you have questions or require detailed information? We are happy to advise you.

Germany (Headquarters)

Craemer GmbH

Brocken Straße 1

33442 Herzebrock-Clarholz

Germany

Tel.: +49 5245 43-0

Fax: +49 5245 43-201

E-mail: info@craemer.com

www.craemer.com/en

United Kingdom

Craemer UK Ltd

Craemer House

Hortonwood

Telford, Shropshire TF1 7GN

United Kingdom

Freephone: 0800 032 4291

Tel.: +44 1952 6078-00

Fax: +44 1952 6078-01

E-mail: info@craemer.com

www.craemer.co.uk

www.craemer.com

^{*3} All technical data includes characteristic features, which have been tested under specially defined conditions. Varying data may result from different conditions of usage such as loading method, prevailing temperature and length of storage time. All data and specified information are subject to change without notice. Our service team is pleased to be at your disposal to check the special requirements of your individual application.

^{*2} Our service team is pleased to be at your disposal if you require exact information about material compositions.

^{*3} Load capacity: with a holding capacity of 250kg at approx. 20°C.

^{*4} 4 ET boxes stacked on top of each other are equivalent to 14 ET boxes stacked inside each other (stacking height of 2445mm or 2450mm)