

100% NATURAL, CUSTOMISED FACE & BODY CARE.

HEALTH | BEAUTY | WELL-BEING



28,000 PROFESSIONALS TRUST ENDERMOLOGIE®.

JOIN US!



**INNER POWER.
BETTER LIFE.**

CELLULAR STIMULATION WORLD-LEADER

With its endermologie® products and services, LPG® Group has become the slimming and anti-ageing treatment reference.

- **“MADE IN FRANCE” KNOW-HOW** and manufacturing since 1986
- **PROVEN EFFECTIVENESS** with **+150 scientific studies**
- **PRESENCE** in 100 countries



82%*
OF WOMEN PAY
ATTENTION
TO THEIR FIGURE

93%**
ARE LOOKING
FOR NATURAL
BEAUTY SOLUTIONS

100%**
WANT
RESULTS

ENHANCE YOUR EXPERTISE WITH ENDERMOLOGIE®



ATTRACT NEW CUSTOMERS WITH A SOUND INVESTMENT.

Inspired by manual massage, endermologie® is the exclusive principle of action of LPG® patented technologies. It mechanically stimulates the skin's surface to reactivate dormant cellular activity. **Choose a 100% natural, non-invasive and non-aggressive technique with scientifically-proven results.**



MAXIMISE TREATMENT ROOM OCCUPANCY WITH SHORT & EFFICIENT TREATMENTS.

An endlessly-customisable treatment menu combined with endermologie® skincare:

- Body treatments from 10 to 50 min.
- Face treatments from 10 to 75 min.



INCREASE CUSTOMER LOYALTY WITH VISIBLE SLIMMING & ANTI-AGEING RESULTS.

- Visible results as of the 1st session
- Intelligent, customised treatments to fit each customer's needs
- A year-round beauty lifestyle



*2018 Harris Interactive for the Cetelem Observatory zooms. **Opinion Way study for LPG SYSTEMS on 1,044 women.

BOOST YOUR PROFITABILITY WITH CELLU M6 ALLIANCE®



CELLU M6 ALLIANCE®
BODY ONLY
OR BODY AND FACE

MOBILIFT M6® CONNECT
FACE

Because today more than ever you need to stand out of the crowd and fulfill the needs of a demanding clientele in a short time, the LPG® Group has developed an extraordinary technology for you: the **Cellu M6 Alliance®**.

By combining CELLU M6 ALLIANCE® and MOBILIFT M6® CONNECT devices, you will be able to double the number of LPG® workstations and to offer highly profitable treatments to boost your business.

- **INCREASE** VISITS TO YOUR CENTRE
- **OPTIMISE** YOUR BEAUTICIANS' PRODUCTIVITY
- **INCREASE** THE VALUE OF YOUR SERVICES
- **GENERATE** ADDITIONAL TURNOVER

WITH ENDERMOLOGIE®, CREATE THE IDEAL TREATMENT MENU:

- Treatments to be combined with your current services (massage, manicure...) to offer customers a new sensory experience
- As an additional step to your signature treatments to boost the efficiency of skincare active ingredients.



To boost LPG® treatments' visibility and to liven up your centre, bring face endermologie® out of the treatment room.

“LPG® has helped us to deliver miracles to clients. It helps us to deliver their dreams: firmness, anti-ageing, perfect skin on their face and a toned, cellulite-free body. That is what everybody wants. LPG® is the best thing money can buy.”

Akash & Bavi
Slim Bodyline Clinic, London (UK)

“I decided to invest in the new Cellu M6 Alliance® because it was important for me to have the latest technology. I had received a lot of positive feedback about it in terms of quicker and better results, with less pressure on the therapist. Since then we have had the most amazing results.”

Sue
Endermospa, Loughton (UK)

BODY ENDERMOLOGIE®

TRIPLE SIMULTANEOUS ACTION
IN A SINGLE TREATMENT

Thanks to the **synergy of two patented technologies**, motorised roll and flap, the new patented treatment head of CELLU M6 ALLIANCE® provides multidimensional tissue mobilisation. This stimulation, both intense and pleasant, **reactivates fat release and improves skin quality simultaneously**.

VISIBLE RESULTS
AS OF 3 SESSIONS!






FIRM THE SKIN
71%*

SMOOTH ORANGE-PEEL
67%*

+70%**
RELEASE LOCALISED
RESISTANT FAT

The new Alliance Skin Identity system enables to precisely adapt the intensity of the stimulation to each skin type depending on the area to be treated. The treatment is **customised** and totally respects the skin.

-  SOFT TISSUE
-  DENSE TISSUE
-  FIBROUS TISSUE



*2016 endermologie® DermScan study.

- After 3 sessions: 71% of women reported an improvement in their skin firmness. After 3 sessions: 67% of women reported a smoothed orange-peel skin aspect
** M. LAFONTAN et al. Impact of Mechanical massage on gene expression and lipid mobilization in female gluteofemoral adipose tissue. Obesity Facts. 2011 ; 4(2) : 121-9

FACE ENDERMOLOGIE®

SKIN FITNESS

Thanks to the combination of skin aspiration and the dynamic motorised flap beats, the Ergolift® treatment head provides a true skin fitness. **Stimulated fibroblasts reactivate their endogenous collagen, elastin and hyaluronic acid production.**

VISIBLE RESULTS
AS OF THE 1ST SESSION!

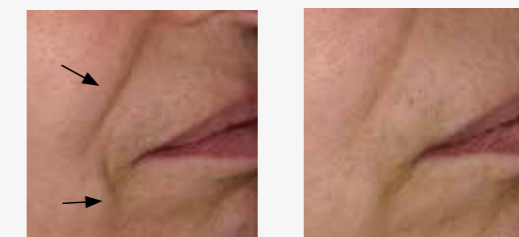


+80%*
ENDOGENOUS
HYALURONIC
ACID

FILL IN
FINE LINES
& WRINKLES
87%*

FIRM FACIAL
CONTOURS
70%*

BRIGHTEN
THE COMPLEXION
X2*



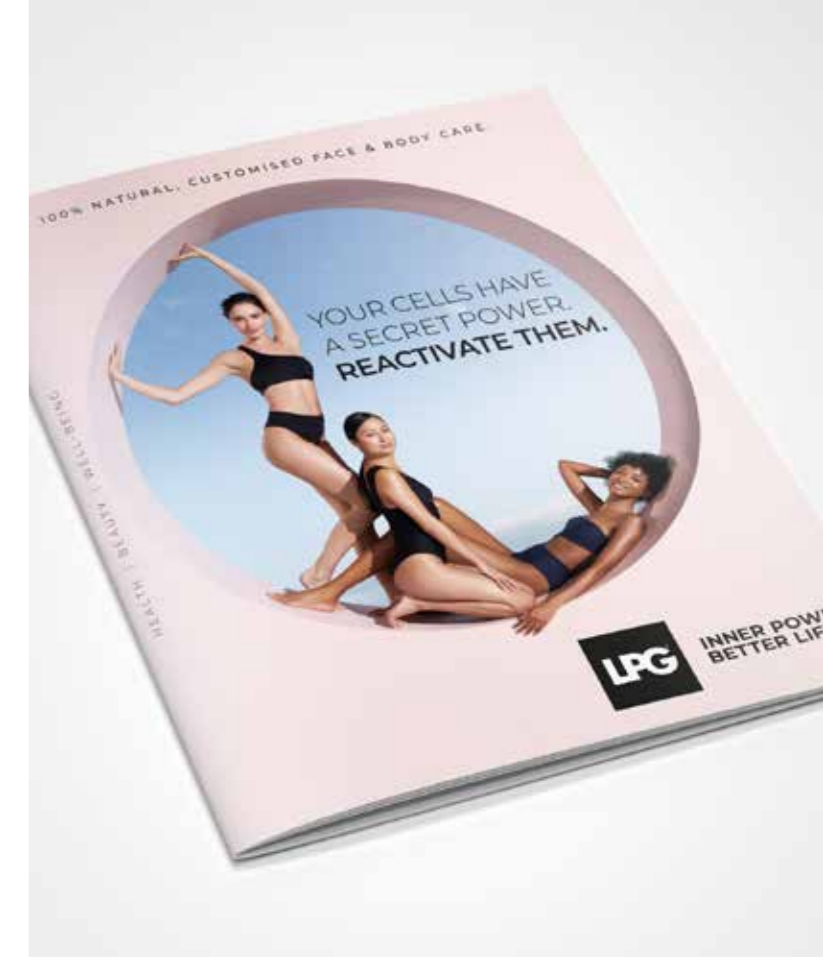
BEFORE AFTER 12 SESSIONS
Photos taken with SSA device (Skin Surface Analyser)

*Humbert P. et al. Clinical Interventions in Aging 2015; 10, 1-17. Scientific study with facial biopsies performed on 20 subjects by Prof. Humbert's Dermatology Department at the University Hospital of Besancon (France).



MARKETING & COMMUNICATION

- Communicate, stimulate your client's interest thanks to a wide range of tools: window stickers, results album, gift vouchers...
- Campaigns, press coverage... Benefit from the awareness of a renowned brand.



THE LPG® GROUP SUPPORTS YOUR SUCCESS

The LPG® Group generously invests in its brand to support your activity. A wide range of tools are regularly developed to build market recognition of the endermologie® treatments and to boost your business.



WEB

- Boost your visibility thanks to our Store Locator referencing on endermologie.com (280,000 searches per year, so 765 searches/day!)
- Facebook, Instagram, YouTube... : a strong presence on social networks.

TRAINING

Develop the expertise necessary to the success of your endermologie® treatments thanks to training modules:

- Expert endermologie®
- endermologie® skincare
- Professional workshops



ENDERMOLOGIE® SKINCARE

Benefit all year round from sales operations to liven up your salon and make additional sales.



A CUSTOMISED SOLUTION



MOBILIFT M6® CONNECT

- APPLICATION: Face beauty
- TREATMENT HEAD: Ergolift®
- DIMENSIONS: 65 x 26 x 31 cm
- WEIGHT: 10.5kg



CELLU M6 ALLIANCE®

- APPLICATION: Body beauty
- TREATMENT HEAD: Alliance® 80
- DIMENSIONS: 61 x 70 x 140 cm
- WEIGHT: 80.5kg



CELLU M6 ALLIANCE® SPA

- APPLICATION: Face & body beauty
- TREATMENT HEADS: Alliance® 80, Alliance® 50, motorised TR30 & Ergolift®
- DIMENSIONS: 61 x 70 x 140 cm
- WEIGHT: 80.5kg

ENDERMOLOGIE® SKINCARE

A range of skincare specifically developed to **optimise the results of face and body endermologie® treatments.**

Each skincare is made up of a synergy of bioactive ingredients **selected for their scientifically-proven slimming and anti-ageing properties.**



ENDERMOSCAN™ APPLICATION ON TABLET

True client follow-up

- Face & body evaluation
- Photo assessment
- Customised programme creation
- Session follow-up
- Connection to your device



TREATMENT HEADS

- ① Alliance® 80 treatment head
- ② Alliance® 50 treatment head
- ③ TR30 motorised treatment head
- ④ Ergolift® treatment head

- **LIFT 10:**
Eye and lip contours, hands
- **LIFT 20:**
Face, neck and décolleté



*Evaluation of the potential effects when the skincare range is combined with an endermologie® treatment: Study on half of the face on 10 healthy volunteers. Prof. P. Humbert, University Hospital Minjoz, Besancon. 2014.

MORE THAN 500 PRESTIGIOUS REFERENCES HAVE CHOSEN THE LPG® BRAND



MONACO - Thermes Marins, Monte-Carlo

UNITED KINGDOM - Harrod's, London

FRANCE - Le Cheval Blanc, Courchevel

THAILAND - Mandarin Oriental, Bangkok

MOROCCO - La Mamounia, Marrakech

CHINA - Four Seasons, Hong Kong

UAE - Atlantis The Palm, Dubai

LPG® UK

The Triangle, 5 Hammersmith Grove - London W6 0LG

Tel: 0204 538 38 05 - E-mail: info@lpg-uk.com

[@LPGdermologie_UK](https://www.instagram.com/LPGdermologie_UK)