



**Sikhâ**<sup>®</sup>  
PROUDLY MADE IN ITALY

*diamond lamellar  
treatment*

**Sikhâ**<sup>®</sup>  
PROUDLY MADE IN ITALY

# *diamond lamellar treatment*

**Mirror effect treatment  
with conditioning/nourishing action  
and repairing effect  
of damaged areas.**



**<< No-rinse spray formula >>**

Ultra-light and super-strengthening,  
it is made up of two products:  
**shampoo** and **lamellar fluid**.

Instantly gives hair a glossy shine,  
adds texture to the shaft and  
restores lost hair constituents.



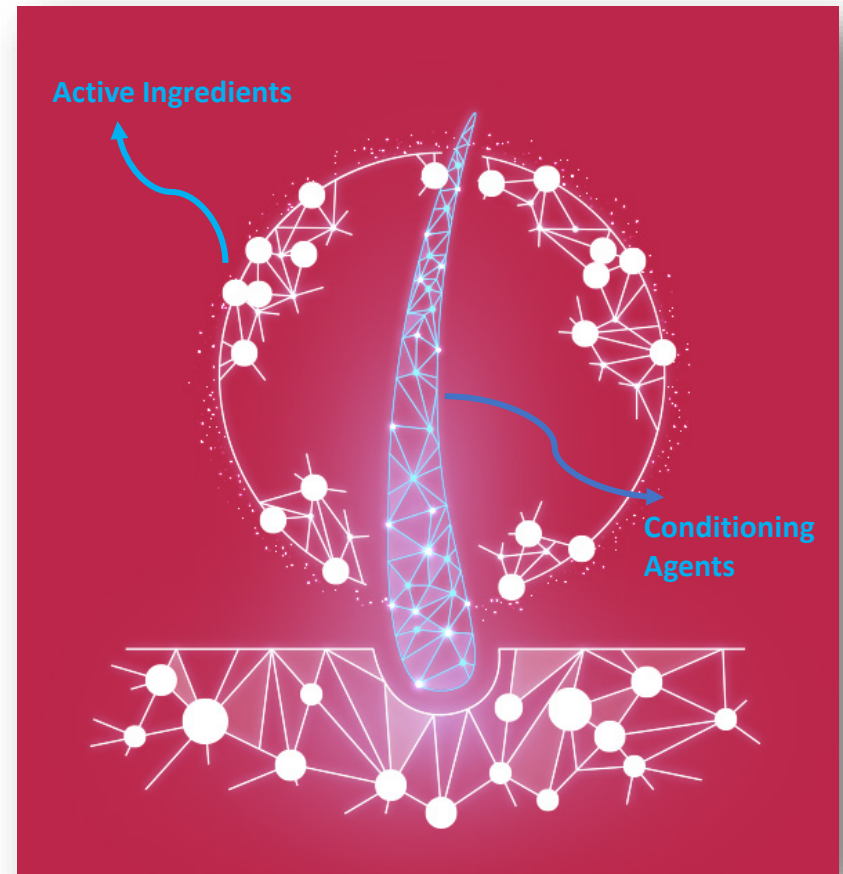
**Sikhâ**<sup>®</sup>  
PROUDLY MADE IN ITALY

## Technology

It uses **the power of lamellae**, small particles capable of penetrating the hair cuticle and repairing damaged areas, more effectively than traditional hair masks.

Working in thin layers, **the formula deposits small active and moisturising ingredients** (for strength and shine) and conditioning agents into the damaged areas. It immediately penetrates the hair shaft, providing an intensified nourishing effect.

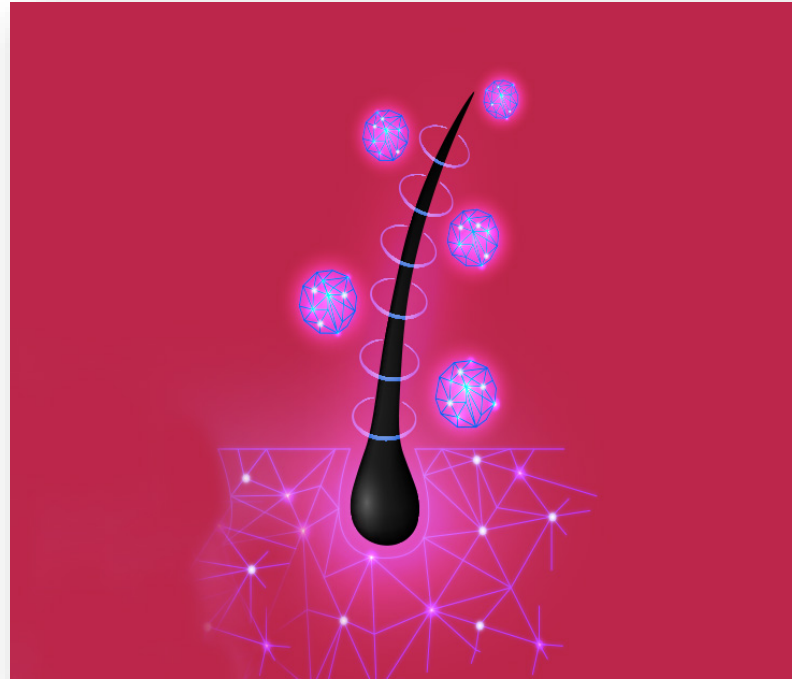
## diamond lamellar treatment



# How it works?

**1-Water** present on the hair fibre **activates the smoothing power of lamellar technology.**

**2-Conditioning substances** get together in a thin lamellar structure that wraps around the fibre, smoothing out irregularities immediately.



**3-**The unique organic/vegan complex in the formula **preserves the integrity** of the hair's lamellar structures.

**4-**This guarantees cosmetic, **protective** and **reconstructive** properties as well as improved hair **volume** and **thickness**.

The hair is **wonderfully shiny**, smooth and manageable in the blow-dry, providing a perfect smoothness.



# Dual function

acting :

✦ **At cortex level (inside):** strengthens and moisturises the surface of the hair, as well as reducing damage due to aggressive chemical treatments, environmental stress and styling practices.

✦ **At superficial level in the cuticle (on the outside):** It triples the strength in the damaged hair by replenishing the natural anti-breakage elements.

Also :

- ✦ Strengthens hair to resist damage caused by comb, hairdryer and brush
- ✦ Protects hair even in very humid weather conditions.

✦ **Gives mirror effect shine** and intense repair to all hair types without weighing it down ( no oily raw materials).

✦ The complex contained within preserves the integrity of the lamellar hair structures.

✦ A treatment, **very quick spray and without rinsing (no leave-on time).**

✦ It is suitable for all hair types and textures

## What does it do?

Makes hair shiny and bright  
with a mirror effect.

Its instant action **detangles**, **smoothes** and makes all hair types visibly healthy, **shiny** and **bright**: natural, coloured or chemical-treated; restoring beauty down to the ends and eliminating frizz.



# HOW TO USE:

## *diamond lamellar treatment*



1. After washing with **DIAMOND LAMELLAR SHAMPOO**, pH 7.5 basic lamellar shampoo, rinse and towel-dry the hair.



2. Apply **DIAMOND LAMELLAR FLUID** by spraying the required amount on the lengths and tips.



3. **Without rinsing**, proceed with the desired styling.

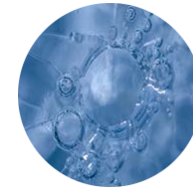
**NB:** We recommend not applying on the day of the technical service in the salon.

# Active Principles :

## *diamond lamellar treatment*



- **Vegetable Glycerine**, for a moisturising action
- **Wheat protein** with fortifying and restructuring properties.



- **Hyaluronic acid** as a mirror-effect plumping agent,
- **Quaternised wheat protein** as a conditioner
- **Vegetable Glycerine and D-Panthenol** for moisturising,
- **Vitamin E** with anti-ageing properties.



# n.22 diamond lamellar shampoo





SLS **Free**

PARABEN **Free**

SLES **Free**

SILICONE **Free**

 Basic Lamellar Shampoo pH7.5 ideal for preparing the hair for treatment with Diamond Lamellar Fluid. It contains **Vegetable Glycerine** for a moisturising action and **Wheat Proteins** with strenghtening and restructuring properties.

 **How to use:**  
Apply to wet hair, massage gently, then rinse out.  
Repeat if necessary.



pH

7.5





250 ml

# n.23 diamond lamellar fluid



SLS <b>Free</b>	PARABEN <b>Free</b>
SLES <b>Free</b>	SILICONE <b>Free</b>
SULFATES <b>Free</b>	

-  Ultra-fast spray leave-in treatment, suitable for all hair types. Provides the hair with a mirror-like shine and repair without weighing down. The innovative formula preserves the integrity of hair lamellar structures. It contains **Hyaluronic Acid** as a mirror- effect plumping agent, **Quaternised wheat protein** as a conditioner, **Vegetable Glycerine and D-Panthenol** for hydration, **Vitamin E** with anti-aging properties.
-  **How to use:**  
Shake before use.  
Apply by spraying to damp, towel-dried hair.  
Do not rinse and proceed to blow-dry.



250 ml