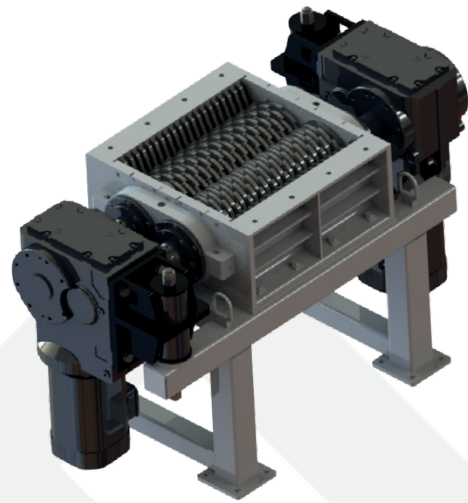


BARRADAS ROTARY SHEAR

BRS 40

MACHINE DATA

| | |
|-------------------------|-----------------------|
| Drive | 2x7.5 kW, 400 V/50 Hz |
| Rotation | 19 rpm |
| Cutting area | 600x400 mm |
| Cutting width | 10-30 mm |
| Number of knives | 20-60 pcs. |
| Dimensions | 1.5 x 0.8 x 2.0 m |
| Weight | 750 kg |



BRS 40

STANDARD EQUIPMENT

| | |
|---------------------------|--|
| Feeding chute | 750x500 mm |
| Substructure | 1000 mm |
| Painting/color | RAL 7004 Signal Grey & RAL 7016 Anthracite Grey |
| Control cabinet | Integrated control panel Siemens Touch Panel |
| Control system | Siemens S7 |
| Cabling | 10 m cable |
| Operating language | German, English, French |
| Instruction manual | German, English, French |

ADDITIONAL EQUIPMENT

| | |
|----------------------------------|--|
| Hopper | Special construction Filling level monitoring Spray system |
| Safety fence | Access control with key transfer system |
| ICS control system | Intelligent Control System |
| On-site control panel | |
| Radio remote control | |
| Remote maintenance router | WAN/GSM |
| Operating language | In local language |
| Instruction manual | In local language |