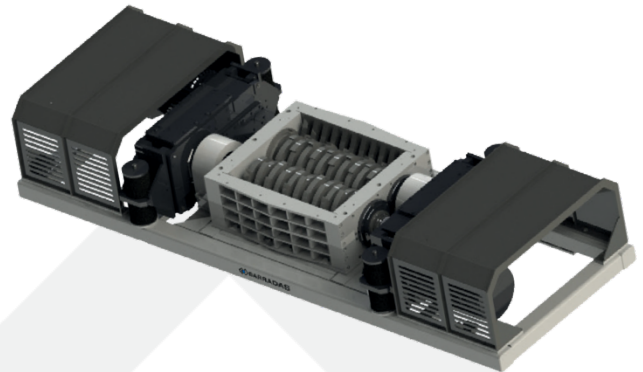


# BARRADAS ROTARY SHEAR

**BRS 110/130**

## MACHINE DATA

<b>Drive</b>	2x75 kW, 400 V/50 Hz
<b>Rotation</b>	16/18 rpm
<b>Cutting area</b>	1300x1100 mm
<b>Cutting width</b>	58 mm
<b>Number of knives</b>	22 pcs.
<b>Dimensions</b>	5.5 x 4.0 x 4.5 m
<b>Weight</b>	23 t



**BRS 110/130**

## STANDARD EQUIPMENT

<b>Hopper</b>	2700x1900 mm
<b>Substructure</b>	1500 mm
<b>Maintenance platform</b>	
<b>Gearbox cover</b>	
<b>Lacquer/color</b>	RAL 7004 Signal Grey & RAL 7016 Anthracite Grey
<b>Control cabinet</b>	Integrated control panel Siemens Touch Panel
<b>Control system</b>	Siemens S7
<b>Cabling</b>	10 m cable
<b>Operating language</b>	German, English, French
<b>Instruction manual</b>	German, English, French

## ADDITIONAL EQUIPMENT

<b>Hopper</b>	Special construction Filling level monitoring
<b>Hydraulic represser</b>	Spray system 7.5 kW incl. oil cooling, Heating optional
<b>Safety fence</b>	Access control with Key transfer system
<b>Drive</b>	2x90 kW, 400 V/50 Hz
<b>lubrication unit</b>	Automatically
<b>ICS Control</b>	Intelligent Control System
<b>On-site control point</b>	
<b>Radio remote control</b>	
<b>Remote maintenance router</b>	WAN/GSM
<b>Operating language</b>	In local language
<b>Instruction manual</b>	In local language