



Benelux INDUSTRIAL VIDEOSCOPE

■ CLEARNESS ■ SHARPNESS ■ BRIGHTNESS



Flexibility Redefined | X750

PRODUCT CHARACTERISTICS



FLEXIBILITY

- Lightweight
- Ergonomic Shoulder Strap and Roll up Tubes
- Interchangeable Probes and Batteries
- One-Hand Operation

CONNECTIVITY

- Wi-Fi, HDMI, USB Type C output supported
- Controllable via VideoscopeNow App
- Exclusive GPS mark on photos for utility

INNOVATION

- Backside Camera with GPS
- Backside LED Flashlight function
- Detachable Screen Module
- Custom Button on Joystick

PRODUCTIVITY

- SESSION/TAG Image Storage Setting
- Comprehensive Photo Annotation Function
- Report Assist Software
- New launched "Insight" report generation & GPS mapping software. (Optional)

DURABILITY

- IP 67 Tungsten Braided Insertion Probes
- 100°C Heat Resistant Camera Tip
- IP 54 Console Unit
- 1m Drop Resistant

TRUE SIGHT

- Super Resolution
- Fine Image Quality
- Advanced Imaging Functions

Flexibility

Designed for portability and versatility

Lightweight

The X750 is extremely lightweight, with the whole system weighing only 1.2 kg.

Ergonomic

The handy design, the shoulder straps, and the roll-up tubes of the X750 allow for one-handed operation.

Flexible

Interchangeable probes and batteries improve productivity and give you the necessary flexibility for even the most complex applications.

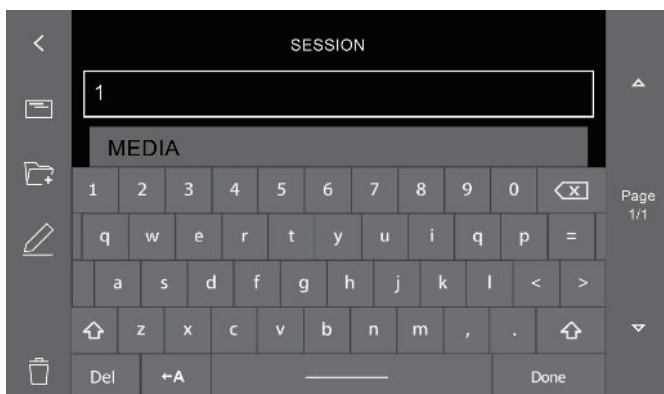
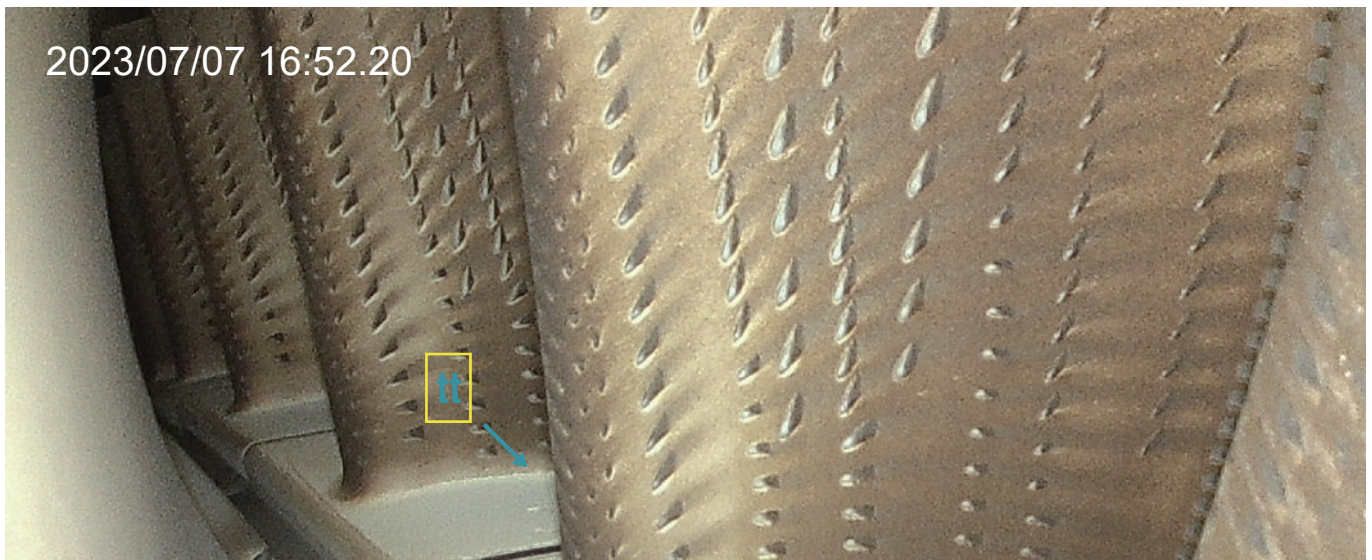


Productivity

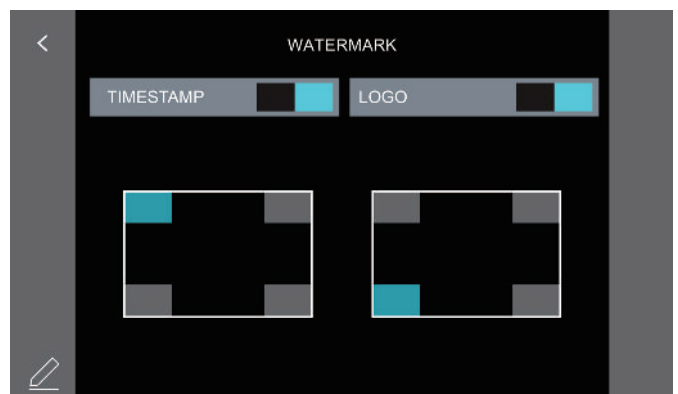
Advanced File Management

The X750's software includes a file management system that allows you to sort photos and videos into session folders. You can write notes or annotations and add them to your images. A compare function enables you to compare the live view image to gallery images.

You can also include logos and watermarks as well as session tags. These functions make keeping track of all your inspections easy and convenient.



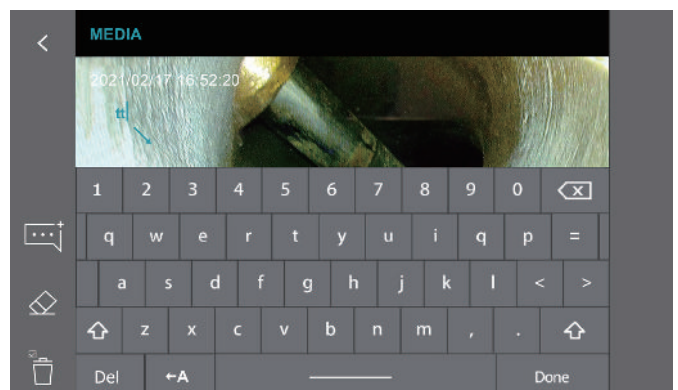
Custom build file folder by "SESSION"



Customize logo



Custom photo overlay text by "TAG"



Editble image annotation

Innovation

Best Image Viewing Experience



5" full-touch screen

The X750 features a 5" high-resolution LCD touch screen that provides an excellent viewing experience.

Manual Exposure

It also features the same manual exposure known from our X2000, which works similar to that of a smartphone. It allows you to adjust the exposure with only one click on the screen. That makes it not only very helpful but also very convenient to use.



Backside Camera

The X750 possesses a powerful Backside Camera on the backside with 2560*1440 pixels giving you the ability to take photos from greater distances. The built-in GPS function allows you to tag images and map them out in our insight software. That creates a better overview in even the most difficult inspections and ensures never getting lost in large areas. (for example, offshore wind farms)



IP54 Water/Dust Proof



Enhanced tube strength release



Carrying tube / tip folder

Enhanced Tube Strength Release

Our insertion probes feature an enhanced tube strength release protecting the tube from overly bending, even when used without the probe stand, and ensures that the articulation works flawlessly.

Carrying Tube / Tip Holder

The holder underneath the probe stand allows you to neatly tuck the probe tube and the probe tip away so that the X750 can easily be operated in one hand or hang onto the neck strap when, for example, climbing ladders or moving in other hard to pass terrain.

IP54 Protection

The base unit of the X750 also offers enhanced protection and is IP54 certified, allowing you to work outside even in harsh conditions.

Durability

Versatile diameter probe & optical tip

Stunning video quality and crisp images, all without compromising probe size or maneuverability. Our new 3.9 mm inspection probes are the combination of a small, flexible design and flawless image quality. The comprehensive features of our X750 system in combination with our new series probes will definitely elevate your inspections.



- 100°C resistance camera tip (6.0 mm tube)
- Ultra-luminance front LED
- IP67 level waterproof and oil proof.



Tungsten & Rigidity
35 cm Straight
Shorter Distal End & Bending Radius

Tungsten Rigidity

All X750 insertion probes are tungsten braided and are waterproof up to 1 m depth for 30 minutes. The natural abilities of the tungsten metal give our insertion probes increased heat (up to 100° C) and extensive corrosion resistance. The strength and density of tungsten extend the probe lifespan significantly, protecting them from scratching or abrasion.

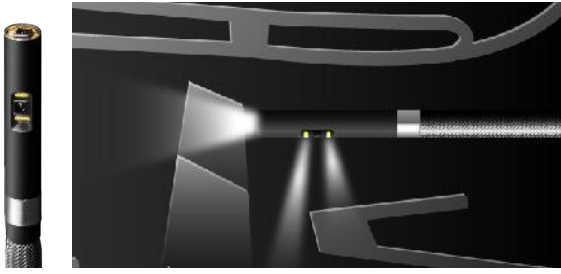
Shorter Distal End & Bending Radius

The bending angle is crucial to ensure maneuverability within the object and to enhance the field of view. Therefore, our insertion probes offer a shortened distal end and a bending angle of up to 140° and are available in 3.9 mm and 6.0 mm diameters.

Dual Light Sources & Mirror Adapters

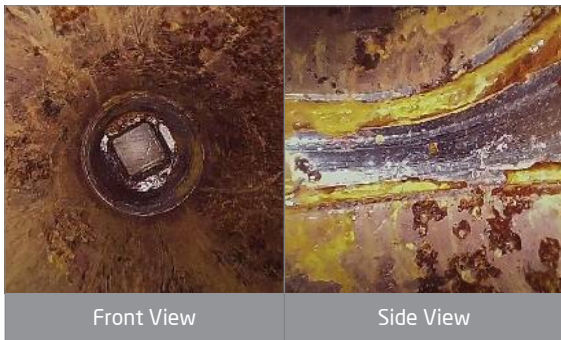
6.0 mm probes come with front & side LEDs that brighten even the darkest spots during an inspection and are compatible with our side-view and dual-view mirror adapters.

3.9 mm Dual View



Dual LED Setup

Light distribution is crucial to avoid glare spots and reflections. For that reason, the side view camera has two LED light sources, one below and one above the camera lens, allowing for evenly distributed light in any situation.



Clear Vision & Sharp Photos

Nothing is more important than to have a clear view and sharp images during an inspection. That is why the 3.9 mm dual view boasts two powerful cameras that will give you a perfect overview and leave no flaw undetected.

- HD resolution
- Wide FOV of 120°
- DOF of 5 mm~100 mm

6.0 mm Dual View

Rugged & Durability

- IP67 waterproof
- 100°C resist & High temperature warning
- Unyielding to scratches and corrosion



Outstanding performance for dual view inspection

6 mm is the most popular size probe of video scopes for the reasons of best developed optical technology.

The new 6 mm dual camera tip equipped with enhanced LEDs that provide 30% up illumination than conventional probe. 1 second switch between front/side views along with so sacrificed image quality is now presented !

Crisp high resolution image quality output

2560*1440 high resolution images recorded on both dual cameras. The side view camera is fine tuned to 7 mm near focal length that especially practical to tube wall side defects inspection.

- FOV: front & side camera 95°
- DOF: front camera 8 mm~∞/ side camera 7 mm~∞



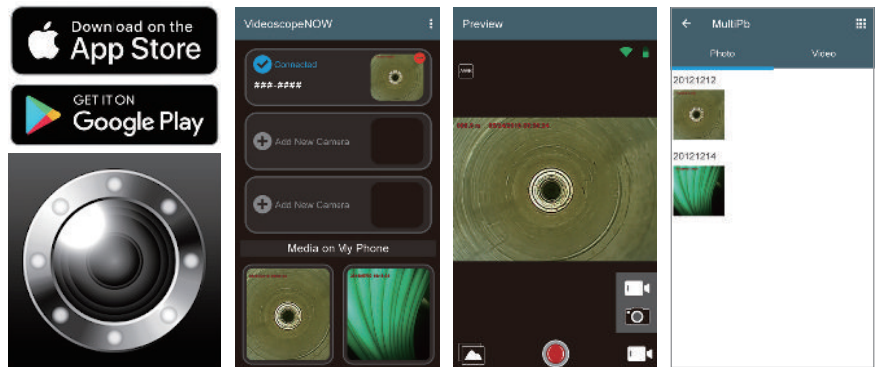
Connectivity

Benefit from multi-connection Solutions



Comprehensive Solutions Controllable Via App

The X750 can link with mobile devices via our VideoscopeNow App. The app lets you control the X750 remotely and download photos and videos onto your device.



From the Site to the office:
Improve your inspection workflow



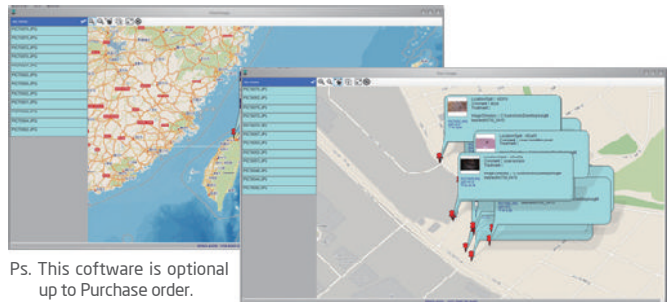
Report Generation

Generate reports in just 4 steps. Review images and add comments within a well-integrated work process. It significantly improves the workflow and reduces the time needed to sort through large numbers of images.



Location Management

Keep an overview of all inspected objects in large projects. Images can be GPS tagged and laid out on a map. There, you can easily see different locations, the associated photos, and comments made to these photos.



Ps. This software is optional
up to Purchase order.

Trolley Case & Accessories



1 Lithium-ion Batteries:

Quickly removable batteries; that provide 3 hours of operation each.

2 Probe Adapters:

The X750 comes with a Side View and Dual View Mirror adapter as well as a Pin adapter for measurements. (Only for 6.0mm probe)

3 Accessory Box:

A variety of different power adapters are available to recharge your X750. A mini-HDMI cable, EMI core*4(detachable for USB or HDMI cable's connector ends), a USB Type-C cable, a memory card, and a cleaning kit are also part of the package.

4 Neck Strap:

The X750 comes with a detachable neck strap that can be easily attached or detached.

5 Rigid Sleeve:

Rigid sleeves are available for 6.0mm and 3.9 mm probes. Each rigid sleeve comes with an additional extender for the sleeve.

6 Trolley Case:





The trolley case is lightweight and dust, and waterproof. It is rugged and ensures that your X750 stays safe during your travels.

Specifications

Base Unit	
Dimension	L=327.5mm W=152.8mm H=201.3mm
Weight	1230g (w/2m tungsten tube)
Water Resistance	IP 54 (whole set assembled)
Display	5 inches / detachable touchscreen / 800*480 resolution
Function Buttons	Power ; Reset (pin button)
I/O Port	Micro-SD memory card slot USB Type-C (power in/data out) Mini-HDMI (Av output)
Tip Temperature on screen	60°C / 80°C / 100°C - 3 Level Warning
Wi-Fi	802.11 b/g/n
App	VideoscopeNow
LED Indicators	Green - working / fully recharged Red - low power / recharging
Microphone	Built - in (on/off switch in settings menu)
BacksideLight	LED
BacksideCamera	2560*1440 .JPG
GNSS	GPS, GLONASS Dual Mode
Joystick	
Articulation	Full ways mechanical control
Function Buttons	4 Buttons: Brightness + / Brightness - / Snapshot /Record / Custom Self - Definition
Articulation Control	Joystick/ Lock - Stop & Go
Battery (One Piece)	4900mAh replaceable Li - ion Battery
Working Time	3 Hours of Operation (with 2 m/ 3 m; decrease with longer probes)
Working Temperature	Battery powered : -10°C~45°C. Battery charging: 0°C~40°C
Battery /Charger Set	
Dimension	117.5*76.8*69.7 mm
Weight	Full Set (Batteries w/ Charger Set): 393g; Battery 113g; Charger Set: 165g
Charging Time	6 Hours for 2 Batteries / 3 Hours for 1 Battery
LED Indicator	Red: Charging / Green: Fully Charged

MIL-STD compliance

Item	Standard (Method)
Explosive Atmosphere Test	MIL-STD-810G w/Change 1, Method 511.6 , Procedure I
Vibration Test	MIL-STD-810H , Method514.8 Test Procedures I
Drop Test	MIL-STD-810G_CHG-1, Method 516.7 Test Procedure IV , Table 516.7

360° Articulation Probes					
Options	60D4W-F_TU-M	60D4W-F_TU-F	60D4W-FS_TU-M	39D4W-F_TU-M	39D4W-FS_TU-M
					
Probe head diameter	6.0 mm*		6.0 mm*	3.9 mm*	3.9 mm*
Probe length options	2 m / 3 m / 5 m / 7 m		2 m / 3 m / 5 m / 7 m / 10 m	1.5 m / 3 m	1.5 m / 3 m
Probe head length	19.3 mm		2 m / 3 m: 21.5 mm 5 m / 7 m / 10 m: 24.4 mm	13 mm	21.6 mm
Direction of view	Front view		Front + Side 90°	Front	Front+Side 90°
Illumination	Front / Side LEDs		Front / Side LED	Front LED	Front / Side LED
Mirror adaptor	Side / Dual view		n.a	n.a	
Field of view (FOV)	90°		95°	120°	
Depth of Field (DOF)	10 mm~100 mm	25 mm~∞	2 m / 3 m: Front: 8 mm~∞ Side: 7 mm~∞ 5 m / 7 m / 10 m: Front: 8 mm~∞ Side: 5 mm~200 mm	5 mm~100 mm	5 mm~100 mm
Still image resolution (.jpg)	2560*1440		(Dual) 2560*1440	1600*1600	(Dual) 1600*1600
Video resolution (.mov)	2560*1440		(Dual) 2560*1440	1600*1600	(Dual) 1600*1600
Articulation angle**	2 m / 3 m: full ways ≥ 120° 5 m / 7 m / 10 m: full ways ≥ 80°			Full way >140°	Full way >120°
Operating temperature	In air: -10~100°C ; In water: 10~30°C				
Probe head material	Stainless Steel				
Probe material	Tungsten braid				
Joystick console dimensions	(WxDxH) 139.4x193x84.2 mm (w / o SR and insert tubes)				
Joystick console buttons	Brightness+, Brightness-, snapshot / record				
Lock and move	Joystick / Unlock switch on console				
Dust and water proof	Joystick console: IP54 ; Insert tube: IP67				
Relative humidity	Max 95% non-condensing				
Liquid resistance	Operable when exposed to machine oil, light oil or 5% saline solution				
Storage temperature	-10°C~70°C				
Rigid sleeve	for 6.0 mm probe			for 3.9 mm probe	
	OD: 8 mm / ID: 7 mm Protection: OD: 10 mm Extension joint ring: OD: 11.2 mm			OD: 6 mm / ID: 5 mm Protection: OD: 8 mm Extension joint ring: OD: 8.6 mm	
	Grip material: Rubber / Aluminum / Plastic; Tube material: Stainless steel Stainless tube length: 450 mm per section. (Grip not included)				

* O.D. Tolerance: 6.0 mm: ±0.09 mm / 3.9 mm: ±0.15 mm.

** The maximum articulation angle may degrade over time.



Are you ready to take your inspection to a new level?



Opticon Benelux Naarden B.V. - Kobaltstraat 5B - 1411 AM Naarden - Nederland

T: +31 (0) 35 69 53 991 - www.opticonbnl.com - info@opticonbnl.com