

22-12-2014



EFCON[®] water
EFFLUENT CONTROL SYSTEMS

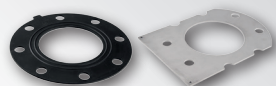
Flow
Level
Pumps
Analytic
Samplers

Billing purpose seal

Body electronics	Aluminum
Sensor	Casted steel DIN Flange with PTFE Lining
Electronics	Compact version
Output	Pulse Output / 4-20 mA Output
Display	7 numbers, 8 digits totalizer
Accuracy	± 0,5%, ± 1%
Power	230 VAC - 50 HZ
IP class	IP 65 in Compact version IP 68 in Separate version
Lining	-40°C to + 95°C
Electronics	-25°C to + 55°C
Electrode	3x AISI 316
C-Factor	Max 3%

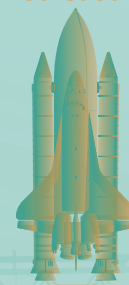
**No moving parts and
no obstruction in the meter.**

**Don't gamble, use proper
full body grounding and
gasket set (plastic pipework).**



**Display with Actual & Total Flow,
Pulse & Analog Output.
7 numbers & 8 digits totalizer.
Empty Pipe detection.**

***It's a Magmeter,
no Rocket Science !***



**PTFE Lining
for minimum fouling
and easy (cip) cleaning.**



EFCON[®] Compact Electro Magnetic Flowmeter (EMF)

Efcon[®] EMF meters have minimum fouling PTFE lining, empty pipe detection, display with actual & total flow, pulse & analog output. Because of the high accuracy EMF meters are commonly used for effluent discharge purposes of water & sewage.

BE AWARE!

For EMF meters the 'diameter selection' is most important!
Select correct EMF meter 'diameter' with appropriate flow velocity!

Recommended minimum flow velocity: 0.05 m/sec
Accuracy +95% starting at: 0.10 m/sec
Accuracy +98% starting at: 0.50 m/sec up to 10 m/sec
Avoid flow velocities above 5 m/sec due to air inclusion risk at high flow rates.

Efcon[®] Flowmeters are made, just like many other hightech parts such as phones and many well known electronics, in China. By standardizing stock and batch purchase Efcon[®] focuses on offering superior price/quality products.

Efcon[®] Water b.v. | www.efconomy.com

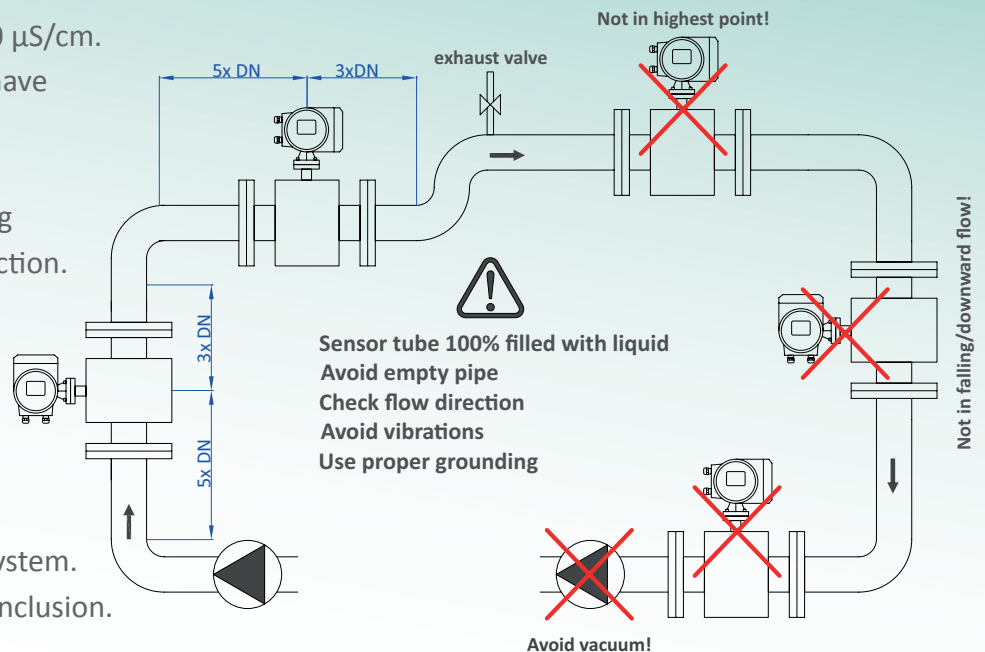
Nieuweweg 3B | 4126 RN Hei- en Boeicop | The Netherlands | Phone : +31 347 342 777 | info@avm-efcon.nl

Be aware of the following installation requirements

- Minimum fluid conductivity: 50 $\mu\text{S}/\text{cm}$.
- Pure rain and demi water can have insufficient conductivity.
- Free of air inclusion.
- Use proper gaskets & grounding when making the flange connection.

Don't install

- In or after a downward flow.
- At the highest point in a pipe system.
- In pipe systems not free of air inclusion.
- In vibrating conditions.



Dimensions Compact Type

Full Body Gaskets

Don't gamble, use a proper full (SS316) body grounding and (EPDM) gasket set for plastic piping.



	max work		Q				Compact
DN	pressure	L	1 m/s	D	K	n-øA	Weight
mm	(bar)		M ³ /h				(kg)
40	25	150	4,5	150	110	4-ø18	13
X 50	25	200	7	165	125	4-ø18	15
65	25	200	12	185	145	8-ø18	16
X 80	25	200	18	200	160	8-ø18	19
X 100	10	250	28	220	180	8-ø18	23
125	10	250	44	250	210	8-ø18	27
X 150	10	300	65	285	240	8-ø22	33
200	6	350	112	340	295	8-ø22	51
250	6	400	176	395	350	12-ø22	70
300	6	500	254	445	400	12-ø22	102

X Standard stock items. Sizes up to 2000 mm.

Efcon® Water b.v. | www.efconomy.com

Nieuweweg 3B | 4126 RN Hei- en Boeicop | The Netherlands | Phone : +31 347 342 777 | info@avm-efcon.nl