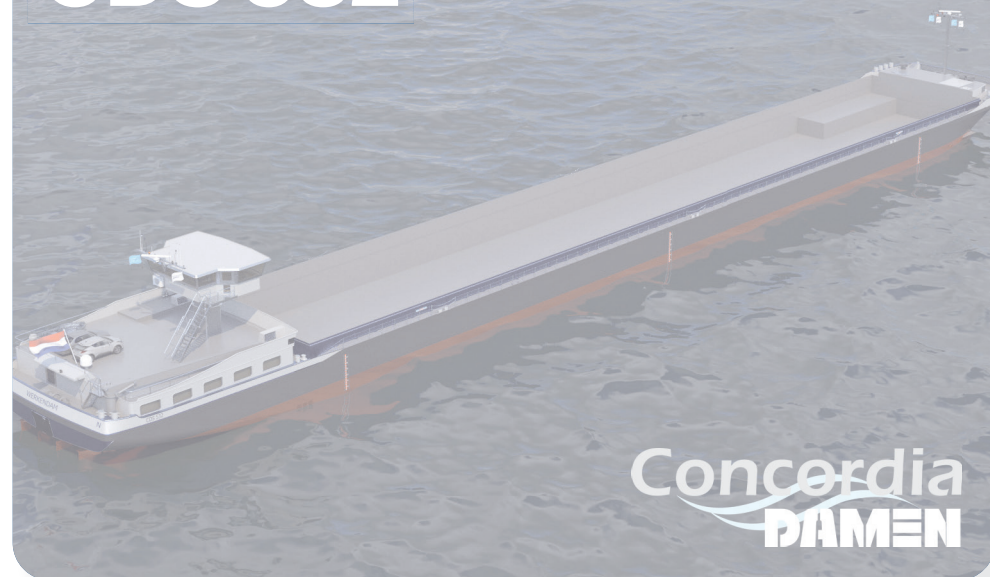


CDS 532



Concordia Damen's 'CDS Dry Cargo 532' is a reliable, efficiently designed inland waterway vessel with an optimised hull shape that results in considerable fuel savings, while providing space for more tonnage at the same time.

532

TEU 5 layers

6780

tonnage max. draft

3.75

meter draft @ max. tonnage



CDS532

The 135 x 17.20 m (container or bulk) vessels can transport more tonnage and sail faster with lower fuel consumption, leading to lower (CO₂) emissions and more earning power than comparable vessels.

In addition to low water resistance, the design is adaptable to (or preparable for) future propulsion and fuel types, such as full-electric or hydrogen-electric propulsion.

In a time when more and more shipowners aim to contribute to sustainable, yet affordable shipping, the CDS Dry Cargo 532 is the perfect choice to sail the inland waterways.



CDS532

Type
Technology
Class

Inland Waterway Container Vessel
Hybrid / Diesel / Battery Electric
Lloyds / BV A1 IVW ADN 24 HR

Principal dimensions

Length overall
Beam overall
Depth at sides
Draft

135.00 m
17.20 m
5.00 m
3.75 m

Loading capacities

Stack load
TEU 5 layers
TEU 4 layers
Tonnage max. draft
Tonnage 3.0 mtr
Tonnage 2.5 mtr
Tonnage 2.0 mtr
Minimum draft

90 tons
532 TEU
424 TEU
6780 tons
4600 tons
3500 tons
2400 tons
1.45 m

Power E-propulsion

Aft ship
Propellor
Rudders
Bow thruster
Bow thruster system

2x 900 kW permanent magnetic
1700 mm in nozzle
2x 2 hydraulic driven
2x 650 ekW e-motor
2x Grid 1400 mm

Tank capacities

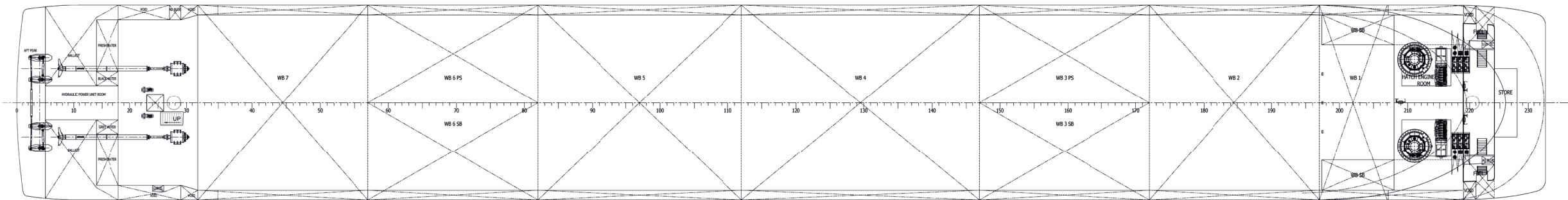
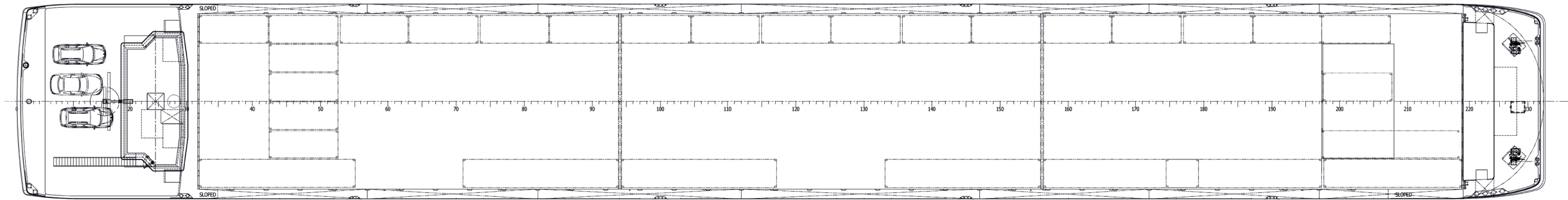
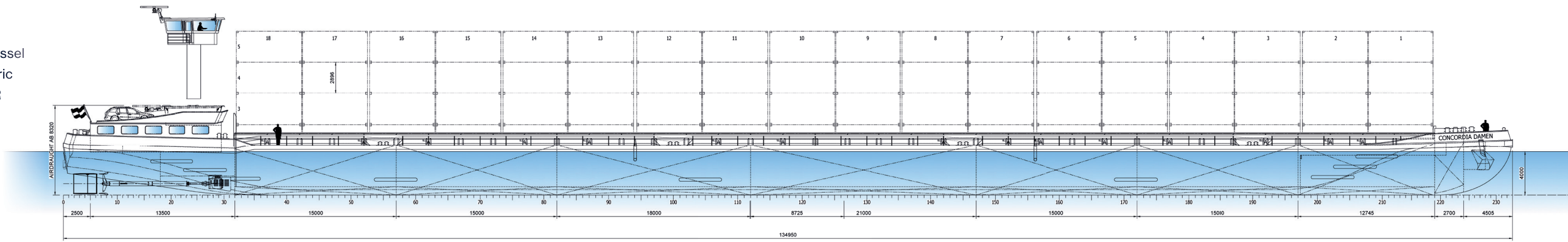
Fuel oil
Fresh water
Lube oil
Ad blue

bow 2x 15 m³ + aft 2x 15 m³
2x 5.5 m³
bow 2x 1,4 m³ + aft 1x 1 m³
bow 2.3 m³

Power generators

Aft generator
Front generator
Battery (optional)

1x 45 kW
2x 600 kW + 1x 300 kW
370 ekW



Concordia
DAMEN

WHERE VISION MEETS REALITY

concordiadamen.com



Concordia Damen

Concordia Damen designs and builds inland waterway vessels with an innovative and cost-effective profile, both for (smaller) family-owned shipping companies and multinationals looking to optimise their port and river logistics. Additionally, we are a reputable shipbroker, supplying owners with selling or purchasing services.

Down-to-earth-management, a contemporary view on shipping and a track record of 250+ vessel deliveries enable us to successfully build and broker for clients worldwide.

High quality, innovation and efficient shipbuilding is the Concordia Damen trademark. We can effectively process new developments into our services – and your newbuild.

Concordia
DAMEN