

5D



“Hi, I’m
iTero Element 5D.
And I add a
new dimension
to dental care.”

iTero element **5D**

Give your practice a new dimension



Propel your practice into new dimensions, with the iTero Element 5D imaging system.

See beyond the current spectrum of what's possible for diagnostic aid, patient engagement and digital workflow. Introducing the first integrated dental imaging system that simultaneously:

- Aids in detecting proximal caries through near-infrared images without harmful radiation
- Records 3D impressions and real colour photographs
- And enables tracking of changes in oral health over time and treatment outcome simulation



Proximal caries detection aid



No harmful radiation



Intraoral camera



3D digital impressions



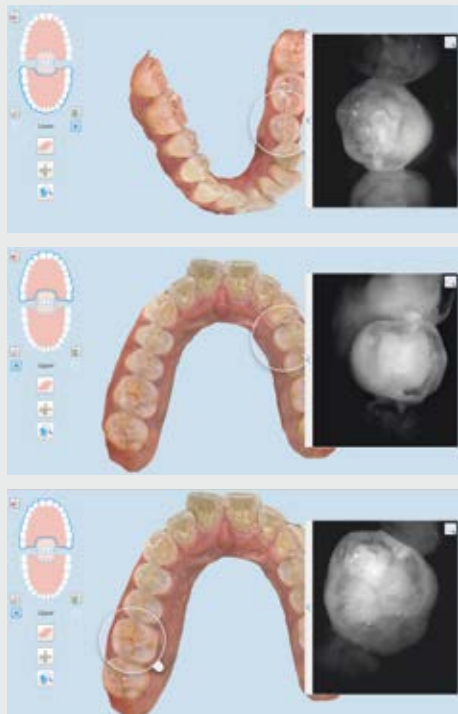
Real-time TimeLapse



Simulation capability

Go beyond what **the eye can see.**

Near-infrared imaging (NIRI).



Real-colour photographs.



Introducing the first 3D intraoral scanner that can distinguish internal tooth structure and aid in caries detection.

Scan your patients' teeth in real time and watch as iTero Element 5D's **near-infrared imaging (NIRI)** technology reveals the internal tooth structure and any interferences without using harmful radiation.

- Aids in detecting and monitoring proximal caries by scanning at every routine appointment, without using harmful radiation
- Distinguish enamel and dentin structure for even better prosthetic design
- Support your diagnostic capabilities for comprehensive preventive and restorative oral care

Optimise your restorative workflow.

Elevate your dental expertise with
iTero's comprehensive imaging system.

Change the way you run your practice with a system that helps improve efficiency, processes and outcome. Identify the need for in-chair prep alterations, project the fit per material type, or re-scan for model accuracy without recalling the patient.

- Leverage a network of over 3,000 labs worldwide
- Send restorative STL files directly to your lab or have our team of qualified technicians clean and prepare your scans for you
- Export scans directly to compatible chairside CAD software

Over 3.2 million
restorative scans
performed worldwide¹



Crowns



Bridges



Implant
abutments



Veneers



Inlays



Onlays

Enter a new era of **patient communication.**

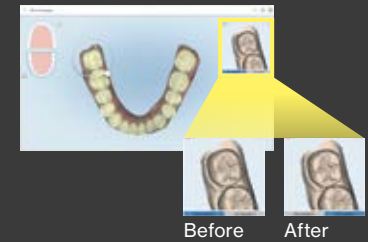
Get patients more involved in their oral health and improve the routine visit process.



Visualise your patient's past...

Changes in oral health can be hard to monitor over time, and even harder to illustrate without clear visuals to support. Enable proactive discussion of treatment options with **iTero TimeLapse** technology.

iTero TimeLapse in color expressing signs of tooth wear.



...present,

Scan at every visit to collect comprehensive digital records. Use the dynamic 3D display and real-colour photographs to support diagnosis and education on oral health.

Analysis instruments such as the occlusal clearance tool.



and future potential smile.

Show patients what their teeth could look like after tooth movement with the **Invisalign Outcome Simulator**. Then use the **Invisalign Progress Assessment** tool throughout treatment to inspire confidence and motivate compliance with a tailored plan.

Invisalign Outcome Simulator.



1.5x more Invisalign treatment patient starts with the Invisalign Outcome Simulator²



The **iTerio Element 5D** imaging system joins the iTero portfolio to give you more choices than ever.

Find it in both wheel stand and laptop configurations.³

Features	iTerio Element 5D (wheel stand configuration)	iTerio Element 5D (laptop configuration)	iTerio Element 2	iTerio Element Flex	iTerio Element
Rapid, colour scan with autocalibration	■	■	■	■	■
Comprehensive restorative and implant workflows	■	■	■	■	■
Chairside CAD and milling collaborations	■	■	■	■	■
TimeLapse visualization	■	■	■	■	■
Optimised Invisalign integration	■	■	■	■	■
NIRI technology	■	■			
Intraoral photograph functionality	■	■			
Next-generation computing power	■		■		
Expanded 21.5" touch widescreen	■		■		
Integrated battery for uninterrupted scanning	■		■		
Laptop connectivity		■		■	
Custom-designed carrying case		■		■	

iTero element 5D

iTero.com

The iTero Element 5D scanner is not available for sale in the United States. iTero Element 5D is currently available in: Canada, European Union, and any other country that accepts CE marking (EU, except Greece, including Switzerland and Norway), including Australia, New Zealand and Hong Kong.

Align Technology BV
Arlandaweg 161, 1043 HS Amsterdam, The Netherlands.

©2019 Align Technology, BV. All rights reserved. Invisalign, iTero, iTero Element, the iTero logo, among others, are trademarks and/or service marks of Align Technology, Inc. or one of its subsidiaries or affiliated companies and may be registered in the U.S. and/or other countries. 207876 Rev A

- ¹ Data on file at Align Technology as of January 1, 2019. Over 3.2 million restorative scans performed worldwide on the iTero Element, iTero Element 2, iTero Element Flex, HD2.05, HD2.1, HD2.9 and HDU scanners.
- ² Based on a survey of n=60 general dentists (from U.S., Canada, and U.K. in July 2018) who used the Invisalign Outcome Simulator in the past year and were asked to compare the percentage of patients that started Invisalign treatment in their practice for those patients in which the Invisalign Outcome Simulator was shown versus patients in which a simulation was not shown. Survey doctors owned either the iTero Element, iTero Element 2 or iTero Element Flex scanner.
- ³ The user must purchase a laptop separately. For an updated list of recommended laptop models, please refer to iTero.com or contact your local iTero sales representative.