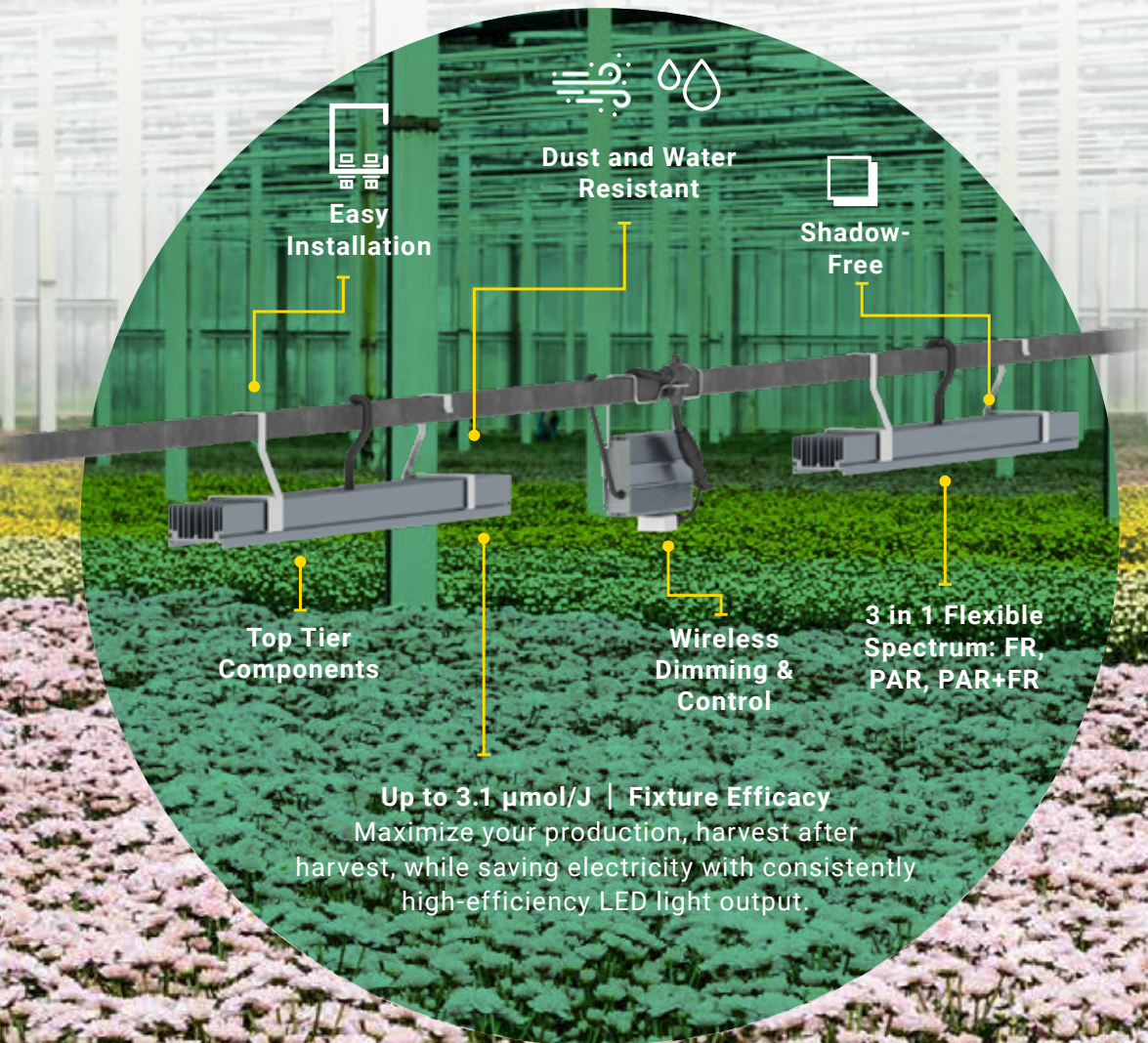


NEW!



MITRA FLEX

A Flexible Far Red Light for Targeted Crop Strategies



Visit www.heliospectra.com for more information on the MITRA Flex solution

MITRA Flex

FLEXIBLE FAR RED | WIRELESS DIMMING | 3 IN 1 SPECTRUM



PHYSICAL	MI65XR40, MI65XR40F, MI65XR60, MI65XR60F, MI65XR80
Weight	8.8 kg (19.5 lbs)
Measurements	1040 x 96 x 66 mm 41 x 3.8 x 2.6 in (LxWxH)
Mounting	Chain-bracket* or C-bracket*
Temperature	Operating: -10-45°C (14-113°F) Storage: -20-70°C (-4-158°F)
Humidity	10-95% RH
Heat Value (incl. PSU)	Max: 2290 BTU/h
IP Rating	IP66
Lifetime (Q90)	>54 000 h
Cooling	Passive - Convection cooled
Beam Angle	120°
Housing Material	Anodized aluminum heatsink Highly transmissive silicone coating SJOW cables and PA66 connectors
Compliance	CE, UKCA, cETLus, and Damp Location
Warranty	5 years

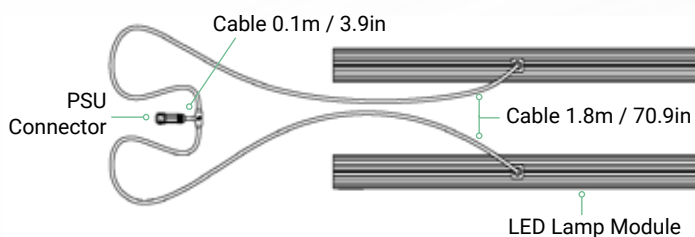
*Available as part of a mounting kit

CERTIFICATIONS

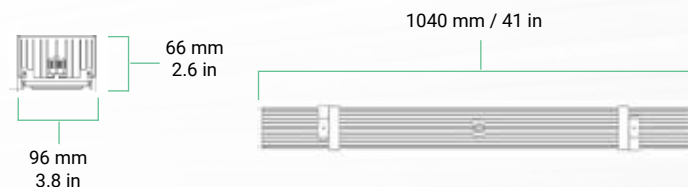
Pending Certifications






FIXTURE DIMENSIONS



Maximum distance between LED Lamp Modules: 3.4m / 11.2ft



MOUNTING SOLUTIONS

MITRA X Chain-bracket (MIKIT01)		MITRA X C-bracket (MIKIT02)	
 4 x		 4 x 2 x	
Components	4 pcs Chain-bracket	Components	4 C-brackets, 2 C-hooks
Weight	170 g (6 oz)	Weight	200 g (7 oz)
Maximal chain diameter	3 mm (0.12 in).	Inner width of bracket	42 mm (1.65 in)
MITRA X Center Profile (MIKIT03)			
 1 x 2 x		Components	2 C-hooks, Center Profile
		Weight	580 g (7 oz)
		Inner width of bracket	42 mm (1.65 in)

ELECTRICAL	MI65XR40FLEX, MI65XR60FLEX	MI65XR40FLEX , MI65XR60FLEX
PSU	EUM-680S15AM	ESM-680S15AM
Input voltage range	90 - 305VAC	249 - 528 VAC
Input current range	2.3 - 5.6 A	1.4 - 2.4 A
Frequency	50/60 Hz	50/60 Hz
Power factor	> 0.98	> 0.97
THD	< 10%	< 10%
Dimming	ADEPHI WIFI/LORA	ADEPHI WIFI/LORA

(!) Values are pending awaiting 3rd party verification.

CONTACT HELIOSPECTRA:

SE: +46 31 40 67 10 NA: +1 888 942 4769
sales@heliospectra.com www.heliospectra.com

©Heliospectra AB
All rights reserved
Ver. 1.0



[FOR HORTICULTURE USE ONLY]



MITRA Flex

FLEXIBLE FAR RED | WIRELESS DIMMING | 3 IN 1 SPECTRUM

(!) Values are pending awaiting 3rd party verification.

SPECTRUM & OUTPUT

OUTPUT	helioSPEC R40FLEX	helioSPEC R60FLEX
Products	MI65XR40FLEX	MI65XR60FLEX
Power (W)	650	660
Light PAR output ($\mu\text{mol/s}$)	1867	1593
Light FR-RED output ($\mu\text{mol/s}$)	-	255
Light combined output ($\mu\text{mol/s}$)	-	2058
Efficacy ($\mu\text{mol/J}$)	-	3,1

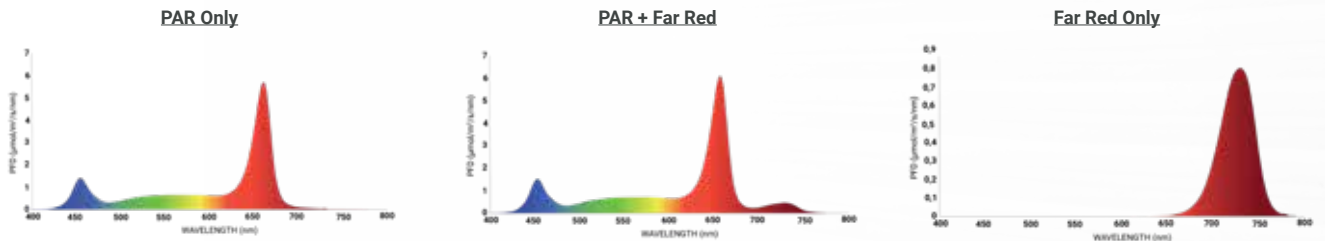
Wireless dimming & helioCORE compatible

Automate and control light intensity, divide into growth zones, and set DLI targets to gain consistency, energy savings, and high quality crops year-round with the Adelphi connector and helioCORE light control systems.

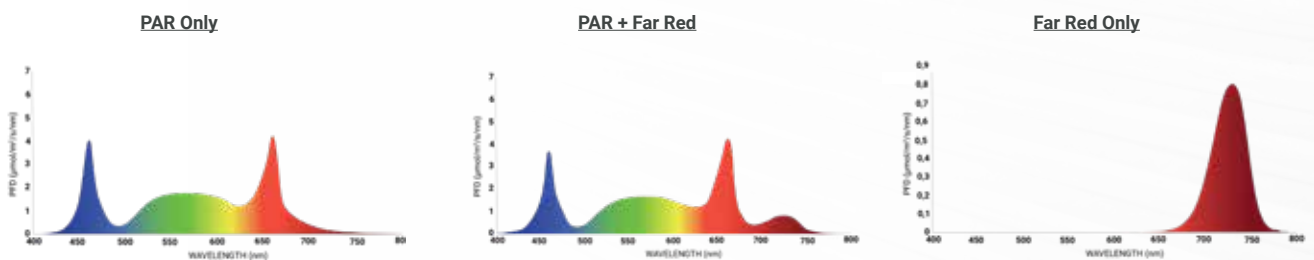


AVAILABLE SPECTRUM

helioSPEC R60 Flex



helioSPEC R40 Flex



Targeted Crop Strategies with flexible Far Red

MITRA Flex allows growers to use targeted crop strategies with its flexible Far Red by combining three spectra in one without losing power. Allowing it to cater to a wide variety of crops and crop stages. Applications include;

- End of day Far-red treatments
- Far-red enriched spectrum for end of production or full crop cycle
- Inducing flowering, increase the number of flowers
- Speed up Growth
- PAR only for crop production, and vegetative phase



CONTACT HELIOSPECTRA:

SE: +46 31 40 67 10 NA: +1 888 942 4769
sales@heliospectra.com www.heliospectra.com

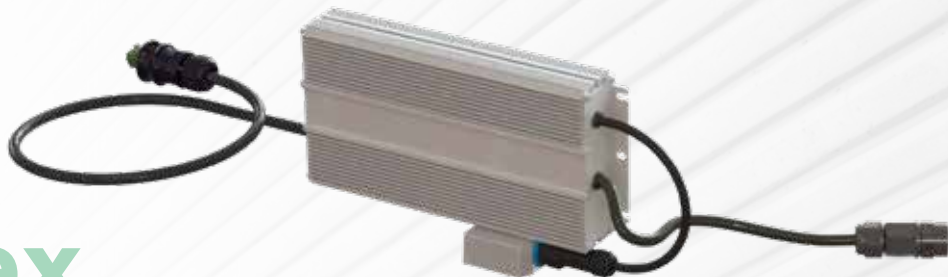
©Heliospectra AB
All rights reserved
Ver. 1.0



[FOR HORTICULTURE USE ONLY]

MITRA Flex

PSU OPTIONS AND TECHNICAL OVERVIEW



PHYSICAL

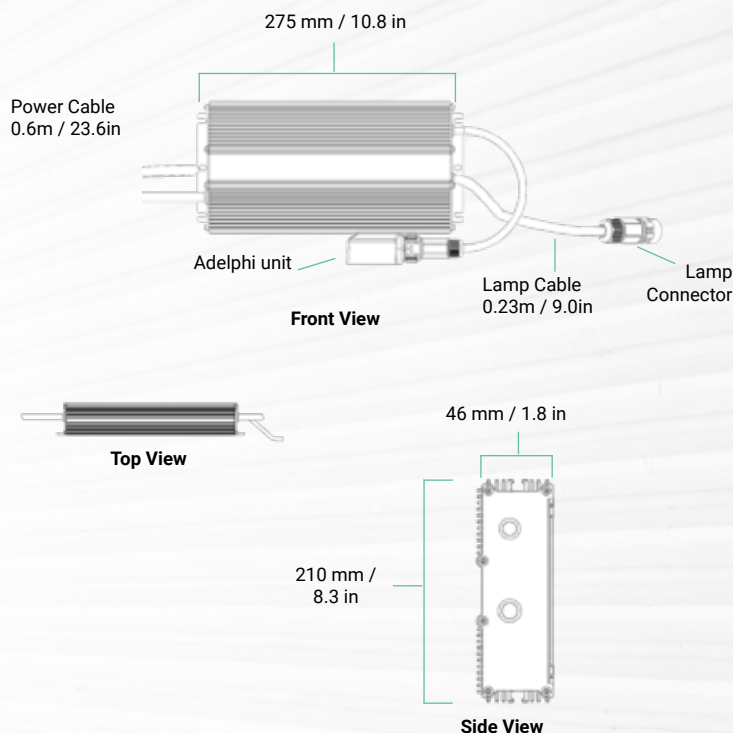
Size	275 mm x 135 mm x 46 mm in (L x W x H)
Weight	3 kg (6.6 lbs)
Mounting	C-hook*

* Available as part of mounting kit

GENERAL

Temperature	Operating: -10-45°C (14-113 F) Storage: -20-70°C (-4-158 F)
Humidity	10-95% RH
IP Rating	IP66, IP67
Lifetime	EUM-680S15AM: 67 000 h ESM-680S15AM: 50 000 h
Dimming	ADELPHI WIFI / LORA
Cooling	Passive - Convection cooled
Housing Material	Anodized aluminum PSU SJOW cables and PA66 connectors
Cable Lengths	Power cable: 0.6 m / 23.6 in Lamp cable: 0.23 m / 9.0 in Dimming cable: 0.31 m / 12.2 in
Plug-options	Wieland RST20i3
Compliance	CE, UKCA, cETLus, and Damp Location
Warranty	5 years

PSU DIMENSIONS



MOUNTING SOLUTIONS

MITRA X PSU HANGER



Components	1 pcs PSU Hanger
Weight	80 g (2.8 oz)
Inner width of c-hook	42 mm (1.65 in)



Adelphi Wireless Connector

True wireless dimming and control in your greenhouse

Built for a large scale greenhouse installations, the Adelphi is a wireless communication module used for controlling LED lighting fixtures. Connected to the PSU (power supply unit), the Adelphi provides a 0-10V PWM signal to dim the lights when needed. Our long range radio protocol secure a stable network for your grow, and allow us to run up to 9000 units.



heliospectra
Redefine Nature's Potential

(!) Values are pending awaiting 3rd party verification.

Subject to change without notice. Tolerance $\pm 10\%$

CONTACT HELIOSPECTRA:

SE: +46 31 40 67 10 NA: +1 888 942 4769
sales@heliospectra.com www.heliospectra.com

©Heliospectra AB
All rights reserved
Ver. 1.0



[FOR HORTICULTURE USE ONLY]