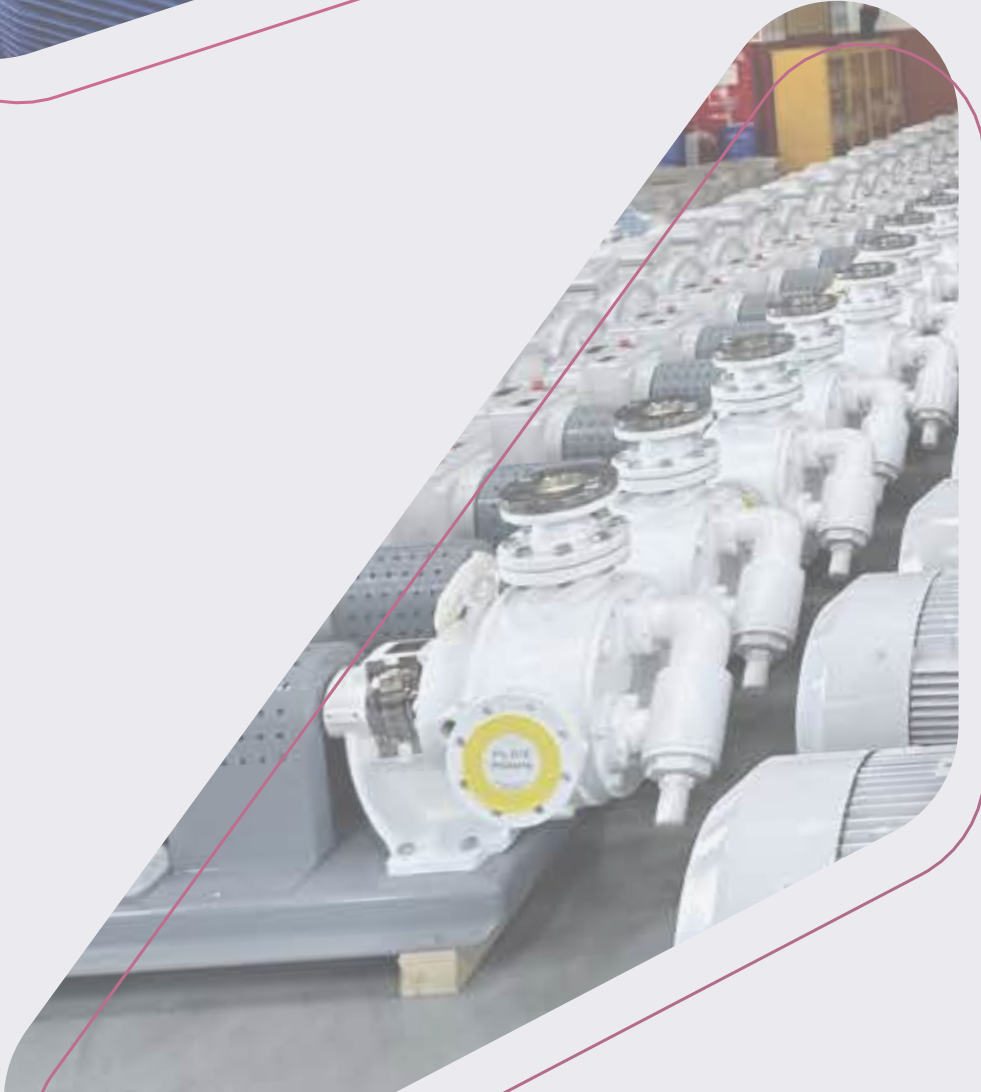
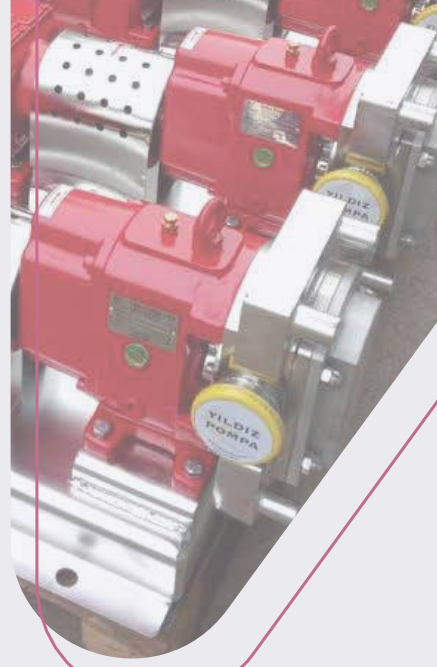


yıldız 
pompa
VE MAKİNA A.Ş.

**YILDIZ POMPA
FOR EVERY DROP
OF INDUSTRY**

yıldız
pompa





ABOUT US

As Yildiz Pompa, we produce internal eccentric gear pumps, modular gear pumps, helical gear pumps, vane pumps, screw pumps, lobe pumps, magnetic coupling internal eccentric gear pump and magnetic coupling modular gear pump, which play a leading role in the transfer of viscous and semi-viscous fluids required by the industry.

The pumps we produce with our expert staff and solution-oriented approach are used safely in the following areas:

| | | |
|--------------|------------------------|-----------------------|
| Abrasives | Ethanol | Medicine |
| Adhesives | Oils | Plastics and Polymers |
| Filings | Fibre | Polyurethane Foam |
| Agricultural | Food | Printing Inks |
| Asphalt | Fuels and Fuel Oils | Paper |
| Bio-diesel | OEM Applications | Cooling |
| Beverages | Petroleum | Rubber |
| Chemicals | Paints and Coatings | Soap and Detergent |
| Chocolate | Personal Care Products | Sugar |

The products we produce in our modern R&D laboratories and with our advances technological infrastructure play a locomotive role in the main sectors. The movement we have achieved in line with our production targets adds strength to the national economy through an increase in global supply.

Contact us for a strong, reliable and innovative solution with Yildiz Pompa!

INDUSTRY SOLUTIONS



CHOCOLATE INDUSTRY

Yildiz Pompa works in close co-operation with chocolate manufacturers to help you overcome the challenges of pumping chocolate and cream fluids. We aim to increase your production efficiency by offering customized solutions for each type of chocolate and cream.

We are here to provide the best fluid transfer for you!



PAINT INDUSTRY

The pumps we have designed in accordance with the needs of the paint industry provide safe transfer of various products such as alkyd, acrylic paint, varnish, paint paste, paste, plastic paint and solvent-based paint. Our pumps, which are specially developed to overcome the difficulties encountered especially in paint transfers containing abrasive pigments, offer maximum performance.

Although cast iron pumps are adequate for most paints, stainless steel pumps are preferred for some water-based and specially paints. Internal eccentric gear pumps provide consistent flow, while gear and lobe pumps are an excellent choice for bulk raw material transfer.

Discover Yildiz Pompa's reliable solutions to optimize your paint production processes!



FOOD INDUSTRY

The pumps we have developed for the food industry offer a combination of transport, cleaning and sealing options while providing maximum efficiency. For businesses where cleaning processes are of critical importance, we have designed lobe pumps suitable for on-site cleaning; so you save time and labor.

Our pumps are used safely in the transfer of many food products such as chocolate, cream, jam, molasses, corn syrup, fruit juice, tahini, ketchup, mayonnaise, tomato paste and peanut butter.

Optimize your food production processes with our efficient solutions!

INDUSTRY SOLUTIONS



SHIP INDUSTRY

The pumps developed by Yildiz Pompa for the marine industry ensure the safe transfer of various products such as bilge, sludge, fish oil, bitumen, diesel oil and diesel.

Our durable and easy-to-maintain pumps increase operational efficiency in all biodiesel production stages, from waste oil draining to the esterification process, glycerin and ethanol transfer. Choose Yildiz Pompa for reliable and effective solutions in the ship industry!



PETROLEUM INDUSTRY

The positive displacement pumps we have developed for the petroleum industry offer a wide range of applications. These pumps are used in the safe transfer of many fuels such as oil refining, oil burners, fuel oil systems, waste oil collection, fuel pumps, fuel oil, petrol, gasoline, LP gas, biodiesel, jet fuel and kerosene.

These pumps, which are also an ideal choice for asphalt applications, provide a smooth and constant flow by minimizing pressure fluctuations compared to other pump types. In addition to its capacity to produce high discharge pressure, it is easy to maintain and offers high accuracy in the product volume.

We offer powerful and efficient solutions to meet your needs in the oil industry!



CHEMICAL INDUSTRY

The pumps we have developed for the needs of the chemical industry are used for the safe transfer of various products. We offer ideal solutions for products such as paints, resins, coatings, shampoo, pharmaceuticals, polyol-isocyanate, polyurethane and polyester.

While internal eccentric and lobe pumps are preferred in soap production, - hygienic and easy to maintain lobe pumps are frequently used in filling, production and transfer stages. In addition, magnetic coupling pumps stand out with their high speed and zero leakage features to ensure contactless transmission in the chemical industry.

Optimize your chemical production processes with Yildiz Pompa!

PUMP TYPES

Internal Eccentric Gear Pumps

The Yildiz Pump's "gear within gear" principle, consisting of only two moving parts, ensures reliable and efficient operation. The secret to the success of positive displacement Yildiz Pompa is the displacement that occurs when the liquid completely fills the space between the rotor and the gear of the idler gear.

As with all gear pumps, the only factor limiting the performance of the Yildiz Pumps is the cleanliness of the pumped liquid. At each revolution of the pump shaft, a certain amount of liquid enters the pump through the suction port and this liquid fills the gap between the rotor and the idler gear.

The crescent on the pump cover regulates the flow of the liquid moving towards the outlet opening. The idler gear rotates on a shaft supported by the pump cover by carrying the liquid between its gear and the inner surface of the crescent. The rotor gear moves between the pump casing and the outer surface of the crescent and is connected to the pump shaft.

Enjoy reliable and efficient fluid transfer with Yildiz Pompa!



AREA OF USE

Transporting viscous products such as sugar syrups, chocolate, honey, and molasses.

Pumping liquid oils and other food liquids under hygienic conditions.

Transfer of chemicals such as acids, bases, and solvents.

Transport of viscous chemicals such as resins, polymers, paints, and adhesives.

Pumping of lubricants such as fuel, engine oil, hydraulic oil, and grease.

Processing and transporting viscous products such as creams, lotions, and shampoos.

Pumping of products such as viscous paints, inks, and coating materials.

Transfer of additives such as coating liquids.

High-precision liquid dosing and filling operations.

MATERIAL OPTIONS

Pump Cover and Casing: Cast Iron, Ductile Iron, Cast Steel, AISI 316 - AISI 316L SS

Gears: Ductile Iron, Cast Steel, AISI 316 - AISI 316L SS

Bushings: Bronze, Carbon Graphite, Tungsten Carbide, Ball Bearing

Sealing: Packing Gland, Mechanical Seal, Special Closed System, Cartridge Mechanical Seal



Internal Eccentric Gear Pumps Value Table

| Pump Code | Capacity m ³ /h | Pressure bar | Viscosity cst | Speed rpm | Max Temperature °C |
|-----------|-------------------------------|-----------------|------------------|--------------|-----------------------|
| K3D | 1,9 | 15 | 10 - 55.000 | 1500 | 250 |
| K1D | 3 | 15 | 10 - 55.000 | 1500 | 250 |
| K3F | 4,7 | 15 | 10 - 55.000 | 1500 | 250 |
| K1F | 6 | 15 | 10 - 55.000 | 1500 | 250 |
| K4F | 7,2 | 15 | 10 - 16.500 | 1500 | 250 |
| K3G | 11,8 | 15 | 10 - 55.000 | 550 | 300 |
| K1G | 16 | 15 | 10 - 55.000 | 550 | 300 |
| K1H | 25,2 | 15 | 10 - 55.000 | 500 | 300 |
| K4H | 32 | 15 | 10 - 55.000 | 420 | 300 |
| K1I | 32 | 15 | 10 - 55.000 | 420 | 300 |
| K2I | 55 | 15 | 10 - 55.000 | 400 | 300 |
| K1J | 55 | 15 | 10 - 55.000 | 400 | 300 |
| K2J | 108 | 15 | 10 - 55.000 | 350 | 300 |
| K1K | 135 | 10 | 10 - 55.000 | 350 | 300 |
| K1L | 135 | 10 | 10 - 55.000 | 350 | 300 |
| K1M | 200 | 10 | 10 - 55.000 | 230 | 250 |
| U1D | 3 | 15 | 10 - 55.000 | 1500 | 250 |
| U2D | 1,9 | 15 | 10 - 55.000 | 1500 | 250 |
| U4G | 14,7 | 15 | 10 - 55.000 | 1500 | 300 |
| U3G | 21 | 15 | 10 - 55.000 | 1500 | 300 |
| U5I | 50 | 15 | 10 - 55.000 | 1000 | 300 |
| U6J | 75 | 15 | 10 - 55.000 | 400 | 300 |
| C1D | 0,36 | 5 | 5.500 - 16.500 | 200 | 70 |
| C1F | 0,4 | 5 | 5.500 - 16.500 | 100 | 70 |
| C3F | 0,5 | 5 | 5.500 - 16.500 | 100 | 70 |
| C1G | 2,2 | 5 | 5.500 - 16.500 | 100 | 70 |
| C1H | 5,2 | 5 | 5.500 - 16.500 | 100 | 70 |
| C3H | 6 | 5 | 5.500 - 16.500 | 100 | 70 |
| C1I | 6 | 5 | 5.500 - 16.500 | 100 | 70 |
| C4D | 3 | 10 | 10 - 550 | 1500 | 90 |
| C4F | 6 | 10 | 10 - 550 | 1500 | 90 |
| C6F | 7,2 | 10 | 10 - 550 | 1500 | 90 |
| C4G | 16 | 5 | 10 - 5.500 | 550 | 70 |
| C4H | 25,2 | 5 | 10 - 5.500 | 500 | 70 |
| C6H | 32 | 5 | 10 - 5.500 | 420 | 70 |
| C4I | 32 | 5 | 10 - 5.500 | 420 | 70 |
| K5A | 0,33 | 15 | 10 - 1.650 | 1500 | 70 |
| K5B | 0,66 | 15 | 10 - 1.650 | 1500 | 70 |
| K5D | 2 | 15 | 10 - 1.650 | 1500 | 100 |
| K5F | 6 | 15 | 10 - 1.650 | 1500 | 100 |
| K7F | 7,2 | 15 | 10 - 1.650 | 1500 | 100 |
| K6G | 14,7 | 15 | 10 - 1.650 | 1500 | 100 |
| K5G | 21 | 15 | 10 - 1.650 | 1500 | 100 |
| K8D | 2,8 | 7 | 10 - 16.500 | 1500 | 100 |
| K8F | 5 | 7 | 10 - 16.500 | 1500 | 100 |

Max. capacity, pressure and temperature values may vary according to the pump construction.
For requirements above 55.000 cst viscosity, please contact our company. Values are according to 50Hz. changes at 60 Hz.

PUMP TYPES

Lobe Pump

Lobe pumps are driven by timing gears. These gears allow lobes to rotate inside the casing made entirely of stainless steel on parallel shafts without contacting each other and the casing. The drive of the pump is realized by transferring the rotary motion received from the reducer in the opposite direction of the timing gear. With its hygienic materials and design, lobe pumps transfer the liquid reliably without disturbing its structure.

Depending on the viscosity, it is capable of achieving pressures up to 12 bar. Choose our lobe pumps for reliable and effective fluid transfer with Yildiz Pompa.



MATERIAL OPTIONS

Pump Casing and Cover: Cast Steel, AISI 316-316L

Lobes: Cast Steel, AISI 316- 316L

Bearing: Ball Bearing

Sealing: Mechanical seal, Special Closed System, Packing Gland

AREA OF USE

Transporting delicate and viscous food products such as yogurt, milk, cream, honey, molasses, and jam.

Damage-free pumping of products containing solid particles (yogurt with fruit pieces, jam, etc.).

Hygienic transfer of viscous products such as ointments, creams, lotions, shampoos, and toothpaste.

Pumping of viscous and sticky chemicals such as resins, polymers, paints, and varnishes.

Transporting sludge, concentrated wastewater, and chemical solutions, as well as pumping abrasive liquids.

Transporting dense liquids such as pulp, starch solutions, and coating materials.

Precise transfer of high-viscosity paints, varnishes, and coating materials.

Transporting protein-based liquids, yeast suspensions, and biomass-containing liquids.

Challenging liquid transfer applications such as oil, fuel, and sludge.

PUMP TYPES

Lobe Pumps Value Table



| Pump Code | Capacity m ³ /h | Pressure bar | Viscosity cst | Speed rpm | Max Temperature °C |
|-----------------------------------|-------------------------------|-----------------|------------------|--------------|-----------------------|
| L11110 - L11210 - L11310 - L11410 | 3,5 | 10 | 13 - 20.000 | 1000 | 150 |
| L11120 - L11220 - L11320 - L11420 | 7 | 10 | 13 - 20.000 | 1000 | 150 |
| L11125 - L11225 - L11325 - L11425 | 8 | 10 | 13 - 20.000 | 750 | 150 |
| L11130 - L11230 - L11330 - L11430 | 10 | 8 | 13 - 20.000 | 750 | 150 |
| L12135 - L12235 - L12335 - L12435 | 10,5 | 8 | 13 - 20.000 | 500 | 150 |
| L12140 - L12240 - L12340 - L12440 | 15 | 8 | 13 - 20.000 | 500 | 150 |
| L13145 - L13245 - L13345 - L13445 | 18,5 | 8 | 13 - 20.000 | 500 | 150 |
| L13150 - L13250 - L13350 - L13450 | 27 | 7 | 13 - 20.000 | 500 | 150 |
| L14155 - L14255 - L14355 - L14455 | 39 | 8 | 13 - 55.000 | 500 | 150 |
| L14160 - L14260 - L14360 - L14460 | 54 | 7 | 13 - 55.000 | 500 | 150 |
| L15165 - L15265 - L15365 - L15465 | 81 | 7 | 13 - 55.000 | 500 | 150 |
| L15170 - L15270 - L15370 - L15470 | 100 | 7 | 13 - 55.000 | 500 | 150 |
| L17175 - L17275 - L17375 - L17475 | 132 | 7 | 13 - 55.000 | 320 | 150 |
| L17180 - L17280 - L17380 - L17480 | 185 | 7 | 13 - 55.000 | 320 | 150 |

Reasons for Choosing Lobe Pumps

- Hygienic designs,
- Low shearing effect, advantageous for sensitive products,
- Ability to operate in reverse,
- Ability to withstand short dry runs,
- Ability to handle fluids containing solids without damage.

PUMP TYPES

Modular Gear Pump

Modular gear pumps work effectively with the gear pump principle. The pump shaft transmits the circular motion it receives from the motor to the gear that is rotated in the opposite direction with the rotating gear on the shaft. As the gears separate, liquid fills between them. This liquid is transported to the discharge zone by the rotational movement of the gears and is discharged into the discharge channel by re-engaging the gears.

These pumps provide fast transfer of corrosive and low volume fluids. They offer reliability thanks to their compact design and are ideal for a variety of applications. Experience the advantage of reliable and effective liquid transfer with Yildiz Pompa!



MATERIAL OPTIONS

Pump Casing, Covers:

Cast Iron, Ductile Iron, Cast Steel, AISI 316 - AISI 316L SS

Gears:

Cast Steel, AISI 316 - AISI 316L SS

Bushing:

Bronze, Ball Bearing, Carbon Graphite, Tungsten Carbide

Sealing:

Packing Gland, Mechanical Seal, Special Closed System

AREAS OF USE

For constant flow oil pumping in lubrication systems, cooling fluid circulation.

Controlled transfer of chemical liquids (acids, bases, solvents).

Pumping of liquid fuels such as diesel, gasoline, and biodiesel.

Transfer of resins, solvents, and pigments.

Transport of mineral oils or high-viscosity liquids.

Dosing of cosmetic products such as creams and lotions.

PUMP TYPES

Modular Gear Pump Value Table



| Pump Code | Capacity m ³ /h | Pressure bar | Viscosity cst | Speed rpm | Max Temperature °C |
|-----------|-------------------------------|-----------------|------------------|--------------|-----------------------|
| H2C | 1,4 | 30 | 10 - 550 | 1500 | 100 |
| H2D | 2,5 | 30 | 10 - 550 | 1500 | 100 |
| H3D | 4,2 | 15 | 10 - 550 | 1500 | 100 |
| H2F | 7,8 | 30 | 10 - 550 | 1500 | 100 |
| H3F | 10,5 | 15 | 10 - 550 | 1500 | 100 |
| H4A | 0,6 | 15 | 10 - 165 | 1500 | 100 |
| H4B | 0,6 | 15 | 10 - 165 | 1500 | 100 |
| H4D | 3,0 | 12 | 10 - 550 | 1500 | 70 |
| H4G | 7,0 | 12 | 10 - 550 | 1500 | 70 |



PUMP TYPES

Helical Gear Pump

Helical gear pumps operate with high efficiency with gear pump principle. The pump shaft transfers the circular motion received from the motor to the other gear rotating in the opposite direction with the rotating gear on the shaft. As the gear are separated from each other, liquid fills between them. This liquid is transported to the discharge zone by the rotational movement of the gears and is transmitted to the discharge channel by the reunion of the gears. Depending on the viscosity of the fluid, pressures up to 20 bar can be achieved.

Owing to its helical gear structure, it is ideal for applications where silent operation is important and uninterrupted flow rate is required.

Experience the advantage of silent and effective liquid transfer with Yildiz Pompa!



MATERIAL OPTIONS

Pump Casing, Covers, Gears:

Cast Iron, Ductile Iron, Cast Steel, AISI 316 - AISI 316L SS

Bushing:

Bronze, Ball Bearing, Carbon Graphite.

Sealing:

Packing Gland, Mechanical Seal, Special Closed System, Cartridge Mechanical Seal

AREAS OF USE

Transport of motor oil, diesel fuel, gasoline, LPG, and diesel fuels

In fuel filling and transfer systems

In the safe transfer of chemical liquids such as acids, bases, and solvents

In high-viscosity liquids such as polymers, resins, paints, and varnishes

In dosing and mixing systems

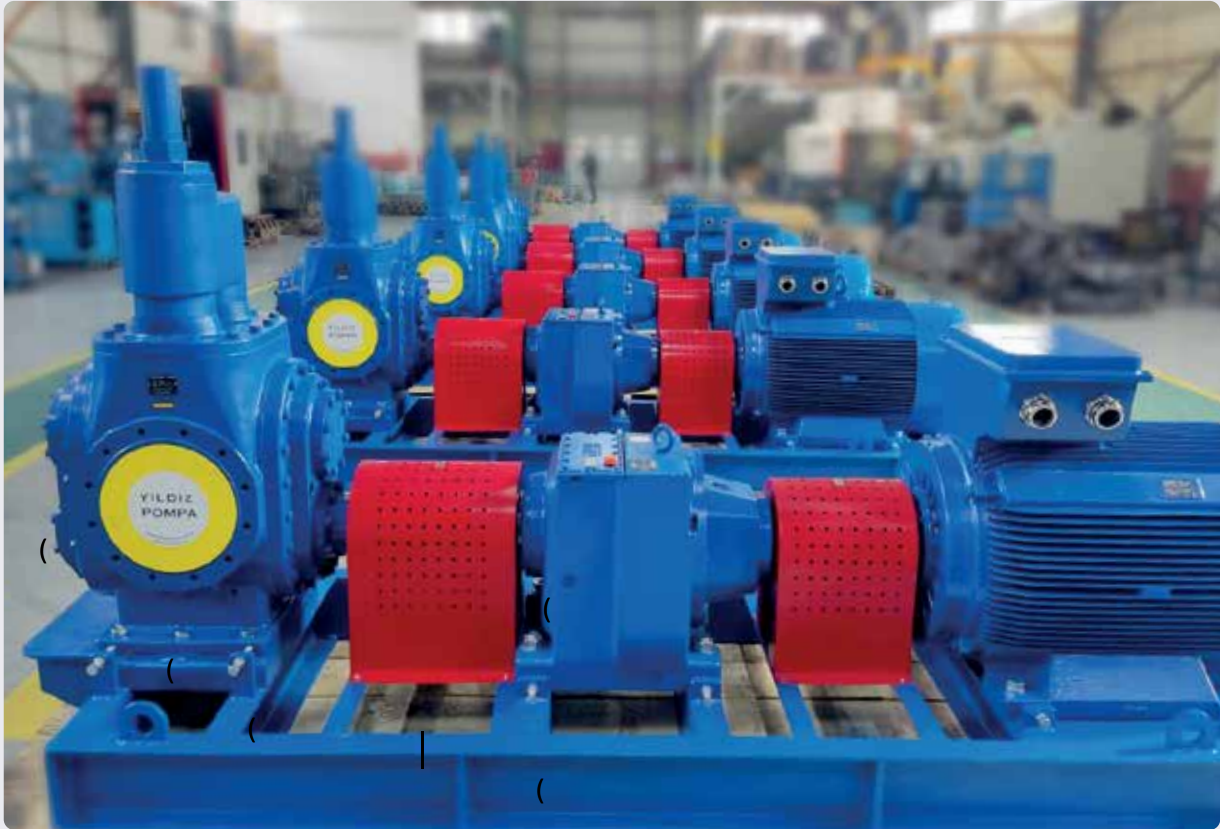
In the transfer of fluids such as molasses, sugar syrup, soap, and cream

PUMP TYPES

Helical Gear Pump Value Table



| Pump Code | Capacity m ³ /h | Pressure bar | Viscosity cst | Speed rpm | Max Temperature °C |
|-----------|-------------------------------|-----------------|------------------|--------------|-----------------------|
| H1G | 20 | 15 | 10 – 5.500 | 1500 | 200 |
| H5H | 27 | 15 | 10 – 55.000 | 450 | 350 |
| H1H | 38 | 15 | 10 – 55.000 | 450 | 350 |
| H1I | 38 | 15 | 10 – 55.000 | 450 | 350 |
| H1J | 76 | 15 | 10 – 55.000 | 450 | 350 |
| H1L | 175 | 15 | 10 – 55.000 | 500 | 350 |
| H1M | 350 | 15 | 10 – 55.000 | 500 | 350 |
| H1N | 350 | 15 | 10 – 55.000 | 500 | 350 |



PUMP TYPES

Magnetic Driven Internal Eccentric Gear Pump



Internal eccentric gear pumps with magnetic coupling play a critical role in various industrial applications. These pumps realize fluid flow in a continuous and controlled manner with the positive displacement principle, ensuring safe transport of viscous and abrasive fluids. The magnetic coupling provides the sealing between the motor and the gear system. This prevents fluid from leaking out, minimizing environmental pollution and safety risks. By preventing leaks, the design prevents contamination of the fluid, which is particularly important in the food, chemical and pharmaceutical industries. Pumps can operate at different speeds and pressures depending on the viscosity of the fluids. This offers advantages in applications requiring precise flow control. Owing to the magnetic coupling, the absence of mechanical connection facilities

maintenance and repairs. This extends the pump's uptime and reduces operating costs. By offering energy efficiency, it provides high performance with low energy consumption. This helps businesses to reduce energy costs. They have a long service life owing to their structure resistant to harsh conditions. These features magnetic coupling internal eccentric gear pumps and ideal solution for applications requiring precise fluid transfer. Experience the advantage of reliable and efficient fluid transfer with Yildiz Pompa!



AREAS OF USE

Safe transportation of corrosive or hazardous chemicals

Reactive substances such as acids, bases, solvents, isocyanates

Suitable for explosive atmospheres (ATEX certified types)

Used in processes requiring hygienic conditions

Safe transportation of liquid fuels such as diesel, gasoline, and biodiesel

Leak-proof solution for liquids with risk of evaporation

MATERIAL OPTIONS

Pump Casing, Covers: Cast Iron, Ductile Iron, Cast Steel, AISI 316 - AISI 316L SS

Gears: Cast Iron, Ductile Iron, Cast Steel, AISI 316 - AISI 316L SS

Bushing: Bronze, Carbon Graphite, Tungsten Carbide

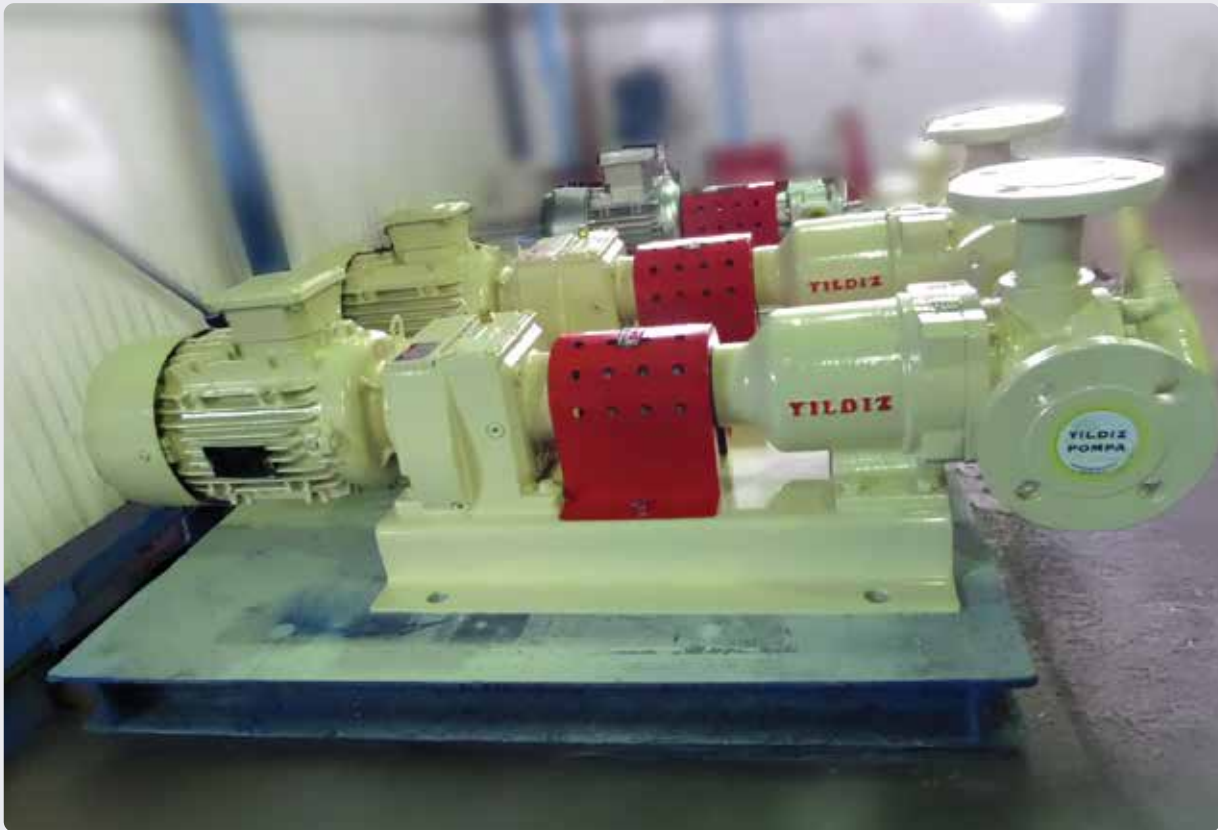
Sealing: Magnetic Coupling

PUMP TYPES

Magnetic Driven Internal Eccentric Gear Pump Value Table



| Pump Code | Capacity m ³ /h | Pressure bar | Viscosity cst | Speed rpm | Max Temperature °C |
|-----------|-------------------------------|-----------------|------------------|--------------|-----------------------|
| M2D | 1,9 | 12 | 10 – 55.000 | 1400 | 250 |
| M1D | 3 | 12 | 10 – 55.000 | 1400 | 250 |
| M2F | 4,7 | 12 | 10 – 55.000 | 1400 | 250 |
| M1F | 6 | 12 | 10 – 55.000 | 1400 | 250 |
| M3F | 7,2 | 12 | 10 – 16.500 | 1400 | 250 |
| M2G | 11,8 | 12 | 10 – 55.000 | 550 | 250 |
| M1G | 16 | 12 | 10 – 55.000 | 550 | 250 |
| M1H | 25,2 | 12 | 10 – 55.000 | 500 | 250 |
| M3H | 32 | 12 | 10 – 55.000 | 420 | 250 |
| M1I | 32 | 12 | 10 – 55.000 | 420 | 250 |
| M4I | 55 | 12 | 10 – 55.000 | 420 | 250 |
| M1J | 55 | 12 | 10 – 55.000 | 400 | 250 |



PUMP TYPES

Magnetic Driven Modular Gear Pump

Modular gear pumps with magnetic coupling operate with high efficiency on the principle of the modular gear pump. They ensure the safe transport of viscous or abrasive liquids and owing to the positive displacement principle, the flow is uninterrupted and controlled.

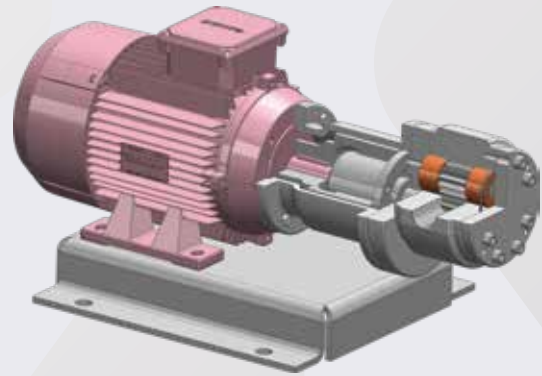
The magnetic coupling provides sealing between the pump motor and the gear system. This feature minimizes environmental pollution and safety risks by preventing fluid leakage.

Furthermore, its design prevents leaks and prevents contamination of the liquid, which is especially critical for the food, chemical and pharmaceutical industries. Modular gear pumps with magnetic coupling can operate at different speeds and pressures depending on the viscosity of the fluids. This is ideal for applications requiring precise flow control. The absence of a mechanical connection simplifies maintenance and repairs.

This extends the pump's uptime and reduces operating costs.

It offers energy efficiency, providing high performance with low energy consumptions. This helps business reduce their energy costs.

Discover the advance of reliable, efficient and sustainable fluid transfer with Yildiz Pompa!



AREAS OF USE

Safe transportation of corrosive or hazardous chemicals

Reactive substances such as acids, bases, solvents, isocyanates

Suitable for explosive atmospheres (ATEX certified types)

Used in processes requiring hygienic conditions

Safe transportation of liquid fuels such as diesel, gasoline, and biodiesel

Leak-proof solution for liquids with risk of evaporation

MATERIAL OPTIONS

Pump Casing, Covers: Cast Iron, Ductile Iron, Cast Steel, AISI 316 - AISI 316L SS

Gears: Steel, AISI 316 - AISI 316L SS

Bushing: Bronze, Carbon Graphite, Tungsten Carbide

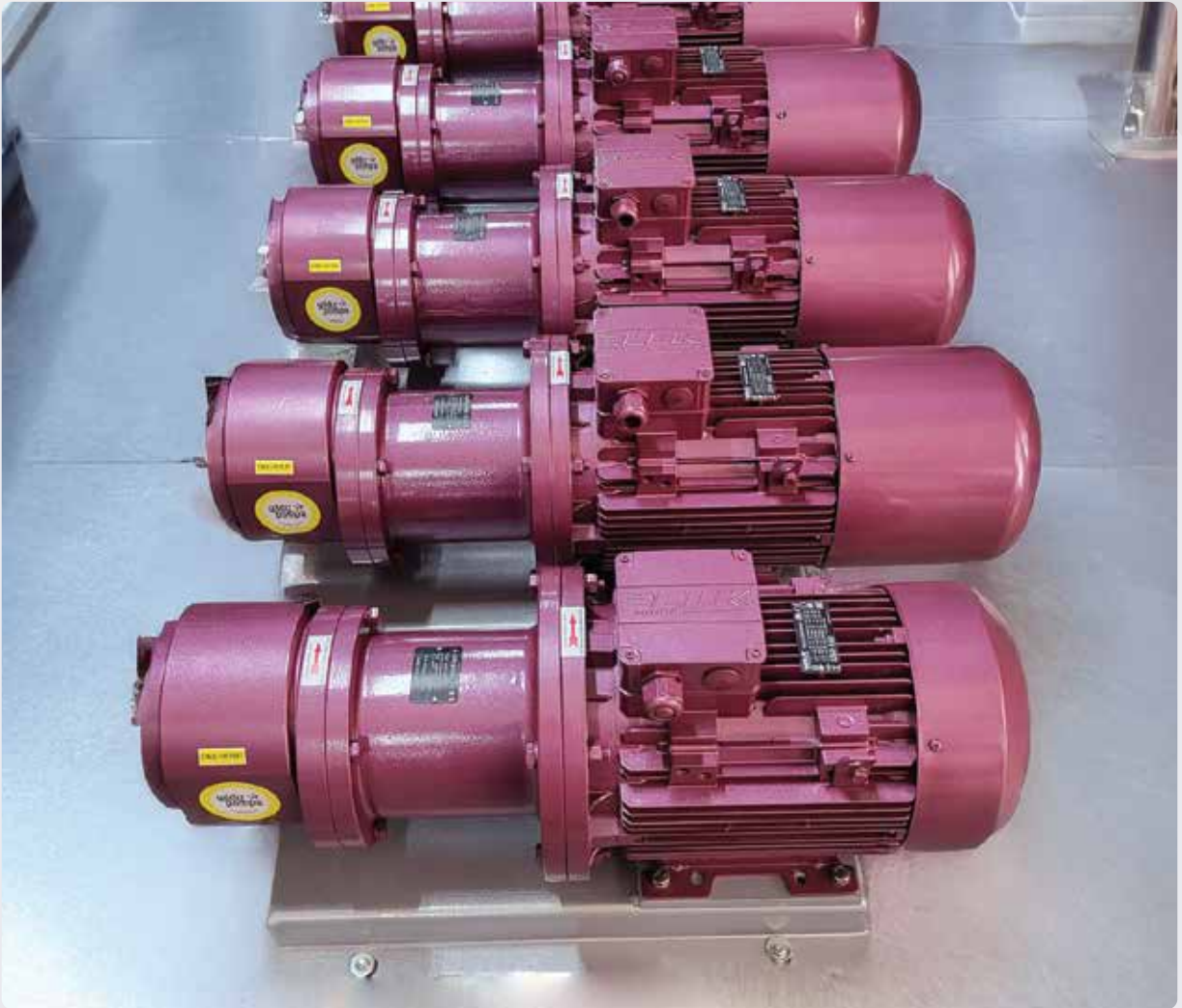
Sealing: Magnetic Coupling

PUMP TYPES

Magnetic Driven Modular Gear Pump Value Table



| Pump Code | Capacity m3/h | Pressure bar | Viscosity cst | Speed rpm | Max Temperature °C |
|-----------|------------------|-----------------|------------------|--------------|-----------------------|
| M6D | 2,5 | 30 | 10 – 550 | 1500 | 100 |
| M7D | 3 | 15 | 10 – 550 | 1500 | 100 |
| M8F | 3,8 | 30 | 10 – 550 | 1500 | 100 |
| M6F | 7,7 | 30 | 10 – 550 | 1500 | 100 |
| M7F | 10,5 | 15 | 10 – 550 | 1500 | 100 |

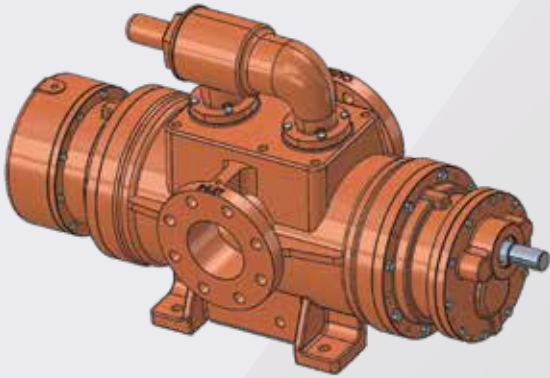


PUMP TYPES

Screw Pumps

Screw pumps are positive displacement systems that utilize a screw mechanism to transport liquids. The basic elements of the pump are two screws. These screws rotate by intertwining and effectively transporting the liquids.

The pump shaft, rotated by the motor, moves the screws. During the rotation of the screws, a vacuum is created in the suction area of the pump. This vacuum allows the liquid to enter the pump through the suction nozzle. While the liquid is trapped between the threads of the screws, it is carried towards the outlet of the pump under pressure with the rotational movement. As the rotation of the screws continues, the liquid is squeezed out between the threads and discharged from the outlet of the pump with high pressure.



Screw pumps are capable of handling liquids of different viscosities. The rotational speed and the design of the screws affect the flow and transport capacity of the liquid. Owing to the sealing features in their design, they prevent liquid from leaking out; this makes them reliable and clean solutions.

Screw pumps are generally preferred in low flow and high pressure applications, food processing, chemical industry and many other industries. It is an ideal solution for precise fluid transfer and handling of various types of fluids.

Transport your viscous fluids safely with Yildiz Pompa!

AREAS OF USE

Crude Oil

Transport of viscous liquids

Transfer of chemicals

High volume and viscous foods products

Liquids such as pulp Cooling Systems

MATERIAL OPTIONS

Pump Casing, Covers: Cast Steel

Gears: Steel

Bushing: Bronze, Ball Bearing

Sealing: Mechanical Seal, Special Closed System

PUMP TYPES

Screw Pumps Value Table

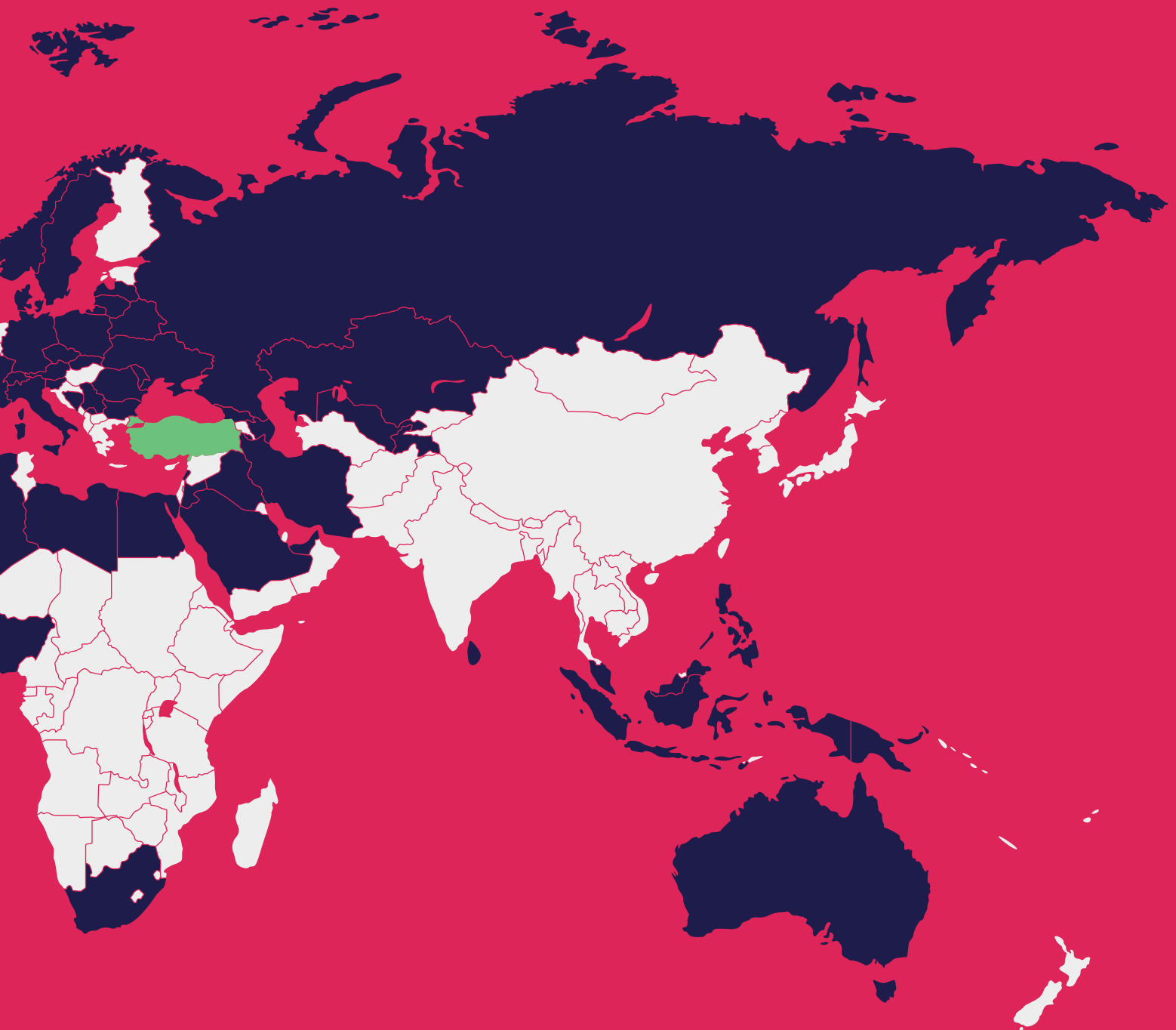


| Pump Code | Capacity m ³ /h | Pressure bar | Viscosity cst | Speed rpm | Max Temperature °C |
|-----------|-------------------------------|-----------------|------------------|--------------|-----------------------|
| Y2I | 15 | 20 | 25 - 550 | 1400 | 150 |
| Y2J | 35 | 20 | 25 - 550 | 1400 | 150 |

COUNTRIES WE WORK IN



COUNTRIES WE WORK IN



COUNTRIES WE WORK IN

Algeria

Australia

Austria

Azerbaijan

Belarus

Bosnia and

Herzegovina

Brazil

Bulgaria

Burkina Faso

Canada

Chile

Czech Republic

Denmark

Ecuador

Egypt

France

Georgia

Germany

Guinea

Indonesia

Iran

Iraq

Italy

Jordan

Kaliningrad

Kazakhstan

Kosovo

Latvia

Lebanon

Libya

Lithuania

Mexico

Moldova

Morocco

Nigeria

Norway

Peru

Philippines

Poland

Romania

Russia

Saudi Arabia

Senegal

Serbia

Singapore

Slovakia

Slovenia

South Africa

Spain

Sri Lanka

Sweden

Switzerland

Tajikistan

Ukraine

United Arab

Emirates

United Kingdom

Uzbekistan

REFERENCES



CONTACT



➔ www.yildizpompa.com

📍 Aydınli Dstr., Birlik Organized Industrial Zone, 5th St.,
No:7, Tuzla, Istanbul, Türkiye

☎ +90 216 378 64 21

☎ +90 216 378 64 22