



Multi-Point Thermometer



Our Expertise, Your Values

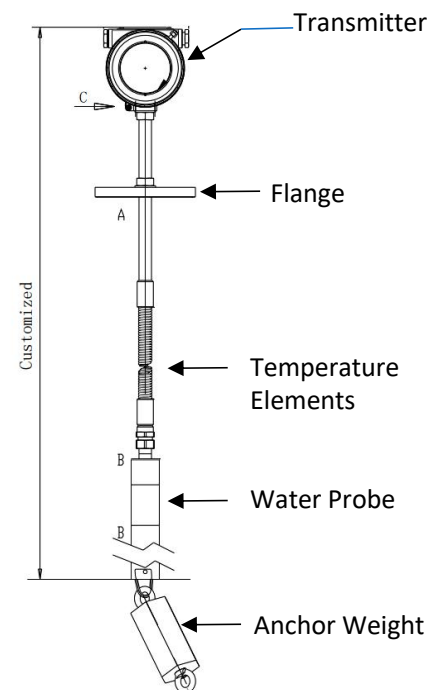
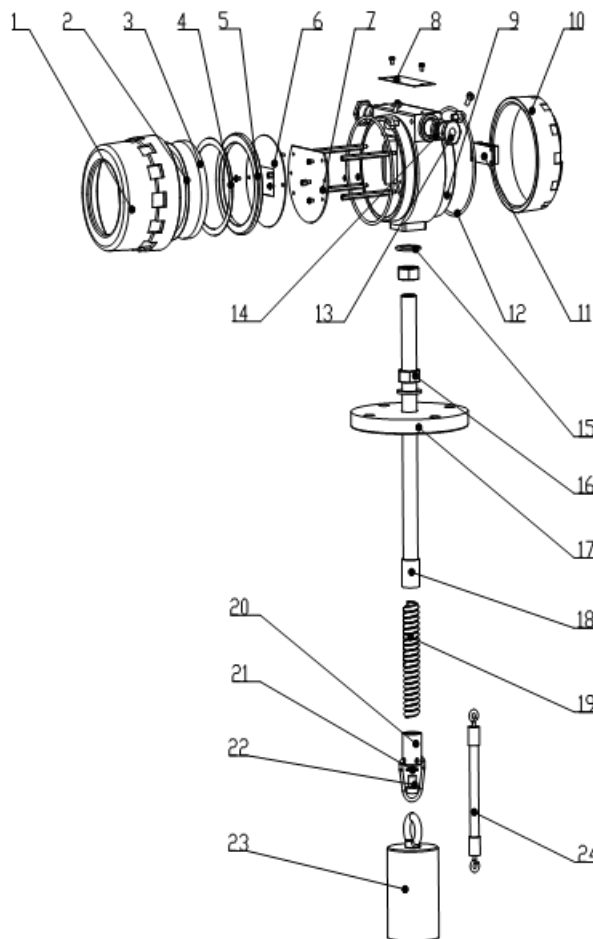


■ BJZT MultiSpot Thermometer

The BJZT-IV multi-spot thermometer is applicable to the product where there is a temperature profile existed and so to measure the temperature of multiple spots at the same time. BJZT-IV is widely used in chemical synthesis tower, oil storage tank and other devices. The temperature point element of BJZT-IV are placed in a flexible sealed protective tube. BJZT-IV supports up to 16 point temperature measurement, and can be customized manufactured according to the user's requirements.

Composition

Bjzt - IV multi-spot thermometer is composed of main control circuit, PT 100 temperature sensor or PT temperature sensor + T-type thermocouple temperature sensor, instrument housing, sensor flexible seal protection tube, installation flange, fixed Anchor weight, etc.



1.Display cover 2.Rubber pad 3.Glass window 4.Gasket 5.Hold-down ring 6.Sticker 7.CPU Board 8.Name plate Central axis 10.Rear Cover 11.O Ring 12. Wire terminals 13.Gland nut 14.Rubber pad 15.Combination pad 16.Gland nut 17.Flange 18. Flexible tube joint 19.Flexible tube 20. Joint pipe 21.Gasket 22.Hook 23.Anchor weight 24. Attached Wire to Anchor weight

Principle

BJZT-IV take PT100 or PT100 + T thermocouple temperature sensor as the acquisition terminal, the data acquired will be calculated and processed by the main circuit. The temperature value of the acquired is output through Hart or RS485 interface. The temperature value of each point is read through command by accessing the instruments.

Ordering information

The ordering information of BJZT-IV is explained in the following table.

Model Selection Table						for BJZT Multi-Spot Thermometer		
BJZT-IV		Communication						
	Hart		Hart communication protocol					
	RS485		ModBus 485 communication protocol					
			Measurement Mode					
			Pt T		PT100+T type thermocouple			
			Pt		PT100			
					Temperature spots			
					1~16			
							Thermometer length	
							0.1~32 meter	
BJZT-IV			XX	YY	N	L		

Technical Specification

Temp. Element	Max. 16 pcs	Water Measure Range	Max 400mm
Accuracy of Temp.	± 0.1°C	Accuracy of WL	± 3 mm
Output	RS485 MODBUS, HART	Length	Max 30m
Sensor Type	PT100 RTD	Ambient Temp.	-40°C~+70°C
Voltage	DC 24V for HART, DC 6 ~ 28V for RS485	Flange	Customized, min 2" in dia.
Length	Max 30m	Cable Inlet	2 pcs of NPT 1/2"
Ex Rating	Ex ia II C T6 Ga	IP Protection	IP68