

silea
LIQUID TRANSFER s.r.l.
Via Primo Maggio 19
40064 Ozzano Emilia (BO) ITALY
www.silea.it

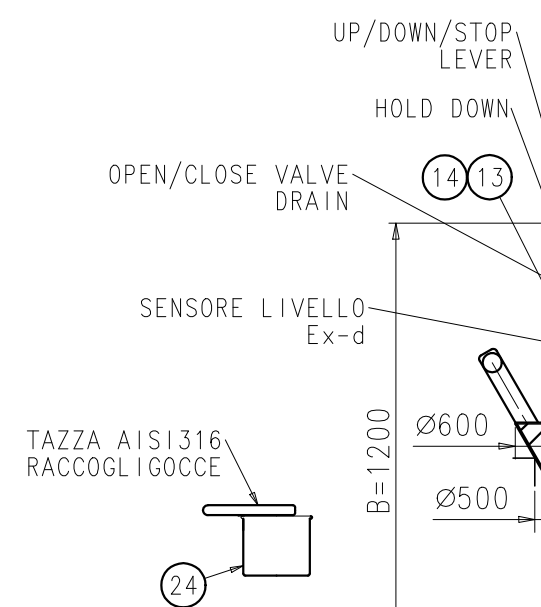
CE
Categoria I
Modulo A

Year 201_ Code _____ DN _____
Serial n° _____

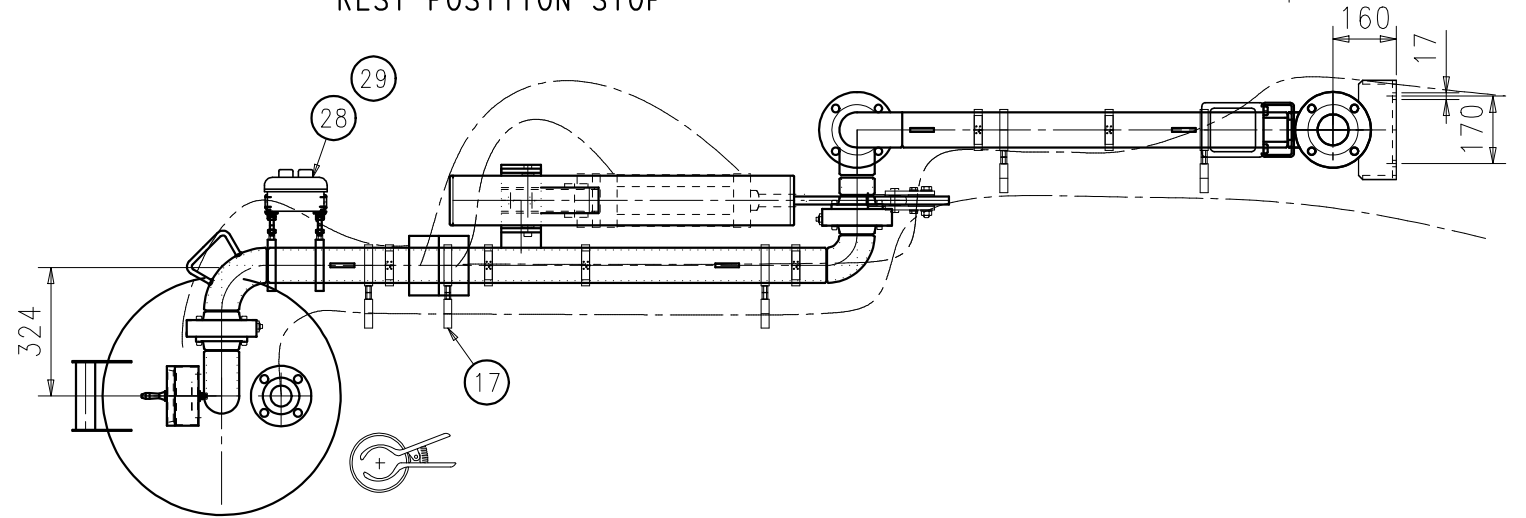
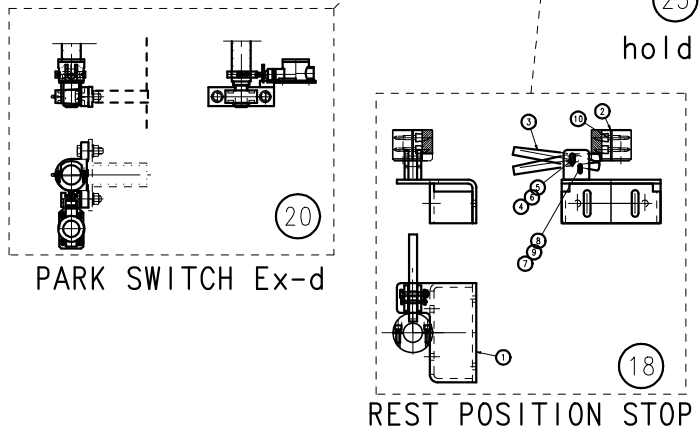
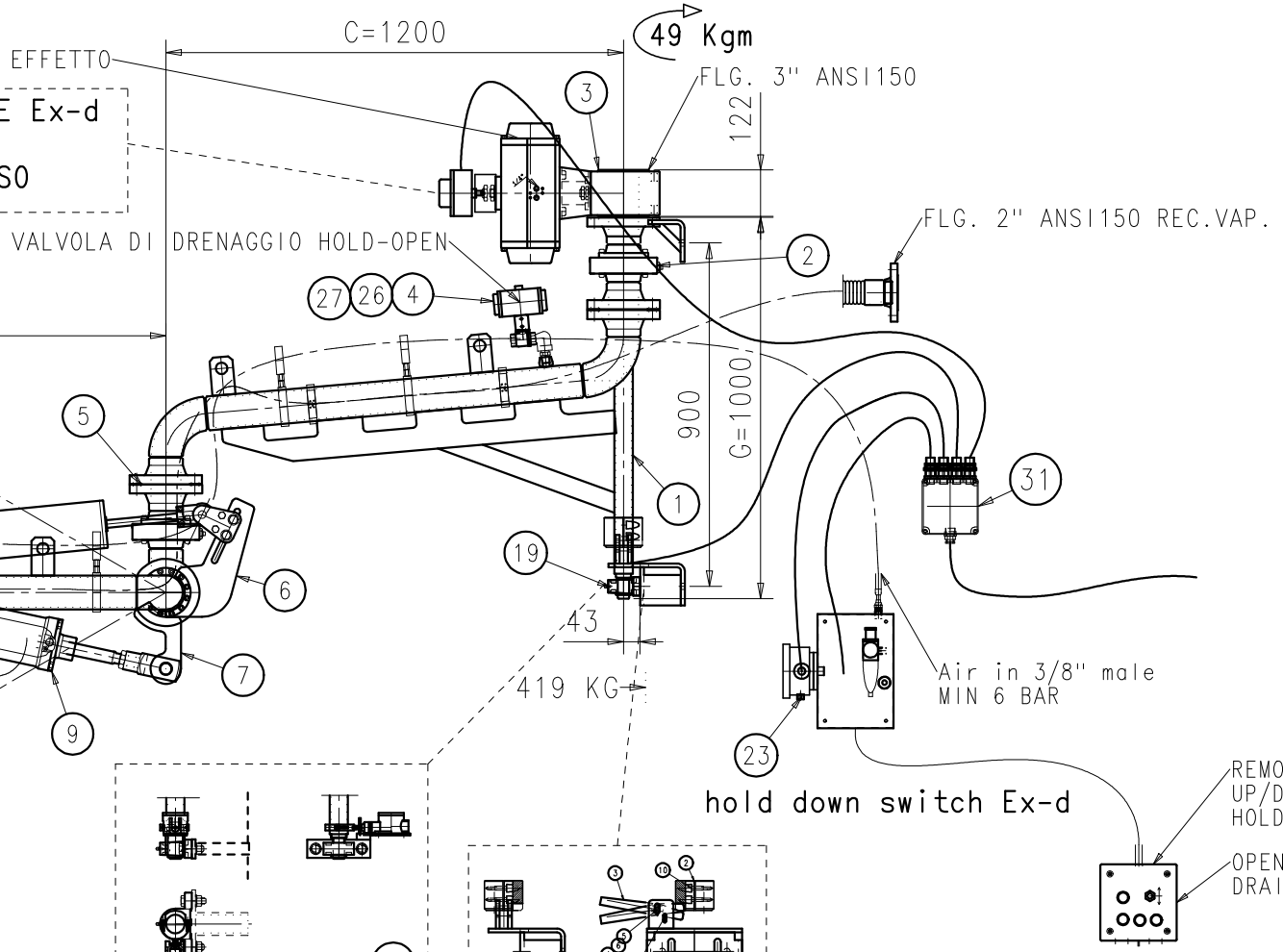
Ps 10 bar Ts -15/+80 °C V _____ lt
(max) (min/max)

Fluid GRUPPO 1 Weight _____ Kg

ATTUATORE PNEUMATICO DOPPIO EFFETTO
BOX MICRO ANTIDEFLAGRANTE Ex-d
CON UN FINECORSO
E INDICATORE APERTO CHIUSO



A=1600



31	JUNCTION BOX	0200-1000027	1	0.8	PAINTED ALU
29	3" C.S PIPE SUPPORT	0215301-902	1	0.3	AISI304
28	DOUBLE PUSH BUTTON	0215-3000003	1	1.14	ALUMINIUM ALLOY
27	ELBOW M/F 1/2" AISI 316 -NPT THREADED	0159-3000303	1	0.37	ASTM A182 F316L
26	HEXAGONAL NIPPLE 1/2" AISI 316	0159-3000203	1	0.08	ASTM A182 F316L
25	NAMEPLATE	2299-0000064B	1	0.01	AISI316
24	DRIP CAN MADE OF SS AISI316L	31252102	1	1.5	AISI316
23	EExd PRESSURE SWITCH 1.6-10 BAR	0200-PMS10-1	1	2.8	AISI316
22	HEXAGON NUT	0054-1100008	2	0.0155	AISI304
21	HEXAGON SOCKET HEAD CAP SCREW	0015-2100119	2	0.048	A2
20	PARK SWITCH Ex-d	31610302	1	0.9	AISI304
19	PILLOW BLOCK	0423-1000030B	1	1.27	STAINLESS STEEL
18	PARK POSITION LOCK	31950103-902	1	11	CARBON STEEL
17	C.S.+R.V. PIPE CLAMPS	3014-1003	4	0	C.S.
16	FLANGE ASSEMBLY KIT 2" ANSI150	23050703-S	1	0.74	AISI304
15	2" FLEXIBLE HOSE	3120R30556000	1	10	AISI316
14	KIT FOR FLANGE 1" ANSI150	23050701-S	1	0.42	AISI304+PTFE-EPDM
13	HIGH LEVEL SWITCH Ex-d PTFE LINED	30210302F	1	4	AISI316
11	PNEUMATIC ACTUATION ASSY	30195031-901	1	19	VARI
10	PNEUMATIC PISTON SUPPORT RH/LH	1400-1101002	1	1.4	AISI304
9	PNEUMATIC CYLINDER	30160103	1	14.5	ALUMINIUM+STAINLESS STEEL
8	COMPRESSION SPRING BALANCE PISTON	2000-BSM-CB	1	37	CARBON STEEL
7	3" SUPPORT	F879-0000009	1	0.98	AISI304
6	3" PISTON SUPPORT	F879-0000005	1	4.82	AISI304
5	FLANGE ASSEMBLY KIT 3" ANSI150	23050704-S	3	0.74	AISI304
4	HOLD OPEN 1/2" BALL VALVE	31963102-ASP	1	0.32	AISI316
3	3" BALL VALVE + PNEUM.ACTUATOR+1 SWITCH	31965110-904	1	25	AISI316+PTFE
2	ASSEMBLY KIT - 3" SWIVEL, PTFE SEALS	2310-14T	4	5.2	C.S.+PTFE
1	3" S.S. WELDED ARM	12015201-901B	1	112	AISI316
Pos	Descrizione	Codice	Q.tà	Peso	Materiale

Remarks :
ITEMS NOT LISTED ARE FOR INTERNAL USE ONLY

silea
Liquid Transfer s.r.l.
www.silea.it

DESCRIPTION :
3" S.S. LONG RANGE TOP LOADING ARM
FOR SULFURIC ACID 98.5%

Material
AISI316+PTFE

Rev.	Weight kg	Drawn by	Vis.	Scale	Date	Code
1	274	utec3		1:20	21/03/2014	12015201-901