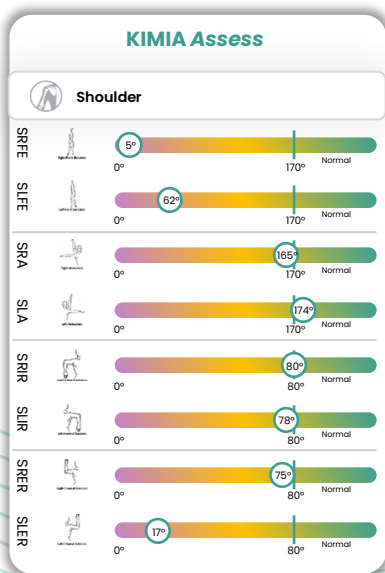
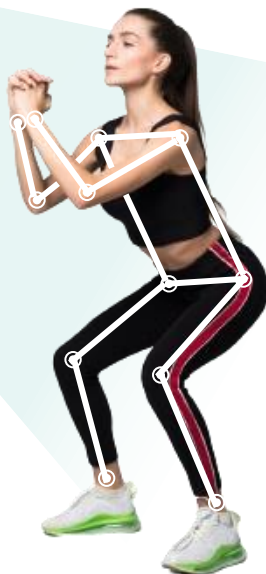


KIMIA Assess

KIMIA® Assess is a full-body joint health assessment system utilizing computer vision technology & state-of-the-art artificial intelligence.



Speed: Complete full assessments within minutes.



Accuracy: Get accurate measurements for clear insights into joint health.



Target-oriented treatment: Base your treatment decisions on objective assessment results and track your progress continuously.

Powered by

KINEXCS

www.kinexcs.com hello@kinexcs.com